

TREE LEGEND

TREES	BOTANICAL NAME / COMMON NAME	CONT.	MULCOL.	QTY.
	<i>Cassia leptophylla</i> / Gold Medallion Tree	24"box	Med	17
	<i>Cercidium x 'Desert Museum'</i> / Desert Museum (Thornless) Palo Verde	24"box	Low	23
	<i>Koeleruteria bipinnata</i> / Chinese Flame Tree Multi-Trunk	36"box	Med	11
	<i>Pinus eldarica</i> / Afghan Pine	15 gal	Low	95
	<i>Platania chinensis</i> / Chinese Platane	24"box	Med	14
	<i>Platanus racemosa</i> / California Sycamore	15 gal	Med	20
	<i>Platanus x acerifolia</i> / London Plane Tree	24"box	Med	21
	<i>Rhus lancea</i> / African Sumac	24"box	Low	21
	<i>Tristania conferta</i> / Brisbane Box	24"box	Med	13

CONCEPT PLANT SCHEDULE

○	FOUNDATION PLANTING / HEDGE SCREEN - 5 GAL - MED WATER <i>Buxus microphylla japonica</i> 'Green Beauty' / Green Beauty Boxwood - Space 30" o.c. <i>Ligustrum texanum</i> / Texas Privet - Space 3'-6" o.c. <i>Podocarpus gracilior</i> 'Column' / Fern Pine - Space 4" o.c.	☀	WOMP GRASSES - LOW WATER - 1 & 5 GAL <i>Festuca californica</i> / California Fescue <i>Leymus condensatus</i> 'Canyon Prince' / Native Blue Rye <i>Muhlenbergia lindheimeri</i> 'Autumn Glow' TM / Lindheimer's Muhly Space 4" o.c. <i>Pennisetum x 'Fairy Tails'</i> / Evergreen Fountain Grass
☀	LARGE ACCENT SHRUBS - 5 GAL - LOW WATER <i>Agave americana</i> / Century Plant - Space 6" o.c. <i>Agave americana</i> 'Margratta' / Variegated Century Plant - Space 6" o.c. <i>Bougainvillea x 'Rosenka'</i> / Bougainvillea <i>Dasyliyon wheeleri</i> / Grey Desert Spoon - Space 5" o.c.	▨	SHRUB PALETTE - LOW WATER USE <i>Shrubs</i> <i>Arbutus unedo</i> / Strawberry Tree Shrub - Space 5" o.c. <i>Callistemon citrinus</i> 'Little John' / Dwarf Bottle Brush - Space 3" o.c. <i>Castus x purpureus</i> / Orchid Rockrose <i>Elaeagnus pungens</i> 'Fruittlandi' / Silverberry <i>Muhlenbergia lindheimeri</i> 'Autumn Glow' TM / Lindheimer's Muhly <i>Nandina domestica</i> / Heavenly Bamboo <i>Pennisetum setaceum</i> 'Rubrum' / Purple Fountain Grass <i>Rosmarinus officinalis</i> 'Tuscan Blue' / Tuscan Blue Rosemary <i>Westringia fruticosa</i> / Coast Rosemary - Space 4" o.c.
○	LARGE SCALE FOUNDATION SHRUB - 5 GAL - LOW WATER <i>Arbutus unedo</i> / Strawberry Tree Shrub - Space 5" o.c. <i>Callistemon citrinus</i> / Lemon Bottlebrush Shrub - Space 5" o.c. <i>Dodonaea viscosa</i> 'Purpurea' / Purple Leafed Hoopseed Bush <i>Elaeagnus pungens</i> 'Fruittlandi' / Silverberry <i>Heteromeles arbutifolia</i> / Toyon - Space 6" o.c. <i>Leucophyllum frutescens</i> 'Green Cloud' TM / Green Cloud Texas Ranger <i>Umbellularia californica</i> / California Laurel - Space 5" o.c.	▨	SHRUB PALETTE - MEDIUM WATER USE <i>Miscanthus transmontanus</i> / Evergreen Eulalia <i>Muhlenbergia capillaris</i> / Pink Muhly <i>Plumium serax</i> 'Amazing Red' / Dwarf Red Flax <i>Rosa floribunda</i> 'Iceberg' / Iceberg Rose
○	SMALL SCALE FOUNDATION PLANTING - 5 GAL - LOW WATER <i>Callistemon citrinus</i> 'Little John' / Dwarf Bottle Brush - Space 3" o.c. <i>Leucophyllum frutescens</i> 'Compacta' / Compact Texas Ranger <i>Nandina domestica</i> / Heavenly Bamboo <i>Nerium oleander</i> 'Petite Pink' / Petite Pink Oleander - Space 4" o.c. <i>Olea europaea</i> 'Little Olive' TM / Little Olive Olive Space 3" o.c. <i>Rhaphiolepis indica</i> 'Jack Evans' / Indian Hawthorn <i>Rosmarinus officinalis</i> 'Tuscan Blue' / Tuscan Blue Rosemary - Space 3" o.c. <i>Westringia fruticosa</i> / Coast Rosemary - Space 4" o.c. <i>Xylocma congestum</i> 'Compacta' / Compact Xylocma	▨	WOMP - BASIN / BIOSWALE - LOW WATER HYDROSEED MIX Seed mix by 545 Seeds (805) G84-Q43G or approved equal Hydroseed Slurry Component for slopes from 3:1 to 2:1 Product - Application Rate Combed 1,000 Wood Fiber Mulch - 2,000 lbs / acre Ecology Controls M-Binder / Tack - 200 lbs / acre Biosol Mix 7-2-3 Organic fertilizer - 800 lbs / acre AM 120 Mycorrhizal inoculum - 60 lbs / acre <i>Bouteloua gracilis</i> - Blue Grama / 8.0 Lbs / AC <i>Echinochloa californica</i> / 3.0 Lbs / AC <i>Festuca californica</i> / 2.0 Lbs / AC <i>Hordeum brachyantherum</i> / 10.0 Lbs / AC <i>Muhlenbergia rigens</i> / 2.0 Lbs / AC
☀	SMALLER ACCENT SHRUBS - 5 GAL - LOW WATER <i>Agave desmetiana</i> 'Varegata' / Variegated Agave <i>Aloe striata</i> / Coral Aloe <i>Hesperaloe parviflora</i> / Red Yucca - Space 4" o.c. <i>Lantana x 'New Gold'</i> / New Gold Lantana Space 3" o.c. <i>Salvia greggii</i> 'Fumans Red' / Furman's Red Salvia <i>Yucca filamentosa</i> 'Color Guard' / Adam's Needle - Space 4" o.c.		

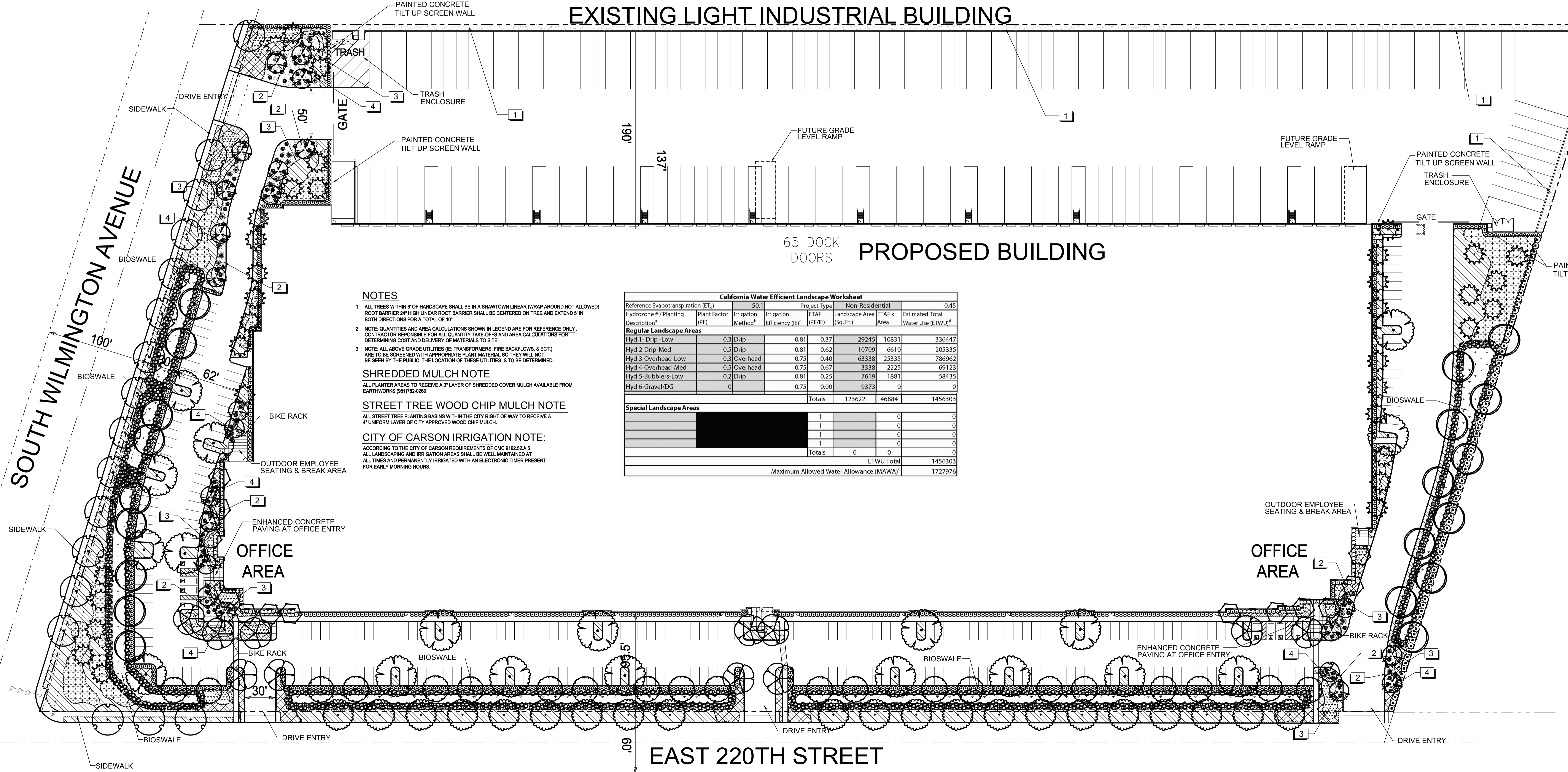
▨	GROUND COVER PALETTE - LOW WATER USE - 1 GAL <i>Acacia reticulata</i> 'Desert Carpet' TM / Bank Cattail Space 4" o.c. <i>Baccharis pilularis</i> 'Pigeon Point' / Coyote Brush - Space 4" o.c. <i>Lantana montevidensis</i> 'New Gold' / Trailing Lantana Space 3" o.c. <i>Myoporum parvifolium</i> 'Putah Creek' / Putah Creek Myoporum Space 3" o.c. <i>Rosmarinus officinalis</i> 'Huntington Carpet' / Huntington Carpet Rosemary - Space 3" o.c.
▨	GROUND COVER PALETTE - MEDIUM WATER USE - 1 GAL <i>Hemerocallis x 'Bitsy'</i> / Yellow Daylily Space 2" o.c. <i>Rosa x 'Flower Carpet Pink'</i> / Rose Space 3" o.c. <i>Rosa x 'Flower Carpet Red'</i> / Rose Space 3" o.c. <i>Trachelospermum jasminoides</i> / Star Jasmine Space 18" o.c.

REFERENCE NOTES SCHEDULE

SYMBOL	DESCRIPTION
1	3" THICK X 3/4" NATURAL COLORED GRAVEL OVER PERMEABLE WEED BARRIER
2	3" THICK 3/4" DECORATIVE CRUSHED ROCK GRAVEL - DESERT GOLD OVER WEED BARRIER WITH 2'-3" BOULDERS TYPICAL (GRAVEL AND BOULDERS AVAILABLE FROM SOUTHWEST BOULDER - (877) 742-7625)
3	6"X6" CONCRETE MON CURB TO SEPARATE SHRUB AREAS FROM ROCK
4	2'-3" BOULDERS TYPICAL - DESERT GOLD - AVAILABLE FROM SOUTHWEST BOULDER & STONE (877) 742-7625

EXISTING LIGHT INDUSTRIAL BUILDING

PROPOSED BUILDING



NOTES

- ALL TREES WITHIN 8' OF HARDSCAPE SHALL BE IN A SHAWTOWN LINEAR (WRAP AROUND NOT ALLOWED) ROOT BARRIER 24" HIGH LINEAR ROOT BARRIER SHALL BE CENTERED ON TREE AND EXTEND 8" IN BOTH DIRECTIONS FOR A TOTAL OF 10'
- NOTE: QUANTITIES AND AREA CALCULATIONS SHOWN IN LEGEND ARE FOR REFERENCE ONLY. CONTRACTOR RESPONSIBLE FOR ALL QUANTITY TAKE-OFFS AND AREA CALCULATIONS FOR DETERMINING COST AND DELIVERY OF MATERIALS TO SITE.
- NOTE: ALL ABOVE GRADE UTILITIES (IE: TRANSFORMERS, FIRE BACKLOGS, ECT.) ARE TO BE SCREENED WITH APPROPRIATE PLANT MATERIAL SO THEY WILL NOT BE SEEN BY THE PUBLIC. THE LOCATION OF THESE UTILITIES IS TO BE DETERMINED.

SHREDDED MULCH NOTE
ALL PLANTER AREAS TO RECEIVE A 3" LAYER OF SHREDDED COVER MULCH AVAILABLE FROM EARTHWORKS (951) 92-0280

STREET TREE WOOD CHIP MULCH NOTE
ALL STREET TREE PLANTING BASINS WITHIN THE CITY RIGHT OF WAY TO RECEIVE A 4" UNIFORM LAYER OF CITY APPROVED WOOD CHIP MULCH.

CITY OF CARSON IRRIGATION NOTE:
ACCORDING TO THE CITY OF CARSON REQUIREMENTS OF CMC 9182.52.A.5 ALL LANDSCAPING AND IRRIGATION AREAS SHALL BE WELL MAINTAINED AT ALL TIMES AND PERMANENTLY IRRIGATED WITH AN ELECTRONIC TIMER PRESENT FOR EARLY MORNING HOURS.

California Water Efficient Landscape Worksheet						
Reference Evapotranspiration (ET _r)	50.1	Project Type	Non-Residential			0.45
Hydrozone # / Planting Description*	Plant Factor (PF)	Irrigation Method ^b	Irrigation Efficiency (IE) ^c	ETAF (PF/IE)	Landscape Area (Sq. Ft.)	Estimated Total Water Use (ETWU) ^d
Regular Landscape Areas						
Hyd 1- Drip-Low	0.3	Drip	0.81	0.37	29245	10831
Hyd 2-Drip-Med	0.5	Drip	0.81	0.62	10709	6610
Hyd 3-Overhead-Low	0.3	Overhead	0.75	0.40	63338	25335
Hyd 4-Overhead-Med	0.5	Overhead	0.75	0.67	3338	2225
Hyd 5-Bubblers-Low	0.2	Drip	0.81	0.25	7619	1881
Hyd 6-Gravel/DG	0		0.75	0.00	9373	0
Totals					123622	46884
Special Landscape Areas						
					1	0
					1	0
					1	0
					1	0
Totals					0	0
ETWU Total						1456303
Maximum Allowed Water Allowance (MAWA) ^e						1727976

