



OWNER
JJ.ER, LLC

1700 S. Wilmington Ave., Compton, CA 90220

CALIFORNIA PAK

17706 S. MAIN ST., CARSON, CA

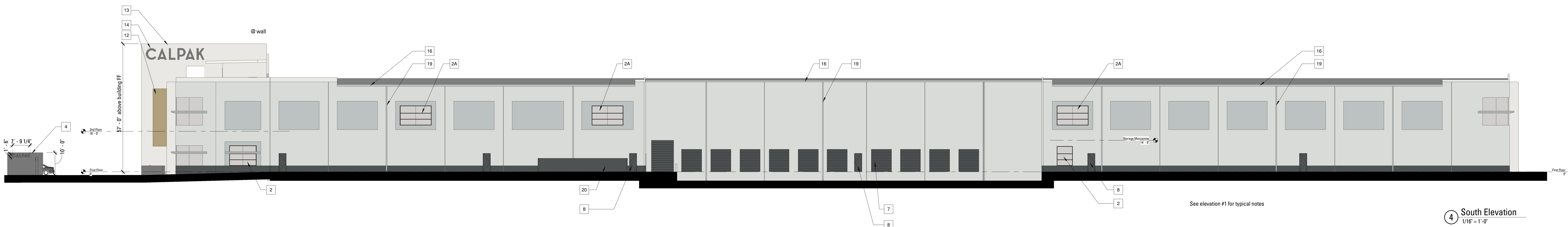
Building Elevations

CURRENT SHEET
ISSUE DATE: 06/05/2017

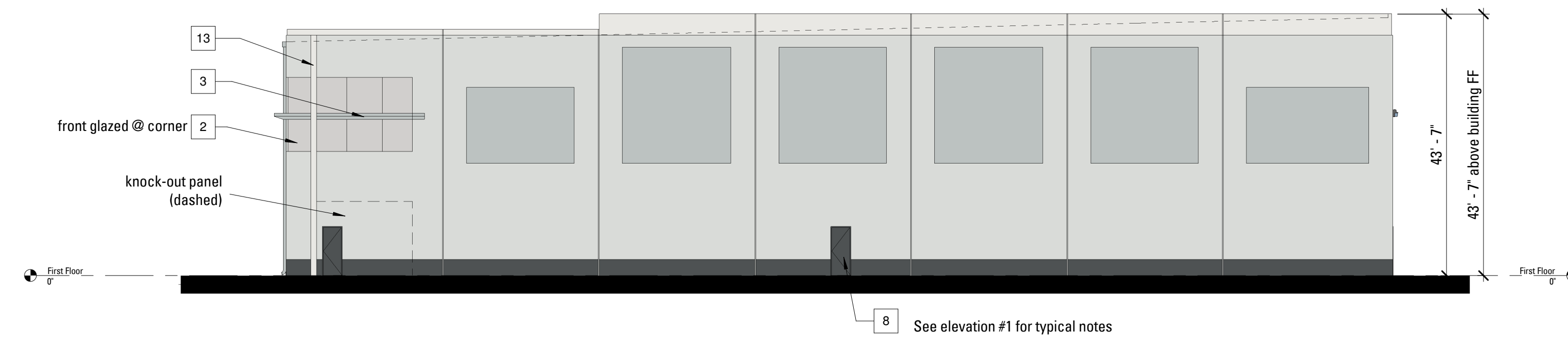
Clouded Revisions

Number	Date	Description

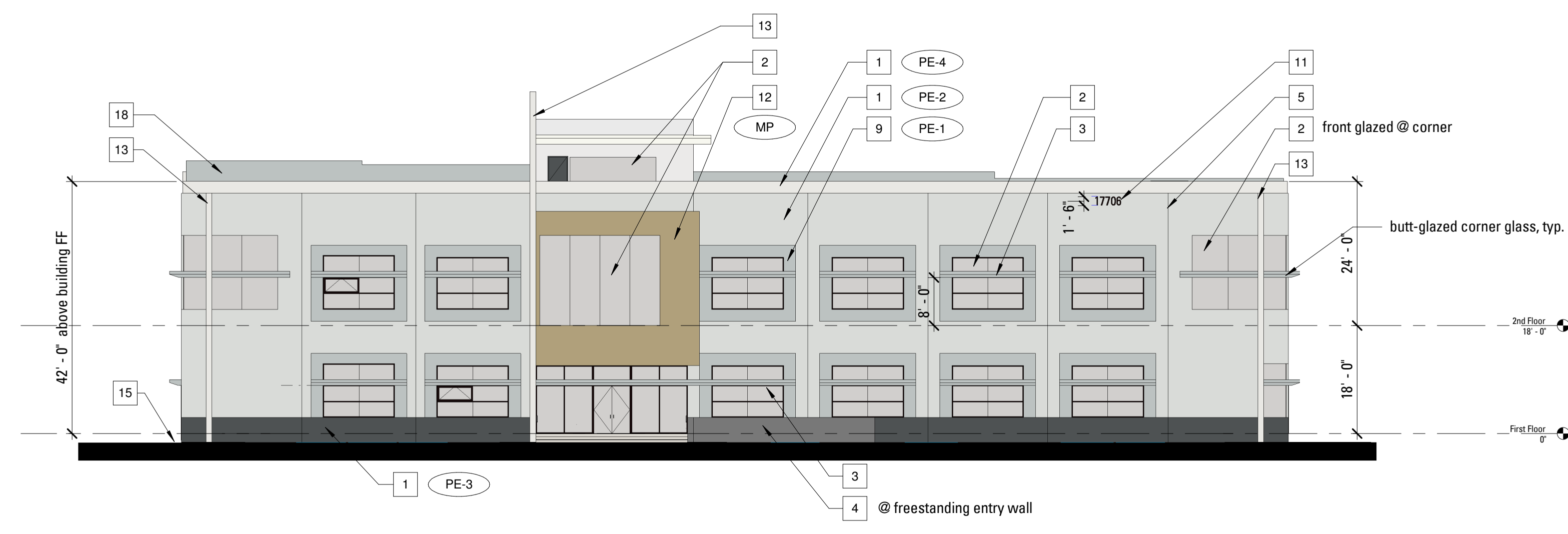
PREPARED BY: GLENN BUTLER
FILE MODIFIED: 6/5/2017 5:53:06 PM



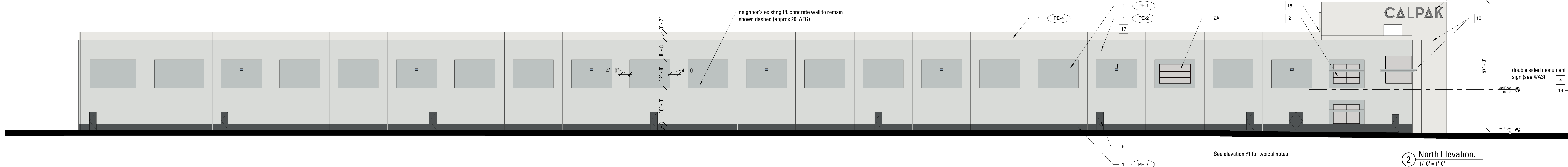
4 South Elevation
1/16" = 1'-0"



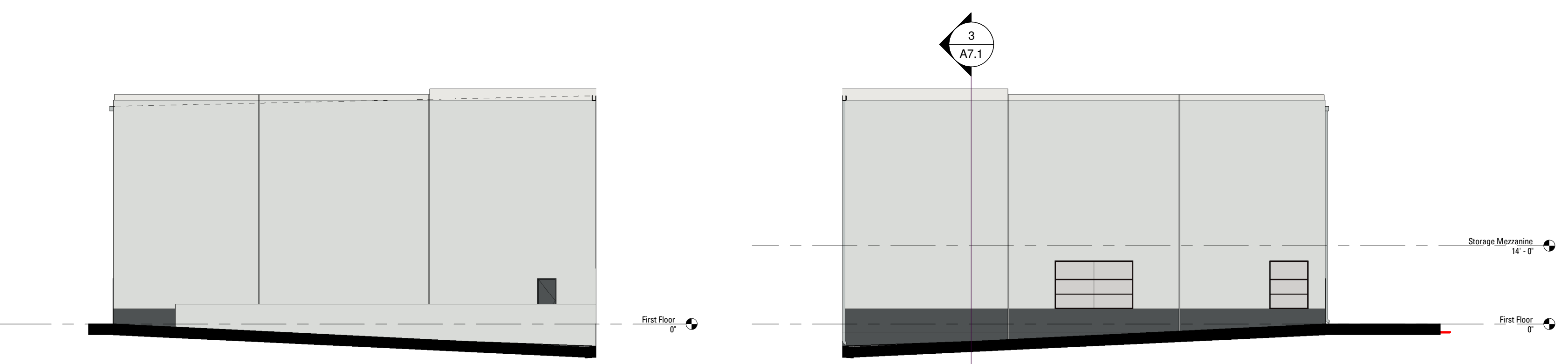
3 East Elevation
1/16" = 1'-0"



1 West Elevation
1/16" = 1'-0"



2 North Elevation
1/16" = 1'-0"



8 Loading Dock - West Elevation
1/16" = 1'-0"

5 Loading Docks - East Elevation
1/16" = 1'-0"

PAINT COLORS

- PE 1 Exterior Paint, ACCENT COLOR
ICI 'Cornerstone' 30BG 56/019
- PE 2 Exterior Paint, MAIN COLOR
ICI 'Tulle White' 30BG 72/006
- PE 3 Exterior Paint, DARK ACCENT COLOR
ICI 'Equinox' 50BG/10/019
- PE 4 Exterior Paint, LIGHT ACCENT COLOR

ELEVATION NOTES

- 1 SMOOTH FINISH CONCRETE WALLS, PAINTED
- 2 1" DUAL GLAZED GRAY TINTED GLAZING @ OFFICE AREAS
ANODIZED ALUM FRONT GLAZED STOREFRONT, COLOR: STANDARD DARK BRONZE
1. OUTER GLAZING-1/4" GRAY TINTED GLASS
WITH PERFORMANCE COATING ON THE INNER SURFACE
2. INNER GLAZING-1/4" CLEAR GLASS
- 2A 1/4" GRAY TINTED GLASS @ WAREHOUSE AREAS & SPANDREL PANELS
(SAME AS ABOVE WITHOUT THE INNER GLASS)
ANODIZED ALUM FRONT GLAZED STOREFRONT, COLOR: STANDARD DARK BRONZE
- 3 CONCRETE SHADING FIN PAINTED (PE 1)
- 4 BOARD-FORMED CONCRETE WALL (@ ENTRY RAMP & MONUMENT SIGN)
(NATURAL FINISH, W/ CLEAR ANTI-GRAFFITI COATING, AS REQ.)
- 5 VERTICAL PANEL JOINTS W/ CHAMFERED PANEL EDGES, TYP UNO
- 6 HORIZONTAL PANEL JOINTS W/ CHAMFERED PANEL EDGES
- 7 METAL OVERHEAD TRUCK DOOR WITH FACTORY VIEW WINDOW-
PAINTED TO MATCH WALL BASE (PE 3)
- 8 HOLLOW CORE MTL DOOR, PAINTED TO ADJ. MATCH WALL BASE (PE 3)
- 9 2" DEEP +/- RECESSED WALL PANEL AREAS, PAINTED (PE 1)
- 10 GALV METAL DOWNSPOUT & OVERFLOW SCUPPER,
NOT YET LOCATED ON PLANS
- 11 BUILDING ADDRESS - 18" HIGH, COLOR TO MATCH STOREFRONT SYSTEM
- 12 METAL PANELS AT CANTILEVERED ROOM, ALUCOBOND 'HARVEST GOLD MICA COOL'
(JOINTS NOT SHOWN)
- 13 SACKED NATURAL CONCRETE
- 14 USER SIGNAGE: 5' HIGH @ FIN WALL (DOUBLE-SIDED)
1.5' HIGH AT MONUMENT SIGN (DOUBLE-SIDED)
- 15 ADJACENT GRADE VARIES SEE CIVIL
- 16 METAL BOX GUTTER, PAINTED (PE 1)
- 17 WALL PACK LIGHT- BOT OF FIXTURE +/- 27 AFF
- 18 FIRE WALL PARAPET, +30" MIN ABOVE ROOF
- 19 RECTANGULAR METAL DOWNSPOUT, PAINTED (PE 1)
- 20 PAINTED CONCRETE TRASH ENCLOSURE W/ METAL GATES,
BOTH PAINTED TO MATCH BUILDING 'DARK ACCENT COLOR' (PE 3)