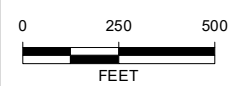
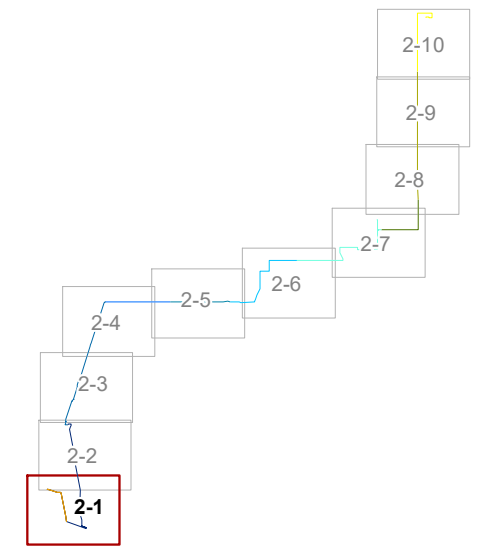


**LEGEND:**

- City Boundary
- New Pipeline Segment
- Existing Pipeline Segment**
  - PP Line 12 Crude 1150, Seg. 2
  - PP Line 12 Crude 244, Seg. 1
  - PP Line 12 Crude 244, Seg. 2
  - PP Line 4, Seg. 3
  - PP Line 4, Seg. 4
  - PP Line 4, Seg. 5
  - PP Line 4, Seg. 6
  - PP Line 4, Seg. 7
  - PP Line 4, Seg. 8

**MAP EXTENT:**



Source: Paramount Pipeline Co., NAIP Imagery 2016, County of Los Angeles  
 Coordinate System: NAD 1983 StatePlane California V FIPS 0405 Feet  
 Notes: This map was created for informational and display purposes only.



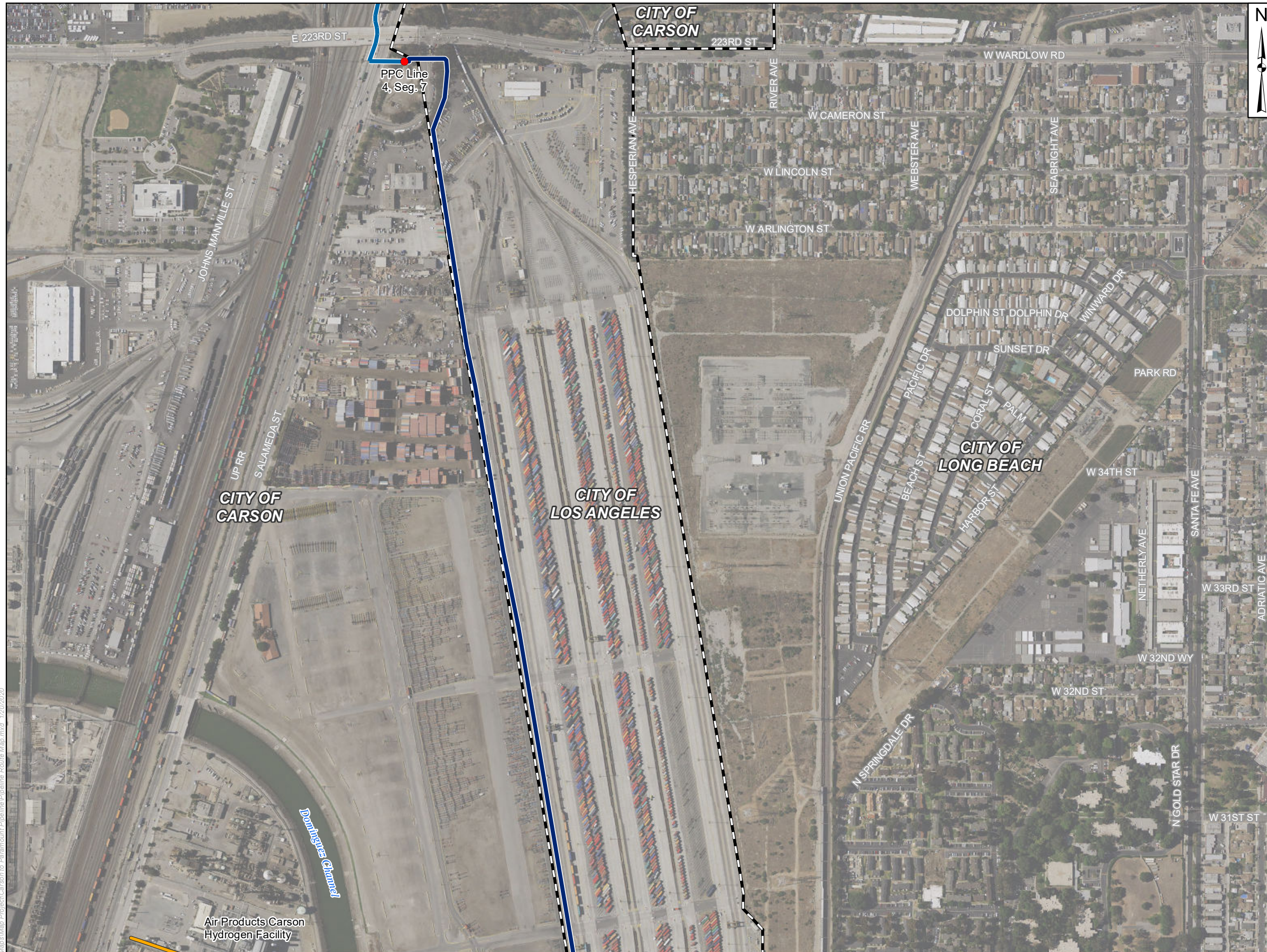
PROJECT NAME: CARSON TO PARAMOUNT HYDROGEN PIPELINE PROJECT LOS ANGELES COUNTY, CA	
PROJECT NUMBER: 1802-2611	DATE: April 2020

**PIPELINE ROUTE MAP**

**FIGURE 2-1**

F:\GIS\Projects\GIS Maps\Map - Project\Carson to Paramount Pipeline Pipeline Route Map.mxd - 1/20/2020

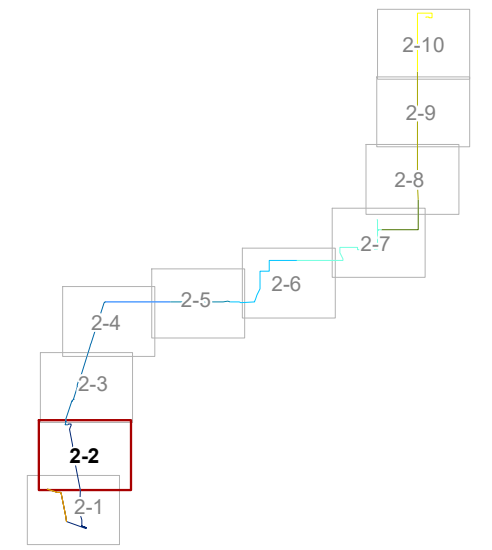




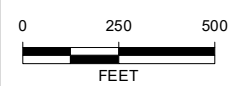
**LEGEND:**

- Segment Marker
- ▭ City Boundary
- New Pipeline Segment
- Existing Pipeline Segment**
- PP Line 12 Crude 1150, Seg. 2
- PP Line 12 Crude 244, Seg. 1
- PP Line 12 Crude 244, Seg. 2
- PP Line 4, Seg. 3
- PP Line 4, Seg. 4
- PP Line 4, Seg. 5
- PP Line 4, Seg. 6
- PP Line 4, Seg. 7
- PP Line 4, Seg. 8

**MAP EXTENT:**



F:\GIS\Projects\GIS Maps\Map to Paramount\PipelineRoute Maps.mxd - 1/20/2020



Source: Paramount Pipeline Co., NAIP Imagery 2016, County of Los Angeles  
 Coordinate System: NAD 1983 StatePlane California V FIPS 0405 Feet  
 Notes: This map was created for informational and display purposes only.



PROJECT NAME: CARSON TO PARAMOUNT HYDROGEN PIPELINE PROJECT LOS ANGELES COUNTY, CA	
PROJECT NUMBER: 1802-2611	DATE: April 2020

**PIPELINE ROUTE MAP** FIGURE 2-2

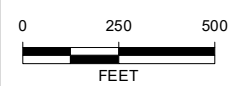
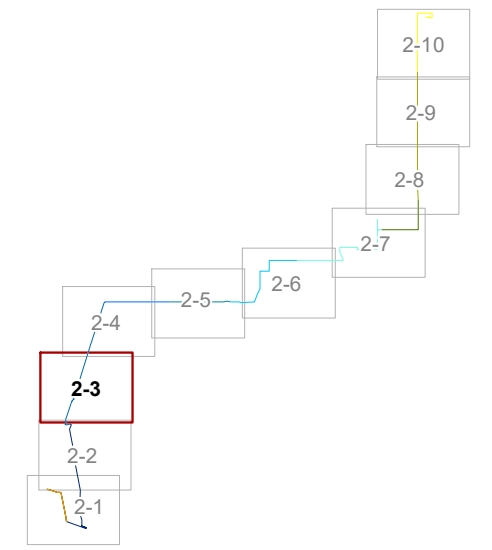




**LEGEND:**

- City Boundary
- New Pipeline Segment
- Existing Pipeline Segment**
  - PP Line 12 Crude 1150, Seg. 2
  - PP Line 12 Crude 244, Seg. 1
  - PP Line 12 Crude 244, Seg. 2
  - PP Line 4, Seg. 3
  - PP Line 4, Seg. 4
  - PP Line 4, Seg. 5
  - PP Line 4, Seg. 6
  - PP Line 4, Seg. 7
  - PP Line 4, Seg. 8

**MAP EXTENT:**



Source: Paramount Pipeline Co., NAIP Imagery 2016, County of Los Angeles  
 Coordinate System: NAD 1983 StatePlane California V FIPS 0405 Feet  
 Notes: This map was created for informational and display purposes only.



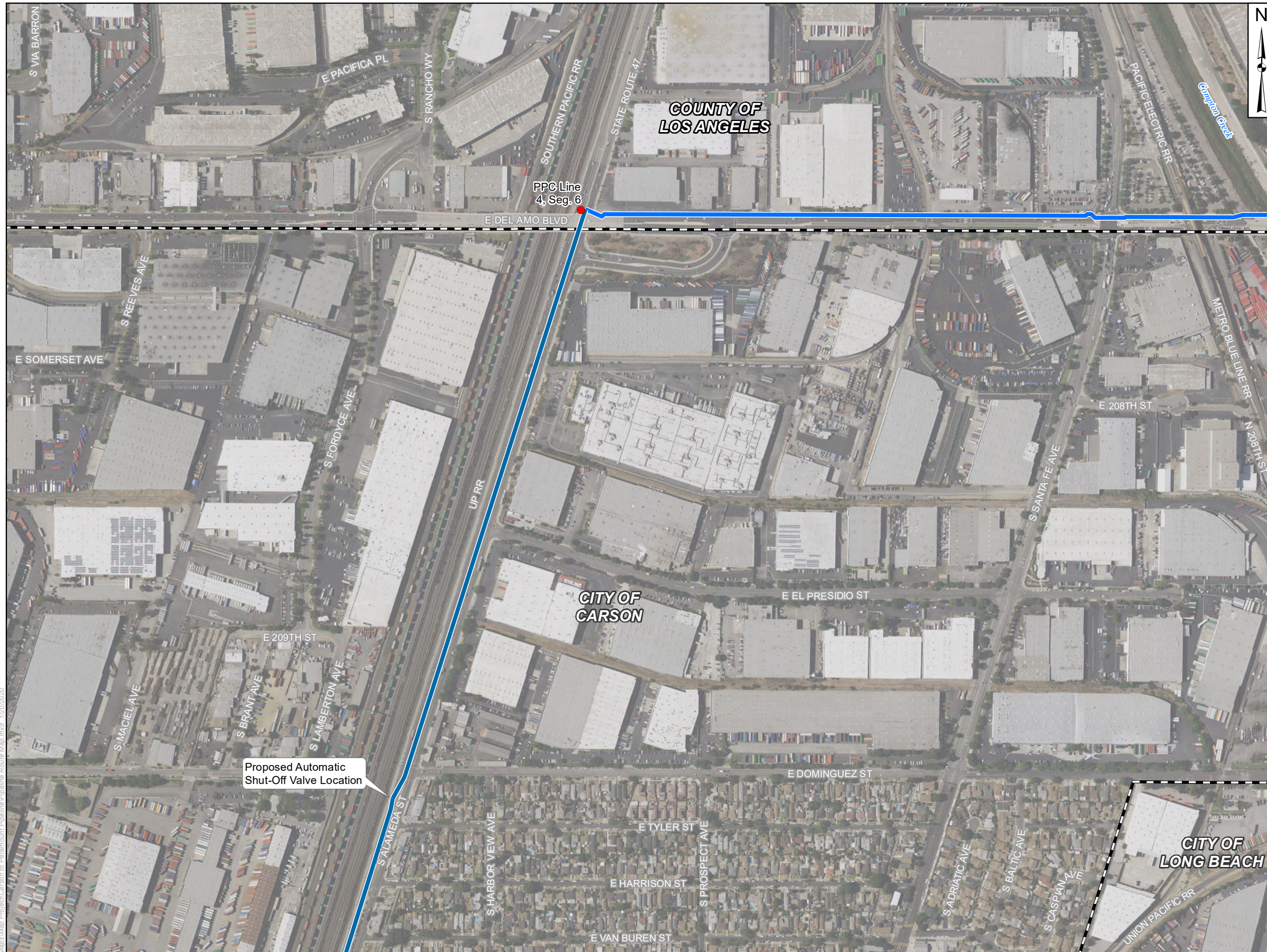
PROJECT NAME: CARSON TO PARAMOUNT HYDROGEN PIPELINE PROJECT LOS ANGELES COUNTY, CA	
PROJECT NUMBER: 1802-2611	DATE: April 2020

**PIPELINE ROUTE MAP**

**FIGURE 2-3**

E:\GIS\Projects\GIS Maps\Map - Paramount Pipeline Pipeline Route Map.mxd - 1/20/2020

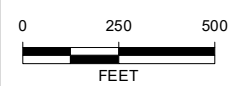
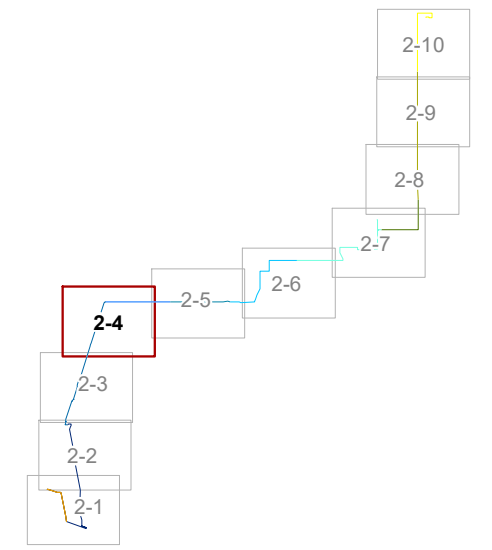




**LEGEND:**

- Segment Marker
- City Boundary
- New Pipeline Segment
- Existing Pipeline Segment**
- PP Line 12 Crude 1150, Seg. 2
- PP Line 12 Crude 244, Seg. 1
- PP Line 12 Crude 244, Seg. 2
- PP Line 4, Seg. 3
- PP Line 4, Seg. 4
- PP Line 4, Seg. 5
- PP Line 4, Seg. 6
- PP Line 4, Seg. 7
- PP Line 4, Seg. 8

**MAP EXTENT:**



Source: Paramount Pipeline Co., NAI Imagery 2016, County of Los Angeles  
 Coordinate System: NAD 1983 StatePlane California V FIPS 0405 Feet  
 Notes: This map was created for informational and display purposes only.



PROJECT NAME: CARSON TO PARAMOUNT HYDROGEN PIPELINE PROJECT LOS ANGELES COUNTY, CA	
PROJECT NUMBER: 1802-2611	DATE: April 2020

**PIPELINE ROUTE MAP** FIGURE 2-4

F:\GIS\Projects\GIS Maps\Map - Project\Carson to Paramount\PipelineRoute Map.mxd - 1/20/2020

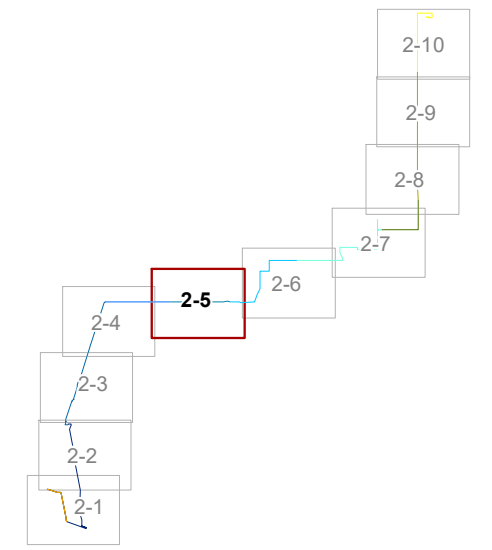




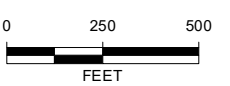
**LEGEND:**

- Segment Marker
- City Boundary
- New Pipeline Segment
- Existing Pipeline Segment**
- PP Line 12 Crude 1150, Seg. 2
- PP Line 12 Crude 244, Seg. 1
- PP Line 12 Crude 244, Seg. 2
- PP Line 4, Seg. 3
- PP Line 4, Seg. 4
- PP Line 4, Seg. 5
- PP Line 4, Seg. 6
- PP Line 4, Seg. 7
- PP Line 4, Seg. 8

**MAP EXTENT:**



F:\GIS\Projects\GIS Maps\Map - Paramount Pipeline Pipeline Route Map.mxd - 1/20/2020



Source: Paramount Pipeline Co., NAIP Imagery 2016, County of Los Angeles  
 Coordinate System: NAD 1983 StatePlane California V FIPS 0405 Feet  
 Notes: This map was created for informational and display purposes only.



PROJECT NAME: CARSON TO PARAMOUNT HYDROGEN PIPELINE PROJECT LOS ANGELES COUNTY, CA	
PROJECT NUMBER: 1802-2611	DATE: April 2020

**PIPELINE ROUTE MAP**

**FIGURE 2-5**

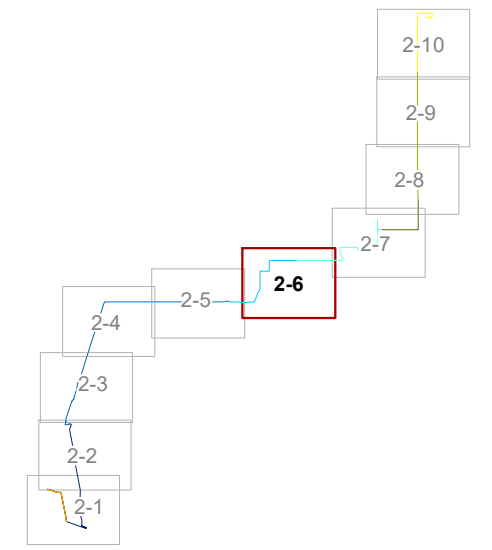




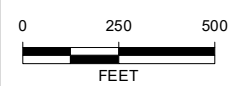
**LEGEND:**

- Segment Marker
- ▭ City Boundary
- New Pipeline Segment
- Existing Pipeline Segment**
- PP Line 12 Crude 1150, Seg. 2
- PP Line 12 Crude 244, Seg. 1
- PP Line 12 Crude 244, Seg. 2
- PP Line 4, Seg. 3
- PP Line 4, Seg. 4
- PP Line 4, Seg. 5
- PP Line 4, Seg. 6
- PP Line 4, Seg. 7
- PP Line 4, Seg. 8

**MAP EXTENT:**



GIS Projects GIS Maps Map Project Carson to Paramount Pipeline Route Map.mxd 1/20/2020



Source: Paramount Pipeline Co., NAIP Imagery 2016, County of Los Angeles  
 Coordinate System: NAD 1983 StatePlane California V FIPS 0405 Feet  
 Notes: This map was created for informational and display purposes only.

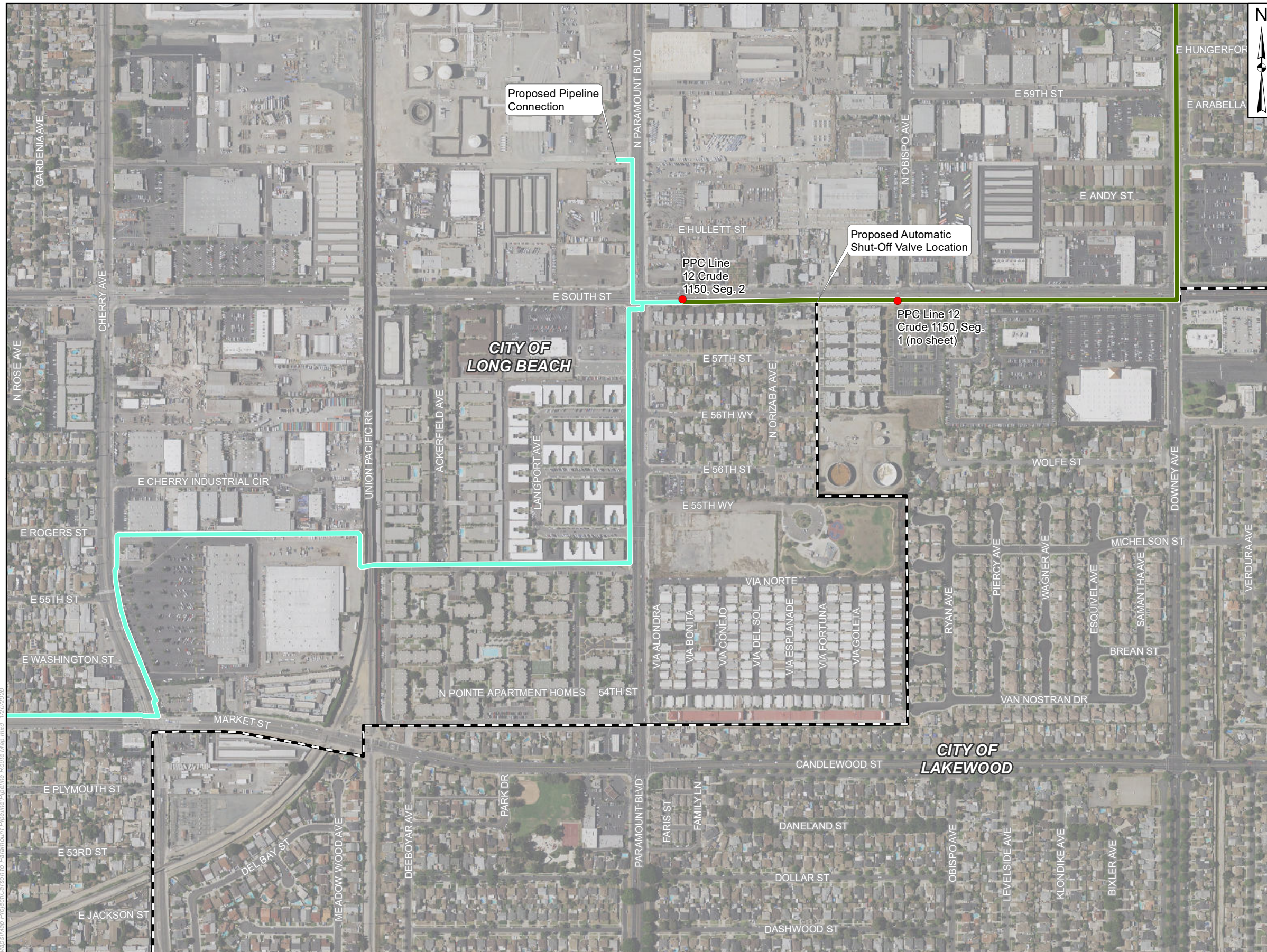


PROJECT NAME: CARSON TO PARAMOUNT HYDROGEN PIPELINE PROJECT LOS ANGELES COUNTY, CA	
PROJECT NUMBER: 1802-2611	DATE: April 2020

**PIPELINE ROUTE MAP**

**FIGURE 2-6**

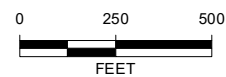
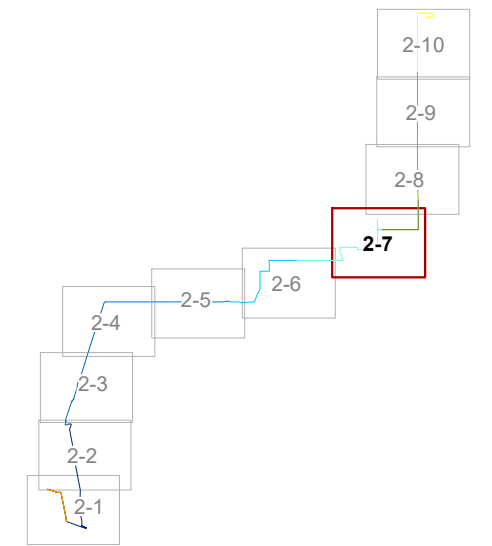




**LEGEND:**

- Segment Marker
- ◻ City Boundary
- New Pipeline Segment
- Existing Pipeline Segment**
- PP Line 12 Crude 1150, Seg. 2
- PP Line 12 Crude 244, Seg. 1
- PP Line 12 Crude 244, Seg. 2
- PP Line 4, Seg. 3
- PP Line 4, Seg. 4
- PP Line 4, Seg. 5
- PP Line 4, Seg. 6
- PP Line 4, Seg. 7
- PP Line 4, Seg. 8

**MAP EXTENT:**



Source: Paramount Pipeline Co., NAIP Imagery 2016, County of Los Angeles  
 Coordinate System: NAD 1983 StatePlane California V FIPS 0405 Feet  
 Notes: This map was created for informational and display purposes only.

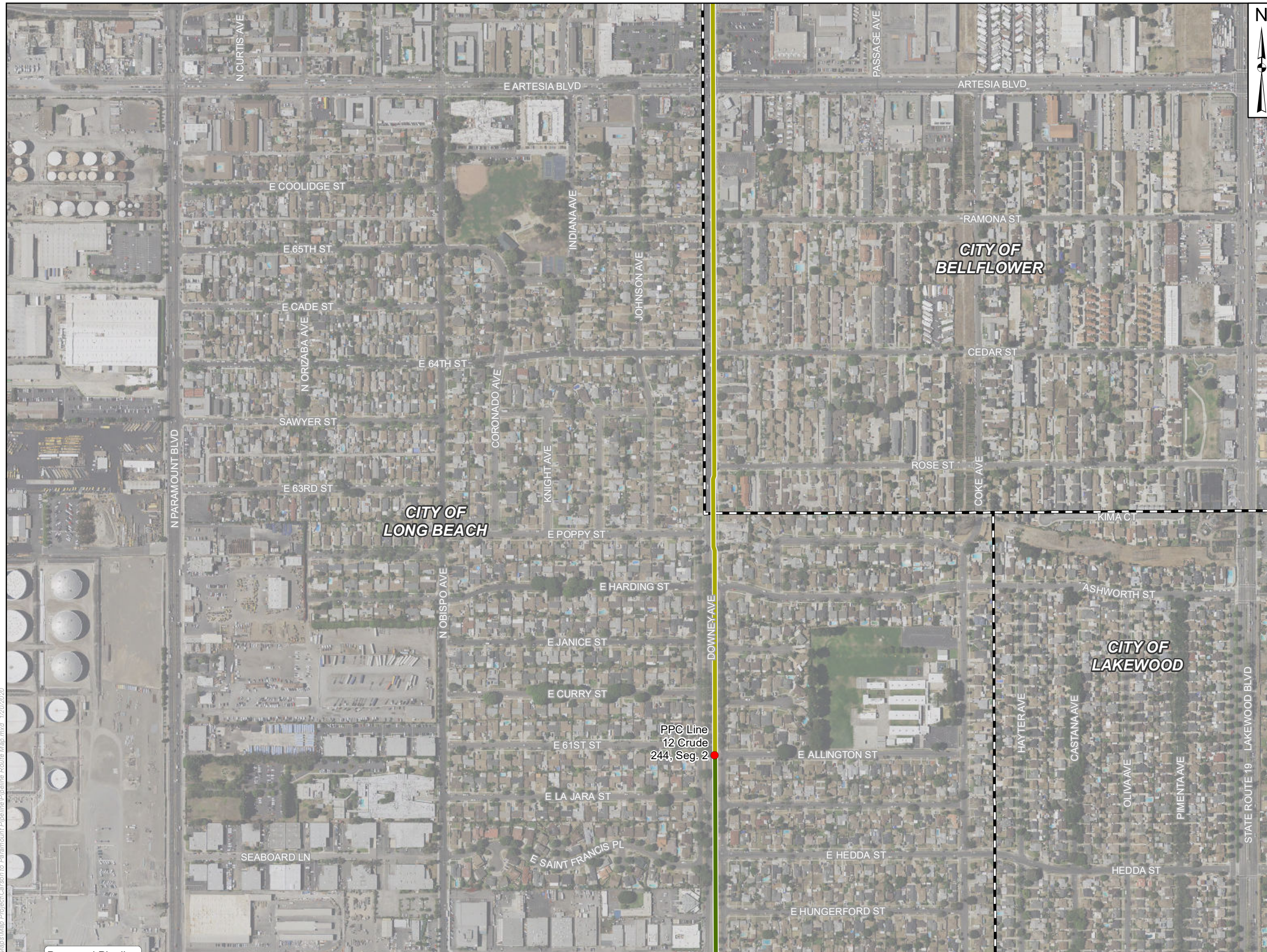


PROJECT NAME: CARSON TO PARAMOUNT HYDROGEN PIPELINE PROJECT LOS ANGELES COUNTY, CA  
 PROJECT NUMBER: 1802-2611  
 DATE: April 2020

**PIPELINE ROUTE MAP**

FIGURE 2-7

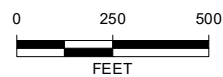
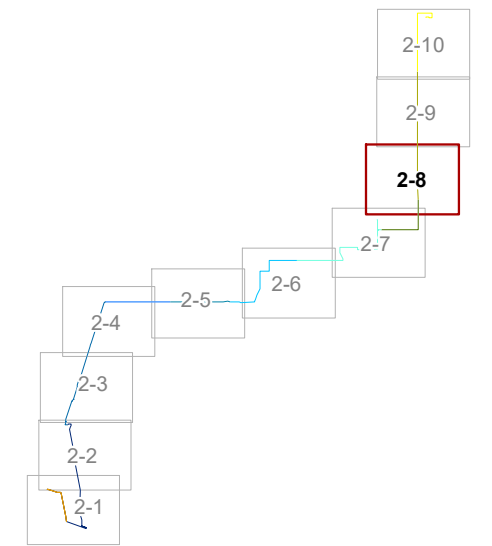




**LEGEND:**

- Segment Marker
- City Boundary
- New Pipeline Segment
- Existing Pipeline Segment**
- PP Line 12 Crude 1150, Seg. 2
- PP Line 12 Crude 244, Seg. 1
- PP Line 12 Crude 244, Seg. 2
- PP Line 4, Seg. 3
- PP Line 4, Seg. 4
- PP Line 4, Seg. 5
- PP Line 4, Seg. 6
- PP Line 4, Seg. 7
- PP Line 4, Seg. 8

**MAP EXTENT:**



Source: Paramount Pipeline Co., NAIP Imagery 2016, County of Los Angeles  
 Coordinate System: NAD 1983 StatePlane California V FIPS 0405 Feet  
 Notes: This map was created for informational and display purposes only.



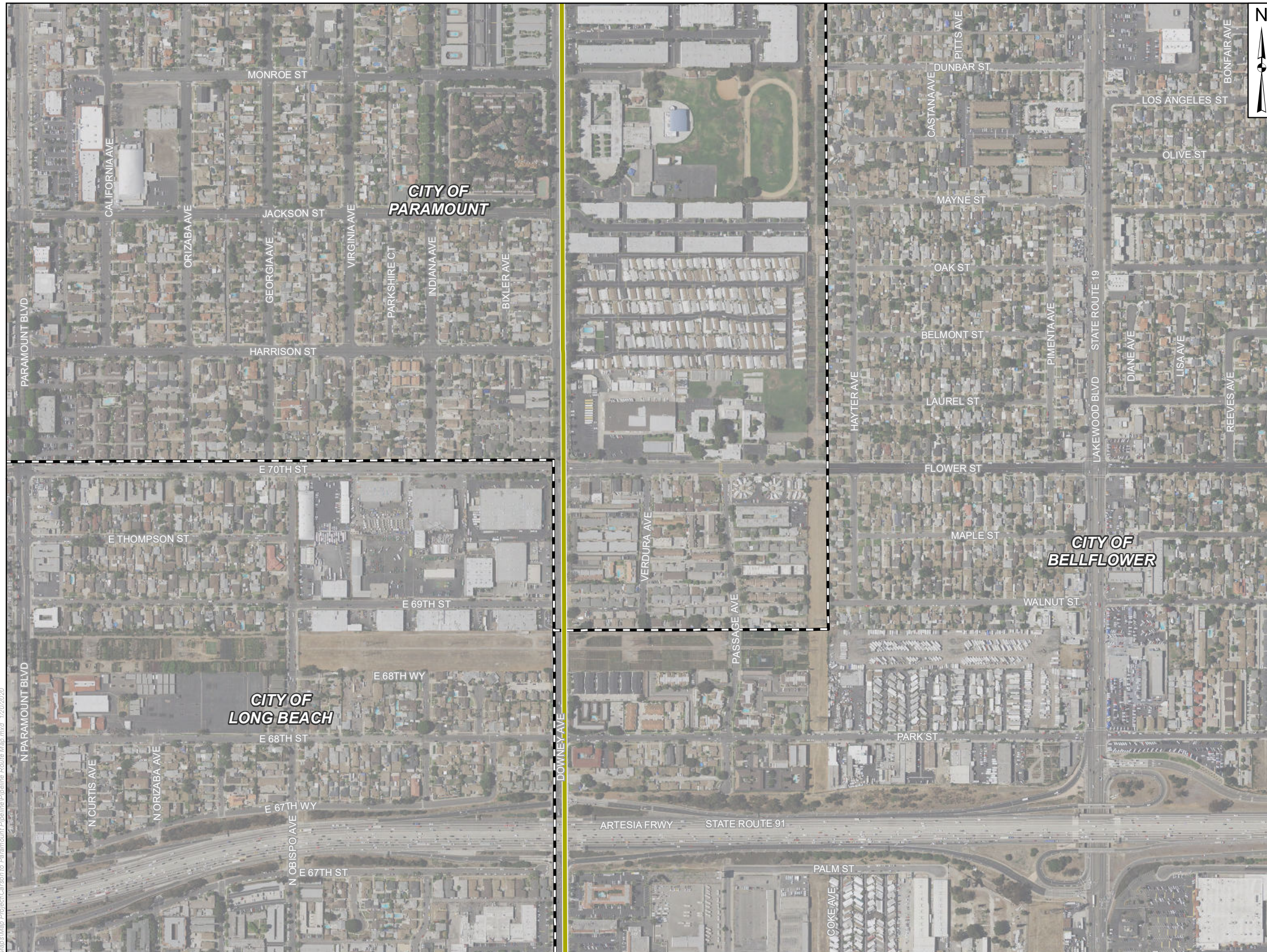
PROJECT NAME: CARSON TO PARAMOUNT HYDROGEN PIPELINE PROJECT LOS ANGELES COUNTY, CA  
 PROJECT NUMBER: 1802-2611  
 DATE: April 2020

**PIPELINE ROUTE MAP**




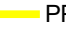







FIGURE 2-8

F:\GIS\Projects\GIS Maps\Map\_Carson to Paramount Pipeline Pipeline Route Map.mxd - 1/20/2020

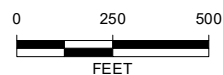
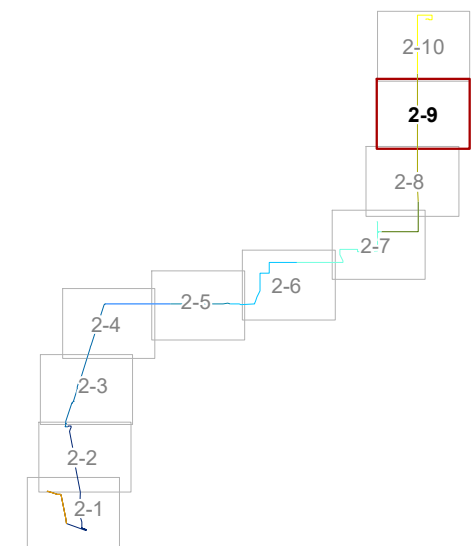




**LEGEND:**

-  City Boundary
-  New Pipeline Segment
- Existing Pipeline Segment**
-  PP Line 12 Crude 1150, Seg. 2
-  PP Line 12 Crude 244, Seg. 1
-  PP Line 12 Crude 244, Seg. 2
-  PP Line 4, Seg. 3
-  PP Line 4, Seg. 4
-  PP Line 4, Seg. 5
-  PP Line 4, Seg. 6
-  PP Line 4, Seg. 7
-  PP Line 4, Seg. 8

**MAP EXTENT:**



Source: Paramount Pipeline Co., NAIP Imagery 2016, County of Los Angeles  
 Coordinate System: NAD 1983 StatePlane California V FIPS 0405 Feet  
 Notes: This map was created for informational and display purposes only.



PROJECT NAME: CARSON TO PARAMOUNT HYDROGEN PIPELINE PROJECT LOS ANGELES COUNTY, CA  
 PROJECT NUMBER: 1802-2611  
 DATE: April 2020

**PIPELINE ROUTE MAP**

FIGURE 2-9

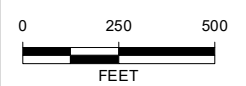
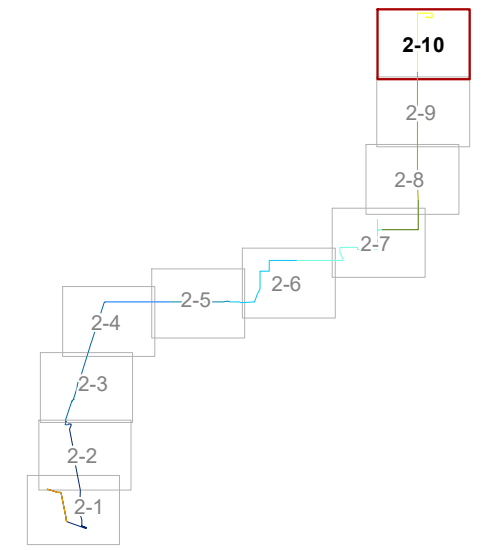




**LEGEND:**

- Segment Marker
- City Boundary
- New Pipeline Segment
- Existing Pipeline Segment**
- PP Line 12 Crude 1150, Seg. 2
- PP Line 12 Crude 244, Seg. 1
- PP Line 12 Crude 244, Seg. 2
- PP Line 4, Seg. 3
- PP Line 4, Seg. 4
- PP Line 4, Seg. 5
- PP Line 4, Seg. 6
- PP Line 4, Seg. 7
- PP Line 4, Seg. 8

**MAP EXTENT:**



Source: Paramount Pipeline Co., NAIP Imagery 2016, County of Los Angeles  
 Coordinate System: NAD 1983 StatePlane California V FIPS 0405 Feet  
 Notes: This map was created for informational and display purposes only.



PROJECT NAME: CARSON TO PARAMOUNT HYDROGEN PIPELINE PROJECT LOS ANGELES COUNTY, CA	
PROJECT NUMBER: 1802-2611	DATE: April 2020

**PIPELINE ROUTE MAP** FIGURE 2-10

E:\GIS\Projects\GIS Maps\Map to Paramount Pipeline\Map Route Map.mxd - 1/20/2020