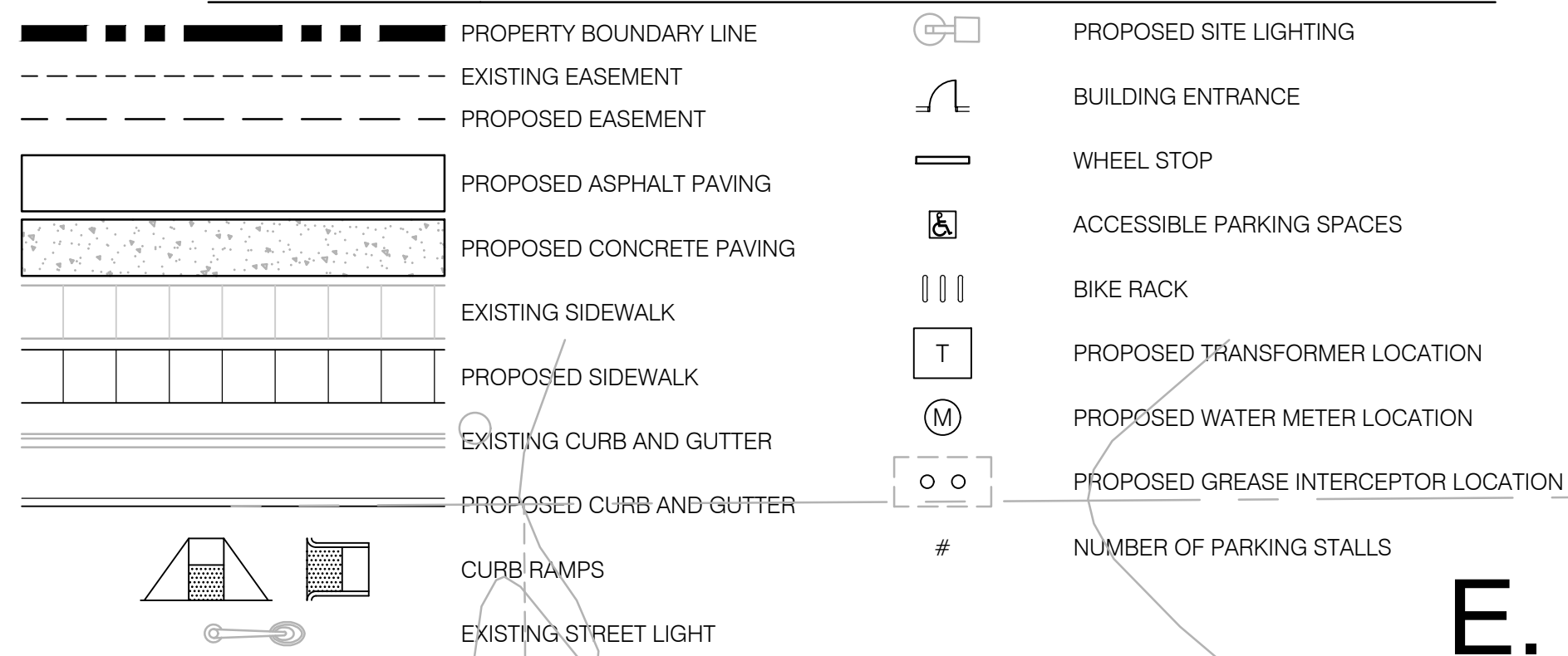


**SITE LEGEND**



**GENERAL CONDITIONS**

GENERAL CONTRACTOR SHALL NOTE THAT ALL WORK TO BE DONE SUCH AS EXCAVATIONS, TRENCHES, CAISSONS, WALLS, ETC., AS INDICATED ON DRAWINGS, IS SHOWN WITHOUT KNOWLEDGE OF UNDERGROUND UTILITIES ON THIS PARTICULAR SITE. THE ARCHITECT AND OWNER ASSUME NO RESPONSIBILITY FOR DETERMINING THEIR LOCATION, SIZE, DEPTH, OR HAZARD.

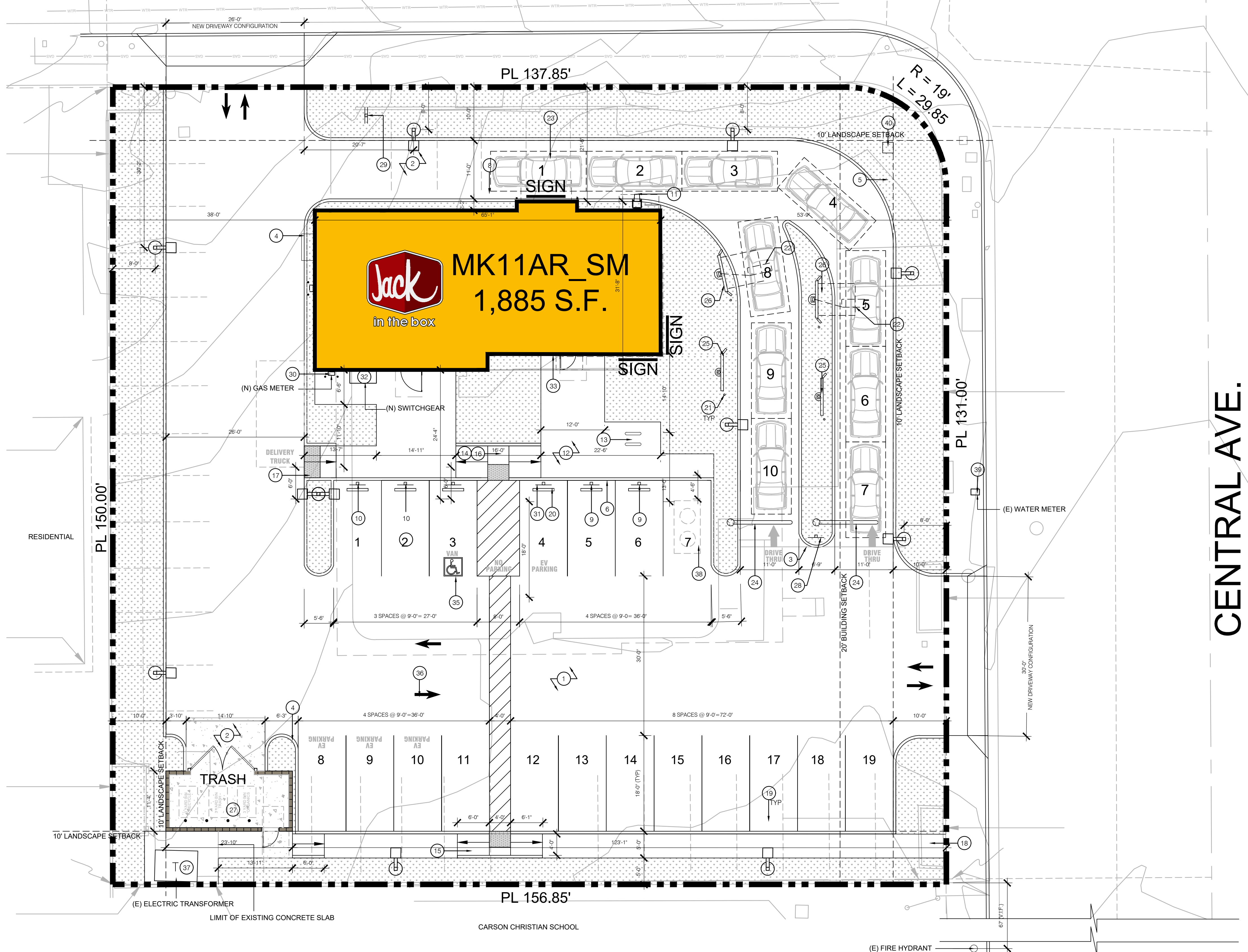
**GENERAL NOTES**

- REFER TO THE ACCESSIBILITY AND DIMENSIONING PLAN, SHEET SD1.1, FOR HORIZONTAL CONTROL INFORMATION AND JOINT DETAILING.
- GENERAL CONTRACTOR SHALL PROVIDE, AS REQUESTED BY CONSTRUCTION MANAGER, 'COMING SOON' SIGNAGE.
- ALL SITE CONCRETE PAVING SHALL BE SPRAYED WITH A CURING COMPOUND AS SOON AS CONCRETE IS SET UP.
- GENERAL CONTRACTOR SHALL PROVIDE 12"x12" LANDSCAPE PAVERS AT WINDOWS WHEN LANDSCAPE IS PROVIDED AROUND WINDOW AREAS.
- GENERAL CONTRACTOR SHALL PROVIDE ALL ADA SIGNS AND SIGNAGE POLES. SIGNS FOR ONLINE ORDER PICKUP AND DRIVE-THRU WAITING SIGNS SHALL BE OWNER FURNISHED. ALL SIGNAGE SHALL BE INSTALLED BY THE GENERAL CONTRACTOR.

PAVING SECTION THICKNESS			
PAVEMENT AREA	THICKNESS OF ASPHALT PAVING	THICKNESS OF CLASS II AGGREGATE BASE	THICKNESS OF CONCRETE PAVING
VEHICLE PARKING			
MAIN AISLES			
DRIVE-THRU LANE			SEE NOTE

NOTE:  
 1. CONCRETE PAVING TO BE REINFORCED W/ 6x6 - W1.4W1.4 W.W.M. AT MID DEPTH, TYPICAL, UNLESS OTHERWISE NOTED.  
 2. SEE SOILS REPORT UNDER SEPARATE COVER FOR ADDITIONAL INFORMATION.

**E. RADBARD ST.**

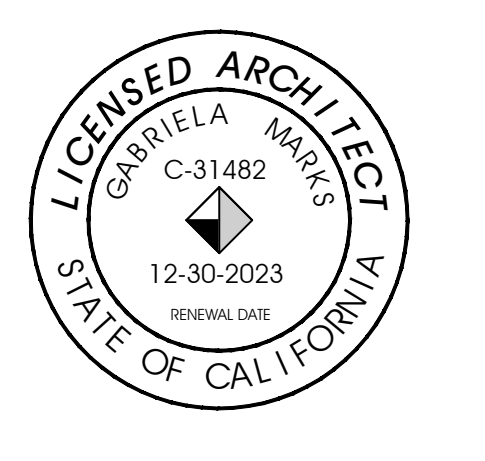


**KEY NOTES**

- INSTALL ASPHALT PAVING, REFER TO THE PAVING SECTION THICKNESS TABLE THIS SHEET AND GEOTECHNICAL RECOMMENDATIONS UNDER SEPARATE COVER.
- INSTALL CONCRETE PAVING, REFER TO THE PAVING SECTION THICKNESS TABLE THIS SHEET AND GEOTECHNICAL RECOMMENDATIONS UNDER SEPARATE COVER.
- PROVIDE THICKENED CONCRETE EDGE AT PAVING INTERFACE
- CONSTRUCT CONCRETE CURB AT ASPHALT PAVING
- CONSTRUCT CONCRETE CURB AT CONCRETE PAVING
- CONSTRUCT MONOLITHIC CONCRETE CURB AND SIDEWALK
- NOT USED.
- CONSTRUCT CONCRETE CURB AT BUILDING SIDE OF DRIVE-THRU LANE
- PROPOSED DRIVE-THRU WAITING SIGN
- PROPOSED ONLINE ORDER PICKUP SIGN
- PROPOSED DRIVE-UP WASTE CHUTE.
- INSTALL 4-INCH (MIN) THICK CONCRETE SIDEWALK WITH LIGHT BROOM FINISH.
- INSTALL U-BAR BIKE RACK(S)
- CONSTRUCT FLARE SIDED CURB RAMP
- CONSTRUCT IN-LINE CURB RAMP
- PROVIDE RAMP AND LANDINGS AT HANDICAP ACCESSIBLE PARKING SPACES, SEE
- CONSTRUCT DELIVERY RAMP
- PROVIDE PUBLIC RIGHT-OF-WAY ACCESS PER THE MUNICIPALITY STANDARDS.
- INSTALL LIGHT POLE BASE POLE AND FIXTURE REQUIREMENTS.
- INSTALL CONCRETE WHEEL STOP TYPICAL AT HANDICAP SPACES AND STANDARD SPACES FRONTING 6-FOOT OR LESSER WIDTH SIDEWALKS
- INSTALL BARRIER POSTS AT PREVIEW BOARD, MENU BOARD, AND PERIPHERAL TO BUILDING CORNERS
- INSTALL DETECTOR LOOP FOR ORDER BOARD
- INSTALL DETECTOR LOOP AT PICK UP WINDOW
- HEIGHT DETECTOR
- INSTALL PREVIEW BOARD
- INSTALL ORDER BOARD AND WEATHER PROTECTION CANOPY
- CONSTRUCT MASONRY BLOCK TRASH ENCLOSURE; SEE DETAIL 1/SD2.0
- SITE DRIVE-THRU SIGN UNDER SEPARATE COVER
- SITE THANK YOU DO NOT ENTER SIGN UNDER SEPARATE COVER.
- PROPOSED GAS METER LOCATION, CONTRACTOR TO COORDINATE WITH THE APPROPRIATE UTILITY PROVIDER, BOLLARDS INSTALLED PER PROVIDER STANDARDS.
- INSTALL ACCESSIBLE PARKING SIGN WITH VAN PLACARD.
- PROPOSED SWITCH GEAR LOCATION, CONTRACTOR TO COORDINATE WITH THE APPROPRIATE UTILITY PROVIDER.
- APPLY INTERNATIONAL SYMBOL OF ACCESSIBILITY DECAL ON DOOR.
- NOT USED.
- PAINT ACCESSIBLE PARKING SYMBOLS, TEXT, AND DIAGONALS
- PAINT TRAFFIC DIRECTIONAL ARROWS, SOLID WHITE AND TYPICAL AS SHOWN.
- EXISTING TRANSFORMER LOCATION.
- PROPOSED GREASE INTERCEPTOR, CONTRACTOR TO COORDINATE WITH THE APPROPRIATE UTILITY PROVIDER.
- EXISTING WATER METER LOCATION.
- MONUMENT SIGN PROPOSED.

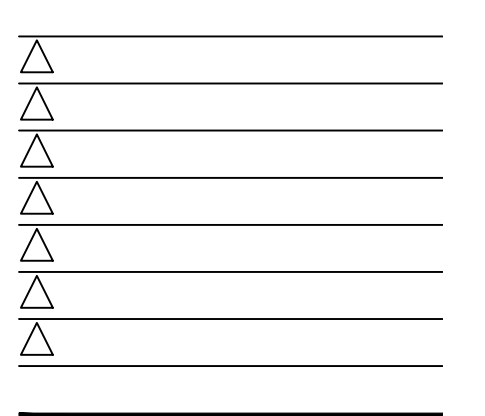
architecture  
 interior design  
 retail  
 restaurants  
 space planning  
 master planning  
 leed accredited  
 casp

2643 fourth ave.  
 san diego ca 92103  
 619-702-9448



©marks architects 2023  
 ALL REPORTS, PLANS AND DOCUMENTS PREPARED BY MARKS ARCHITECTS SHALL REMAIN THE PROPERTY OF MARKS ARCHITECTS AND IS INTENDED FOR USE FOR THIS SPECIFIC PROJECT ONLY.

SITE PLAN REVIEW 06.21.23



MK TYPE: 11AR\_SM  
 JIB #: J5502  
 ADDRESS: 17625 CENTRAL AVE. CARSON, CA. 90746

Jack  
 in the box  
 GROUND UP  
 SCALE: 1'-10"

**SITE PLAN**

**SD1.0**

**PARKING REQUIREMENTS**  
 PARKING RATIO FOR CITY OF CARSON FOLLOWS:

COMERCIAL:  
 1 SPACE PER 100 S.F. OF GROSS FLOOR AREA = 1,885 S.F. / 100  
 TOTAL PARKING REQUIRED: 18.85 SPACES  
 ACCESSIBLE PARKING REQUIRED: 1 SPACE  
 EV CAPABLE PARKING SPACES REQUIRED: 4 SPACE

ACCESSIBLE PARKING PROVIDED: 1 SPACES  
 EV CAPABLE PARKING PROVIDED: 4 SPACES  
 STANDARD PARKING SPACES PROVIDED: 14 SPACES  
 TOTAL PARKING PROVIDED: 19 SPACES