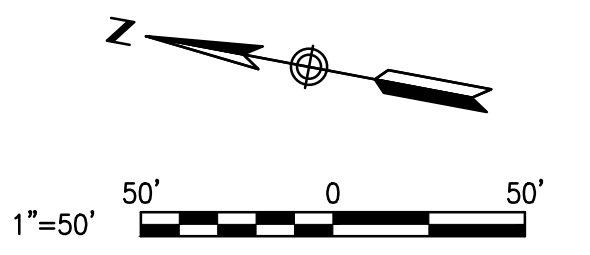
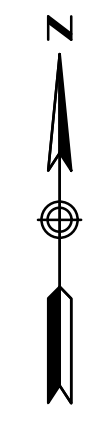


VICINITY MAP  
NOT TO SCALE



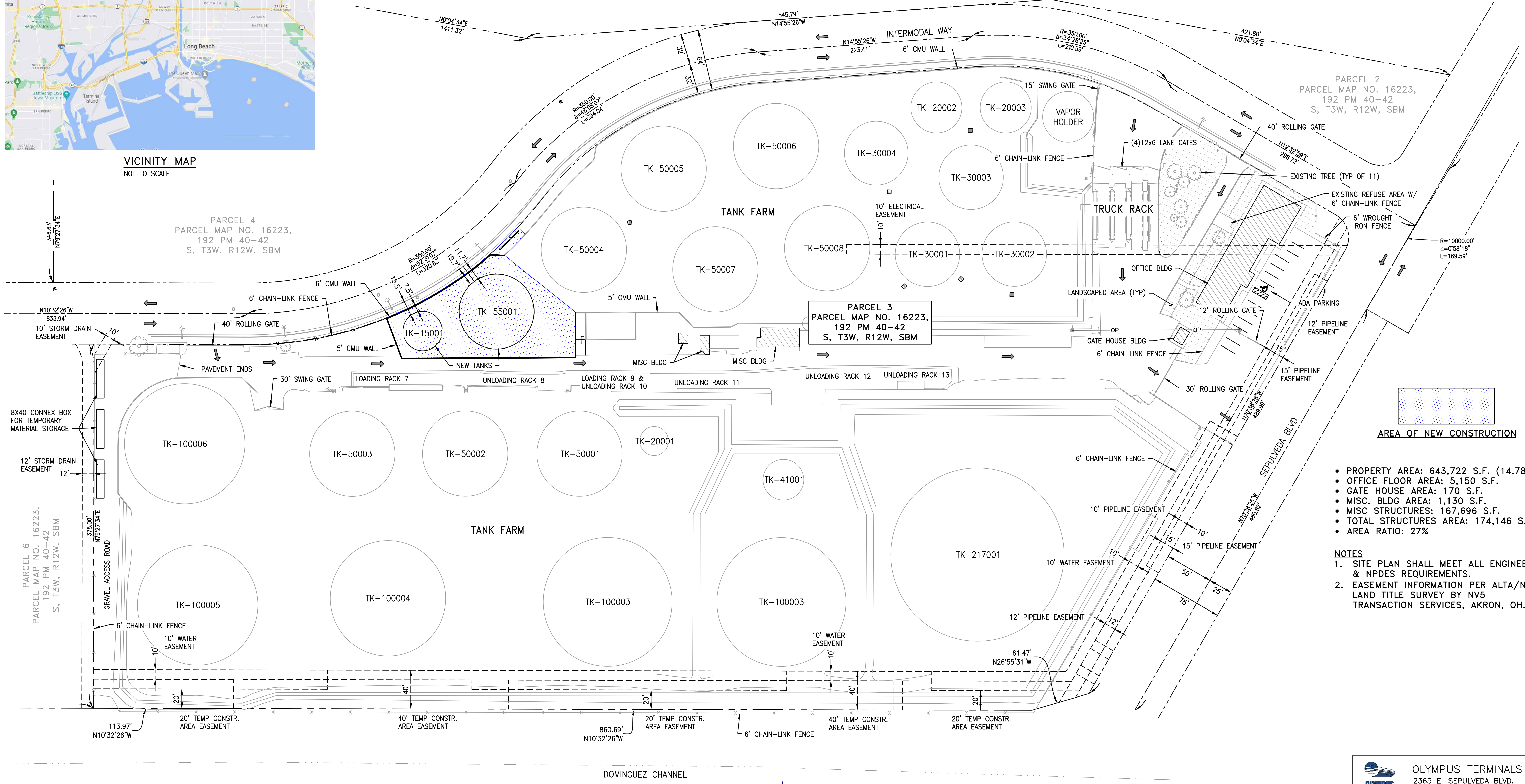
PARCEL 1  
PARCEL MAP NO. 16223,  
192 PM 40-42  
S, T3W, R12W, SBM

PARCEL 2  
PARCEL MAP NO. 16223,  
192 PM 40-42  
S, T3W, R12W, SBM

PARCEL 4  
PARCEL MAP NO. 16223,  
192 PM 40-42  
S, T3W, R12W, SBM

PARCEL 3  
PARCEL MAP NO. 16223,  
192 PM 40-42  
S, T3W, R12W, SBM

PARCEL 6  
PARCEL MAP NO. 16223,  
192 PM 40-42  
S, T3W, R12W, SBM



AREA OF NEW CONSTRUCTION

- PROPERTY AREA: 643,722 S.F. (14.78 AC)
- OFFICE FLOOR AREA: 5,150 S.F.
- GATE HOUSE AREA: 170 S.F.
- MISC. BLDG AREA: 1,130 S.F.
- MISC STRUCTURES: 167,696 S.F.
- TOTAL STRUCTURES AREA: 174,146 S.F.
- AREA RATIO: 27%

- NOTES
1. SITE PLAN SHALL MEET ALL ENGINEERING & NPDES REQUIREMENTS.
  2. EASEMENT INFORMATION PER ALTA/NSPS LAND TITLE SURVEY BY NV5 TRANSACTION SERVICES, AKRON, OH.



**NORWEST ENGINEERING, INC.**  
CONSULTING ENGINEERS  
PORTLAND, OREGON 503-254-0110  
IRVINE, CALIFORNIA  
www.NorwestEngineering.com

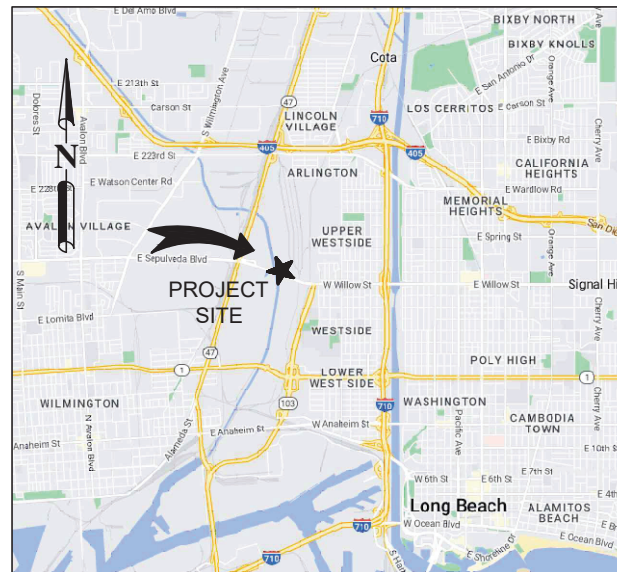
N.E. #	RV1394
Date	09/20/23
Rev.	0
Description	ISSUED FOR INFORMATION

**OLYMPUS TERMINALS LLC.**  
2365 E. SEPULVEDA BLVD.  
CARSON, CALIFORNIA

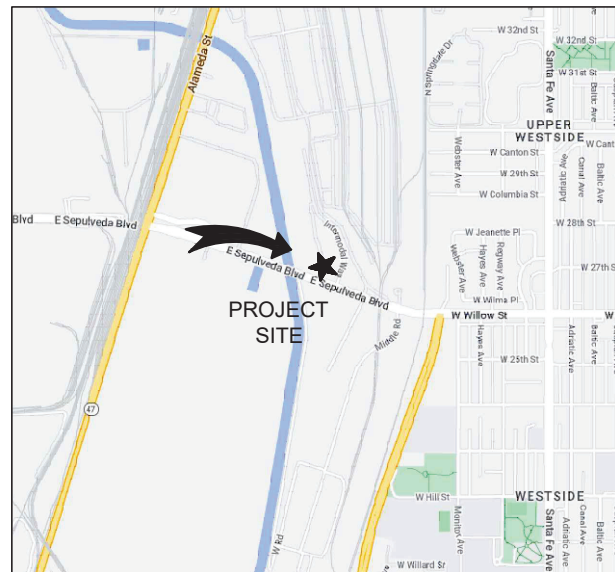
**OLYMPUS TERMINALS TRUCK RACK AND TANK EXPANSION PROJECT PLOT PLAN**

Drawn	TRM	Scale	AS SHOWN	Checked	TRF	Approved	BCK
Date	09/19/23	Project Number	RV1394	Drawing Number	D1394-G001	Rev	0

**VICINITY MAP**



**SITE MAP**



**OLYMPUS TERMINALS  
TANK 15001  
NOMINAL 15,000 BBL WELDED STEEL TANK  
CARSON, CA  
Ø41'-0" X 64'-0" HIGH  
CONE ROOF TANK**

**PROJECT LOCATION:** 2365 E SEPULVEDA BLVD  
LONG BEACH, CA 90810

**TANK INFORMATION:**

- Ø41'-0" INSIDE DIA X 64'-0" NOMINAL HEIGHT
- DESIGN LIQUID LEVEL: 64'-0"
- NOMINAL CAPACITY: 15,000 BBL

**DESIGN CODES & STANDARDS:**

- API 650 – 13TH EDITION
- OWNER'S SPECIFICATIONS

**GENERAL NOTES:**

- PIPE COATING & LINING SHALL BE PER OWNER'S SPECIFICATIONS.
- PIPE FLANGES SHALL BE PER ASTM A105/ASME B16.5 RAISED FACE CLASS 150, UNLESS OTHERWISE SPECIFIED.
- FLANGE BOLT HOLE TO STRADDLE FLANGE VERTICAL CENTERLINE, UNLESS OTHERWISE SPECIFIED.
- THE OWNER'S CONTRACT DRAWINGS PROVIDED THE PIPE SIZES. PRT HAS NOT CHECKED THE SIZES FOR HYDRAULICS AND IS PROVIDING THE SIZES AS SHOWN IN THE CONTRACT DRAWINGS.

**MATERIALS:**

- STEEL PLATES TO ASTM STANDARD A36 & A573-70.
- STRUCTURAL SHAPES TO ASTM STANDARD A36 & A992.
- PIPING TO ASTM STANDARD A106-B & A53-B.
- GUARDRAIL TO ASTM STANDARD A53-B.

**DESIGN CRITERIA:**

- INTERNAL PRESSURE 0.00 OZ/IN<sup>2</sup>
- INTERNAL VACUUM 0.00 OZ/IN<sup>2</sup>
- DESIGN TEMPERATURE 200 °F
- DESIGN METAL TEMPERATURE (DMT) 50 °F
- ROOF DEAD LOAD 10.21 PSF
- ROOF LIVE LOAD 20.00 PSF
- DESIGN WIND VELOCITY 72 MPH

**SEISMIC:**

- S<sub>s</sub> 1.719g
- S<sub>1</sub> 0.652g
- SEISMIC USE GROUP I
- SITE CLASS D
- I<sub>E</sub> 1.00
- F<sub>a</sub> 1.000
- F<sub>v</sub> 1.700
- R<sub>wi</sub> 4.0
- R<sub>wc</sub> 2.0
- T<sub>L</sub> 8
- A<sub>vert</sub> 0.54g

- DESIGN SPECIFIC GRAVITY:1.00
- ROOF TYPE AND SLOPE: CONE ROOF WITH 1" IN 12" SLOPE

**CORROSION ALLOWANCE:**

- CA<sub>roof</sub> 1/16"
- CA<sub>shell</sub> 1/16"
- CA<sub>bottom</sub> 1/16"

**INDEX OF DRAWINGS:**

1. COVER SHEET
2. STANDARD ABBREVIATIONS
3. GENERAL WELDING INFORMATION
4. FOUNDATION SHOT RECORD
5. ORIENTATION
6. FOUNDATION
7. ANCHOR CHAIR DETAILS
8. TANK ELEVATION

THIS DOCUMENT IS THE PROPERTY OF PASO ROBLES TANK, INC. ("PRT"). IT MAY CONTAIN INFORMATION DESCRIBING TECHNOLOGY AND INTELLECTUAL PROPERTY OWNED BY PRT AND DEEMED COMMERCIALY SENSITIVE. IT IS TO BE USED ONLY IN CONNECTION WITH WORK PERFORMED BY PRT. REPRODUCTION IN WHOLE OR IN PART FOR ANY PURPOSE OTHER THAN WORK PERFORMED BY PRT IS EXPRESSLY FORBIDDEN EXCEPT BY PRIOR WRITTEN AUTHORIZATION OF PRT. ANY PERSON OR ENTITY THAT IS GRANTED ACCESS TO THIS DOCUMENT BEARS LEGAL RESPONSIBILITY TO SAFEGUARD IT AGAINST BOTH DELIBERATE AND INADVERTENT DISCLOSURE TO ANY THIRD PARTY.

Copyright PRT, Inc. 2023



REV	DATE	BY	REMARKS

DESIGNED BY: _____	LJA
DRAWN BY: _____	JMC
SHEET CHK'D BY: _____	MJF
SHEET CHK'D BY: _____	-
APPROVED BY: _____	-
DATE: _____	-



**PASO ROBLES TANK, INC.**  
825 26th Street, Paso Robles, CA 93446  
Ph: (805) 227-1641 • Fax: (805) 238-9654  
3883 Wentworth Drive, Hemet, CA 92545  
Ph: (951) 925-5022 • Fax: (951) 925-6822

**OLYMPUS TERMINALS  
TANK 15001  
NOMINAL 15,000 BBL WELDED STEEL TANK  
CARSON, CA**

<b>COVER SHEET</b>			
TYPE: API 650	MATL: -	JOB: 41413-CF-02A	OF: 8

SHEET No.  
**1**

## STANDARD ABBREVIATIONS

ALUM	ALUMINUM	NO	NUMBER
BC	BOLT CIRCLE	NOM	NOMINAL PIPE SIZE
BNG	BOLT, NUT & GASKET KIT	NS	NEAR SIDE
BOE	BEVEL ONE END	OD	OUTSIDE DIAMETER
BW	BUTT WELD	PL	PLATE
C	CHANNEL	PSF	POUNDS PER SQUARE FOOT
C/C	CENTER TO CENTER	PSI	POUNDS PER SQUARE INCH
CL	CENTER LINE	PT	DYE PENETRANT TEST
CON	CONCENTRIC	QTY	QUANTITY
CONC	CONCRETE	R	RADIUS
CS	CARBON STEEL	RAD	RADIUS
DIA	DIAMETER	RB	ROUND BAR
DWG	DRAWING	REQ'D	REQUIRED
ECC	ECCENTRIC	REV	REVISION
EL	EPOXY LINED	RF	RAISED FACE
ELEV	ELEVATION	RFSO	RAISED FACE SLIP ON
F	FAHRENHEIT	RFWN	RAISED FACE WELD NECK
FB	FLAT BAR	S	STANDARD BEAM
FF	FLAT FACE	SB	SQUARE BAR
FFSO	FLAT FACE SLIP ON	SCH	SCHEDULE
FFWN	FLAT FACE WELD NECK	SHT	SHEET
FRP	FIBERGLASS REINFORCED PLASTIC	SR	SHELL RING
FS	FAR SIDE	SS	STAINLESS STEEL
FT	FOOT	STD WT	STANDARD WEIGHT
GALV	GALVANIZED	T	THICKNESS
GA	GAGE OR GAUGE	TBD	TO BE DETERMINED
HDG	HOT DIP GALVANIZED	TBE	THREAD BOTH ENDS
HEX	STANDARD HEX	THK	THICK
HOR	HORIZONTAL	THRD	THREADED
ID	INSIDE DIAMETER	TOE	THREAD ONE END
IN	INCHES	TS	TUBE STEEL
L	ANGLE	TYP	TYPICAL
LLH	LONG LEG HORIZONTAL	VERT	VERTICAL
LLV	LONG LEG VERTICAL	WPG	WELD PROCEDURE GROUP
LBS	POUNDS	W	WIDE FLANGE
LR	LONG RADIUS	WPS	WELD PROCEDURE SPECIFICATION
KSI	KIPS PER SQUARE INCH	XH WT	EXTRA HEAVY WEIGHT
MATL	MATERIAL	XXH WT	DOUBLE EXTRA HEAVY WEIGHT
MIN	MINIMUM	>	GREATER THAN
MR	MID RAIL	>=	GREATER THAN OR EQUAL
MT	MAGNETIC PARTICLE TEST	<	LESS THAN
NDE	NON DESTRUCTIVE EXAMINATION	<=	LESS THAN OR EQUAL
NPT	NATIONAL PIPE THREAD	#	NUMBER OR POUND
		±	PLUS OR MINUS

## COATING ABBREVIATIONS

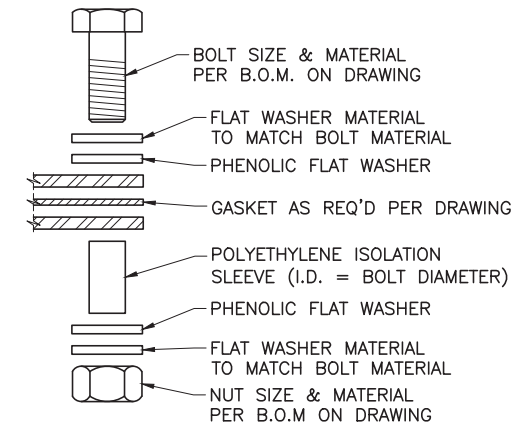
CML	CEMENT MORTAR LINED
FBEL	FUSION BOND EPOXY LINED
EL	EPOXY LINED**
OP	OUTSIDE PAINTED**
N/A	NOT APPLICABLE (NO APPLICATION REQ'D)

\*\*PAINT/COATING APPLICATION(S) TO BE IN COMPLIANCE WITH CUSTOMER SPECIFICATIONS OR WITH CUSTOMER APPROVED EQUAL.

## LEGEND

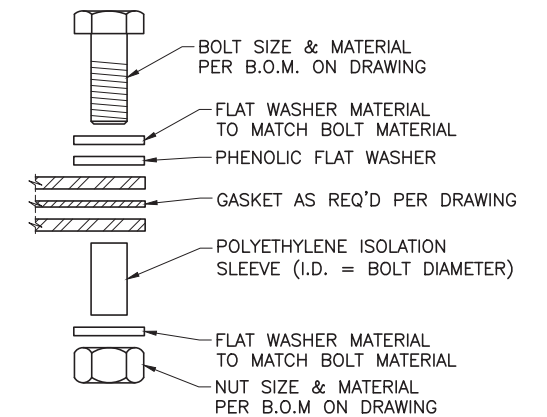
	APPURTENANCE MARK LISTING
	DRAWING SHEET NUMBER
	FINISHED GRADE
	CONCRETE
	SAND
	AGGREGATE BASE
	CENTERLINE
	HIDDEN LINE
	PHANTOM LINE (INDICATES WORK TO BE PROVIDED BY OTHERS)

	PIPE TO FLANGE WELD HOLDBACK DIMENSION		
	DIMENSION 'A'		
	NOMINAL PIPE Ø	STD WT PIPE	XH WT PIPE
	2"	5/16"	3/8"
	2 1/2"	3/8"	7/16"
	3"	3/8"	7/16"
	3 1/2"	3/8"	1/2"
	4"	3/8"	1/2"
	5"	7/16"	1/2"
	6"	7/16"	9/16"
	8" & ABOVE	1/2"	5/8"



**ISOLATION KIT - TYPE #1**

NTS



**ISOLATION KIT - TYPE #2**

NTS

THIS DOCUMENT IS THE PROPERTY OF PASO ROBLES TANK, INC. ("PRT"). IT MAY CONTAIN INFORMATION DESCRIBING TECHNOLOGY AND INTELLECTUAL PROPERTY OWNED BY PRT AND DEEMED COMMERCIALY SENSITIVE. IT IS TO BE USED ONLY IN CONNECTION WITH WORK PERFORMED BY PRT. REPRODUCTION IN WHOLE OR IN PART FOR ANY PURPOSE OTHER THAN WORK PERFORMED BY PRT IS EXPRESSLY FORBIDDEN EXCEPT BY PRIOR WRITTEN AUTHORIZATION OF PRT. ANY PERSON OR ENTITY THAT IS GRANTED ACCESS TO THIS DOCUMENT BEARS LEGAL RESPONSIBILITY TO SAFEGUARD IT AGAINST BOTH DELIBERATE AND INADVERTENT DISCLOSURE TO ANY THIRD PARTY.

Copyright PRT, Inc. 2023

REV	DATE	BY	REMARKS

DESIGNED BY: _____	LJA
DRAWN BY: _____	JMC
SHEET CHK'D BY: _____	MJF
SHEET CHK'D BY: _____	-
APPROVED BY: _____	-
DATE: _____	-



**PASO ROBLES TANK, INC.**  
 825 26th Street, Paso Robles, CA 93446  
 Ph: (805) 227-1641 • Fax: (805) 238-9654  
 3883 Wentworth Drive, Hemet, CA 92545  
 Ph: (951) 925-5022 • Fax: (951) 925-6822

**OLYMPUS TERMINALS  
 TANK 15001  
 NOMINAL 15,000 BBL WELDED STEEL TANK  
 CARSON, CA**

TYPE: API 650

MATL: -

JOB: 41413-CF-02A

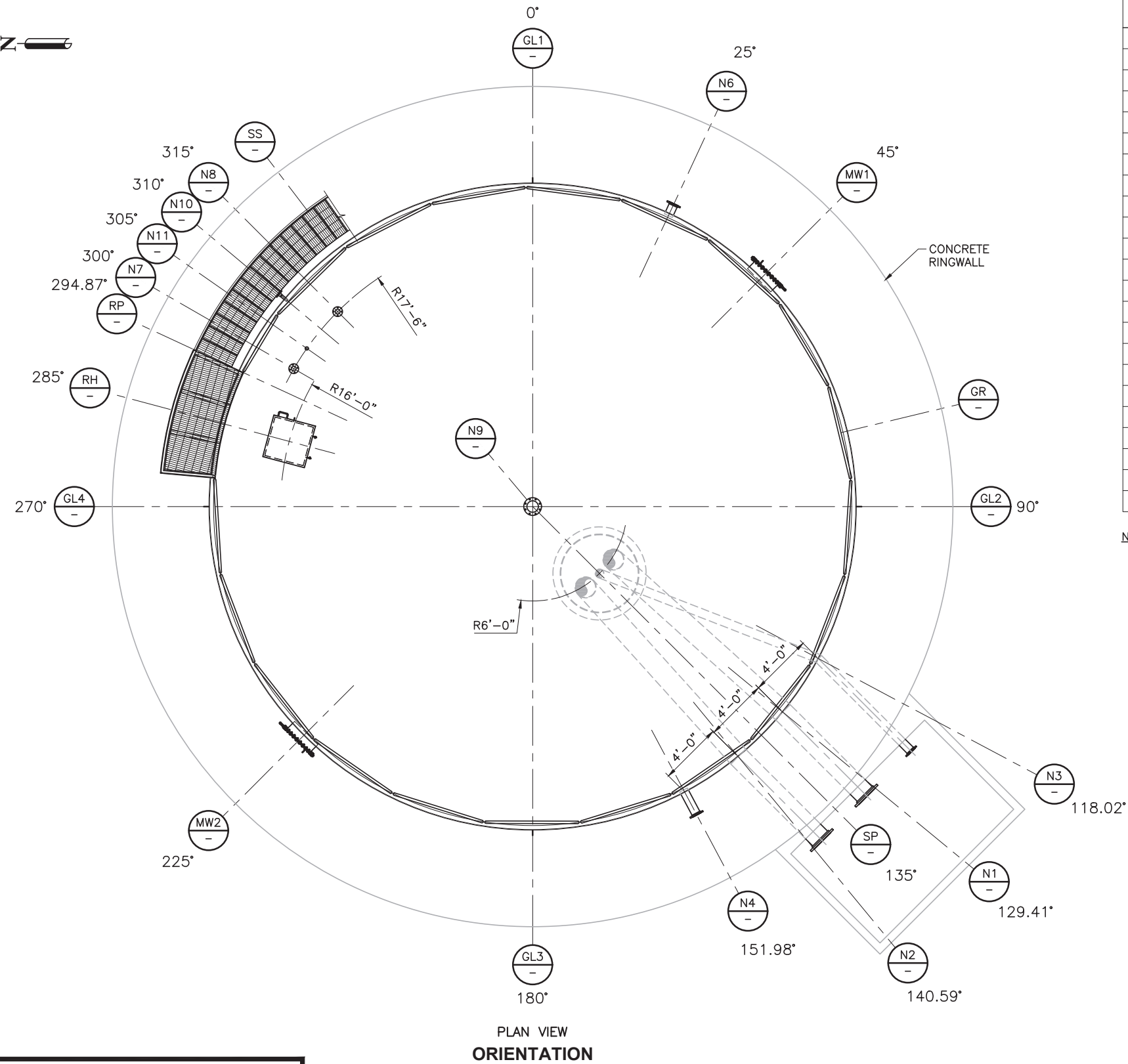
OF: 8

**STANDARD ABBREVIATIONS**

SHEET No.

**2**





### APPURTENANCE SCHEDULE

MK	SIZE	QTY	RAT'G	PROJ	ELEV	ORIENTATION			DESCRIPTION
						DEG	DIMENSION	FROM	
MW1	ø24"	1	API	6"	2'-6"	45°	16'-1 5/8"	+0	MULTI-BOLT SHELL MANWAY
MW2	ø24"	1	API	6"	2'-6"	225°	16'-1 5/8"	+180	MULTI-BOLT SHELL MANWAY
N1	ø16"	1	150#	-	FLOOR	129.41°	14'-1 9/16"	+90	SUCTION
N2	ø16"	1	150#	-	FLOOR	140.59°	18'-1 5/8"	+90	INLET
N3	ø6"	1	150#	-	FLOOR	118.02°	10'-0 9/16"	+90	LOW SUCTION
N4	ø6"	1	150#	-	FLOOR	151.98°	22'-2 5/8"	+90	SPARE
N6	ø6"	1	150#	1'-0"	63'-6"	25°	8'-11 9/16"	+0	FIRE FOAM CONNECTION
N7	ø3"	1	150#	1'-0"	ROOF	300°	10'-9 1/16"	+270	INSTRUMENTATION
N8	ø3"	1	150#	1'-0"	ROOF	315°	16'-1 5/8"	+270	INSTRUMENTATION
N9	ø8"	1	150#	1'-0"	ROOF	-	CENTER	-	VENT
N10	ø1 1/2"	1	300#	6"	2'-0"	310°	14'-4 1/16"	+270	THERMOWELL CONNECTION
N11	ø1 1/2"	1	3000#	-	ROOF	305°	12'-6 9/16"	+270	TAPE CARRIER
GL1	2 1/2" X 4"	1	API	-	1'-0"	0°	0"	+0	GROUNDING LUG 1
GL2	2 1/2" X 4"	1	API	-	1'-0"	90°	0"	+90	GROUNDING LUG 2
GL3	2 1/2" X 4"	1	API	-	1'-0"	180°	0"	+180	GROUNDING LUG 3
GL4	2 1/2" X 4"	1	API	-	1'-0"	270°	0"	+270	GROUNDING LUG 4
GR	ø1 1/2"	1	OSHA	3'-6"	ROOF	-	AS SHOWN	-	ROOF GUARDRAIL
RH	30" SQ	1	API	6"	ROOF	285°	5'-4 9/16"	+270	ROOF HATCH
RP	3'-6" X 8'-2"	1	OSHA	-	64'-4 1/4"	294.87°	8'-11"	+270	ROOF PLATFORM
SP	ø60"	1	API	-	FLOOR	135°	16'-1 5/8"	+90	SUMP
SS	30" WIDE	1	OSHA	6"	SHELL	-	AS SHOWN	-	STAIRWAY

**NOTES:**

1. ORIENTATION IN FEET AND INCHES ARE MEASURED CLOCKWISE ALONG THE OUTSIDE FACE OF THE TANKS FIRST SHELL RING TO THE CENTERLINE OF THE APPURTENANCE.
2. APPURTENANCE LOCATIONS SHALL BE FIELD VERIFIED BY OWNER, PRIOR TO INSTALLATION.
3. ALL ELEVATIONS ARE MEASURED FROM THE TOP OF THE TANK FLOOR AND AT THE OUTSIDE FACE OF THE SHELL.
4. FOR REFERENCE, TANK IS ø41'-0" I.D.
5. FOR REFERENCE, 1' OF TANK CIRCUMFERENCE = 4 5/16"
6. FOR REFERENCE, TOTAL STRAPPING CIRCUMFERENCE AROUND BOTTOM RING = 129'-0 13/16"

LOCATIONS & ELEVATIONS VERIFIED BY:

NAME (PRINT)

COMPANY

SIGN

DATE



THIS DOCUMENT IS THE PROPERTY OF PASO ROBLES TANK, INC. ("PRT"). IT MAY CONTAIN INFORMATION DESCRIBING TECHNOLOGY AND INTELLECTUAL PROPERTY OWNED BY PRT AND DEEMED COMMERCIALY SENSITIVE. IT IS TO BE USED ONLY IN CONNECTION WITH WORK PERFORMED BY PRT. REPRODUCTION IN WHOLE OR IN PART FOR ANY PURPOSE OTHER THAN WORK PERFORMED BY PRT IS EXPRESSLY FORBIDDEN EXCEPT BY PRIOR WRITTEN AUTHORIZATION OF PRT. ANY PERSON OR ENTITY THAT IS GRANTED ACCESS TO THIS DOCUMENT BEARS LEGAL RESPONSIBILITY TO SAFEGUARD IT AGAINST BOTH DELIBERATE AND INADVERTENT DISCLOSURE TO ANY THIRD PARTY.

Copyright PRT, Inc. 2023

REV	DATE	BY	REMARKS

DESIGNED BY: LJA  
 DRAWN BY: JMC  
 SHEET CHK'D BY: MJF  
 SHEET CHK'D BY: -  
 APPROVED BY: -  
 DATE: -



**PASO ROBLES TANK, INC.**  
 825 26th Street, Paso Robles, CA 93446  
 Ph: (805) 227-1641 • Fax: (805) 238-9654  
 3883 Wentworth Drive, Hemet, CA 92545  
 Ph: (951) 925-5022 • Fax: (951) 925-6822

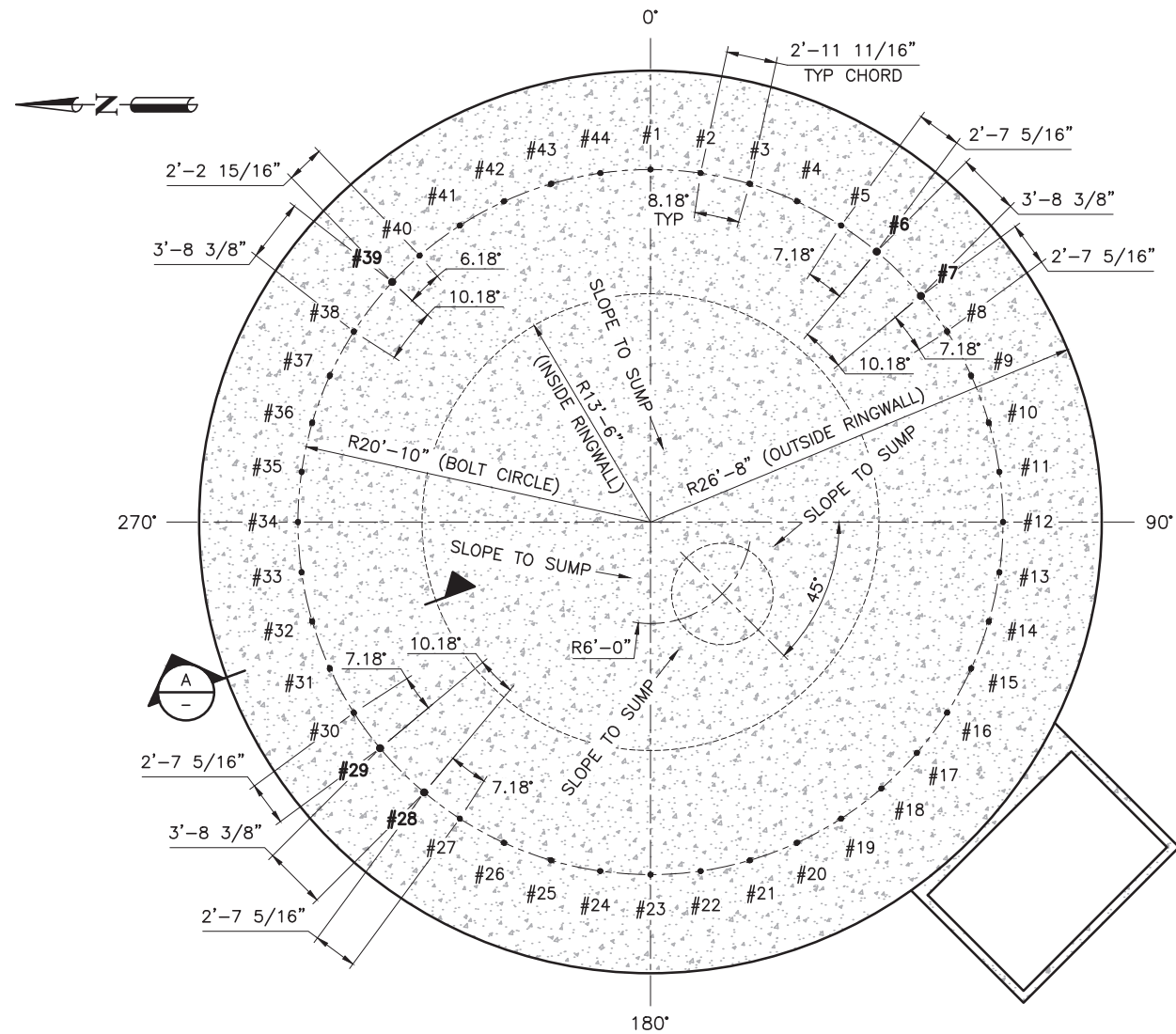
**OLYMPUS TERMINALS  
 TANK 15001  
 NOMINAL 15,000 BBL WELDED STEEL TANK  
 CARSON, CA**

TYPE: API 650      MATL: -      JOB: 41413-CF-02A      OF: 8

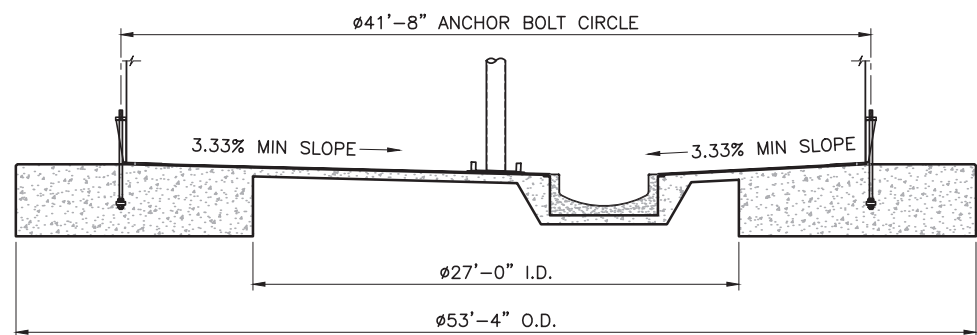
**ORIENTATION**

SHEET No.

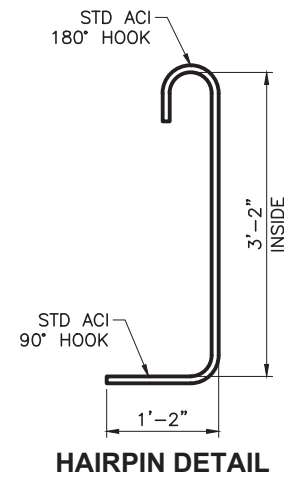
**5**



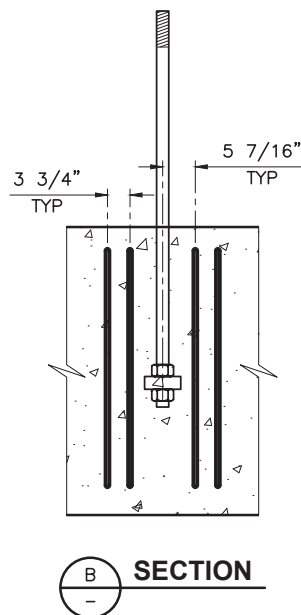
PLAN VIEW  
FOUNDATION



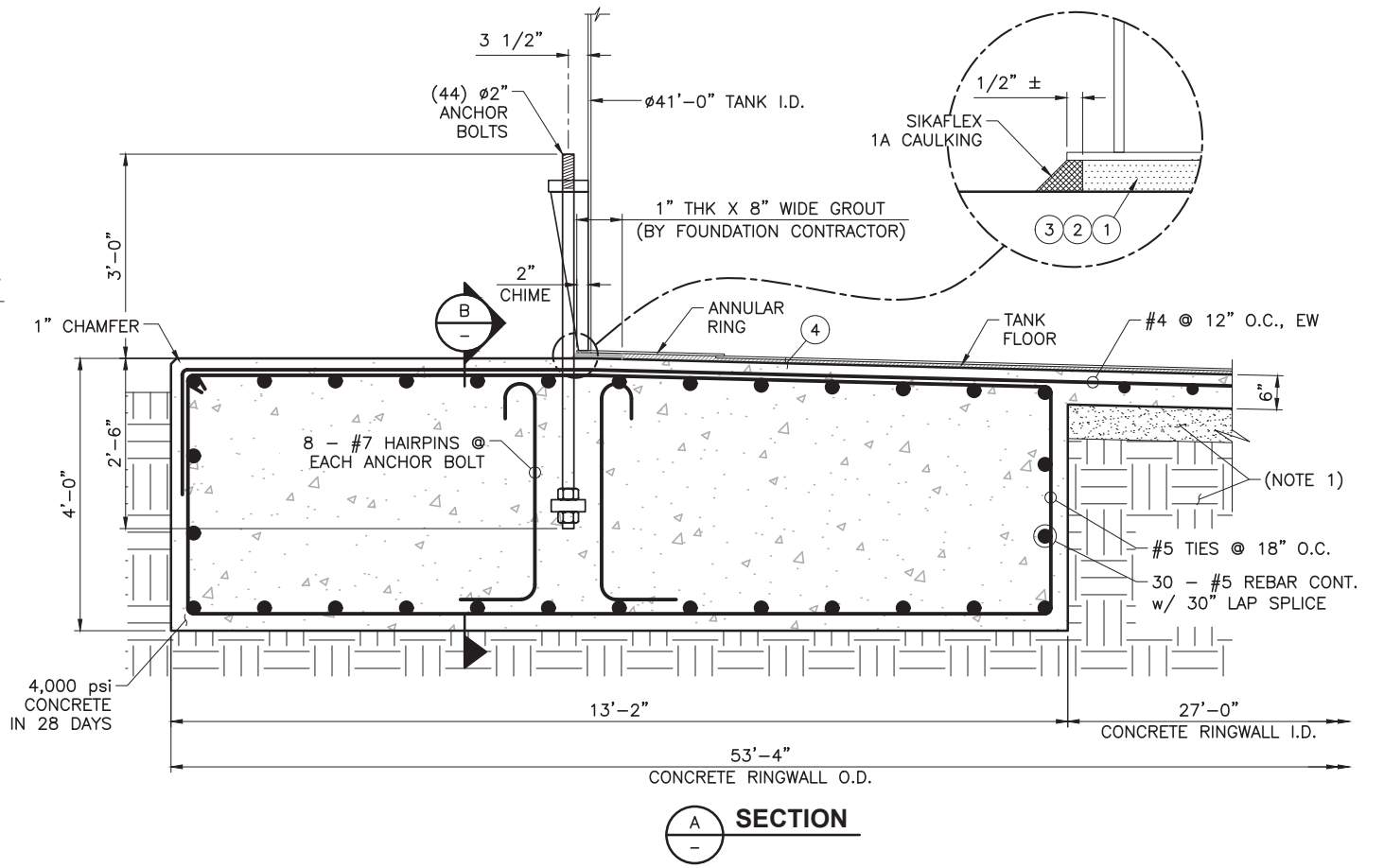
SECTION VIEW  
FOUNDATION



HAIRPIN DETAIL



SECTION  
B



SECTION  
A

**BILL OF MATERIALS**

ITEM#	QTY	DESCRIPTION	MATL	WT EA (LBS)	TOTAL WT (LBS)
1	22	FB, 1" THK X 2" X 6" LG	A36	11	237
2	44	FB, 1/4" THK X 2" X 6" LG (AS REQUIRED)	A36	3	119
3	44	FB, 1/8" THK X 2" X 6" LG (AS REQUIRED)	A36	1	59
4	32	FIBERBOARD, 1" THK X 4'-0" X 10'-0" (NOTE 6)	ASTM D1751	63	2,026
				TOTAL:	415

**NOTES:**

1. DRAWING IS FOR GENERAL CONFORMANCE ONLY. SEE OWNER'S DRAWING FOR SUBGRADE DETAILS.
2. FOUNDATION AND SUBGRADE TO BE PROVIDED BY OTHERS.
3. ANCHOR BOLTS TO BE PROVIDED BY OTHERS.
4. REINFORCING BARS SHALL BE PER ASTM A615, GRADE 60.
5. SHIM BARS TO BE SPACED APPROX 6'-0" O.C.
6. TWO (2) 1/2" THICK PIECES OF FIBERBOARD CAN BE SUBSTITUTED FOR THE 1" THICK PIECES.

THIS DOCUMENT IS THE PROPERTY OF PASO ROBLES TANK, INC. ("PRT"). IT MAY CONTAIN INFORMATION DESCRIBING TECHNOLOGY AND INTELLECTUAL PROPERTY OWNED BY PRT AND DEEMED COMMERCIAL SENSITIVE. IT IS TO BE USED ONLY IN CONNECTION WITH WORK PERFORMED BY PRT. REPRODUCTION IN WHOLE OR IN PART FOR ANY PURPOSE OTHER THAN WORK PERFORMED BY PRT IS EXPRESSLY FORBIDDEN EXCEPT BY PRIOR WRITTEN AUTHORIZATION OF PRT. ANY PERSON OR ENTITY THAT IS GRANTED ACCESS TO THIS DOCUMENT BEARS LEGAL RESPONSIBILITY TO SAFEGUARD IT AGAINST BOTH DELIBERATE AND INADVERTENT DISCLOSURE TO ANY THIRD PARTY.

Copyright PRT, Inc. 2023

REV	DATE	BY	REMARKS

DESIGNED BY: LJA  
 DRAWN BY: JMC  
 SHEET CHK'D BY: MJF  
 SHEET CHK'D BY: -  
 APPROVED BY: -  
 DATE: -



**PASO ROBLES TANK, INC.**  
 825 26th Street, Paso Robles, CA 93446  
 Ph: (805) 227-1641 • Fax: (805) 238-9654  
 3883 Wentworth Drive, Hemet, CA 92545  
 Ph: (951) 925-5022 • Fax: (951) 925-6822

**OLYMPUS TERMINALS  
 TANK 15001  
 NOMINAL 15,000 BBL WELDED STEEL TANK  
 CARSON, CA**

**FOUNDATION**

SHEET No.

**6**

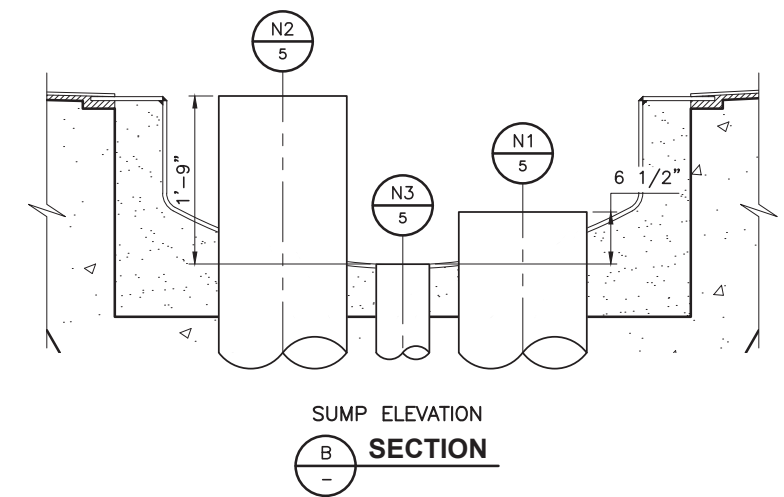
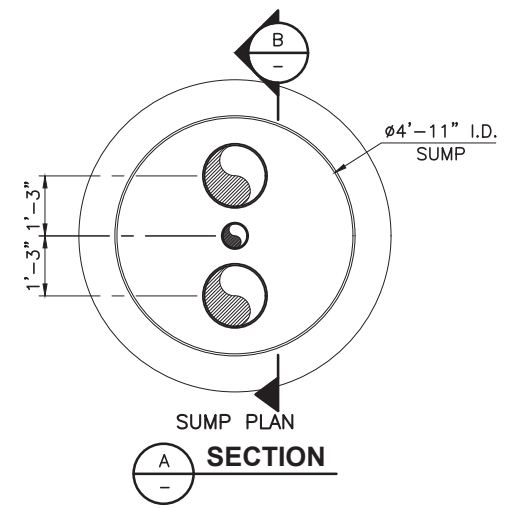
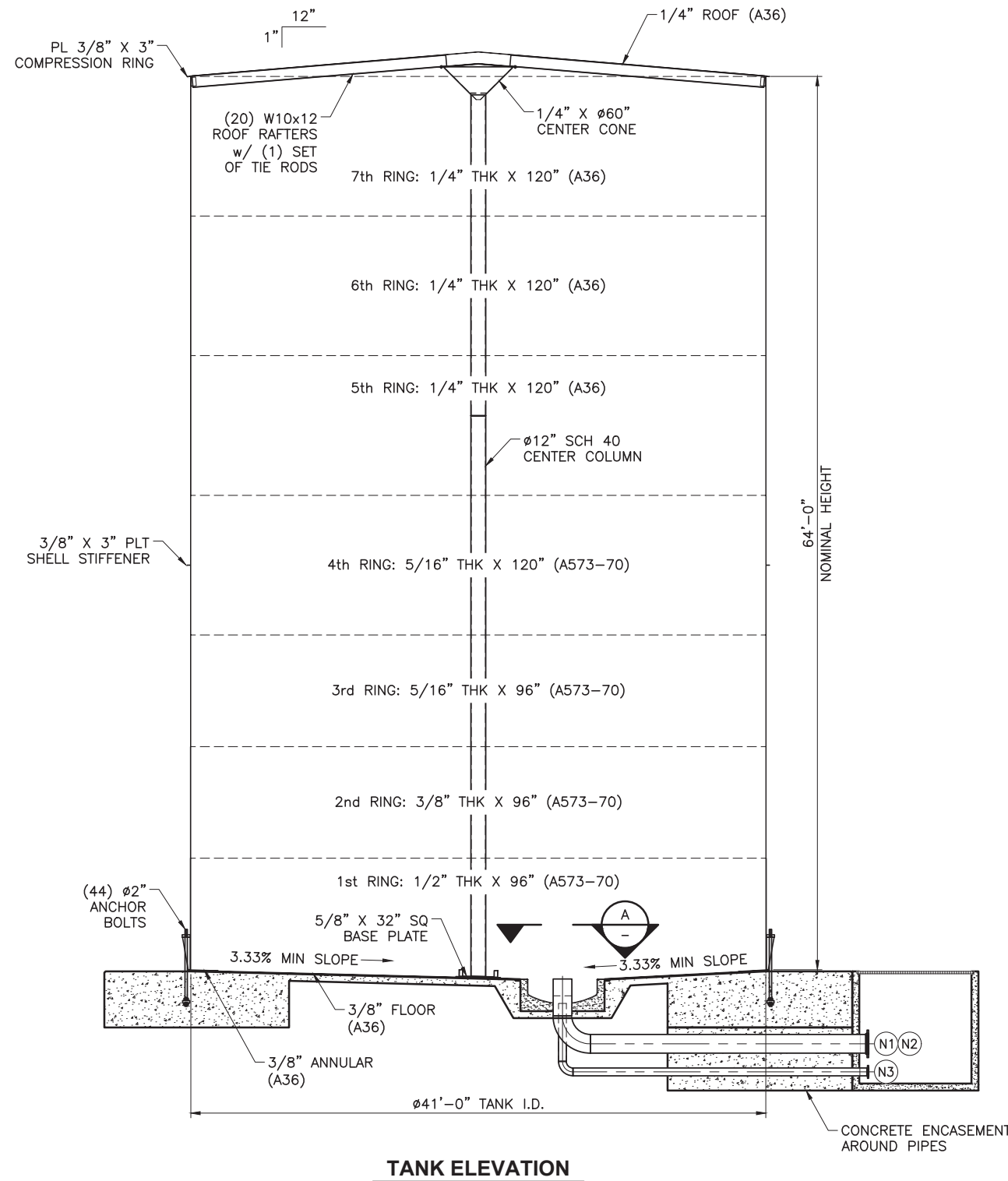
TYPE: API 650

MATL: -

JOB: 41413-CF-02A

OF: 8





THIS DOCUMENT IS THE PROPERTY OF PASO ROBLES TANK, INC. ("PRT"). IT MAY CONTAIN INFORMATION DESCRIBING TECHNOLOGY AND INTELLECTUAL PROPERTY OWNED BY PRT AND DEEMED COMMERCIALY SENSITIVE. IT IS TO BE USED ONLY IN CONNECTION WITH WORK PERFORMED BY PRT. REPRODUCTION IN WHOLE OR IN PART FOR ANY PURPOSE OTHER THAN WORK PERFORMED BY PRT IS EXPRESSLY FORBIDDEN EXCEPT BY PRIOR WRITTEN AUTHORIZATION OF PRT. ANY PERSON OR ENTITY THAT IS GRANTED ACCESS TO THIS DOCUMENT BEARS LEGAL RESPONSIBILITY TO SAFEGUARD IT AGAINST BOTH DELIBERATE AND INADVERTENT DISCLOSURE TO ANY THIRD PARTY.

Copyright PRT, Inc. 2023

REV	DATE	BY	REMARKS

DESIGNED BY: LJA  
 DRAWN BY: JMC  
 SHEET CHK'D BY: MJF  
 SHEET CHK'D BY: -  
 APPROVED BY: -  
 DATE: -

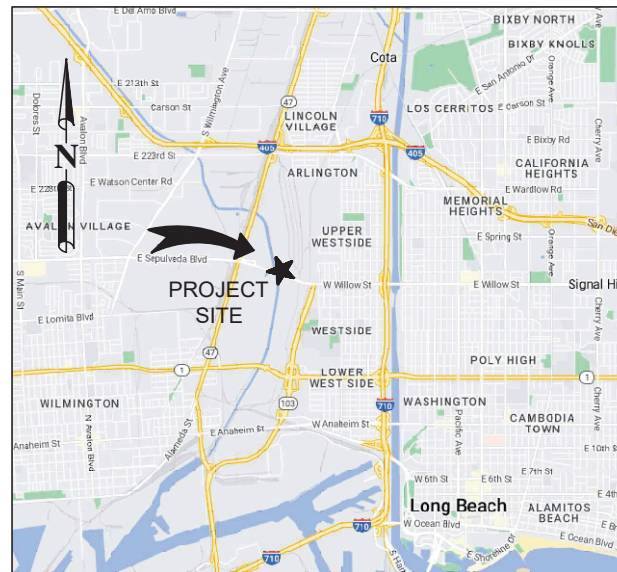


**PASO ROBLES TANK, INC.**  
 825 26th Street, Paso Robles, CA 93446  
 Ph: (805) 227-1641 • Fax: (805) 238-9654  
 3883 Wentworth Drive, Hemet, CA 92545  
 Ph: (951) 925-5022 • Fax: (951) 925-6822

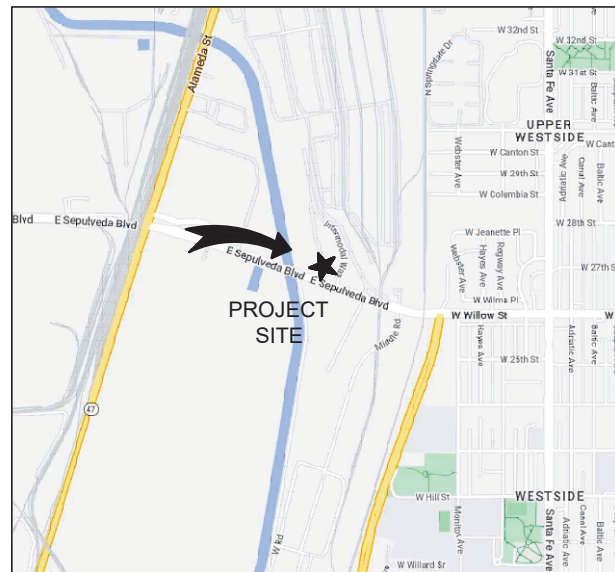
**OLYMPUS TERMINALS  
 TANK 15001  
 NOMINAL 15,000 BBL WELDED STEEL TANK  
 CARSON, CA**

<b>TANK ELEVATION</b>		SHEET No. <b>8</b>
TYPE: API 650	MATL: -	JOB: 41413-CF-02A OF: 8

**VICINITY MAP**



**SITE MAP**



**OLYMPUS TERMINALS  
TANK 55001  
NOMINAL 54,000 BBL WELDED STEEL TANK  
CARSON, CA  
Ø78'-0" X 64'-0" HIGH  
CONE ROOF TANK**

**PROJECT LOCATION:** 2365 E SEPULVEDA BLVD  
LONG BEACH, CA 90810

**TANK INFORMATION:**

- Ø78'-0" INSIDE DIA X 64'-0" NOMINAL HEIGHT
- DESIGN LIQUID LEVEL: 64'-0"
- NOMINAL CAPACITY: 54,000 BBL

**DESIGN CODES & STANDARDS:**

- API 650 – 13TH EDITION
- OWNER'S SPECIFICATIONS

**GENERAL NOTES:**

- PIPE COATING & LINING SHALL BE PER OWNER'S SPECIFICATIONS.
- PIPE FLANGES SHALL BE PER ASTM A105/ASME B16.5 RAISED FACE CLASS 150, UNLESS OTHERWISE SPECIFIED.
- FLANGE BOLT HOLE TO STRADDLE FLANGE VERTICAL CENTERLINE, UNLESS OTHERWISE SPECIFIED.
- THE OWNER'S CONTRACT DRAWINGS PROVIDED THE PIPE SIZES. PRT HAS NOT CHECKED THE SIZES FOR HYDRAULICS AND IS PROVIDING THE SIZES AS SHOWN IN THE CONTRACT DRAWINGS.

**MATERIALS:**

- STEEL PLATES TO ASTM STANDARD A36 & A573-70.
- STRUCTURAL SHAPES TO ASTM STANDARD A36 & A992.
- PIPING TO ASTM STANDARD A106-B & A53-B.
- GUARDRAIL TO ASTM STANDARD A53-B.

**DESIGN CRITERIA:**

- INTERNAL PRESSURE 0.00 OZ/IN<sup>2</sup>
- INTERNAL VACUUM 0.00 OZ/IN<sup>2</sup>
- DESIGN TEMPERATURE 200 °F
- DESIGN METAL TEMPERATURE (DMT) 50 °F
- ROOF DEAD LOAD 10.21 PSF
- ROOF LIVE LOAD 20.00 PSF
- DESIGN WIND VELOCITY 72 MPH

**SEISMIC:**

- S<sub>s</sub> 1.719g
- S<sub>1</sub> 0.652g
- SEISMIC USE GROUP I
- SITE CLASS D
- I<sub>E</sub> 1.00
- F<sub>a</sub> 1.000
- F<sub>v</sub> 1.700
- R<sub>wi</sub> 4.0
- R<sub>wc</sub> 2.0
- T<sub>L</sub> 8
- A<sub>vert</sub> 0.54g

- DESIGN SPECIFIC GRAVITY:1.00
- ROOF TYPE AND SLOPE: CONE ROOF WITH 1" IN 12" SLOPE

**CORROSION ALLOWANCE:**

- CA<sub>roof</sub> 1/16"
- CA<sub>shell</sub> 1/16"
- CA<sub>bottom</sub> 1/16"

**INDEX OF DRAWINGS:**

1. COVER SHEET
2. STANDARD ABBREVIATIONS
3. GENERAL WELDING INFORMATION
4. FOUNDATION SHOT RECORD
5. ORIENTATION
6. FOUNDATION
7. ANCHOR CHAIR DETAILS
8. TANK ELEVATION

THIS DOCUMENT IS THE PROPERTY OF PASO ROBLES TANK, INC. ("PRT"). IT MAY CONTAIN INFORMATION DESCRIBING TECHNOLOGY AND INTELLECTUAL PROPERTY OWNED BY PRT AND DEEMED COMMERCIALY SENSITIVE. IT IS TO BE USED ONLY IN CONNECTION WITH WORK PERFORMED BY PRT. REPRODUCTION IN WHOLE OR IN PART FOR ANY PURPOSE OTHER THAN WORK PERFORMED BY PRT IS EXPRESSLY FORBIDDEN EXCEPT BY PRIOR WRITTEN AUTHORIZATION OF PRT. ANY PERSON OR ENTITY THAT IS GRANTED ACCESS TO THIS DOCUMENT BEARS LEGAL RESPONSIBILITY TO SAFEGUARD IT AGAINST BOTH DELIBERATE AND INADVERTENT DISCLOSURE TO ANY THIRD PARTY.

Copyright PRT, Inc. 2023



REV	DATE	BY	REMARKS

DESIGNED BY: _____	LJA
DRAWN BY: _____	JMC
SHEET CHK'D BY: _____	MJF
SHEET CHK'D BY: _____	-
APPROVED BY: _____	-
DATE: _____	-



**PASO ROBLES TANK, INC.**  
825 26th Street, Paso Robles, CA 93446  
Ph: (805) 227-1641 • Fax: (805) 238-9654  
3883 Wentworth Drive, Hemet, CA 92545  
Ph: (951) 925-5022 • Fax: (951) 925-6822

**OLYMPUS TERMINALS  
TANK 55001  
NOMINAL 54,000 BBL WELDED STEEL TANK  
CARSON, CA**

**COVER SHEET**

TYPE: API 650      MATL: -      JOB: 41413-CF-02B      OF: 8

SHEET No.  
**1**

## STANDARD ABBREVIATIONS

ALUM	ALUMINUM	NO	NUMBER
BC	BOLT CIRCLE	NOM	NOMINAL PIPE SIZE
BNG	BOLT, NUT & GASKET KIT	NS	NEAR SIDE
BOE	BEVEL ONE END	OD	OUTSIDE DIAMETER
BW	BUTT WELD	PL	PLATE
C	CHANNEL	PSF	POUNDS PER SQUARE FOOT
C/C	CENTER TO CENTER	PSI	POUNDS PER SQUARE INCH
CL	CENTER LINE	PT	DYE PENETRANT TEST
CON	CONCENTRIC	QTY	QUANTITY
CONC	CONCRETE	R	RADIUS
CS	CARBON STEEL	RAD	RADIUS
DIA	DIAMETER	RB	ROUND BAR
DWG	DRAWING	REQ'D	REQUIRED
ECC	ECCENTRIC	REV	REVISION
EL	EPOXY LINED	RF	RAISED FACE
ELEV	ELEVATION	RFSO	RAISED FACE SLIP ON
F	FAHRENHEIT	RFWN	RAISED FACE WELD NECK
FB	FLAT BAR	S	STANDARD BEAM
FF	FLAT FACE	SB	SQUARE BAR
FFSO	FLAT FACE SLIP ON	SCH	SCHEDULE
FFWN	FLAT FACE WELD NECK	SHT	SHEET
FRP	FIBERGLASS REINFORCED PLASTIC	SR	SHELL RING
FS	FAR SIDE	SS	STAINLESS STEEL
FT	FOOT	STD WT	STANDARD WEIGHT
GALV	GALVANIZED	T	THICKNESS
GA	GAGE OR GAUGE	TBD	TO BE DETERMINED
HDG	HOT DIP GALVANIZED	TBE	THREAD BOTH ENDS
HEX	STANDARD HEX	THK	THICK
HOR	HORIZONTAL	THRD	THREADED
ID	INSIDE DIAMETER	TOE	THREAD ONE END
IN	INCHES	TS	TUBE STEEL
L	ANGLE	TYP	TYPICAL
LLH	LONG LEG HORIZONTAL	VERT	VERTICAL
LLV	LONG LEG VERTICAL	WPG	WELD PROCEDURE GROUP
LBS	POUNDS	W	WIDE FLANGE
LR	LONG RADIUS	WPS	WELD PROCEDURE SPECIFICATION
KSI	KIPS PER SQUARE INCH	XH WT	EXTRA HEAVY WEIGHT
MATL	MATERIAL	XXH WT	DOUBLE EXTRA HEAVY WEIGHT
MIN	MINIMUM	>	GREATER THAN
MR	MID RAIL	>=	GREATER THAN OR EQUAL
MT	MAGNETIC PARTICLE TEST	<	LESS THAN
NDE	NON DESTRUCTIVE EXAMINATION	<=	LESS THAN OR EQUAL
NPT	NATIONAL PIPE THREAD	#	NUMBER OR POUND
		±	PLUS OR MINUS

## COATING ABBREVIATIONS

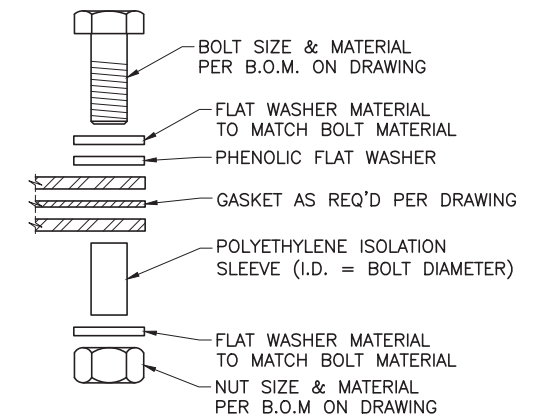
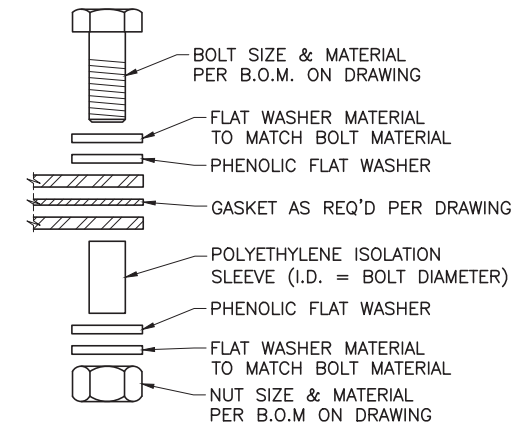
CML	CEMENT MORTAR LINED
FBEL	FUSION BOND EPOXY LINED
EL	EPOXY LINED**
OP	OUTSIDE PAINTED**
N/A	NOT APPLICABLE (NO APPLICATION REQ'D)

\*\*PAINT/COATING APPLICATION(S) TO BE IN COMPLIANCE WITH CUSTOMER SPECIFICATIONS OR WITH CUSTOMER APPROVED EQUAL.

## LEGEND

	APPURTENANCE MARK LISTING
	DRAWING SHEET NUMBER
	FINISHED GRADE
	CONCRETE
	SAND
	AGGREGATE BASE
	CENTERLINE
	HIDDEN LINE
	PHANTOM LINE (INDICATES WORK TO BE PROVIDED BY OTHERS)

	PIPE TO FLANGE WELD HOLDBACK DIMENSION		
	DIMENSION 'A'		
	NOMINAL PIPE Ø	STD WT PIPE	XH WT PIPE
	2"	5/16"	3/8"
	2 1/2"	3/8"	7/16"
	3"	3/8"	7/16"
	3 1/2"	3/8"	1/2"
	4"	3/8"	1/2"
	5"	7/16"	1/2"
	6"	7/16"	9/16"
	8" & ABOVE	1/2"	5/8"



THIS DOCUMENT IS THE PROPERTY OF PASO ROBLES TANK, INC. ("PRT"). IT MAY CONTAIN INFORMATION DESCRIBING TECHNOLOGY AND INTELLECTUAL PROPERTY OWNED BY PRT AND DEEMED COMMERCIAL SENSITIVE. IT IS TO BE USED ONLY IN CONNECTION WITH WORK PERFORMED BY PRT. REPRODUCTION IN WHOLE OR IN PART FOR ANY PURPOSE OTHER THAN WORK PERFORMED BY PRT IS EXPRESSLY FORBIDDEN EXCEPT BY PRIOR WRITTEN AUTHORIZATION OF PRT. ANY PERSON OR ENTITY THAT IS GRANTED ACCESS TO THIS DOCUMENT BEARS LEGAL RESPONSIBILITY TO SAFEGUARD IT AGAINST BOTH DELIBERATE AND INADVERTENT DISCLOSURE TO ANY THIRD PARTY.

Copyright PRT, Inc. 2023

REV	DATE	BY	REMARKS

DESIGNED BY: _____	LJA
DRAWN BY: _____	JMC
SHEET CHK'D BY: _____	MJF
SHEET CHK'D BY: _____	-
APPROVED BY: _____	-
DATE: _____	-



**PASO ROBLES TANK, INC.**  
825 26th Street, Paso Robles, CA 93446  
Ph: (805) 227-1641 • Fax: (805) 238-9654  
3883 Wentworth Drive, Hemet, CA 92545  
Ph: (951) 925-5022 • Fax: (951) 925-6822

**OLYMPUS TERMINALS  
TANK 55001  
NOMINAL 54,000 BBL WELDED STEEL TANK  
CARSON, CA**

TYPE: API 650

MATL: -

JOB: 41413-CF-02B

OF: 8

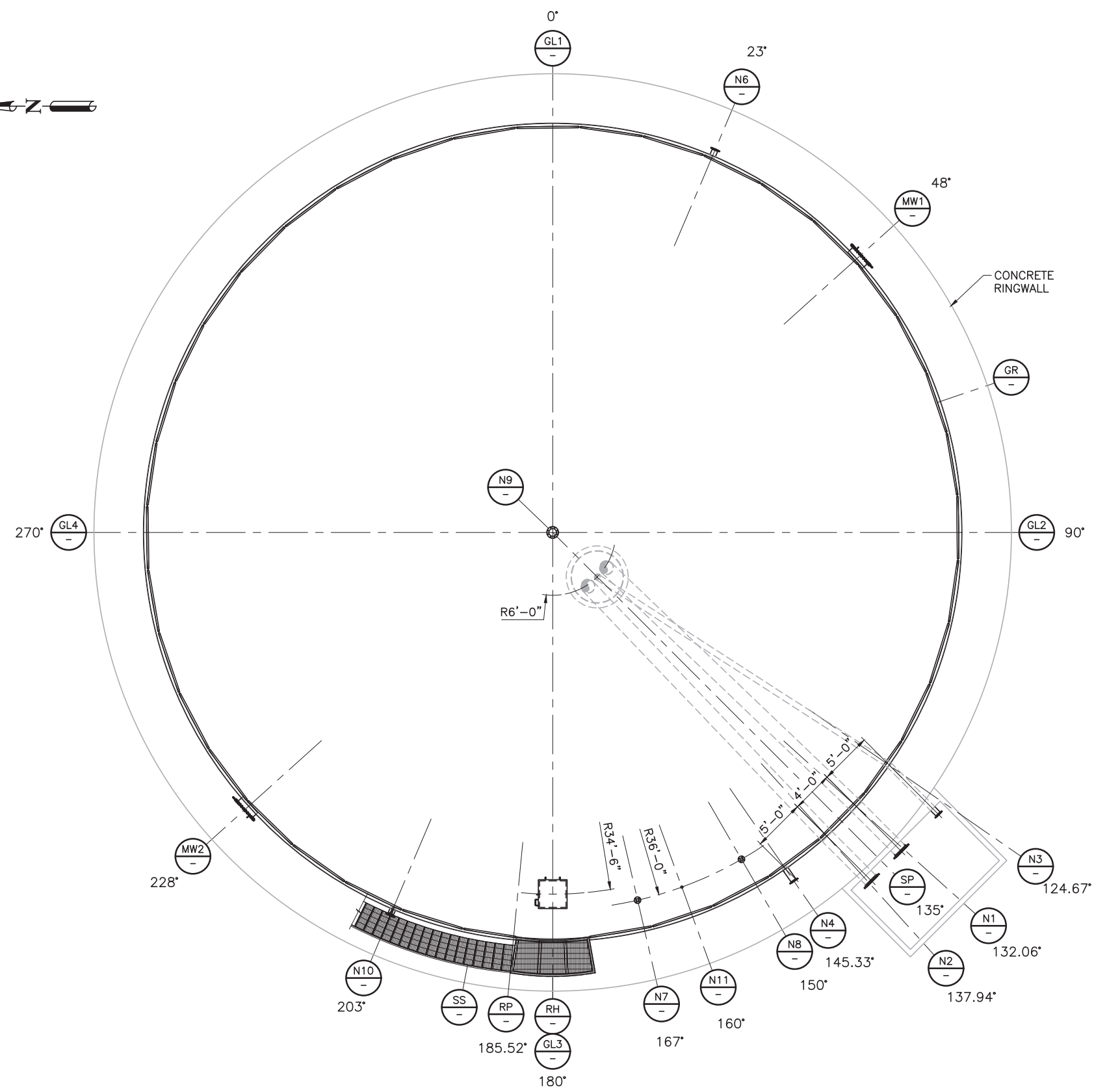
**STANDARD ABBREVIATIONS**

SHEET No.

**2**







PLAN VIEW  
ORIENTATION

**APPURTENANCE SCHEDULE**

MK	SIZE	QTY	RAT'G	PROJ	ELEV	ORIENTATION			DESCRIPTION
						DEG	DIMENSION	FROM	
MW1	ø24"	1	API	6"	2'-6"	48°	32'-8 9/16"	+0	MULTI-BOLT SHELL MANWAY
MW2	ø24"	1	API	6"	2'-6"	228°	32'-8 9/16"	+180	MULTI-BOLT SHELL MANWAY
N1	ø16"	1	150#	-	FLOOR	132.06°	28'-7 15/16"	+90	SUCTION
N2	ø16"	1	150#	-	FLOOR	137.94°	32'-8 1/16"	+90	INLET
N3	ø6"	1	150#	-	FLOOR	124.6°	23'-6 15/16"	+90	LOW SUCTION
N4	ø6"	1	150#	-	FLOOR	145.33°	37'-8 1/2"	+90	SPARE
N6	ø8"	1	150#	1'-0"	63'-6"	23°	15'-8 1/16"	+0	FIRE FOAM CONNECTION
N7	ø3"	1	150#	1'-0"	ROOF	167°	52'-5 11/16"	+90	INSTRUMENTATION
N8	ø3"	1	150#	1'-0"	ROOF	150°	40'-10 11/16"	+90	INSTRUMENTATION
N9	ø8"	1	150#	1'-0"	ROOF	-	CENTER	-	VENT
N10	ø1 1/2"	1	300#	6"	2'-0"	203°	15'-8 1/16"	+180	THERMOWELL CONNECTION
N11	ø1 1/2"	1	3000#	-	ROOF	160°	47'-8 7/16"	+90	TAPE CARRIER
GL1	2 1/2" X 4"	1	API	-	1'-0"	0°	0"	+0	GROUNDING LUG 1
GL2	2 1/2" X 4"	1	API	-	1'-0"	90°	0"	+90	GROUNDING LUG 2
GL3	2 1/2" X 4"	1	API	-	1'-0"	180°	0"	+180	GROUNDING LUG 3
GL4	2 1/2" X 4"	1	API	-	1'-0"	270°	0"	+270	GROUNDING LUG 4
GR	ø1 1/2"	1	OSHA	3'-6"	ROOF	-	AS SHOWN	-	ROOF GUARDRAIL
RH	30" SQ	1	API	6"	ROOF	180°	0"	+180	ROOF HATCH
RP	3'-6" X 8'-2"	1	OSHA	-	32'-4 1/4"	185.52°	3'-9 1/8"	+180	ROOF PLATFORM
SP	ø60"	1	API	-	FLOOR	135°	30'-8"	+90	SUMP
SS	30" WIDE	1	OSHA	6"	SHELL	-	AS SHOWN	-	STAIRWAY

**NOTES:**

1. ORIENTATION IN FEET AND INCHES ARE MEASURED CLOCKWISE ALONG THE OUTSIDE FACE OF THE TANKS FIRST SHELL RING TO THE CENTERLINE OF THE APPURTENANCE.
2. APPURTENANCE LOCATIONS SHALL BE FIELD VERIFIED BY OWNER, PRIOR TO INSTALLATION.
3. ALL ELEVATIONS ARE MEASURED FROM THE TOP OF THE TANK FLOOR AND AT THE OUTSIDE FACE OF THE SHELL.
4. FOR REFERENCE, TANK IS ø78'-0" I.D.
5. FOR REFERENCE, 1' OF TANK CIRCUMFERENCE = 8 3/16"
6. FOR REFERENCE, TOTAL STRAPPING CIRCUMFERENCE AROUND BOTTOM RING = 245'-4 1/16"

LOCATIONS & ELEVATIONS VERIFIED BY:

NAME (PRINT) \_\_\_\_\_

COMPANY \_\_\_\_\_

SIGN \_\_\_\_\_ DATE \_\_\_\_\_



THIS DOCUMENT IS THE PROPERTY OF PASO ROBLES TANK, INC. ("PRT"). IT MAY CONTAIN INFORMATION DESCRIBING TECHNOLOGY AND INTELLECTUAL PROPERTY OWNED BY PRT AND DEEMED COMMERCIALY SENSITIVE. IT IS TO BE USED ONLY IN CONNECTION WITH WORK PERFORMED BY PRT. REPRODUCTION IN WHOLE OR IN PART FOR ANY PURPOSE OTHER THAN WORK PERFORMED BY PRT IS EXPRESSLY FORBIDDEN EXCEPT BY PRIOR WRITTEN AUTHORIZATION OF PRT. ANY PERSON OR ENTITY THAT IS GRANTED ACCESS TO THIS DOCUMENT BEARS LEGAL RESPONSIBILITY TO SAFEGUARD IT AGAINST BOTH DELIBERATE AND INADVERTENT DISCLOSURE TO ANY THIRD PARTY.

Copyright PRT, Inc. 2023

REV	DATE	BY	REMARKS

DESIGNED BY: LJA  
DRAWN BY: JMC  
SHEET CHK'D BY: MJF  
SHEET CHK'D BY: -  
APPROVED BY: -  
DATE: -



**PASO ROBLES TANK, INC.**  
825 26th Street, Paso Robles, CA 93446  
Ph: (805) 227-1641 • Fax: (805) 238-9654  
3883 Wentworth Drive, Hemet, CA 92545  
Ph: (951) 925-5022 • Fax: (951) 925-6822

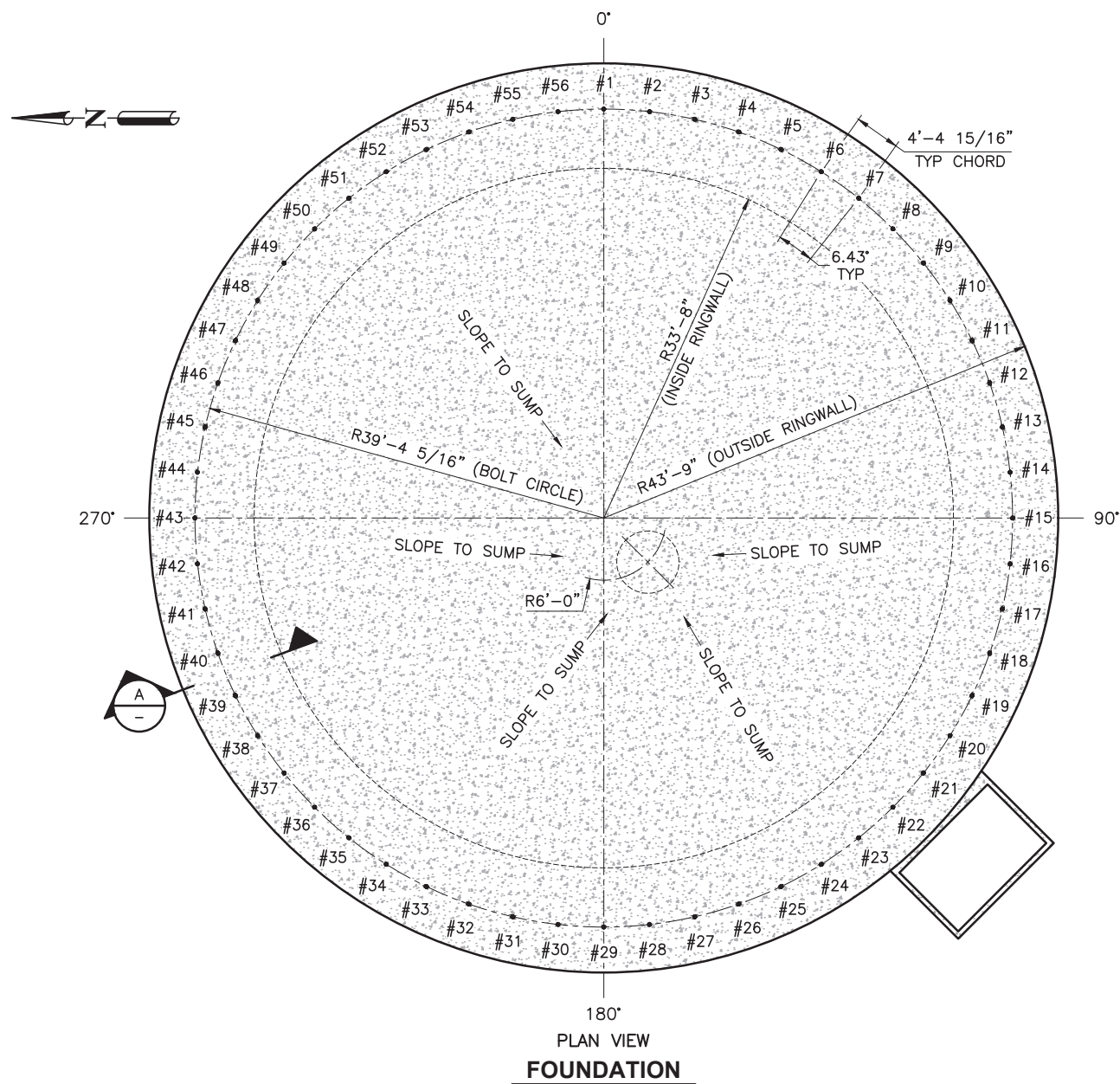
**OLYMPUS TERMINALS  
TANK 55001  
NOMINAL 54,000 BBL WELDED STEEL TANK  
CARSON, CA**

TYPE: API 650      MATL: -      JOB: 41413-CF-02B      OF: 8

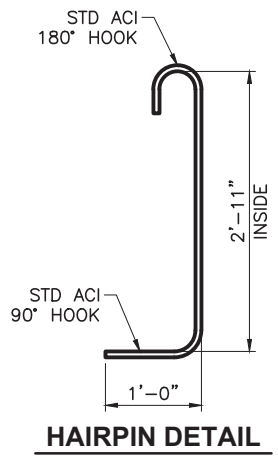
SHEET No.

**5**

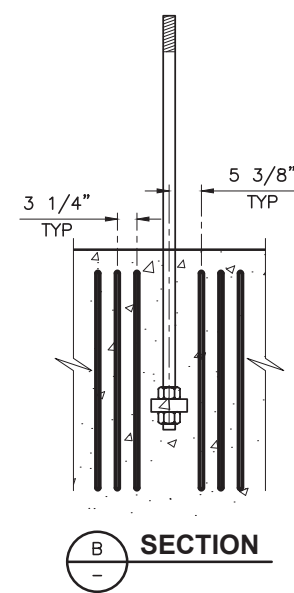
ORIENTATION



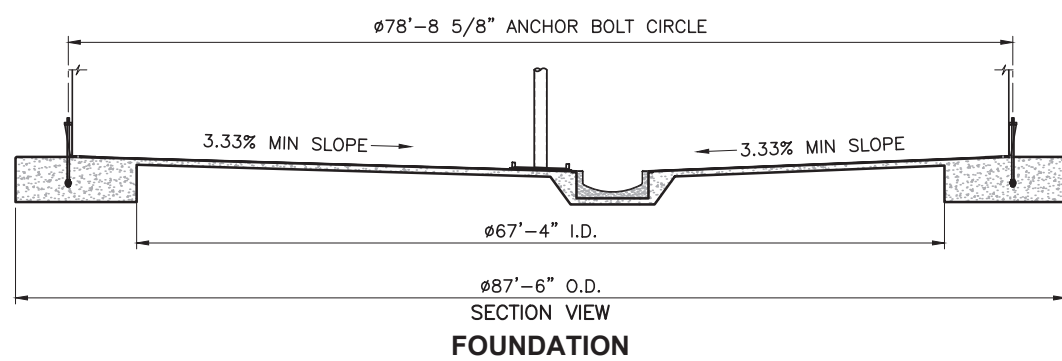
180°  
PLAN VIEW  
FOUNDATION



HAIRPIN DETAIL



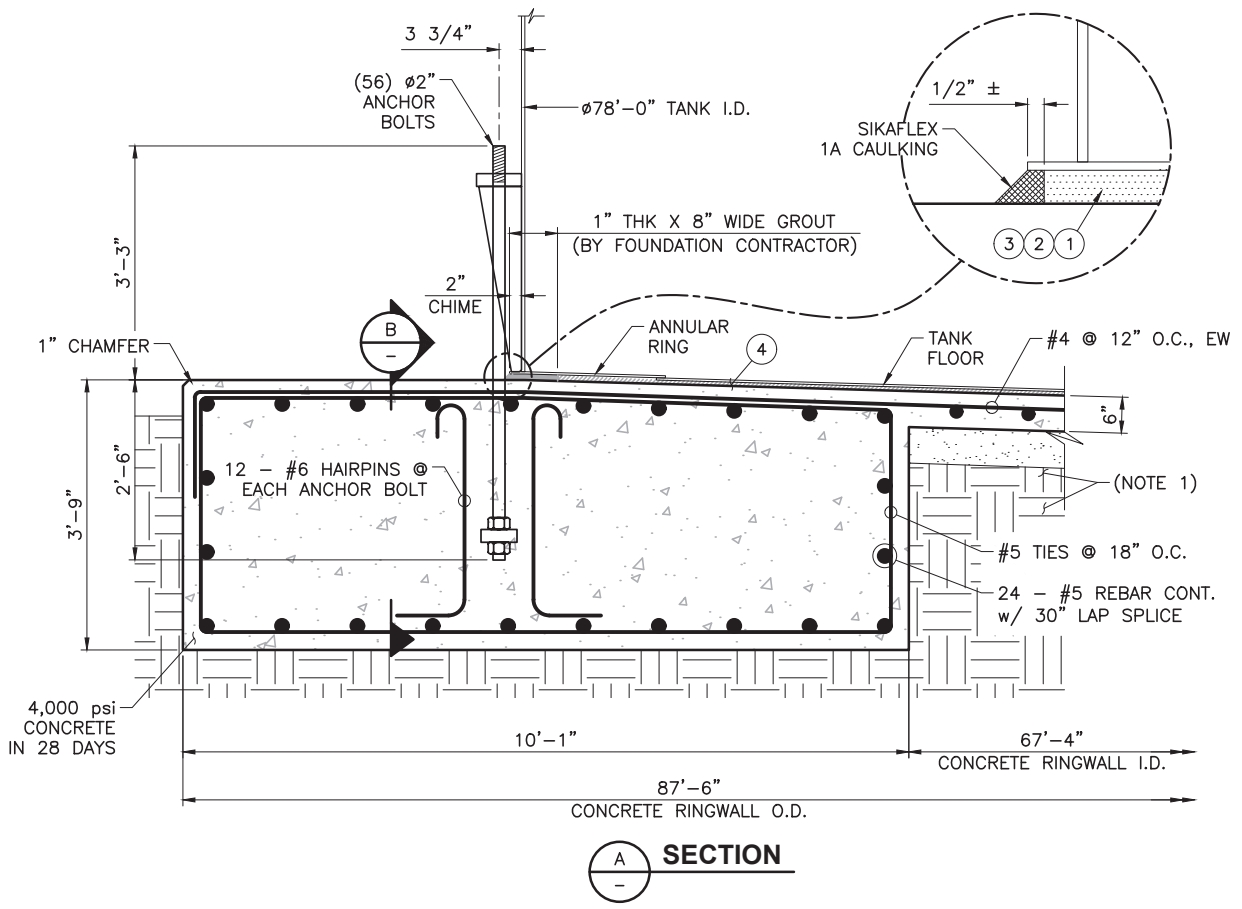
SECTION



SECTION VIEW  
FOUNDATION

BILL OF MATERIALS					
ITEM#	QTY	DESCRIPTION	MATL	WT EA (LBS)	TOTAL WT (LBS)
1	56	FB, 1" THK X 2" X 6" LG	A36	3	191
2	112	FB, 1/4" THK X 2" X 6" LG (AS REQUIRED)	A36	1	95
3	112	FB, 1/8" THK X 2" X 6" LG (AS REQUIRED)	A36	0	48
4	32	FIBERBOARD, 1" THK X 4'-0" X 10'-0" (NOTE 6)	ASTM D1751	63	2,026
				TOTAL:	333

- NOTES:
1. DRAWING IS FOR GENERAL CONFORMANCE ONLY. SEE OWNER'S DRAWING FOR SUBGRADE DETAILS.
  2. FOUNDATION AND SUBGRADE TO BE PROVIDED BY OTHERS.
  3. ANCHOR BOLTS TO BE PROVIDED BY OTHERS.
  4. REINFORCING BARS SHALL BE PER ASTM A615, GRADE 60.
  5. SHIM BARS TO BE SPACED APPROX 4'-5" O.C.
  6. TWO (2) 1/2" THICK PIECES OF FIBERBOARD CAN BE SUBSTITUTED FOR THE 1" THICK PIECES.



SECTION

THIS DOCUMENT IS THE PROPERTY OF PASO ROBLES TANK, INC. ("PRT"). IT MAY CONTAIN INFORMATION DESCRIBING TECHNOLOGY AND INTELLECTUAL PROPERTY OWNED BY PRT AND DEEMED COMMERCIALY SENSITIVE. IT IS TO BE USED ONLY IN CONNECTION WITH WORK PERFORMED BY PRT. REPRODUCTION IN WHOLE OR IN PART FOR ANY PURPOSE OTHER THAN WORK PERFORMED BY PRT IS EXPRESSLY FORBIDDEN EXCEPT BY PRIOR WRITTEN AUTHORIZATION OF PRT. ANY PERSON OR ENTITY THAT IS GRANTED ACCESS TO THIS DOCUMENT BEARS LEGAL RESPONSIBILITY TO SAFEGUARD IT AGAINST BOTH DELIBERATE AND INADVERTENT DISCLOSURE TO ANY THIRD PARTY.

Copyright PRT, Inc. 2023

REV	DATE	BY	REMARKS

DESIGNED BY: LJA  
DRAWN BY: JMC  
SHEET CHK'D BY: MJF  
SHEET CHK'D BY: -  
APPROVED BY: -  
DATE: -

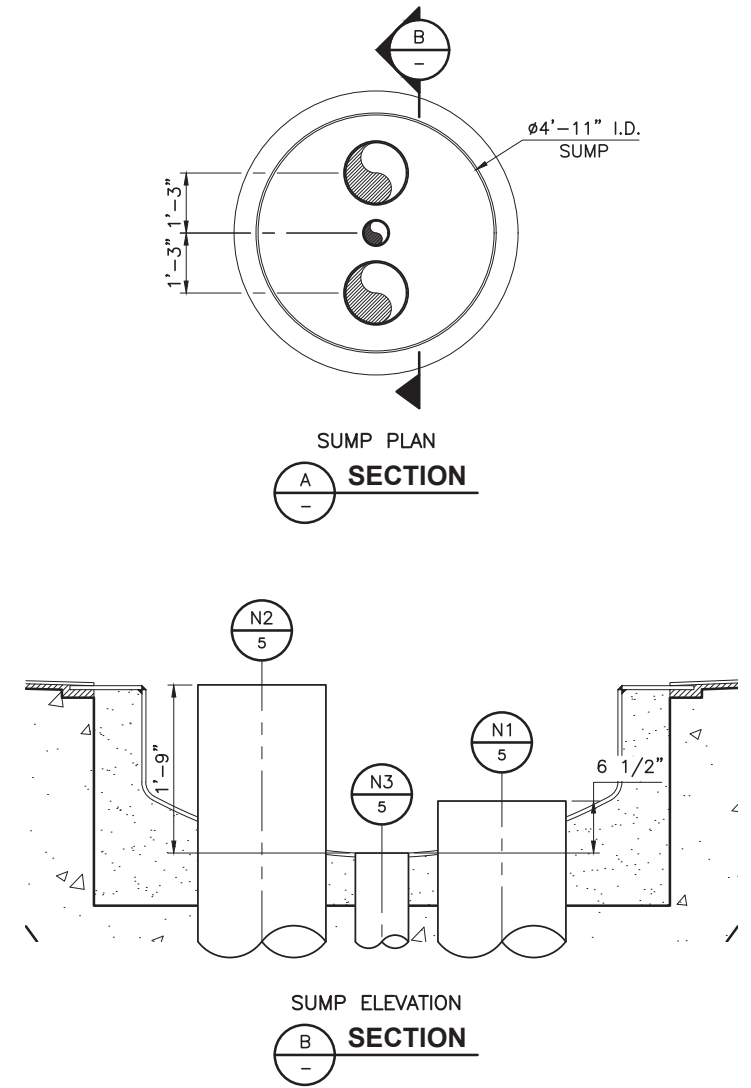
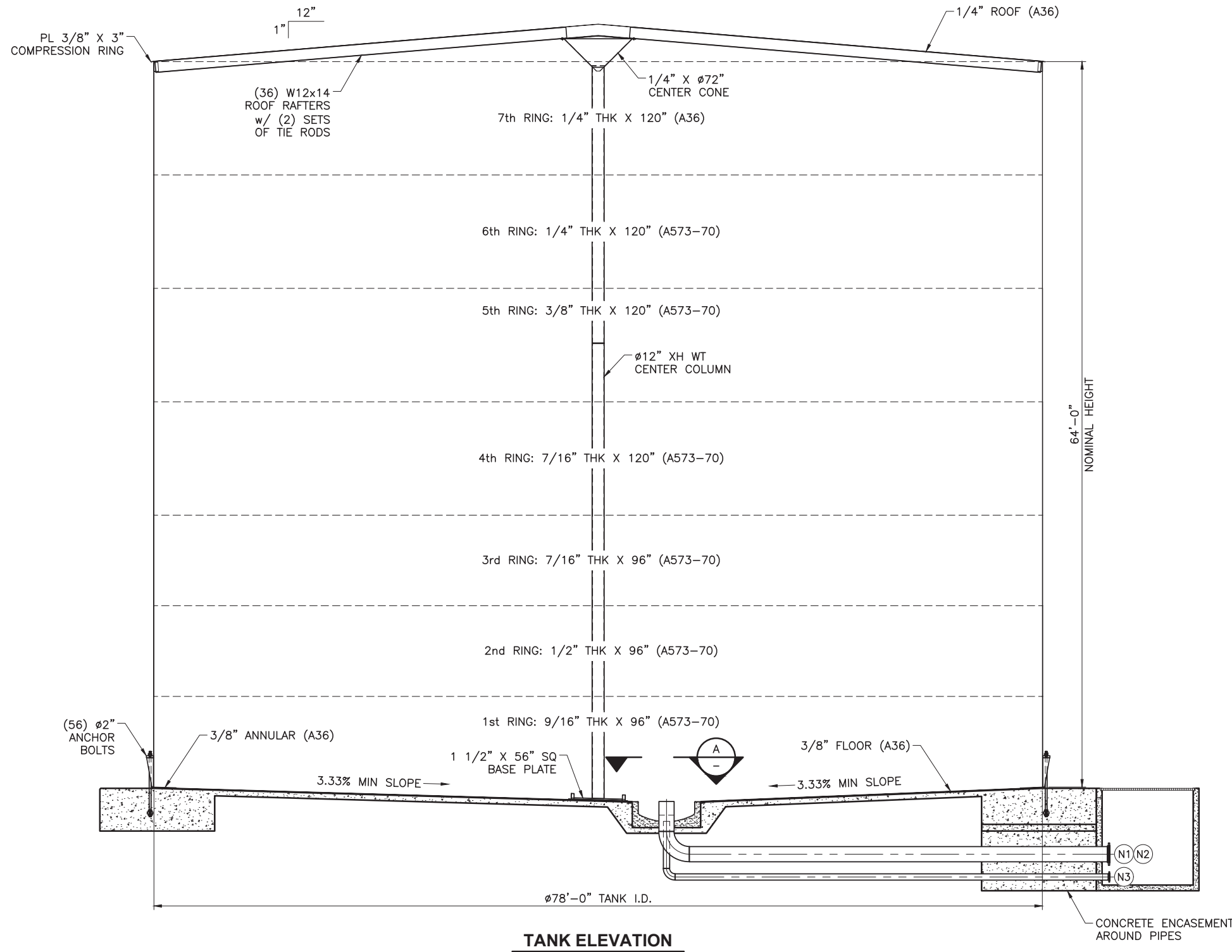


**PASO ROBLES TANK, INC.**  
825 26th Street, Paso Robles, CA 93446  
Ph: (805) 227-1641 • Fax: (805) 238-9654  
3883 Wentworth Drive, Hemet, CA 92545  
Ph: (951) 925-5022 • Fax: (951) 925-6822

**OLYMPUS TERMINALS  
TANK 55001  
NOMINAL 54,000 BBL WELDED STEEL TANK  
CARSON, CA**

FOUNDATION		SHEET No. 6	
TYPE: API 650	MATL: -	JOB: 41413-CF-02B	OF: 8





THIS DOCUMENT IS THE PROPERTY OF PASO ROBLES TANK, INC. ("PRT"). IT MAY CONTAIN INFORMATION DESCRIBING TECHNOLOGY AND INTELLECTUAL PROPERTY OWNED BY PRT AND DEEMED COMMERCIALY SENSITIVE. IT IS TO BE USED ONLY IN CONNECTION WITH WORK PERFORMED BY PRT. REPRODUCTION IN WHOLE OR IN PART FOR ANY PURPOSE OTHER THAN WORK PERFORMED BY PRT IS EXPRESSLY FORBIDDEN EXCEPT BY PRIOR WRITTEN AUTHORIZATION OF PRT. ANY PERSON OR ENTITY THAT IS GRANTED ACCESS TO THIS DOCUMENT BEARS LEGAL RESPONSIBILITY TO SAFEGUARD IT AGAINST BOTH DELIBERATE AND INADVERTENT DISCLOSURE TO ANY THIRD PARTY.

Copyright PRT, Inc. 2023

REV	DATE	BY	REMARKS

DESIGNED BY: LJA  
 DRAWN BY: JMC  
 SHEET CHK'D BY: MJF  
 SHEET CHK'D BY: -  
 APPROVED BY: -  
 DATE: -



**PASO ROBLES TANK, INC.**  
 825 26th Street, Paso Robles, CA 93446  
 Ph: (805) 227-1641 • Fax: (805) 238-9654  
 3883 Wentworth Drive, Hemet, CA 92545  
 Ph: (951) 925-5022 • Fax: (951) 925-6822

**OLYMPUS TERMINALS  
 TANK 55001  
 NOMINAL 54,000 BBL WELDED STEEL TANK  
 CARSON, CA**

**TANK ELEVATION**  
 TYPE: API 650  
 MATL: -  
 JOB: 41413-CF-02B

SHEET No. **8**  
 OF: 8

