



RELEASED 11/23/2023 10:58:13 AM
PROGRESS PRINT - DO NOT
USE FOR CONTRACT PRICING

1330 Eadswood Industrial Blvd
Suite A-100
Alhambra, CA 91803
408-555-6344 Fax
408-555-6344 Cell

365 N. Coast Hwy
Laguna Beach, CA 92651
561-713-4275

www.ysmdesign.com

Signed & Sealed:

Copyright 1/21/2024, P.C. 10/22/2023 08:00:10
All rights reserved. No part of this document may be reproduced, stored in a retrieval system, or transmitted in any form or by any means, electronic, mechanical, photocopying, recording, or by any information storage and retrieval system, without the prior written permission of YSM Design, P.C. All other rights reserved.

Ret Date Comments

CAD FILES

A schedule item must accompany the distribution of any set of Revit files from YSM Design P.C. must be completed and sealed prior to use of the Revit files. The user of the Revit files, in stated liability, acknowledges the user of the Revit files.

The user of the CAD or Revit files agrees that YSM Design P.C. will not be held responsible for any errors or omissions in the Revit files, including any errors or omissions in the Revit files, and that the user of the Revit files, in stated liability, acknowledges the user of the Revit files.

YSM Design P.C. makes no warranty, either expressed or implied, of merchantability or fitness for any particular purpose. In no event shall YSM Design P.C. be liable for any one of profit or any damages resulting from the use of these documents. The user of these documents understands and agrees that the user acknowledges full and complete responsibility for any errors or omissions in the Revit files, including any errors or omissions in the Revit files, and that the user of the Revit files, in stated liability, acknowledges the user of the Revit files.

Client:
BRANDON STEVEN MOTORS

3974 S. FIGUEROA ST. LOS ANGELES, CA. 90037

Project:
Hyundai Carson

2305 E 223rd St, Carson, CA 90810

Project Number: 22096
Drawn By: Author
Checked By: Checker
Approved By: Approver

Sheet Title:
COVER

Sheet Number:
A001



DEFERRED SUBMITTALS table with columns: REQUIRED, RECEIVED, and description of deferred items like fire sprinkler shop drawings, etc.

ABBREVIATIONS table listing various materials and components like ANCHOR BOLT, ALUMINUM COMPOSITE MATERIAL, etc.

PROJECT SCOPE NARRATIVE: DETAILS UPDATES TO NEW BASE PROGRAM REMOVE TEST STRUCTURES FROM PARKING LOT... EXTERIOR: FACILITY WITH NEW HIGH PRESSURE NEW PAINT AND FINISHES TO THE EXTERIOR OF THE BUILDING FOR THE HYUNDAI BASE PROGRAM... INTERIOR: THE FACILITY PROVIDES AND FINISHES INTERIOR WALLS, RESTROOMS, FLOORING, LIGHTING AND NEW ADA COMPLIANT.

GENERAL NOTES OF CONSTRUCTION: THE GENERAL CONTRACTOR ASSUMES SOLE RESPONSIBILITY FOR THE DESIGN, CONSTRUCTION AND COMPLETION OF THE WORK... MEANS AND METHODS OF CONSTRUCTION: THE GENERAL CONTRACTOR ASSUMES SOLE RESPONSIBILITY FOR THE DESIGN, CONSTRUCTION AND COMPLETION OF THE WORK... FIELD COORDINATION: FIELD COORDINATION BETWEEN SYSTEMS INSTALLATION REMAINS THE RESPONSIBILITY OF THE GENERAL CONTRACTOR...

DRAWING LIST table with columns: No., Description, and Status. Lists various drawing sheets like ARCHITECTURAL SITE PLAN, FLOOR PLAN, etc.

PROJECT DIRECTORY table listing various roles and contact information for Brandon Steven, YSM Design P.C., and other project partners.

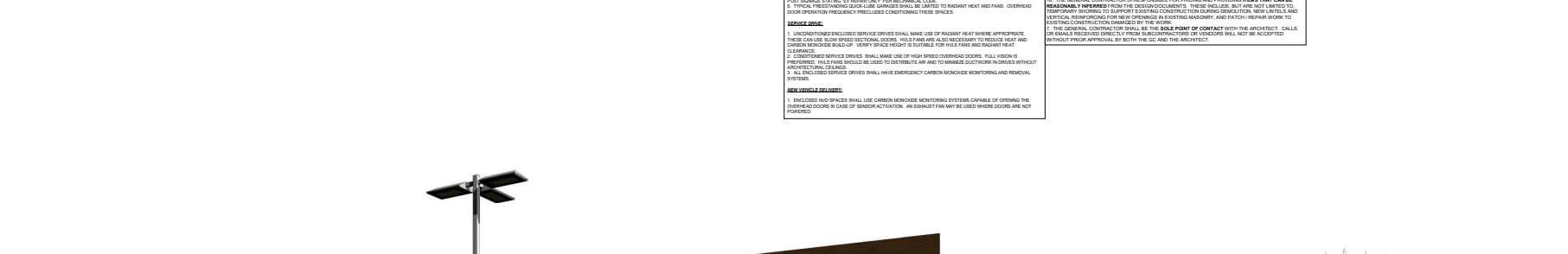
COORDINATION DRAWINGS AND CAD BACKGROUNDS table with columns: HOLD, ADDRESS, and description of coordination items like structural steel, etc.

SYMBOL LEGEND table defining drawing symbols for items like FRAME ELEVATION, DOOR NUMBER, SECTION MARK, etc.

DEFERRED DESIGN AND DELEGATED DESIGN: THE GENERAL CONTRACTOR SHALL REVIEW AND APPROVE ALL DEFERRED DESIGN AND DELEGATED DESIGN ITEMS... THE GENERAL CONTRACTOR SHALL REVIEW AND APPROVE ALL DEFERRED DESIGN AND DELEGATED DESIGN ITEMS... THE GENERAL CONTRACTOR SHALL REVIEW AND APPROVE ALL DEFERRED DESIGN AND DELEGATED DESIGN ITEMS...

MECHANICAL DESIGN STANDARD: THE GENERAL CONTRACTOR SHALL PROVIDE ALL MECHANICAL DESIGN STANDARD... THE GENERAL CONTRACTOR SHALL PROVIDE ALL MECHANICAL DESIGN STANDARD... THE GENERAL CONTRACTOR SHALL PROVIDE ALL MECHANICAL DESIGN STANDARD...

MECHANICAL DESIGN STANDARD table with columns: NO., DESCRIPTION, and STATUS. Lists various mechanical design standards like VEHICLE REPAIR GARAGES, etc.

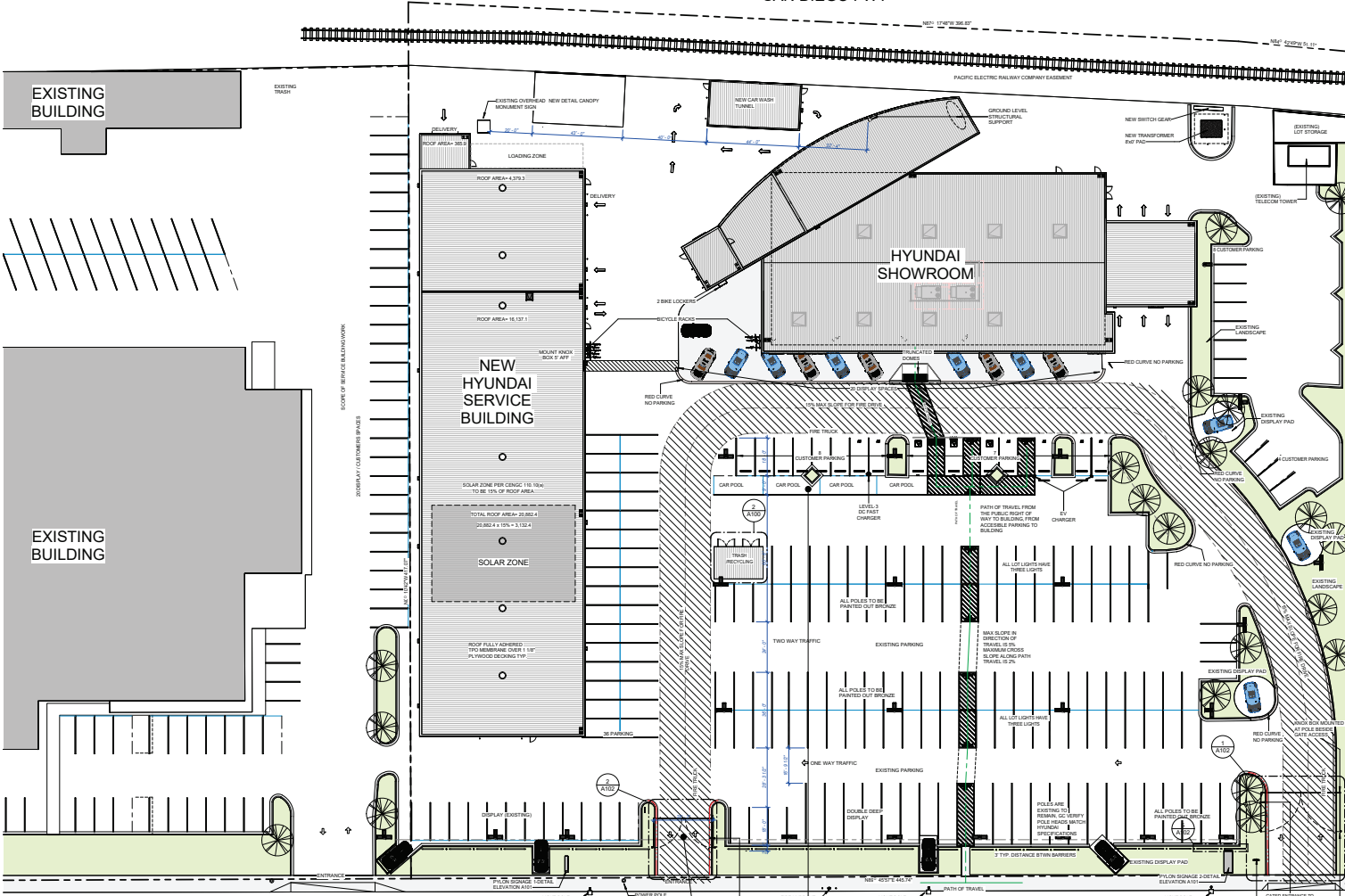


HYUNDAI CARSON

Carson, CA

ATTACHMENT NO. 1

SAN DIEGO FWY



ARCH SITE PLAN NOTES

- 1. SEE FRESH PLAN FOR SIDEWALK, JOINTS AND FINISH PATTERNS.
2. SEE CIVIL SHEETS.
3. ALL ELECTRICAL COMPLIANT LED LIGHTING AS 2008 IBC STANDARDS.

PUBLIC FIRE FLOW CALCULATIONS

THE REQUIRED FIRE FLOW FOR FIRE HYDRANTS AT THIS LOCATION IS 1,500 GPM AT 20 PSI RESIDUAL PRESSURE FOR A DURATION OF 2 HOURS OVER AND ABOVE MAXIMUM DAILY DOMESTIC DEMAND. FIRE CODE 907.3 AND APPENDIX B106.2

THE REQUIRED FIRE FLOW IS BASED ON THE FOLLOWING CALCULATION:
TYPE OF CONSTRUCTION FOR THE BUILDING CODE: I-B
FIRE FLOW CALCULATION AREA: 14,356 SQ. FT.
FIRE FLOW BASED ON THE FIRE FLOW CALCULATION AREA: 2,500 GPM
TOTAL FIRE FLOW REQUIRED: 1,000 GPM

CODE GENERAL NOTES

IN THE EVENT OF POWER SUPPLY FAILURE IN ROOMS, SPACES AND BUILDINGS THAT REQUIRE TWO OR MORE MEANS OF EGRESS, AN EMERGENCY ELECTRICAL SYSTEM FOR A DURATION OF NO LESS THAN MINUTES WILL BE PROVIDED IN ACCORDANCE WITH THE PROVISIONS SET FORTH IN BUILDING CODE 1098.3.

ALL NEW BUILDINGS SHALL HAVE APPROVED RADIO COVERAGE FOR EMERGENCY RESPONDERS WITHIN THE BUILDING BASED UPON THE EXISTING COVERAGE LEVELS OF THE PUBLIC SAFETY COMMUNICATION SYSTEMS UTILIZED BY THE JURISDICTION NEARABOUT AT THE EXTERIOR OF THE BUILDING. FIRE CODE 916.

FIRE EXTINGUISHERS - PORTABLE EXTINGUISHERS SHALL BE INSTALLED IN LOCATIONS AS REQUIRED BY FIRE CODE 906.

CURTAINS, DRAPES AND OTHER DECORATIVE MATERIALS SUSPENDED FROM THE WALLS OR CEILING SHALL MEET THE FLAME SPREAD, PRODUCTION PERFORMANCE CRITERIA OF NFPA 701 IN ACCORDANCE WITH SECTION 907.3 OR BE NONCOMBUSTIBLE. FIRE CODE 907.

EXIT SIGNS - THE LOCAL AHA SHALL GIVE FINAL DETERMINATION ON THE QUANTITY AND LOCATION OF EXIT SIGNS. IN ANY EVENT, NO EXIT SIGN SHALL BE MOUNTED HIGHER THAN 6'7" ABOVE THE FINISH FLOOR TO ENSURE CONTINUED VISIBILITY FOR A DURATION OF NOT LESS THAN 10 MINUTES IN CASES OF PRIMARY POWER LOSS. THE SIGN ILLUMINATION SHALL BE CONNECTED TO AN EMERGENCY ILLUMINATION SYSTEM PROVIDED FROM STORAGE BATTERIES, ULT EQUIPMENT OR AN ON-SITE GENERATOR.

3. THE MEANS OF EGRESS TRAVEL, INCLUDING THE EXIT DISCHARGE, SHALL BE ILLUMINATED AT ALL TIMES THE BUILDING SPACE BEING THE MEANS OF EGRESS IS OCCUPIED WITH A LIGHT INTENSITY OF NO LESS THAN 1 FOOT-CANDLE AT THE FOLLOWING SIGNIFICANT CODE 1008.2.

FIRE ALARMS - THE LOCAL AHA SHALL GIVE FINAL DETERMINATION ON THE QUANTITY AND LOCATION OF ALL FIRE ALARM SYSTEMS AND DEVICES. THE FIRE ALARM SYSTEM SHALL BE DESIGNED BY AN ENGINEER LICENSED IN THE JURISDICTION OF THIS PROJECT. ANY DEVICE LOCATIONS SHOWN IN THESE DRAWINGS SHALL DEFER TO THE REQUIREMENTS OF SUCH ENGINEER AND THE AHA. VSM IS NOT QUALIFIED TO DESIGN THE FIRE ALARM SYSTEM. THE GC SHALL COORDINATE WITH THE AHA FOR FINAL PLACEMENT OF DEVICES.

EGRESS DOORS - EGRESS DOORS SHALL BE READY TO OPENABLE FROM THE EGRESS SIDE WITHOUT THE USE OF A KEY OR ANY SPECIAL, KNOWLEDGE OR EFFORT AND NO MORE THAN 30 POUNDS OF PRESSURE IN ACCORDANCE WITH BUILDING CODE 1011.10.

DUMPSTERS - DUMPSTERS AND CONTAINERS WITH AN INDIVIDUAL CAPACITY OF 1.5 CUBIC YARDS OR MORE SHALL NOT BE STORED IN BALCONIES OR PLACED WITHIN 5 FEET OF THE EXTERIOR WALLS OF THE BUILDING. ALL CONTAINERS AND DUMPSTERS ARE PROTECTED BY AN APPROVED AUTOMATIC FIRE SPRINKLER SYSTEM. FIRE CODE 904.3.

INTERIOR FINISHES - INTERIOR WALL AND CEILING FINISHES SHALL BE CLASSIFIED IN ACCORDANCE WITH BUILDING CODE 803 AND TABLE 803.3. FIRE CODE 803.

FIRE DEPARTMENT CONNECTIONS SHALL BE LOCATED ON THE STREET-ADDRESS SIDE OF BUILDINGS. FACINGS APPROVED FIRE APPARATUS ACCESS ROADS SHALL BE WITHIN 150 FEET (VIA VEHICULAR ACCESS) OF AN ACCESSIBLE PUBLIC FIRE HYDRANT, AND BE CLOSER TO THE STREET CURB FACE AS POSSIBLE, FULLY VISIBLE AND RECOGNIZABLE FROM THE STREET. FIRE APPARATUS ACCESS ROAD OR NEAREST POINT OF DEPARTMENT VEHICLE ACCESS OR AS OTHERWISE APPROVED BY THE FIRE CODE OFFICIAL. FIRE DEPARTMENT CONNECTIONS SHALL BE LOCATED A MINIMUM OF 25 FEET (7.62 M) FROM THE STRUCTURE. FIRE CODE 811.2.

THE MINIMUM TURNING RADIUS SHALL BE NOT LESS THAN 32 FEET (9.754 M) MEASURED AT THE CENTERLINE OF THE REQUIRED ACCESS ROADWAY. FIRE CODE 811.2.4.

PROVIDE APPROVED SIGNS OR OTHER APPROVED NOTICES OR MARKINGS THAT INCLUDE THE WORDS 'NO PARKING - FIRE LANE'. SIGNS SHALL HAVE A MINIMUM DIMENSION BY 12 INCHES (305 MM) WIDE BY 18 INCHES (457 MM) HIGH AND HAVE RED LETTERS ON A WHITE REFLECTIVE BACKGROUND. SIGNS SHALL BE POSTED ON ONE OR BOTH SIDES OF THE ROAD AS REQUIRED. FIRE CODE 802.3.

FIRE APPARATUS ACCESS ROADS SHALL NOT EXCEED 15 PERCENT IN GRADE. FIRE CODE 802.3.3.

APPROVED BUILDING ADDRESS NUMBERS, BUILDING NUMBERS OR APPROVED BUILDING IDENTIFICATION SHALL BE PROVIDED AND MAINTAINED SO AS TO BE FULLY VISIBLE AND LEGIBLE FROM THE STREET FRONTING THE PROPERTY. THE NUMBERS SHALL CONTRAST WITH THEIR BACKGROUND. BE ARABIC NUMBERS OR PHASE LETTERS, AND BE A MINIMUM OF 4 INCHES HIGH WITH THE MINIMUM STROKE WIDTH OF 0.5 INCH. FIRE CODE 805.1.

SPACING OF FIRE HYDRANTS SHALL NOT EXCEED THE DISTANCES SPECIFIED IN FIRE CODE 1051.2, 1053.3 & C106.

ALL FIRE HYDRANTS SHALL MEASURE 6" X 4" X 2 1/2" BRASS OR BRONZE, CONFORMING TO AMERICAN WATER WORKS ASSOCIATION STANDARD CODE OR APPROVED EQUAL.

SECURITY GATES - WHEN SECURITY GATES ARE PROVIDED, MAINTAIN A MINIMUM ACCESS WIDTH OF 20 FEET. THE SECURITY GATE SHALL BE PROVIDED WITH AN APPROVED MEANS OF EMERGENCY OPERATION AND SHALL BE MAINTAINED OPERATIONAL AT ALL TIMES AND RELEASER OR REPAIRED WHEN DEFECTIVE. ELECTRIC GATE OPERATORS, WHERE PROVIDED, SHALL BE LISTED IN ACCORDANCE WITH UL 325. GATES SHALL BE CONSTRUCTED OF STEEL OR ALUMINUM, SHALL BE REINFORCED, CONSTRUCTED AND INSTALLED TO COMPLY WITH THE REQUIREMENTS OF ASTM F2500. GATES SHALL BE OF THE SWINGING OR SLIDING TYPE. CONSTRUCTION OF GATES SHALL BE OF MATERIALS THAT ALLOW MANUAL OPERATION BY ONE PERSON. FIRE CODE 805.6.

EVERY APPLICATION FOR A BUILDING PERMIT SHALL BE ACCOMPANIED BY EVIDENCE INDICATING THAT THE PROPOSED STRUCTURE IS PROVIDED AND MAINTAINED SO AS TO BE FULLY VISIBLE AND LEGIBLE FROM THE STREET FRONTING THE PROPERTY. THE NUMBERS SHALL CONTRAST WITH THEIR BACKGROUND. BE ARABIC NUMBERS OR PHASE LETTERS, AND BE A MINIMUM OF 4 INCHES HIGH WITH THE MINIMUM STROKE WIDTH OF 0.5 INCH. FIRE CODE 805.1.

ALL REQUIRED PUBLIC FIRE HYDRANTS SHALL BE INSTALLED, TESTED AND ACCEPTED PRIOR TO BEGINNING CONSTRUCTION. FIRE CODE 914.

PROVIDE A MINIMUM UNOBSTRUCTED WIDTH OF 26 FEET, EXCLUSIVE OF SHOULDERS, EXCEPT FOR APPROVED SECURITY GATES IN ACCORDANCE WITH SECTION 801.2 AND AN UNOBSTRUCTED VERTICAL CLEARANCE 'CLEAR TO SKY' FIRE DEPARTMENT VEHICLES ACCESS TO WITHIN 150 FEET OF ALL PORTIONS OF THE EXTERIOR WALLS OF THE FIRST STORY OF THE BUILDING, AS MEASURED BY AN APPROVED ROUTE AROUND THE EXTERIOR OF THE BUILDING. FIRE CODE 801.1.1, 801.2.1.2.

Table with columns: HYUNDAI PARKING COUNT, REQUIRED PARKING, REQUIRED BY CHARGES STATIONS, REQUIRED ACCESSIBLE BY CHARGES STATIONS, REQUIRED CLEAN AIR VEHICLES RAMPED, REQUIRED CLEAN ADA SPACES, PROVIDED PARKING, INVENTORY, GRAND TOTAL.

Table with columns: TOTAL AREA, PLAYING AREA, PARKING AREA, DRIVEWAY, TOTAL SITE AREA.

ysm DESIGN ARCHITECTURE+PLANNING logo and contact information including address and phone number.

Table with columns: Rev, Date, Comments. Contains revision records.

CAD FILES
A warning that the user is about to delete the distribution of the user of their CAD or Revit files agrees to delete, modify, and not use any copies of the user of their CAD or Revit files.

VSM Design, PC, Inc. makes no warranty, either expressed or implied, of the accuracy of the information provided by its software. VSM Design, PC, Inc. is not responsible for any damages resulting from the use of its software.

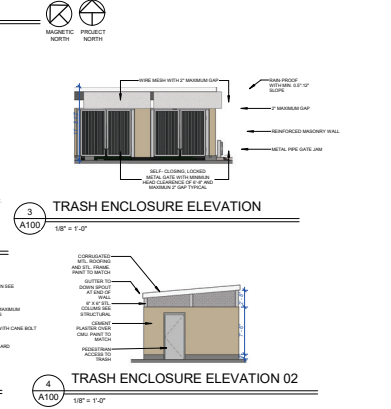
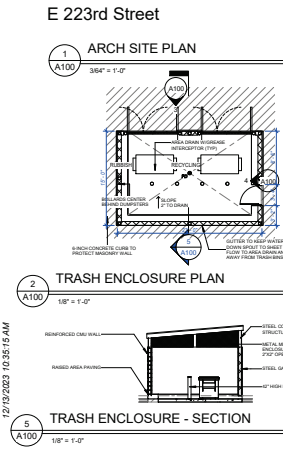


Table with columns: SITE DATA, CONSTRUCTION TYPE, STORES, FIRE SPRINKLER SYSTEM, TOTAL SERVICE BUILDING AREA, TOTAL SHOWROOM BUILDING AREA, TOTAL BUILDING AREA, TOTAL LANDSCAPE AREA, TOTAL HARDCAPE AREA.

Table with columns: PARKING DATA, PARKING PROVIDED, EV CHARGING, REQUIRED BY CHARGES STATIONS, REQUIRED BY CHARGES STATIONS, REQUIRED CLEAN AIR VEHICLE CARPOOL, REQUIRED ACCESSIBLE PARKING.

Client information for Brandon Steven Motors, Architectural Site Plan by Hyundai Carson, and A100 logo.

HYUNDAI AREA TOTALS	
REQUIRED	PROPOSED
PARTS	875 SF
SERVICE DRIVE	1729 SF
SERVICE SHOP	16430 SF
SHOWROOM	12914 SF
VEHICLE DISPLAY	4370 SF
TOTAL BUILDINGS	44828 SF
SEALY SERVICE	4 MIN
CAR UNDER COVER	4 MIN
PRODUCTIVE DRIVE	22 MIN
USEABLE LAND	181,108 SF
PROPOSED SITE AREA	133,729 SF
OFFICE OFFICE PARKING	8
TOTAL LAND	246,730 SF
	14,633 SF

HYUNDAI PLANNING GUIDE CHART

- PARTS
- SERVICE BAYS
- SERVICE DRIVE
- SHOWROOM
- VEHICLE DISPLAY

Signed & Sealed:

Copyright (c) YSM Design, P.C. 03/2023 8/1/23

Alhambra, CA, 91801, 404-355-8394, 404-355-8394 fax, 404-355-8394 cell

305 N. Coast Hwy
Laguna Beach CA 92651
949-745-6275

www.ysmdesign.com

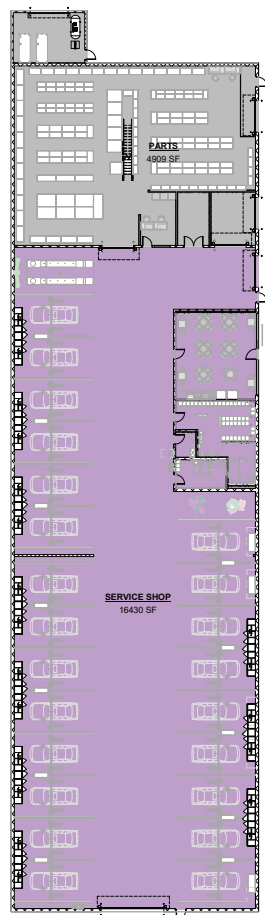
Rev	Date	Comments

CAD FILES

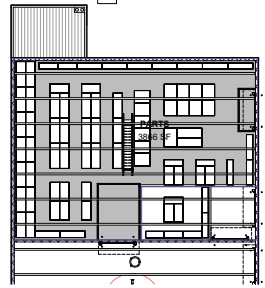
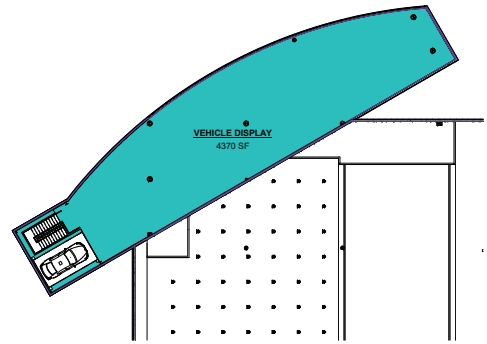
A website user must accompany the distribution of cad or Revit files from YSM Design PC and must be completed and marked prior to use by the user. By using this file, the user agrees to the terms of the release form, as stated below, regardless of separation of the files.

The user of this CAD or Revit file agrees to defend, indemnify, and hold YSM Design PC harmless from any damage liability, or cost, including all attorney's fees and cost of defense, arising from any use, reuse or modification of the plan, specification or other documents. No third party or entity which accepts or obtains the plan, specification or other documents from here on through the user.

YSM Design PC makes no warranties, either expressed or implied, of merchantability or fitness for any particular purpose. In no event shall YSM Design PC be liable for any loss of profit or any damages resulting from the use of these documents. YSM Design PC may substitute limited use of these documents with only that the user releases YSM Design PC from liability. The user of these documents, whether or not the user releases YSM Design PC from liability, shall accept full and complete responsibility for any and all claims arising as a result from use or distribution of these documents, intentional or otherwise.



1 OVERALL AREAS FIRST FLOOR
1/16" = 1'-0"



2 OVERALL AREAS SECOND FLOOR
1/16" = 1'-0"

Client:
BRANDON STEVEN MOTORS

3974 S. FIGUEROA ST. LOS ANGELES, CA. 90037

Project:
Hyundai Carson

2205 E 223rd St, Carson, CA 90810

Project Number: 22096
Drawn By: Author
Checked By: Checker
Approved By: Approver

Sheet Title:
AREAS ANALYSIS

Sheet Number:
A100a



SHOP INTERIOR

SCAN QR CODE TO SEE IMAGE.

GRIDLINE TYPE LEGEND

- NEW GRIDLINE
- EXISTING GRIDLINE
- F.O. MASONRY GRIDLINE
- Nx - NEW WORK SCOPE
- Ex - EXISTING CONSTRUCTION

SCOPE OF WORK LEGEND

NOTE: THESE DESIGNATIONS ARE SPECIFIC TO EACH DRAWING SHEET. GC SHALL REVIEW SCOPE INDICATED ON EVERY SHEET.

HATCH REPRESENTS AREAS OUT OF PROJECT SCOPE. NO WORK SHALL BE DONE IN THESE AREAS UNLESS OTHERWISE NOTED.

IN-SCOPE WORK IS SPECIFICALLY DETAILED IN THE CONSTRUCTION DOCUMENTS.

HATCH REPRESENTS AREAS OF LIMITED SCOPE. SEE NOTE BELOW.

LIMITS SCOPE INCLUDES WALL PANEL, WALL BASE, ELECTRICAL DEVICE COVER PLATES & ELECTRICAL DEVICE COVERS.

REPAIR AND PREP EXISTING CONSTRUCTION SHALL BE AS FOLLOWS: PAINTING FOR "LIKE NEW" CONDITION. REPAIR/REPLACE WALL BASE & ELECTRICAL DEVICE COVER PLATES AS REQUIRED. REPLACE DAMAGED DIFFUSERS AND GRILLES TO MATCH ADJACENT SPECIFICATION, AND CLEAN ALL DIFFUSERS AND GRILLES TO RESTORE TO ORIGINAL CONDITION. THESE MUST BE VISUALLY INSPECTED BY THE GC TO DETERMINE SCOPE AND PRICE FOR THE CLIENT AT THE TIME OF BID. THESE ITEMS ARE NOT SPECIFICALLY INDICATED IN THE SET OF CONSTRUCTION DOCUMENTS.

PLAN NOTES

- SEE CODE PLAN FOR FIRE EXTINGUISHERS.
- SEE PLAN FINISHES FOR LAB EGGES, HETS, MEDS, AND MASONRY WALLS THAT FORM SLAB EDGES.
- SEE AREA PLAN FOR ACCESSIBLE ROADS, SIGNAGES, AND FLOOR ELEVATION CHANGES.
- SEE AREA PLAN FOR FLOOR FINISHES, FLOOR MATERIALS, AND EQUIPMENT.
- ALL DIMENSIONS ARE TO FACE OF COP, FACE OF COAL, OR FACE OF STOREFRONT FRAMING UNLESS NOTED OTHERWISE.
- SEE FINISH PLAN FOR WALL, TILE, AND WOOD WALL PANEL LOCATIONS.
- SEE PARTITION TYPE LEGEND FOR PARTITION, SECTION AND FINISHES.
- SEE PARTITION TYPE LEGEND FOR PARTITION, SECTION AND FINISHES.
- TOP OF ELEVATION REPRESENTS TOP OF CIVIL FINISH. STUDY FRAMING MAY CONTRIBUTE TO DECK, OR BE BRACED TO DECK, AS REQUIRED BY ENGINEER'S STUDY DRAWING. GC SHALL FIELD COORDINATE WITH OTHER BUILDING SYSTEMS.
- ALL EQUIPMENT, WIRE, TOOL BOXES AND BENCHES SHALL BE BLACK PER GSD 2.0 STANDARDS.

FIRE EQUIPMENT LEGEND

- FE SURFACE MOUNTED FIRE EXTINGUISHER
- FE RECESSED OR ISM RECESSED FIRE EXTINGUISHER CABINET
- FAP FIRE ALARM CONTROL PANEL
- FAP FIRE ALARM ANNUNCIATOR PANEL
- FPI FIRE ALARM INITIATOR IN PATCH OF COVERS
- FE ALL FIRE EXTINGUISHERS AND TO BE KEPT IN EGRESS PATHS
- FE FIRE ALARM CONTROL PANEL (SEE GSD 2.0 STANDARDS)
- FE FIRE ALARM ANNUNCIATOR PANEL (SEE GSD 2.0 STANDARDS)
- FE FIRE ALARM INITIATOR IN PATCH OF COVERS (SEE GSD 2.0 STANDARDS)

PARTITION SYMBOL LEGEND

- 1-HOUR FIRE BARRIER
- 2-HOUR FIRE BARRIER
- 3-HOUR FIRE BARRIER
- EXISTING PARTITION
- PROPOSED PARTITION

PARTITION LEGEND

- 1-HOUR FIRE BARRIER
- 2-HOUR FIRE BARRIER
- 3-HOUR FIRE BARRIER
- EXISTING PARTITION
- PROPOSED PARTITION



1300 Easonville Industrial Blvd
 Suite A-100
 Alhambra, CA 91803
 408-252-8200
 408-252-8344 fax
 408-252-8202 cell
 305 N. Coast Hwy
 Laguna Beach, CA 92651
 949-715-4275

www.yesdesign.com

Signed & Sealed:
 Copyright © 2018 YSM Design, P.C. 02/11/2023 9:31:11 AM
 All Rights Reserved. No part of this document may be reproduced, stored in a retrieval system, or transmitted in any form or by any means, electronic, mechanical, photocopying, recording, or by any information storage and retrieval system, without the prior written permission of YSM Design, P.C. All other rights reserved.
 Scale as noted are only valid on the signed drawings.

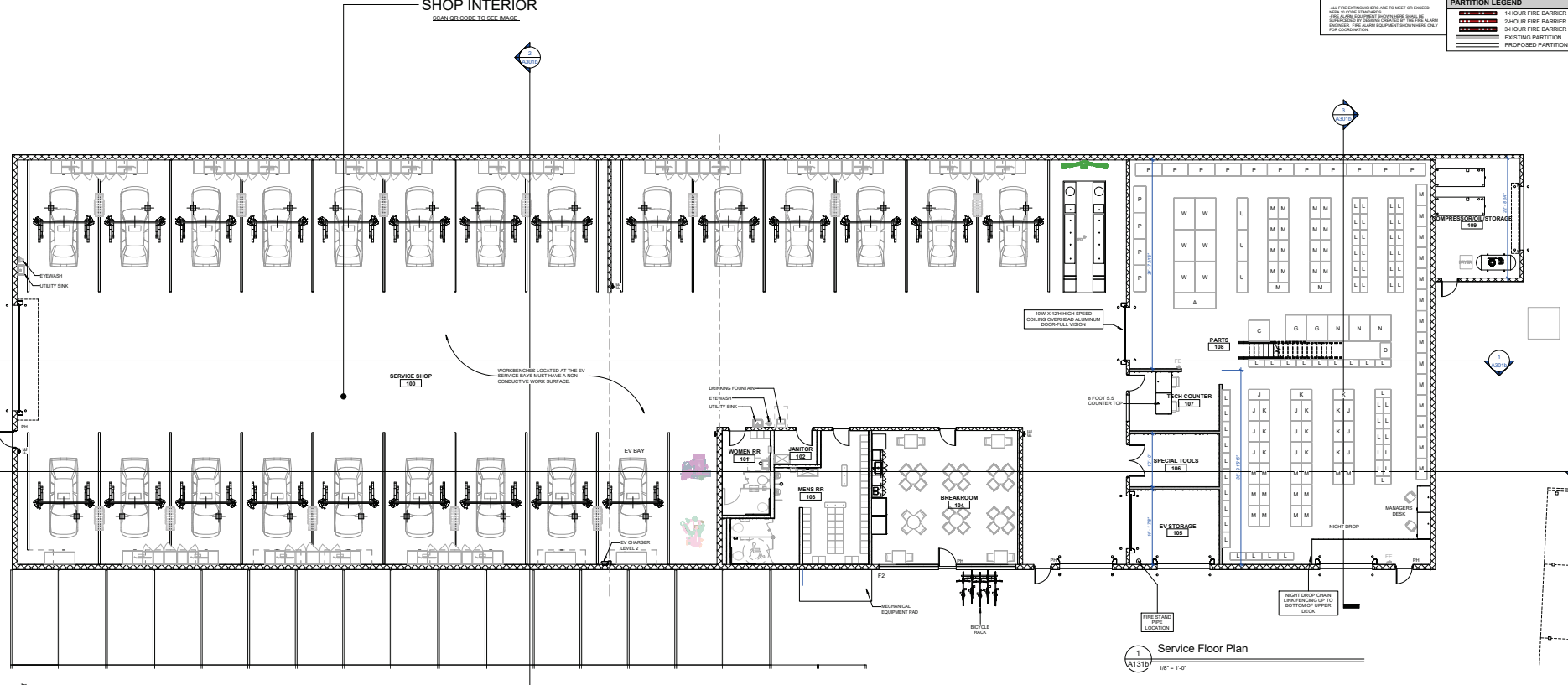
Rev	Date	Comments

BID SET
 Every Contractor and Subcontractor by submitting a bid for this project, declares that they have reviewed all aspects of this project, and that they have accepted the terms and conditions of the contract documents, including all addenda and industry standards, have indicated all work required to provide a complete project that meets all applicable building codes.

Regulations or ordinances are found. These should be submitted by the bidding General Contractor as a Request For Information before bid is due. These clarifications will be issued by all Bidders or Addendums. No clarifications will be given after the bid date for the bidding process unless they have been announced during the bidding process.

In the responsibility of ALL Bidders to become familiar with this project, and No Change Order Requests will be issued unless the Bidder has been notified in writing by the project owner.

No consideration will be given for Change Order Requests based on any of the following:
 A. Items not specifically indicated or indicated as an exception on the initial set.
 B. Items requiring clarification that was submitted to the project owner as a request for information during bidding.
 C. Items deemed to be industry standard for a particular trade.
 D. Items that can be reasonably inferred from contract documents.

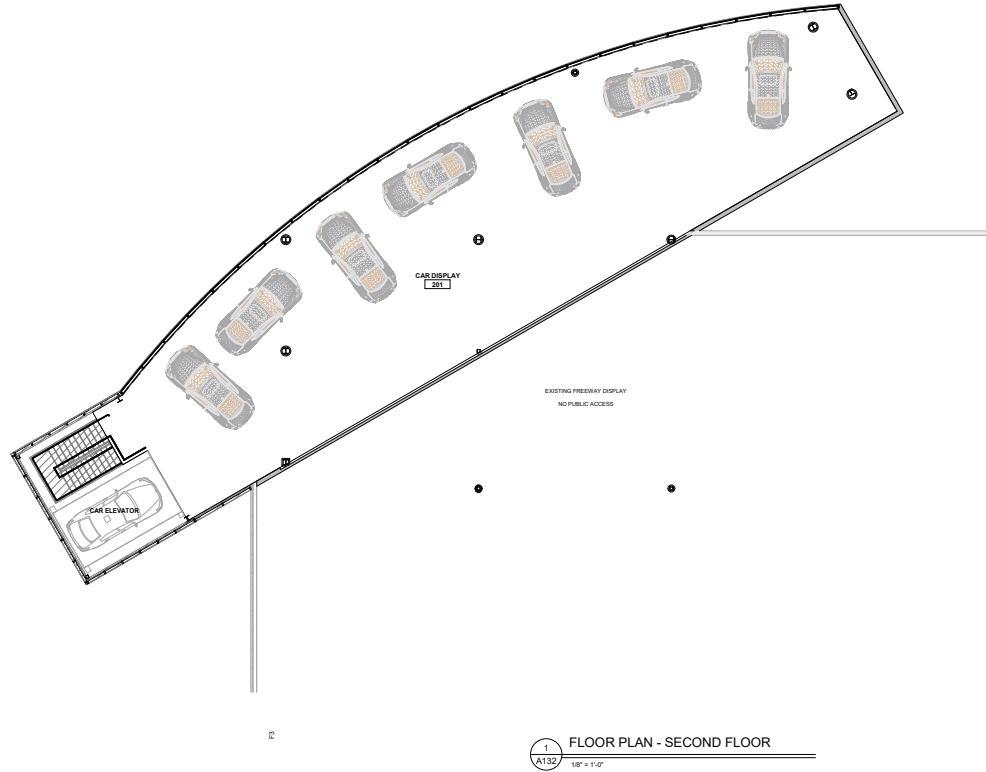


Client:
Brandon Steven Motors
 2205 E 223rd St, Carson, CA 90810

Project:
Hyundai Carson
 2205 E 223rd St, Carson, CA 90810

Project Number: 22096
 Drawn By: Author
 Checked By: Checker
 Approved By: Approver

Sheet Title:
FLOOR PLAN - FIRST FLOOR - SERVICE
 Sheet Number:
A131b



SCOPE OF WORK LEGEND

NOTE: THESE DESIGNATIONS ARE SPECIFIC TO EACH DRAWING SHEET. GC SHALL REVIEW SCOPE INDICATED ON EVERY SHEET.

- HATCH REPRESENTS AREAS OUT OF PROJECT SCOPE. NO WORK SHALL BE DONE IN THESE AREAS, U.S.O.
- IN-SCOPE WORK IS SPECIFICALLY DETAILED IN THE CONSTRUCTION DOCUMENTS.
- HATCH REPRESENTS AREAS OF LIMITED SCOPE. SEE NOTE BELOW.

LIMITED SCOPE INCLUDES WALL PAINT, WALL BASE, ELECTRICAL SWITCH COVER PLATES, COUPLERS, AND ALL ACCESSORIES.

REPAIR AND PREP EXISTING WALL BASE & ELECTRICAL SWITCH COVER PLATES AS REQUIRED. REPLACE DAMAGED SWITCHES AND GRILLES TO MATCH ADJACENT SPECIFICATION, AND CLEAN ALL SURFACES AND GRILLES SETBACKS TO REPAIR. THESE ITEMS MUST BE VISUALLY INSPECTED BY THE GC TO DETERMINE SCOPE AND PRICE FOR THE CLIENT AT THE TIME OF BID. THESE ITEMS ARE NOT SPECIFICALLY INDICATED IN THIS SET OF CONSTRUCTION DOCUMENTS.

PLAN NOTES

- SEE CODE PLAN FOR FIRE EXTINGUISHERS.
- SEE SLAB PLANS FOR SLAB EDGES AND ITS, BRIDGE, AND MASONRY WALLS THAT FORM SLAB EDGES.
- SEE SLAB PLAN FOR ACCESSIBLE ROUTE, CLEARANCES AND FLOOR ELEVATION CHANGES.
- SEE FLOOR PLAN FOR FURNITURE, FIXTURES, MILLWORK, AND EQUIPMENT.
- ALL DIMENSIONS ARE TO FACE OF CIVIL, FACE OF CMU, OR FACE OF STOREFRONT FRAMING UNLESS NOTED OTHERWISE.
- SEE FRESH PLAN WALL, TILE, AND WOOD WALL PANEL LOCATIONS.
- SEE PARTITION TYPE LEGEND FOR PARTITION DESIGN AND DESCRIPTION.
- PARTITION SYMBOLS ARE FOR ARCHITECTURAL COORDINATION. WHERE PROVIDED, REFER TO METAL STUD ENGINEERING DRAWINGS FOR STUD SIZES.
- TOP OF ELEVATION REPRESENTS TOP OF CIVIL FINISH. STUD FRAMING MAY CONTINUE TO DECK, OR BE BRIDGED TO DECK AS REQUIRED BY ENGINEERED STUD DRAWINGS. GC SHALL FIELD COORDINATE WITH OTHER BUILDING SYSTEMS.

METAL STUD ENGINEERING

ALL METAL STUD CONSTRUCTION SHALL BE DESIGNED AND SEALED BY AN ENGINEER LICENSED IN THE JURISDICTION WHERE THE PROJECT IS LOCATED. IF AN ENGINEER HAS REVIEWED THE DRAWINGS AND CALCULATIONS ARE NOT PROVIDED BY THE DESIGN TEAM AS PART OF THE CONTRACT DOCUMENTS, THE GC AND ITS SUBCONTRACTOR SHALL PROVIDE STUD ENGINEERING DRAWINGS AND CALCULATIONS, SEALED BY AN ENGINEER, SUBMITTED TO THE DESIGN TEAM FOR REVIEW, AND SUBMITTED TO THE LOCAL AUTHORITY HAVING JURISDICTION AS REQUIRED.

SEE STRUCTURAL DRAWINGS, STUD DRAWINGS, AND SPECIFICATIONS FOR DESIGN CRITERIA.

NOT ALL STUD FRAMING MAY BE SHOWN. GC SHALL PROVIDE STUD FRAMING AT ALL LOCATIONS WHERE BRACING AND PARTIES ARE SHOWN THAT REQUIRE SUPPORT.

- THESE ITEMS, INCLUDING MEMBER SIZES, SPACING, AND CONNECTIONS, SHALL BE ENGINEERED:
 - A) ALL INTERIOR FRAMING.
 - B) INTERIOR AND EXTERIOR CONNECTIONS WHERE STUDS ARE HUNG FROM THE DECK OR STRUCTURE ABOVE.
 - C) INTERIOR FRAMING USED AS SUPPORT FOR ADDITIONAL PARTITIONS.
 - D) INTERIOR PARTITIONS TO DECK, OFF IN HEIGHT, OR TALLER.
- THESE ITEMS ARE THE SOLE RESPONSIBILITY OF THE GENERAL CONTRACTOR AND SUBCONTRACTOR AND DO NOT REQUIRE SEALED ENGINEERING SUBJECT TO LOCAL AUTHORITY REQUIREMENTS:
 - A) INTERIOR PARTITIONS LESS THAN 10 FT IN HEIGHT.
 - B) INTERIOR PARTITION CORROBORATING TO TOP OF FLOOR MOUNTED INTERIOR PARTITIONS.
 - C) CONNECTIONS TO STRUCTURE ABOVE AND TO TOP OF FLOOR MOUNTED INTERIOR PARTITIONS.
- INTERIOR PARTITIONS TO RECEIVE TILE FINISH SHALL BE ENGINEERED FOR COLLECTION LOAD PER AND TAB 11 AS RECOMMENDED BY THE TCM. STUD SPACING AT INTERIOR TILE WALLS SHALL BE 16" O.C.
- OVERHEAD CONNECTIONS OF HANGING STUD FRAMING SHALL NOT USE TENSION DRIVEN PARTNERS UNLESS APPROVED BY THE STUD ENGINEER OR PROJECT ENGINEER OF RECORD.
- DEFLECTION: REFER TO STRUCTURAL AND/OR STUD ENGINEERING DRAWINGS. IF NOT SHOWN, LIMIT DEFLECTION TO L/500 PER ALLOWED PER ANSI/ASCE 7-10, AND PER WIND LOADINGS OF BEST AVAILABLE BUILDING.
- UNLESS OTHERWISE INDICATED BY ENGINEERING DESIGN, STUD SPACING MAY BE 24" O.C.
- JURISDICTIONS REQUIRING NOA OR OTHER APPROVALS FOR SYSTEMS INCLUDING, BUT NOT LIMITED TO, EFC, STUDS ON WALL, WALL MOUNTED PARTNERS, PANEL BASE MOUNTING RELIEFS, THE NOA DESIGN WILL GOVERN. PLEASE REFER TO NOA NUMBERS SHOWN ELSEWHERE IN THESE DRAWINGS.

PARTITION SYMBOL LEGEND

PARTITION TYPE 10'-0" ELEVATION TO TOP OF CIVIL FINISH

PARTITION TYPE 10'-0" ELEVATION TO TOP OF CIVIL FINISH

PARTITION TYPE 10'-0" ELEVATION TO TOP OF CIVIL FINISH

PARTITION TYPE 10'-0" ELEVATION TO TOP OF CIVIL FINISH

PARTITION TYPE 10'-0" ELEVATION TO TOP OF CIVIL FINISH

PARTITION TYPE 10'-0" ELEVATION TO TOP OF CIVIL FINISH

PARTITION TYPE 10'-0" ELEVATION TO TOP OF CIVIL FINISH

PARTITION TYPE 10'-0" ELEVATION TO TOP OF CIVIL FINISH

PARTITION LEGEND

1-HOUR FIRE BARRIER

2-HOUR FIRE BARRIER

3-HOUR FIRE BARRIER

EXISTING PARTITION

PROPOSED PARTITION

FIRE EQUIPMENT LEGEND

SURFACE MOUNTED FIRE EXTINGUISHER

RECESSED FIRE EXTINGUISHER CABINET

FIRE ALARM CONTROL PANEL

FIRE ALARM ANNUNCIATOR PANEL

ALL FIRE EXTINGUISHERS ARE TO MEET OR EXCEED 2014 NFPA 10 REQUIREMENTS. ALL FIRE EXTINGUISHERS SHALL BE SUBSTITUTED BY DISCONTINUED BY THE FIRE ALARM ENGINEER. SEE ALARM AND CONTROL SYSTEMS FOR ONLY.

GRIDLINE TYPE LEGEND

NEW GRIDLINE

EXISTING GRIDLINE

MASONRY GRIDLINE

"N" - NEW WORK SCOPE

"EX" - EXISTING CONSTRUCTION

ysm DESIGN
architecture+planning

1300 Ellsworth Industrial Blvd
Suite A-100
Atlanta, GA 30318
404-555-8394 fax
404-238-8522 cell

365 N. Coast Hwy
Laguna Beach, CA 92651
949-751-4275

www.ysmdesign.com

RELEASED 11/21/2023 9:18:38 AM
PROGRESS PRINT - DO NOT
USE FOR CONTRACT PRICING

Signed & Sealed:

Copyright © 2023 YSM Design, P.C. 12/11/2023 09:18:38 AM
All rights reserved. Reproduction, storage, distribution, or use of any part of this document without the written consent of YSM Design, P.C. is prohibited. All other rights reserved.

Rev	Date	Comments

CAD FILES

A release from must accompany the distribution of cad or Revit files from YSM Design PC and must be reviewed and approved prior to use by the GC. The user of the files must agree to the terms of the Release Form. We shall hold no liability or responsibility of the user.

The user of this CAD or Revit file agrees to obtain, indemnify, and hold YSM Design PC harmless from any damage, liability, or cost, including attorney's fees and cost of defense, arising from any use, reuse or modification of the files, specification or other document. This is a personal or entity which accepts or obtains the plans, specifications and/or documents from them or through the user.

YSM Design PC makes no warranties, either expressed or implied, of merchantability or fitness for any particular purpose. In its entirety YSM Design PC is liable for any loss of profit or any damages resulting from the documents. YSM Design PC may substitute third party or other documents without notice that the user acknowledges and agrees that the user releases, defends, indemnifies and holds YSM Design PC harmless from any damage, liability, or cost, including attorney's fees and cost of defense, arising from any use, reuse or modification of the files, specification and/or documents. This is a personal or entity which accepts or obtains the plans, specifications and/or documents from them or through the user.

Client:
BRANDON STEVEN MOTORS

3974 S. FIGUEROA ST. LOS ANGELES, CA 90037

Project:
Hyundai Carson

2205 E 223rd St, Carson, CA 90810

Project Number: 22096
Drawn By: Author
Checked By: Checker
Approved By: Approver

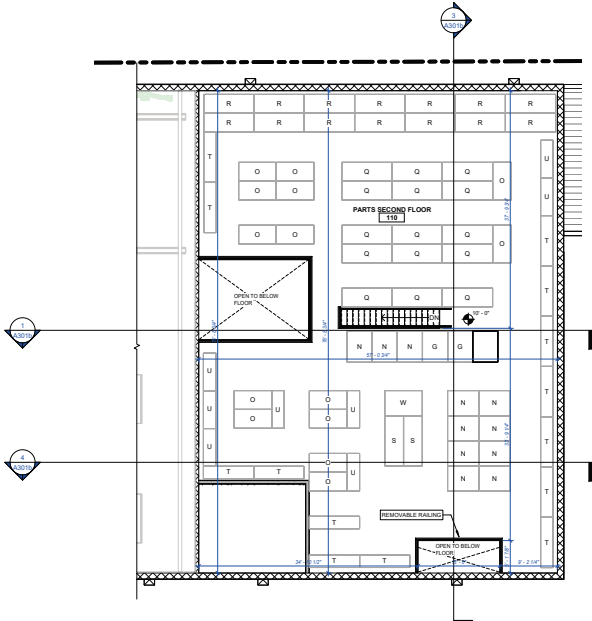
Sheet Title:
FLOOR PLAN - SECOND FLOOR-SHOWROOM
Sheet Number:
A132

GRIDLINE TYPE LEGEND		SCOPE OF WORK LEGEND	
NEW GRIDLINE		NOTE: THESE DESIGNATIONS ARE SPECIFIC TO EACH DRAWING SHEET. GC SHALL REVIEW SCOPE INDICATED ON EVERY SHEET.	
EXISTING GRIDLINE		HATCH REPRESENTS AREAS OUT OF PROJECT SCOPE. NO WORK SHALL BE DONE IN THESE AREAS. UNDO.	
F.O. MASONRY GRIDLINE		IN-SCOPE WORK IS SPECIFICALLY DETAILED IN THE CONSTRUCTION DOCUMENTS.	
Nx	"N" - NEW WORK SCOPE	HATCH REPRESENTS AREAS OF LIMITED SCOPE. SEE NOTE BELOW.	
EX	"E" - EXISTING CONSTRUCTION		

- SEE CODE PLAN FOR FIRE EXTINGUISHERS.
- SEE CODE PLAN FOR GLAZ EDGES, INSETS, MEMBS, AND MASONRY WALLS THAT FORM GLAZ EDGES.
- SEE CODE PLAN FOR SCISSOR ROOF, CLEARANCES AND FLOOR ELEVATION CHANGES.
- SEE FLEX PLAN FOR FURNITURE, FIXTURES, MILLWORK, AND EQUIPMENT.
- ALL DIMENSIONS ARE TO FACE OF CURT. PANEL OR FACE OF STOREFRONT FRAMING UNLESS NOTED OTHERWISE.
- SEE FLEX PLAN FOR WALL, TILE AND WOOD WALL PANEL LOCATIONS.
- SEE PARTITION TYPE LEGEND FOR PARTITION SECTION AND DESCRIPTION.
- PARTITIONS SHOWN ARE FOR ARCHITECTURAL COORDINATION. WHERE PROVIDED, REFER TO METAL STUD ENGINEERING DRAWINGS FOR FLOOR FRAMES.
- TOP ELEVATION REPRESENTS TOP OF JOIP FRAM. STUD FRAMING MAY CONTINUE TO DECK, OR BE BRANCHED TO DECK, AS INDICATED BY ENGINEER'S STUD DRAWING. GC SHALL FIELD COORDINATE WITH OTHER BUILDING SYSTEMS.

FIRE EQUIPMENT LEGEND		PARTITION SYMBOL LEGEND	
	SM-SURFACE MOUNTED FIRE EXTINGUISHER		1-HOUR FIRE BARRIER
	REC-RECESSED OR SEMI-RECESSED FIRE EXTINGUISHER CABINET		2-HOUR FIRE BARRIER
	FAC-FIRE ALARM CONTROL PANEL		EXISTING PARTITION
	FAP-FIRE ALARM ANNUNCIATOR PANEL		PROPOSED PARTITION
	PE-FIRE EXTINGUISHER IN PATCH OF EGRESS		

Signed & Sealed:
 Copyright © 2019 YSM Design, P.C. 12/11/2023 9:31:12 AM
 All rights reserved. No part of this document may be reproduced or transmitted in any form or by any means, including photocopying, recording, or by any information storage and retrieval system, without the prior written permission of YSM Design, P.C.



1 FLOOR PLAN - SECOND FLOOR
 A132b 1/8" = 1'-0"

Rev	Date	Comments

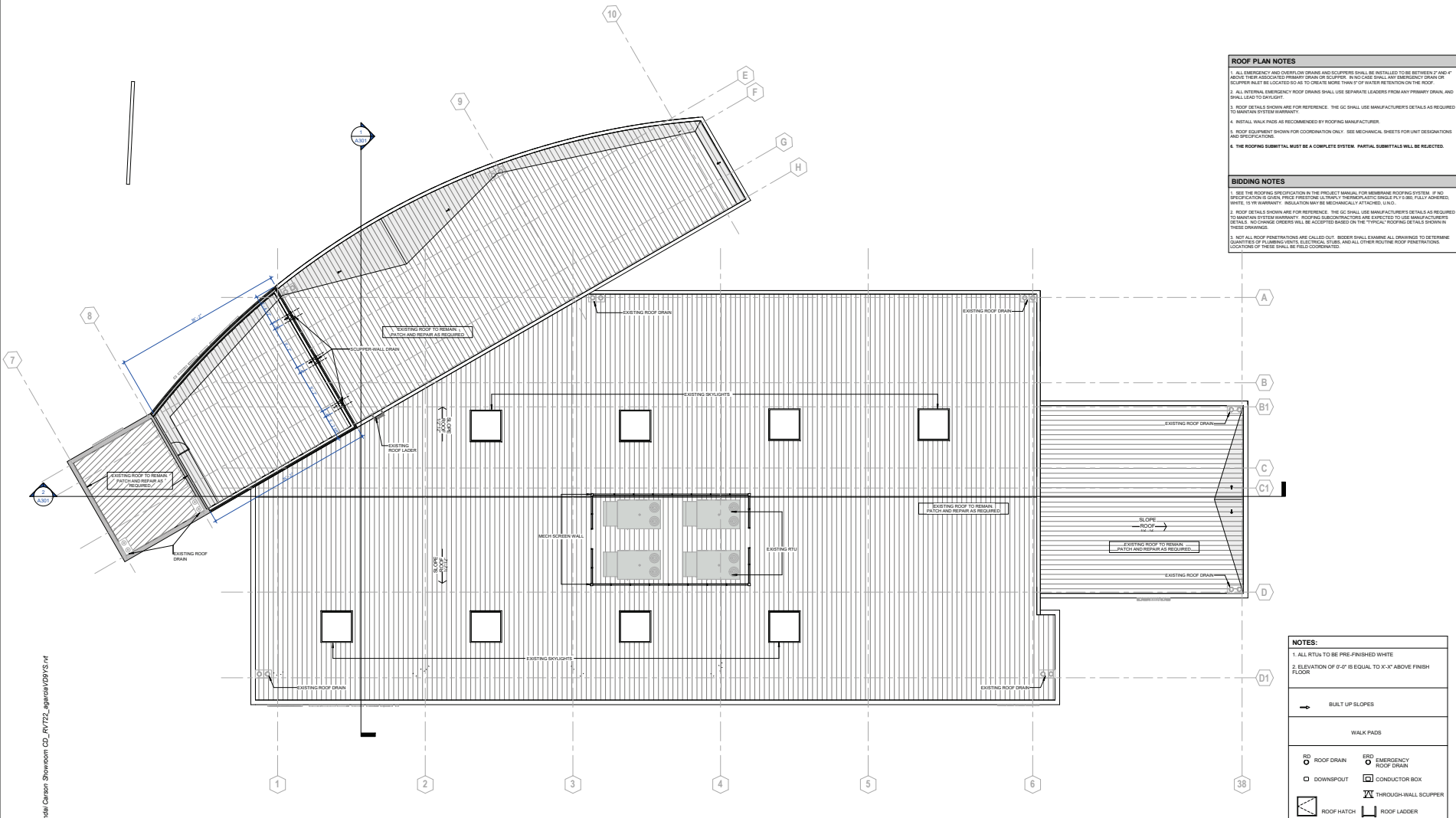
BID SET
 Every Contractor and Subcontractor by submitting a bid for this project, declares that they have reviewed all aspects of this project, and that they understand the scope and nature of the project, and that they have agreed to provide a complete proposal that meets all applicable building codes.

If questions or discrepancies are found, these should be submitted by the Bidding Contractor as a Request For Information before bid is due. These clarifications will be issued to all Bidders in Addressed No consideration will be given after the Bid date for issues that should clearly have been answered during the Bidding Period.

It is the responsibility of ALL Bidders to become familiar with this project site. No Change Order Requests will be considered based on information readily accessible from the project site.

No consideration will be given for Change Order Requests based on any of the following:
 1. An exception on the initial bid.
 2. Items requiring clarification that was submitted by Auction as a request for information during bidding.
 3. Items claimed to be readily identified by a particular Bidder.
 4. Items that can be reasonably inferred from contract documents.

Client:	Brandon Steven Motors 2205 E 223rd St, Carson, CA 90810
Project:	Hyundai Carson 2205 E 223rd St, Carson, CA 90810
Project Number:	22096
Drawn By:	Author
Checked By:	Checker
Approved By:	Approver
Sheet Title:	FLOOR PLAN - SECOND FLOOR - SERVICE Sheet Number: A132b



ROOF PLAN NOTES

1. ALL EMERGENCY AND OVER-DRAIN DRAINS AND SCUPPERS SHALL BE INSTALLED TO BE BETWEEN 2" AND 4" ABOVE THEIR ASSOCIATED PRIMARY DRAIN OR SCUPPER. IN NO CASE SHALL ANY EMERGENCY DRAIN OR SCUPPER BE LOCATED SO AS TO CREATE MORE THAN 2" OF WATER RETENTION ON THE ROOF.
2. ALL INTERNAL EMERGENCY ROOF DRAINS SHALL USE SEPARATE LEADERS FROM ANY PRIMARY DRAIN AND SHALL LEAD TO GROUND.
3. ROOF DETAILS SHOWN ARE FOR REFERENCE. THE GC SHALL USE MANUFACTURER'S DETAILS AS REQUIRED TO MATCH SYSTEM HURDLES.
4. INSTALL WALK PADS AS RECOMMENDED BY ROOFING MANUFACTURER.
5. ROOF EQUIPMENT SHOWN FOR COORDINATION ONLY. SEE MECHANICAL SHEETS FOR UNIT DESIGNATIONS AND SPECIFICATIONS.
6. THE ROOFING SUBMITTAL MUST BE A COMPLETE SYSTEM. PARTIAL SUBMITTALS WILL BE REJECTED.

BIDDING NOTES

1. SEE THE ROOFING SPECIFICATION IN THE PROJECT MANUAL FOR MEMBRANE ROOFING SYSTEM. IF NO SPECIFICATION IS GIVEN, PRICE INCLUDING (1) THREE" PLYMETHACRYLATE GELCO PLIE, (2) 1/2" FULLY ADHESED WHITE 15 YR WARRANTY INSULATION MAY BE MECHANICALLY ATTACHED, U.N.D.
2. ROOF DETAILS SHOWN ARE FOR REFERENCE. THE GC SHALL USE MANUFACTURER'S DETAILS AS REQUIRED TO MATCH AND SYSTEM HURDLES. ROOFING MANUFACTURER'S DETAILS ARE SUBJECT TO USE MANUFACTURER'S DETAILS. NO OTHER ORDERS WILL BE BASED ON THE TYPICAL ROOFING DETAILS SHOWN IN THESE DRAWINGS.
3. NOT ALL ROOF PENETRATIONS ARE CALLED OUT. BIDDER SHALL EXAMINE ALL DRAWINGS TO DETERMINE QUANTITIES OF FLASHING, WEBS, ELECTRICAL STUDS, AND ALL OTHER ROOFING ROOF PENETRATIONS. LOCATIONS OF THESE SHALL BE FIELD COORDINATED.

Signed & Sealed:

Copyright © YSM Design, P.C. 02/12/2023 9:18:00 AM
All rights reserved. Reproduction, storage, retrieval, transmission, or other use without the express written permission of YSM Design, P.C. is prohibited. This document is the property of YSM Design, P.C. and is not to be distributed, copied, or otherwise used without the express written permission of YSM Design, P.C.

Rev	Date	Comments

CAD FILES

A submittal must accompany the distribution of and/or Revit files from YSM Design PC and must be emailed and attached prior to use by the GC. The user of the Revit files is not bound by the terms of the Release form, as stated in the signature of the user of the Revit files.

The user of this CAD or Revit file agrees to indemnify, defend, and hold YSM Design PC harmless from any damage, liability, or cost, including all attorney's fees and cost of defense, arising from any use, reuse, or modification of the files, specifications and/or drawings. This is only person or entity which accepts or obtains the plans, specifications and/or drawings from YSM Design PC through the user.

YSM Design PC makes no warranties, either expressed or implied, of merchantability or fitness for any particular purpose. In no event shall YSM Design PC be liable for any loss of profit or any damages resulting from the documents. YSM Design PC may substitute the content of these documents without notice and only the user releases YSM Design PC from any liability. The user of these documents, including all attorney's fees and cost of defense, for any claims arising as a result from use or distribution of these documents, intentional or otherwise.

NOTES:

1. ALL RTUs TO BE PRE-FINISHED WHITE
2. ELEVATION OF 0'-0" IS EQUAL TO X'-X" ABOVE FINISH FLOOR

BUILT UP SLOPES

WALK PADS

RD	ROOF DRAIN	ERD	EMERGENCY ROOF DRAIN
DS	DOWNSPOUT	CB	CONDUCTOR BOX
RH	ROOF HATCH	WL	THROUGH-WALL SCUPPER
RL	ROOF LADDER		

SCOPE OF WORK LEGEND

NOTE: THESE DESIGNATIONS ARE SPECIFIC TO EACH DRAWING SHEET. GC SHALL REVIEW SCOPE INDICATED ON EVERY SHEET.

REMAIN AND REPAIR EXISTING CONSTRUCTION AS REQUIRED FROM TO MATCHING TO. USE NEW CONDITION. REPAIR/REPLACE WALL BASE & ELECTRICAL DEVICE COVER PLATES AS REQUIRED. REPLACE DAMAGED OFFSETTERS AND GRILLES TO MATCH ADJACENT SPECIFICATION AND CLEAN ALL OFFSETTERS AND GRILLES DETERMINED TO REMAIN. THESE ITEMS MUST BE VISIBLY INSPECTED BY THE GC TO DETERMINE SCOPE AND PRICE FOR THE CLIENT AT THE TIME OF BIL. THESE ITEMS ARE NOT SPECIFICALLY INDICATED IN THIS SET OF CONSTRUCTION DOCUMENTS.

1 ROOF
1/8" = 1'-0"



Client:

BRANDON STEVEN MOTORS

3974 S. FIGUEROA ST. LOS ANGELES, CA. 90037

Project:

Hyundai Carson

2205 E 223rd St, Carson, CA 90810

Project Number: 22096
 Drawn By: Author
 Checked By: Checker
 Approved By: Approver

Sheet Title:

ROOF PLAN

Sheet Number:

A191

ROOF PLAN NOTES

1. ALL EMERGENCY AND OVERFLOW DRAINS AND SCUPPERS SHALL BE INSTALLED TO BE BETWEEN 2" AND 4" ABOVE THEIR ASSOCIATED PRIMARY DRAIN OR SCUPPER. IN NO CASE SHALL ANY EMERGENCY DRAIN OR SCUPPER INLET BE LOCATED SO AS TO CREATE MORE THAN 2" OF WATER RETENTION ON THE ROOF.
2. ALL INTERNAL EMERGENCY ROOF DRAINS SHALL USE SEPARATE LEADERS FROM ANY PRIMARY DRAIN AND SHALL LEAD TO OUTSIGHT.
3. ROOF DETAILS SHOWN ARE FOR REFERENCE. THE GC SHALL USE MANUFACTURER'S DETAILS AS REQUIRED TO MATCH SYSTEM HORIZONTALS.
4. INSTALL WALK PADS AS RECOMMENDED BY ROOFING MANUFACTURER.
5. ROOF EQUIPMENT SHOWN FOR COORDINATION ONLY. SEE MECHANICAL SHEETS FOR UNIT DESIGNATION AND SPECIFICATIONS.
6. THE ROOFING SUBMITTAL MUST BE A COMPLETE SYSTEM. PARTIAL SUBMITTALS WILL BE REJECTED.

BIDDING NOTES

1. SEE THE ROOFING SPECIFICATION IN THE PROJECT MANUAL FOR MEMBRANE ROOFING SYSTEM. IF NO SPECIFICATION IS GIVEN, PRICE FURNISHING 10 MILY. TERMAK-LASTIC SINGLE PLY IS TO BE FULLY ADHERED, WHITE, 15 YR WARRANTY. INSULATION MAY BE MECHANICALLY ATTACHED, U.N.D.
2. ROOF DETAILS SHOWN ARE FOR REFERENCE. THE GC SHALL USE MANUFACTURER'S DETAILS AS REQUIRED TO MATCH SYSTEM HORIZONTALS. ROOF PAD CONNECTIONS ARE SUBJECT TO USE MANUFACTURER'S DETAILS. NO OTHER SYSTEMS WILL BE ACCEPTED UNLESS OTHERWISE TYPICAL. ROOFING DETAILS SHOWN IN THESE DRAWINGS.
3. NOT ALL ROOF PENETRATIONS ARE CALLED OUT. BIDDERS SHALL EXAMINE ALL DRAWINGS TO DETERMINE QUANTITIES OF FLASHING DETAILS, ELECTRICAL STUDS, AND ALL OTHER ROOFING ROOF PENETRATIONS. LOCATIONS OF THESE SHALL BE FIELD COORDINATED.

Signed & Sealed:

Date: _____

BID SET

Every Contractor and Subcontractor by submitting a bid for this project, declares that they have reviewed all drawings of this project, and that they understand the scope and extent of the work to be performed, and that they agree to provide a complete project that meets all applicable building codes.

Specifications or discrepancies are found, these should be submitted by the bidding General Contractor as a Request For Information before bid is due. These clarifications will be issued to all Bidders in Addition. No consideration will be given after the bid date for issues that could clearly have been assessed during the bidding period.

It is the responsibility of ALL Bidders to become familiar with this project site. No Change Order Requests will be considered based on information readily ascertainable from the project site.

No consideration will be given for Change Order Requests based on any part of the drawings that are not specifically indicated as an exception on the initial set.

2. Items requiring clarification but not submitted by Architect are to be resolved by the contractor. A form that can be reasonably inferred from contract documents.

NOTES:

1. ALL RTUs TO BE PRE-FINISHED WHITE
2. ELEVATION OF 0'-0" IS EQUAL TO X'-X" ABOVE FINISH FLOOR

NOTES:

1. ALL RTUs TO BE PRE-FINISHED WHITE
2. ELEVATION OF 0'-0" IS EQUAL TO X'-X" ABOVE FINISH FLOOR

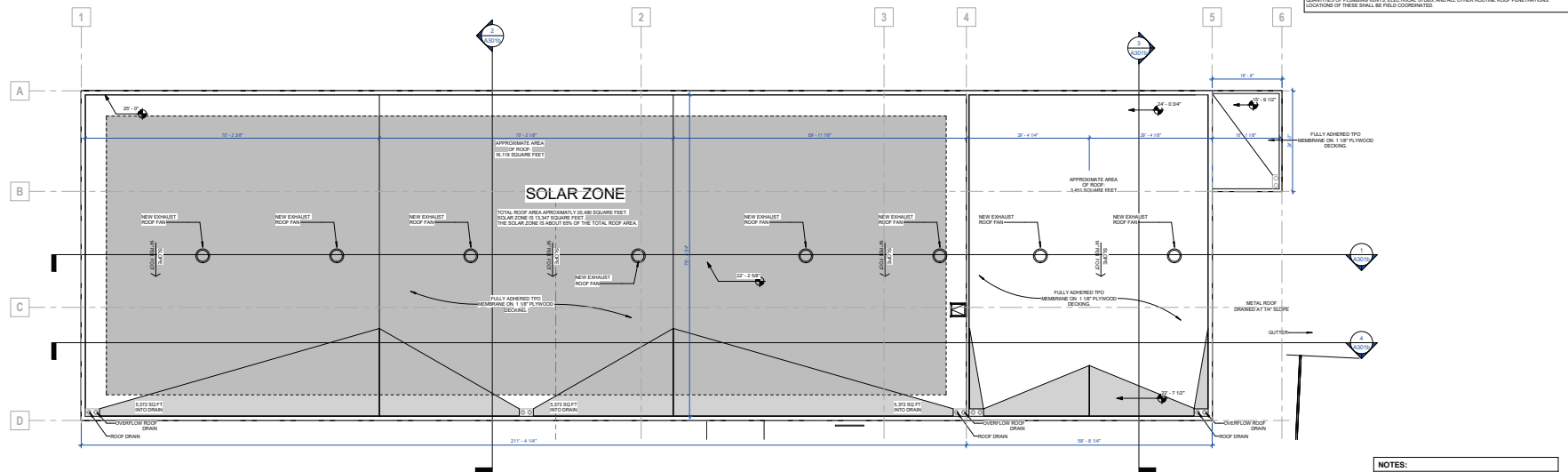
Client:
Brandon Steven Motors
2205 E 223rd St, Carson, CA 90810

Project:
Hyundai Carson
2205 E 223rd St, Carson, CA 90810

Project Number: 22096
Drawn By: Author
Checked By: Checker
Approved By: Approver

Sheet Title:
ROOF PLAN

Sheet Number:
A191



1 ROOF PLAN
302' x 140'

NOTES:

1. ALL RTUs TO BE PRE-FINISHED WHITE
2. ELEVATION OF 0'-0" IS EQUAL TO X'-X" ABOVE FINISH FLOOR

SCOPE OF WORK LEGEND

NOTE: THESE DESIGNATIONS ARE SPECIFIC TO EACH DRAWING SHEET. GC SHALL REVIEW SCOPE INDICATED ON EVERY SHEET.

□ HATCH REPRESENTS AREAS OUT OF PROJECT SCOPE. NO WORK SHALL BE DONE IN THESE AREAS, U.N.D.

□ IN SCOPE WORK IS SPECIFICALLY DETAILED IN THE CONSTRUCTION DOCUMENTS.

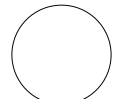
□ HATCH REPRESENTS AREAS OF LIMITED SCOPE. SEE NOTE BELOW.

LIMITED SCOPE INCLUDES WALL FAN, WALL BAG, ELECTRICAL DEVICE COVER PLATES & SCUPPERS, GRILLS, AND BRISURES.

REMAIN AND REPAIR EXISTING CONSTRUCTION IS REQUIRED PRIOR TO INSTALLING THE NEW CONSTRUCTION. REPAIR/REPLACE WALL BASE & ELECTRICAL DEVICE COVER PLATES AS REQUIRED. REPLACE DAMAGED SCUPPERS AND GRILLS TO MATCH ADJACENT SPECIFICATION AND CLEAN ALL OFFSHERS AND GRILLS DETERMINED TO REMAIN. THESE ITEMS MUST BE VISIBLY INSPECTED BY THE GC TO DETERMINE SCOPE AND PRICE FOR THE CLIENT AT THE TIME OF BIL. THESE ITEMS ARE NOT SPECIFICALLY INDICATED IN THIS SET OF CONSTRUCTION DOCUMENTS.

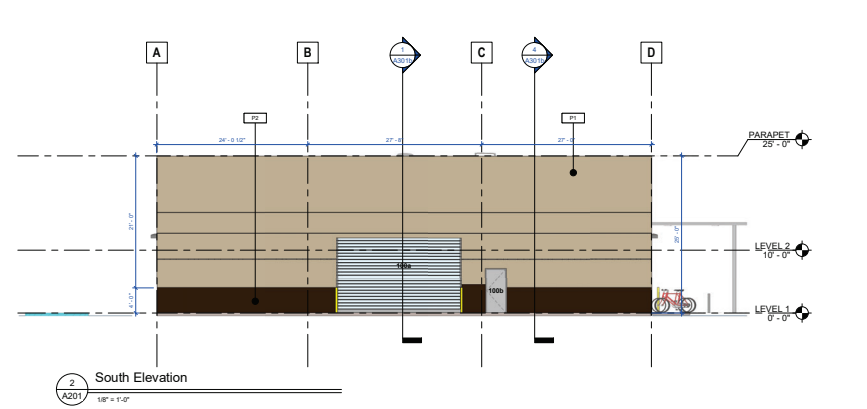
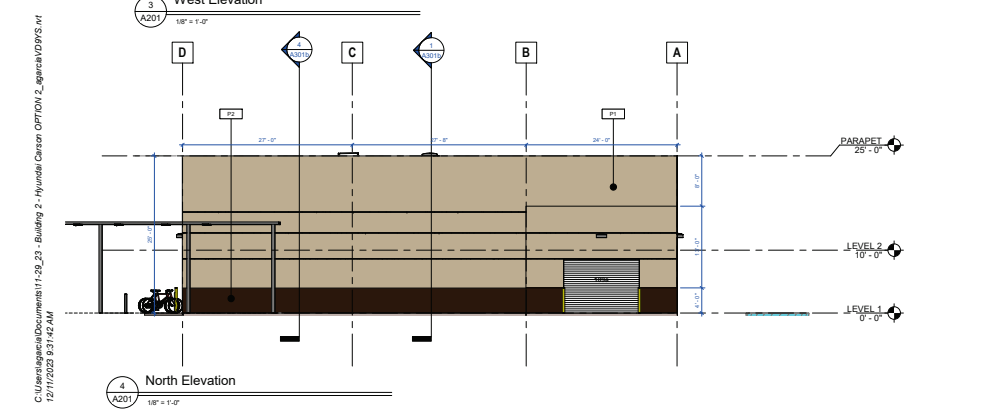
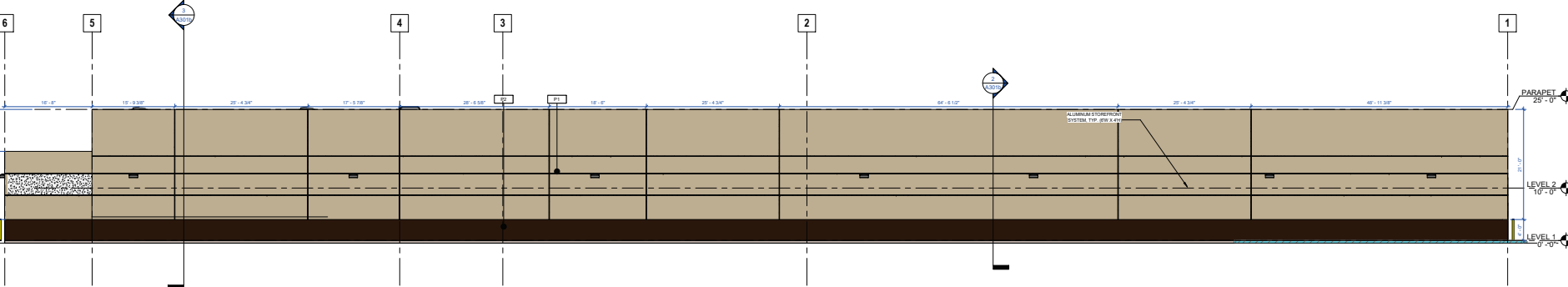
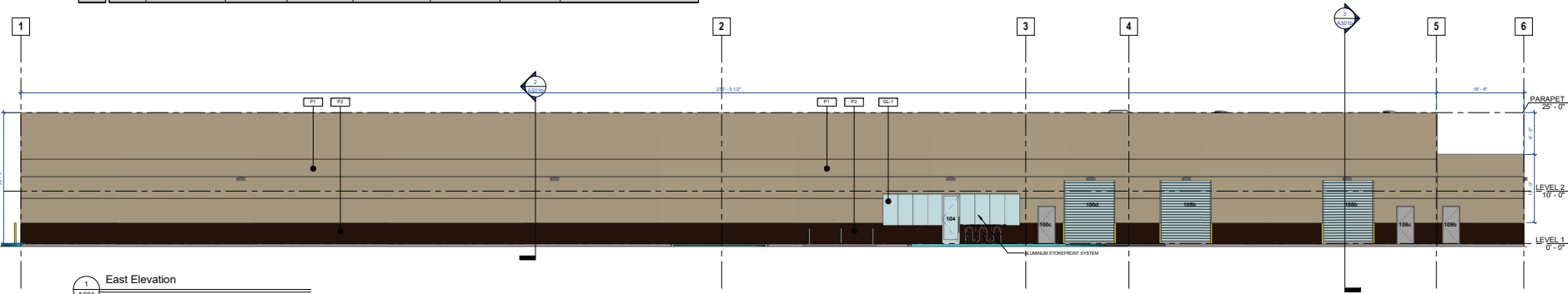


EXTERIOR FINISHES CARSON HYUNDAI								
MARK	MATERIAL	MANUFACTURER	NUMBER/PRODUCT LINE	COLOR / PATTERN / NAME	SIZE / TYPE / SHEEN	REMARKS	CONTACTS	
LIVE MATERIALS AND FINISHES	ACM-1	SHAPED SKY METAL FASCI	HMA SURVEY VENDOR	PROPRIETARY PRODUCT LINE COLOR	(SEE NOTE 1)	FASCI AT SHED/ROOF/RAILS/ SERVICE DRIVE	CONTACT: JODY MUNSEY AT HMA SURVEY VENDOR 800.692.1424 X.3218	
				COMPLETE RAIN SCREEN ACM SYSTEM BLACK WITH BRN SUPERSLY PANEL OVERLAY BRONZE			NOTES: 1. HMA HAS ESTABLISHED A NATIONAL VENDOR FOR THESE PRODUCTS. ALL SIMILAR SKY ELEMENTS TO BE CRAWFORD AND INSTALLED BY HMA SURVEY VENDOR.	
GLAZING SYSTEMS	GL-1	GLAZING SYSTEM EXTERIOR CURTAIN WALL	KAWNEER 1600 WALL SYSTEM 2	FRAMELESS STRUCTURAL GLAZING	TIN NONE MULLIONS: STRUCTURAL GLASS 1/2"	SERVICE	CONTACT: KAWNEER AT 770-449-5555	
PAINTS	P-1	PAINT EXTERIOR	SHERWIN WILLIAMS	COLOR: ANTLER VELVET #SW7111 EXTERIOR FINISH: SEMI-GLOSS		EXTERIOR WALLS DOORS: FV400S	CONTACT: SHERWIN WILLIAMS AT 800-474-3734	
	P-2	PAINT EXTERIOR	SHERWIN WILLIAMS	COLOR: KAFFEE EXTERIOR FINISH: SEMI-GLOSS		4" O" BASE AT EXTERIOR WALLS OF SERVICE PARTS		



Signed & Sealed:

Rev	Date	Comments



BID SET
Every Contractor and Subcontractor by submitting a bid for this project, declares that they have reviewed all aspects of this project, and they (Contractor/Engineer and architect) have read and understand all drawings, specifications, and all other documents, and they agree to comply with all applicable building codes.

If questions or discrepancies are found, these should be submitted by the bidding Contractor to the architect as a Request For Information before bid is due. These clarifications will be issued to all Bidders in Addition. No consideration will be given after the bid date for issues that could clearly have been answered during the Bidding Period.

It is the responsibility of ALL Bidders to become familiar with this project site. No Change Order Requests will be considered based on information readily ascertainable from the project site.

No consideration will be given for Change Order Requests based on any of the following:
 1. Items not clearly identified and not submitted to Architect as a request for information during bidding.
 2. Items assumed to be readily identified by a particular Bidder.
 3. Items that can be reasonably inferred from contract documents.

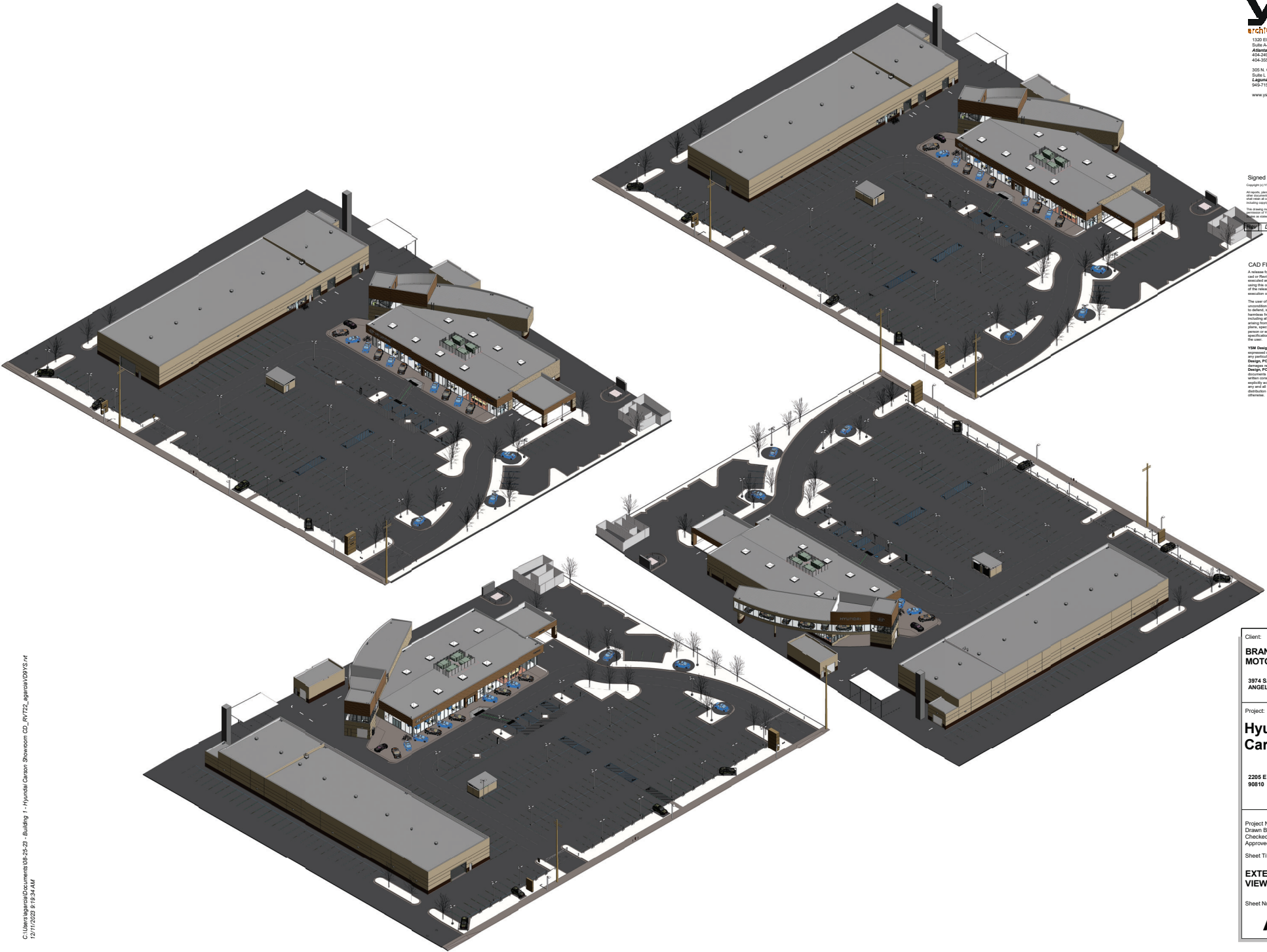
Client:
Brandon Steven Motors
2205 E 223rd St, Carson, CA 90810

Project:
Hyundai Carson
2205 E 223rd St, Carson, CA 90810

Project Number: 22096
 Drawn By: Author
 Checked By: Checker
 Approved By: Approver

Sheet Title:
BUILDING ELEVATIONS

Sheet Number:
A201



Signed & Sealed:

Copyright © YSM Design, P.C. 02/12/2023 9:19 AM
All rights reserved. No part of this document may be reproduced, stored in a retrieval system, or transmitted in any form or by any means, electronic, mechanical, photocopying, recording, or by any information storage and retrieval system, without the prior written permission of YSM Design, P.C. All other content and design remain the property of YSM Design, P.C.

Rev	Date	Comments

CAD FILES

A release form must accompany the distribution of cad or Revit files from YSM Design PC and must be executed and signed prior to use of the files. The release form is located in the 'release' sub-directory of the release form. The user agrees to the terms of the release form. The user agrees to the terms of the release form.

The user of this CAD or Revit file agrees to release, in whole or in part, to third parties, to clients, indirectly, and hold YSM Design PC harmless from any damage, liability, or cost, including all attorney's fees and cost of defense, arising from any use, reuse or modification of the files, specifications and/or drawings. This is only person or entity which accepts or obtains the plans, specifications and/or drawings from us or through the user.

YSM Design, PC makes no warranty, either expressed or implied, of merchantability or fitness for any particular purpose. In no event shall YSM Design, PC be liable for any loss of profit or any damages resulting from the use of these documents. YSM Design, PC may substitute the use of these documents with any other documents without notice. The user of these documents, whether by electronic or physical means, expressly accepts full sole risk and responsibility for any and all claims arising as a result from use or distribution of these documents, intentional or otherwise.

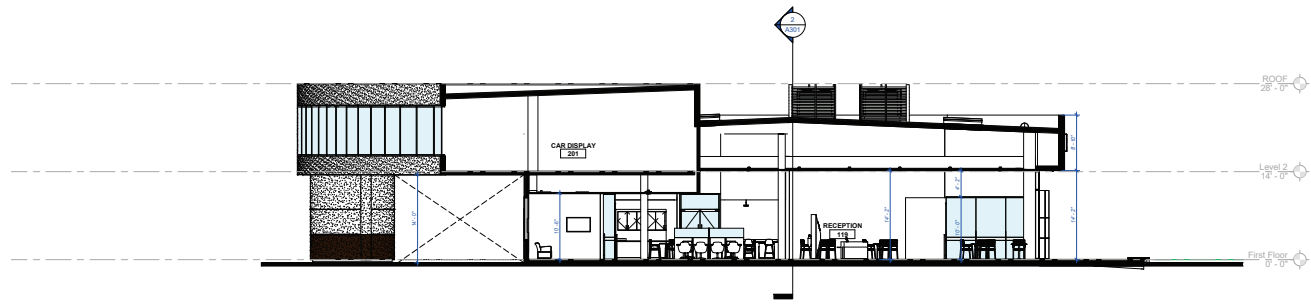
Client:
BRANDON STEVEN MOTORS
3974 S. FIGUEROA ST. LOS ANGELES, CA. 90037

Project:
Hyundai Carson
2205 E 223rd St, Carson, CA 90810

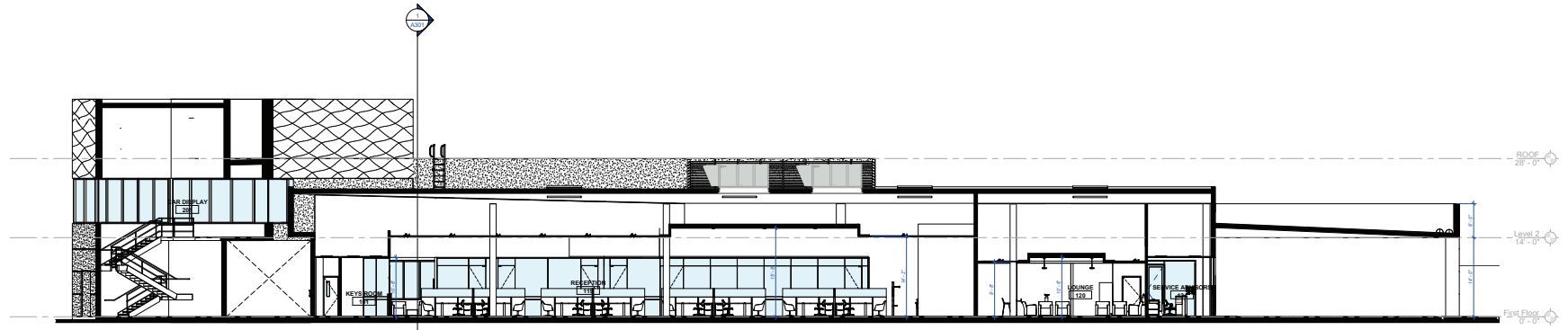
Project Number: 22096
Drawn By: Author
Checked By: Checker
Approved By: Approver

Sheet Title:
EXTERIOR 3D VIEWS

Sheet Number:
A205



BUILDING SECTION 1
1
A301
1/8" = 1'-0"



BUILDING SECTION 2
2
A301
1/8" = 1'-0"

Signed & Sealed:
A release from must accompany the distribution of
and for Plans from YSM Design PC and must be
sealed and stamped prior to use of the file. The
using the file. The user agrees to the terms
of the release form, in stated public regardless of
signature of the user.

Rev	Date	Comments

CAD FILES
A release from must accompany the distribution of
and for Plans from YSM Design PC and must be
sealed and stamped prior to use of the file. The
using the file. The user agrees to the terms
of the release form, in stated public regardless of
signature of the user.

The user of this CAD or Plan file agrees
consequently, to the fullest extent permitted by law,
to defend, indemnify, and hold YSM Design PC
harmless from any damage, liability, or cost,
including all attorney's fees and cost of defense,
arising from any use, reuse or modification of the
plans, specifications and/or documents, files or any
person or entity which accepts or obtains the plans,
specifications and/or documents, files from or through
the user.

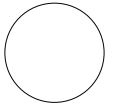
YSM Design PC makes no warranties, either
expressed or implied, of merchantability or fitness for
any particular purpose. In no event shall YSM
Design PC be liable for any loss of profit or any
damages resulting from the use of these documents. YSM
Design PC may substitute the use of these
documents with any other documents. The user of these documents,
electronically accepts full sole risk and responsibility for
any and all claims arising as a result from use or
distribution of these documents, intentional or
otherwise.

Client:
**BRANDON STEVEN
MOTORS**
3974 S. FIGUEROA ST. LOS
ANGELES, CA. 90037

Project:
**Hyundai
Carson**
2205 E 223rd St, Carson, CA
90810

Project Number: 22096
Drawn By: Author
Checked By: Checker
Approved By: Approver

Sheet Title:
**BUILDING
SECTIONS -
SHOWROOM**
Sheet Number:
A301



Signed & Sealed:

Copyright © YSM Design, P.C. 11/29/2023 5:00:14 PM
All rights reserved. No part of this drawing may be reproduced or transmitted in any form or by any means, electronic or mechanical, including photocopying, recording, or by any information storage and retrieval system, without the prior written permission of YSM Design, P.C. A professional seal is required on all drawings and is not to be used on any drawings unless it is the original drawing.

Rev	Date	Comments

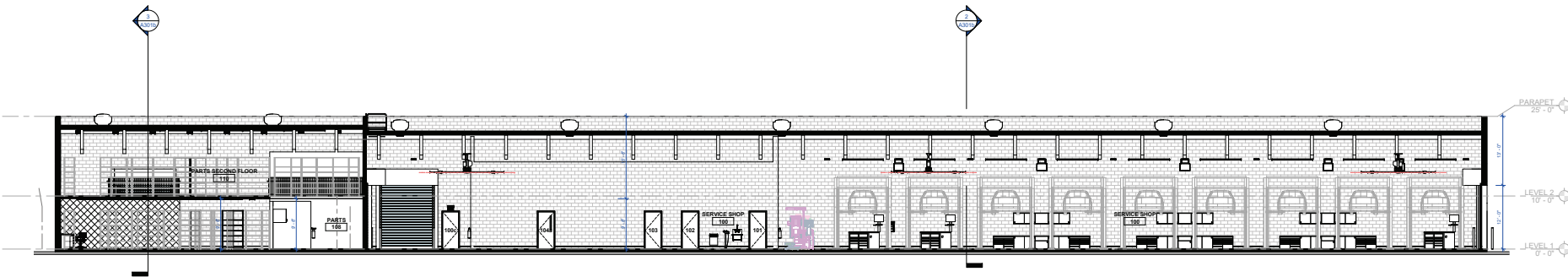
BID SET

Every Contractor and Subcontractor by submitting a bid for this project, declares that they have reviewed all aspects of this project, and that they understand the scope and nature of the work to be performed. They agree to provide a complete project that meets all applicable building codes.

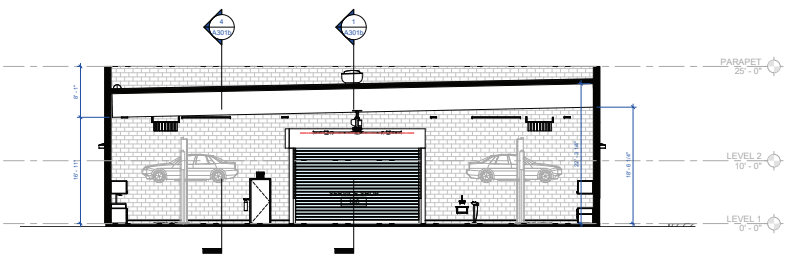
Specifications or descriptions are found. These should be submitted by the bidding General Contractor as a Request For Information before bid is due. These clarifications will be issued to all Bidders in Addition. No consideration will be given after the bid date for issues that could clearly have been answered during the Bidding Period.

It is the responsibility of ALL Bidders to become familiar with this project site. No Change Order Requests will be accepted based on information readily ascertainable from the project site.

No consideration will be given for Change Order Requests based on any of the following:
 1. Items requiring clarification that were not submitted as an exception on the initial bid.
 2. Items requiring clarification that was submitted by Bidder as a request for information during bidding.
 3. Items drawings to be re-bid/clarified for a particular item.
 4. Items that can be reasonably inferred from contract documents.



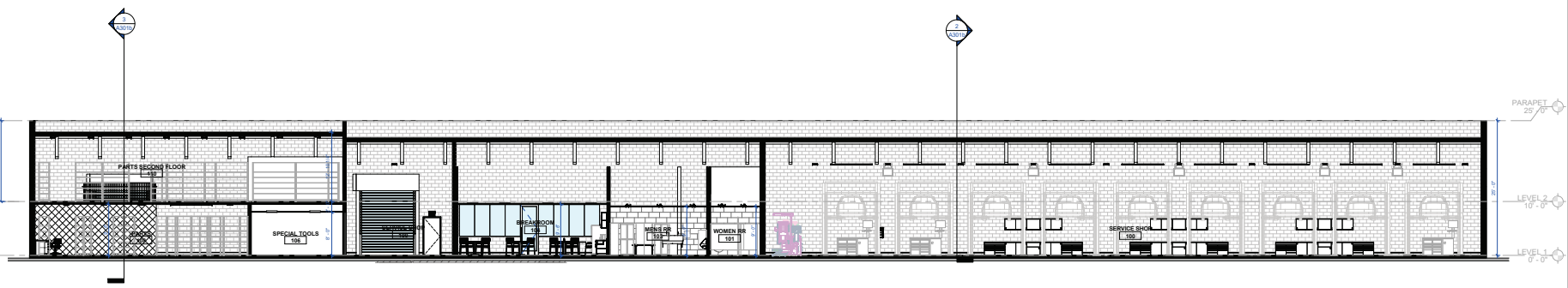
1 Building Section-01
A301b 1/8" = 1'-0"



2 Building Section-02
A301b 1/8" = 1'-0"



3 Building Section-03
A301b 1/8" = 1'-0"



4 Building Section-04
A301b 1/8" = 1'-0"

Client:
Brandon Steven Motors
2205 E 223rd St, Carson, CA 90810

Project:
Hyundai Carson
2205 E 223rd St, Carson, CA 90810

Project Number: 22095
 Drawn By: Author
 Checked By: Checker
 Approved By: Approver

Sheet Title:
BUILDING SECTIONS - SHOWROOM
Sheet Number:
A301b