



# City of Carson

## Report to Mayor and City Council

December 17, 2013  
New Business Consent

**SUBJECT: CONSIDERATION OF RESOLUTION NO. 13-118 APPROVING THE INSTALLATION OF A STOP SIGN ON NORTHBOUND 238<sup>TH</sup> STREET AT ITS INTERSECTION WITH 237<sup>TH</sup> STREET**

Submitted by Massoud Ghiam, P.E.  
Acting Director of Public Works/City Engineer

Approved by Jacquelyn Acosta  
Acting City Manager

### **I. SUMMARY**

A request was received from representatives of the neighborhood watch committee to install a stop sign on 238<sup>th</sup> Street at its intersection with 237<sup>th</sup> Street (Exhibit No. 1). This is a "T" intersection that currently has no stop signs (Exhibit No. 2). The primary reason for the stop sign request is to improve safety for motorists and pedestrians. After analyzing the intersection and observing the traffic patterns, pedestrian patterns, and visibility at this location, staff recommends that a stop sign be installed on the 238<sup>th</sup> Street approach to the 237<sup>th</sup> Street / 238<sup>th</sup> Street intersection.

On November 12, 2013, the Public Works Commission voted to approve the request for a stop sign at this intersection (Exhibit No. 3). Resolution No. 13-118 directs staff to install the stop sign as recommended by the Public Works Commission if the City Council concurs (Exhibit No. 4).

### **II. RECOMMENDATION**

WAIVE further reading and ADOPT Resolution No. 13-118, "A RESOLUTION OF THE CITY COUNCIL OF THE CITY OF CARSON, CALIFORNIA, APPROVING THE INSTALLATION OF A STOP SIGN ON NORTHBOUND 238<sup>TH</sup> STREET AT ITS INTERSECTION WITH 237<sup>TH</sup> STREET."

### **III. ALTERNATIVES**

1. DO NOT APPROVE the request to install a stop sign on 238<sup>th</sup> Street at its intersection with 237<sup>th</sup> Street.
2. TAKE another action the City Council deems appropriate.

### **IV. BACKGROUND**

The intersection of 237<sup>th</sup> Street and 238<sup>th</sup> Street is a "T" intersection that is not currently equipped with traffic control (stop signs or yield signs). The east-west street, 237<sup>th</sup> Street, is a two lane residential street that runs between Panama Avenue and Idabel Avenue in the neighborhood west of Avalon Boulevard and

10

north of Sepulveda Boulevard. The east-west street, 238<sup>th</sup> Street, is a two lane residential street that extends easterly from Panama Avenue and curves to the north to intersect with 237<sup>th</sup> Street at a “T” intersection.

As the intersection of 237<sup>th</sup> Street and 238<sup>th</sup> Street does not have a stop sign on any of the three approaches to the intersection, the right-of-way rules that are stated in Section 21800 of the California Vehicle Code are applicable to motorists passing through the intersection. Subsection (b)(1) of this Vehicle Code section states, “When two vehicles enter an intersection from different highways at the same time, the driver of the vehicle on the left shall yield the right-of-way to the vehicle on his or her immediate right, except that the driver of any vehicle on a terminating highway shall yield the right-of-way to any vehicle on the intersecting continuing highway.” This means that drivers approaching the intersection on 238<sup>th</sup> Street, which is a terminating highway because it does not continue beyond the intersection, must yield to all vehicles on 237<sup>th</sup> Street (eastbound and/or westbound).

While the right-of-way rule from the California Vehicle Code is generally acceptable at the intersection of two local residential streets, particularly at “T” intersections, there are constraints at the 237<sup>th</sup> Street / 238<sup>th</sup> Street intersection that result in visibility restrictions. The sight distance along 237<sup>th</sup> Street is restricted to the east and west of 238<sup>th</sup> Street because of houses, vegetation, and parked vehicles, particularly for motorists approaching the intersection at the legal speed of 25 miles per hour. This situation results in potential safety conflicts that could be alleviated by installing a stop sign, and thereby requiring motorists on 238<sup>th</sup> Street to stop before turning onto 237<sup>th</sup> Street. Currently, drivers are not required to stop while approaching the intersection.

The guidelines in the “California Manual on Uniform Traffic Control Devices” (MUTCD, 2012 edition) state that stop signs should be used if engineering judgment indicates that one or more conditions exist. Among the conditions that are listed in the manual that would be appropriate for a stop sign installation at this location are:

- A. Intersection of a less important road with a main road where application of the normal right-of-way rule would not be expected to provide reasonable compliance with the law, and
- B. Street entering a through highway or street.

Observations at the intersection of 237<sup>th</sup> Street and 238<sup>th</sup> Street and reports from representatives of the neighborhood indicate that both of these scenarios are applicable. Criterion A is applicable because many drivers on northbound 238<sup>th</sup> Street turn onto 237<sup>th</sup> Street with only minimal slowing and thereby create

conflicts with vehicles and pedestrians on 237<sup>th</sup> Street. Criterion B is applicable because 238<sup>th</sup> Street is entering 237<sup>th</sup> Street, which is used as a through street for motorists traveling between Panama Avenue and Idabel Avenue, which connects to Avalon Boulevard.

As the right-of-way rule from the California Vehicle Code does not provide reasonable compliance with the law and as the visibility constraints at this location create potential safety risks for motorists and pedestrians, it is recommended that a stop sign be installed on northbound 238<sup>th</sup> Street at its intersection with 237<sup>th</sup> Street. Included in the installation are a stop bar (limit line) and a STOP legend that would be painted on the pavement.

The MUTCD also has guidelines for the installation of multi-way stop signs (three-way or four-way stop signs), including such criteria as traffic volumes, pedestrian volumes, and accident statistics. The conditions at the 237<sup>th</sup> Street / 238<sup>th</sup> Street intersection do not warrant the installation of a three-way stop.

**V. FISCAL IMPACT**

The estimated cost of installing the proposed stop sign and associated pavement markings is \$500.00. Funds are available in the adopted FY 2013/14 Public Works Sign Maintenance budget in account no. 01-80-840-083-8028.

**VI. EXHIBITS**

1. Location Map. (pg. 5)
2. Aerial photo of existing conditions. (pg. 6)
3. Minutes, November 12, 2013, Item No. 7(a). (pg. 7)
4. Resolution No. 13-118. (pg. 8)

\\Carson\_nas\devsvrs\ENGINEERING DIVISION\Agenda1\2013\12-17-13 CC Stop Sign 238th at 237th.docx

Prepared by: Richard Garland, Traffic Engineer

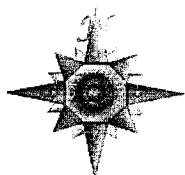
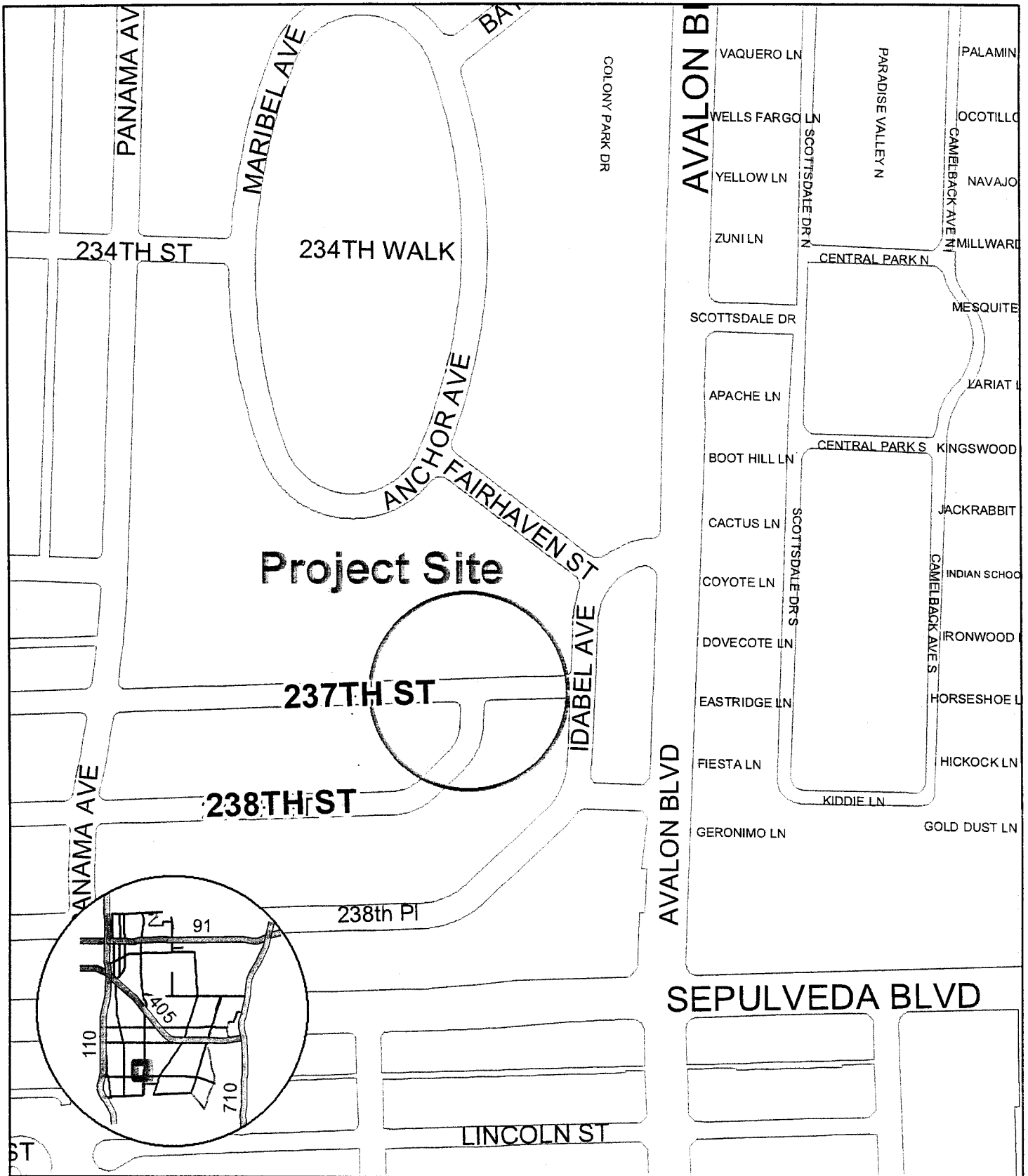
TO:Rev11-25-2013

Reviewed by:

City Clerk	City Treasurer
Administrative Services	Public Works
Community Development	Community Services

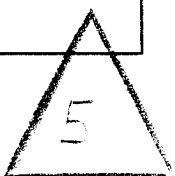
**Action taken by City Council**

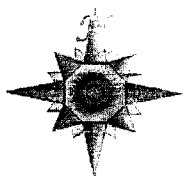
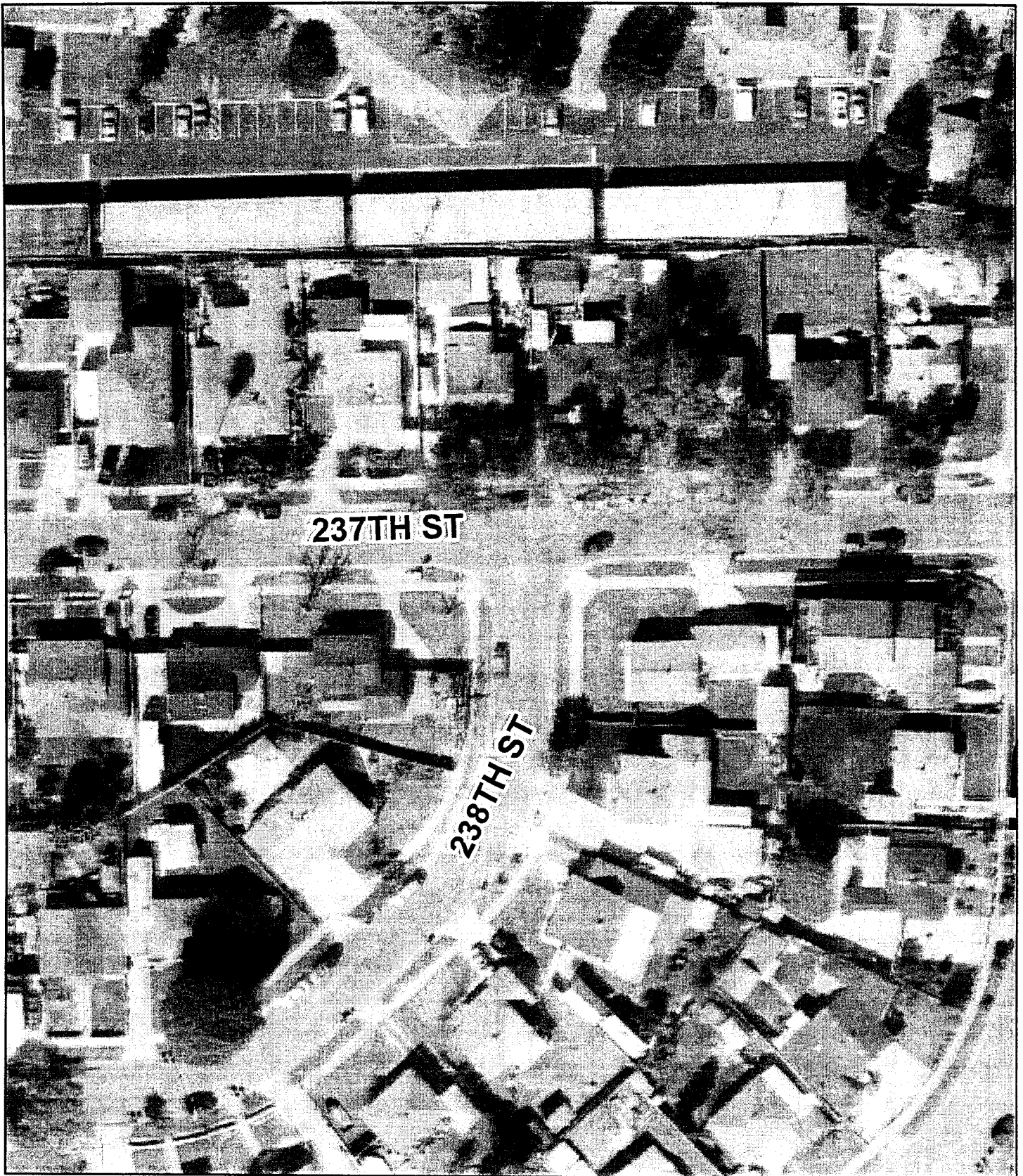
Date \_\_\_\_\_ Action \_\_\_\_\_



**Location Map**  
**237th Street / 238th Street Intersection**

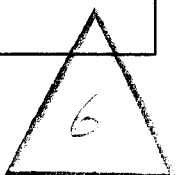
**EXHIBIT NO. 1**





**Aerial Photo of Existing Conditions  
237th Street / 238th Street Intersection**

**EXHIBIT NO. 2**



**7(a): REQUEST TO INSTALL STOP SIGN ON 238<sup>TH</sup> STREET AT 237<sup>TH</sup> STREET**

Staff Recommendation:

RECOMMEND that the City Council authorize the installation of a stop sign on the 238<sup>th</sup> Street approach to the 237<sup>th</sup> Street / 238<sup>th</sup> Street intersection.

ACTION: On a motion by Commissioner Gama, seconded by Commissioner Thompson, the request to install a stop sign on the 238<sup>th</sup> Street approach to the 237<sup>th</sup> Street / 238<sup>th</sup> Street intersection was unanimously approved and carried by the following vote:

Ayes: Ferrer, Gama, Johnson, Thompson, and Valdez

Noes: None

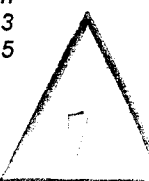
Abstain: None

Absent: Calhoun, Fa'avae, Guine

**Public Comments:**

Mr. Douglas Chaney, Block Captain, 537 East 237<sup>th</sup> Street, Carson, California, 90745, was in attendance and stated the reasons why he was in favor of a stop sign on the 238<sup>th</sup> Street approach to the 237<sup>th</sup> Street/238<sup>th</sup> Street intersection.

Ms. Sandra Bouelle, co-Block Captain, 23617 Idabel Avenue, Carson, California, 90745, sent Traffic Engineer Garland an e-mail on November 12, 2013, stating the reasons why she was in favor of a stop sign on the 238<sup>th</sup> Street approach to the 237<sup>th</sup> Street/238<sup>th</sup> Street intersection.



RESOLUTION NO. 13-118

A RESOLUTION OF THE CITY COUNCIL OF THE CITY OF CARSON, CALIFORNIA, APPROVING THE INSTALLATION OF A STOP SIGN ON NORTHBOUND 238<sup>TH</sup> STREET AT ITS INTERSECTION WITH 237<sup>TH</sup> STREET

WHEREAS, the Public Works Commission and Public Works Department staff recommend that the City Council authorize the installation of a stop sign on the northbound 238<sup>th</sup> Street approach to the 237<sup>th</sup> Street / 238<sup>th</sup> Street intersection.

NOW, THEREFORE, be it determined by the City Council of the City of Carson, California, that:

**Section 1.** The City Council authorizes the installation of a stop sign on northbound 238<sup>th</sup> Street at its intersection with 237<sup>th</sup> Street.

**Section 2.** The Public Works Department is directed to erect a stop sign at this intersection and install the associated pavement markings.

**PASSED, APPROVED and ADOPTED** this 17<sup>th</sup> day of December, 2013.

---

Mayor Jim Dear

ATTEST:

---

City Clerk Donesia L. Gause, CMC

APPROVED AS TO FORM:

---

City Attorney

EXHIBIT NO. 14

