



City of Carson

Report to Mayor and City Council

December 17, 2013
New Business Consent

SUBJECT: CONSIDERATION OF RESOLUTION NO. 13-119 APPROVING THE INSTALLATION OF STOP SIGNS ON NORTHBOUND AND SOUTHBOUND PANAMA AVENUE AT THE 236TH STREET INTERSECTION TO CREATE A THREE-WAY STOP

Submitted by Massoud Ghiam, P.E.
Acting Director of Public Works/City Engineer

Approved by Jacquelyn Acosta
Acting City Manager

I. SUMMARY

A request was received from representatives of the neighborhood watch committee to consider installing stop signs on Panama Avenue at 236th Street to create a three-way stop at this "T" intersection. This intersection is located near the southeast corner of Catskill Avenue Elementary School (Exhibit No. 1). A stop sign is currently in place on the eastbound approach of 236th Street at the intersection, but there are no stop signs on the northbound and southbound approaches of Panama Avenue (Exhibit No. 2). After analyzing the intersection and observing the traffic and pedestrian patterns, staff recommends that stop signs be installed on Panama Avenue at 236th Street to create a three-way stop.

On November 12, 2013, the Public Works Commission voted to approve the request for stop signs at this intersection (Exhibit No. 3). Resolution No. 13-119 directs staff to install the stop signs as recommended by the Public Works Commission if the City Council concurs (Exhibit No. 4).

II. RECOMMENDATION

WAIVE further reading and ADOPT Resolution No. 13-119, "A RESOLUTION OF THE CITY COUNCIL OF THE CITY OF CARSON, CALIFORNIA, APPROVING THE INSTALLATION OF STOP SIGNS ON THE NORTHBOUND AND SOUTHBOUND APPROACHES OF PANAMA AVENUE AT THE 236TH STREET INTERSECTION TO CREATE A THREE-WAY STOP."

III. ALTERNATIVES

1. DO NOT APPROVE the request to install stop signs on Panama Avenue at its intersection with 236th Street.
2. TAKE another action the City Council deems appropriate.

IV. BACKGROUND

Typically, when an intersection is analyzed for the possibility of installing multi-way stop signs (two-way or three-way stop signs), a standard warrant analysis is

//

conducted in accordance with the guidelines of the “California Manual on Uniform Traffic Control Devices” (MUTCD, 2012 Edition). The analysis addresses such issues as traffic volumes, pedestrian volumes, vehicle delay, and accident statistics, and the analysis is based on data for the eight busiest hours of the day. According to the MUTCD criteria, the intersection of Panama Avenue at 236th Street does not meet the standard warrants for a three-way stop because the traffic and pedestrian volumes are well below the prescribed thresholds during all hours of the day except for the extremely busy one-hour period at the beginning and end of each school day.

Because of the unique peaking characteristics associated with school-related traffic and pedestrian patterns, the Los Angeles Unified School District (LAUSD) has developed a set of guidelines that are applicable to intersections in a school zone. Whereas the MUTCD guidelines for multi-way stop signs address the eight busiest hours of the day, the LAUSD guidelines address only the two peak periods of traffic and pedestrian activity generated by the school; i.e., at the beginning and end of the school day.

The LAUSD guidelines state that all-way (3-way or 4-way) stop signs may be justified if the total vehicular and pedestrian volume entering the intersection from all approaches averages at least 350 units (vehicles and pedestrians) per hour during any two hours of an average day, and if the combined vehicular and pedestrian volume entering the intersection from the minor street (in this case, 236th Street) averages at least 140 units per hour during the same two hours.

Observations at the Panama Avenue / 236th Street intersection were conducted to quantify the traffic and pedestrian volumes at the intersection. The results are summarized in Table 1.

TABLE 1
TRAFFIC AND PEDESTRIAN COUNTS
PANAMA AVENUE AT 236TH STREET

Count Category	Vehicle Volume	Pedestrian Volume	Combined Veh + Ped	Threshold Values	3-Way Stop Warranted
A.M. PEAK HOUR					
Total intersection minor street (236 th Street)	294	116	410	350	Yes
	49	112	161	140	Yes
P.M. PEAK HOUR					
Total intersection minor street (236 th Street)	196	172	368	350	Yes
	58	169	227	140	Yes

As the peak hour traffic and pedestrian volumes are above the LAUSD threshold values for the Panama Avenue / 236th Street intersection, a three-way stop is warranted at this intersection. It is recommended, therefore, that stop signs be installed on the north and south legs of the intersection to create a three-way stop. Included in the installation are stop bars (limit lines) and STOP legends that would be painted on the pavement.

A yellow school zone crosswalk is in place on the north leg of Panama Avenue and a crossing guard is assigned to this intersection. The primary reason for the stop sign installation is to improve safety for the numerous elementary school students who cross the street at this location while walking to and from the school and Scott Park.

V. FISCAL IMPACT

The estimated cost of installing the proposed stop signs and associated pavement markings is \$800.00. Funds are available in the adopted FY 2013/14 Public Works Sign Maintenance budget in account no. 01-80-840-083-8028.

VI. EXHIBITS

1. Location Map. (pg. 5)
2. Aerial photo of existing conditions. (pg. 6)
3. Minutes, November 12, 2013, Item No. 7(b). (pg. 7)
4. Resolution No. 13-119. (pg. 8)

\\Carson_nas\devsvrs\ENGINEERING DIVISION\Agenda\2013\12-17-13 CC Stop Signs Panama 236th.docx

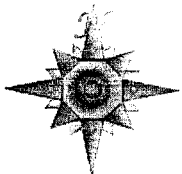
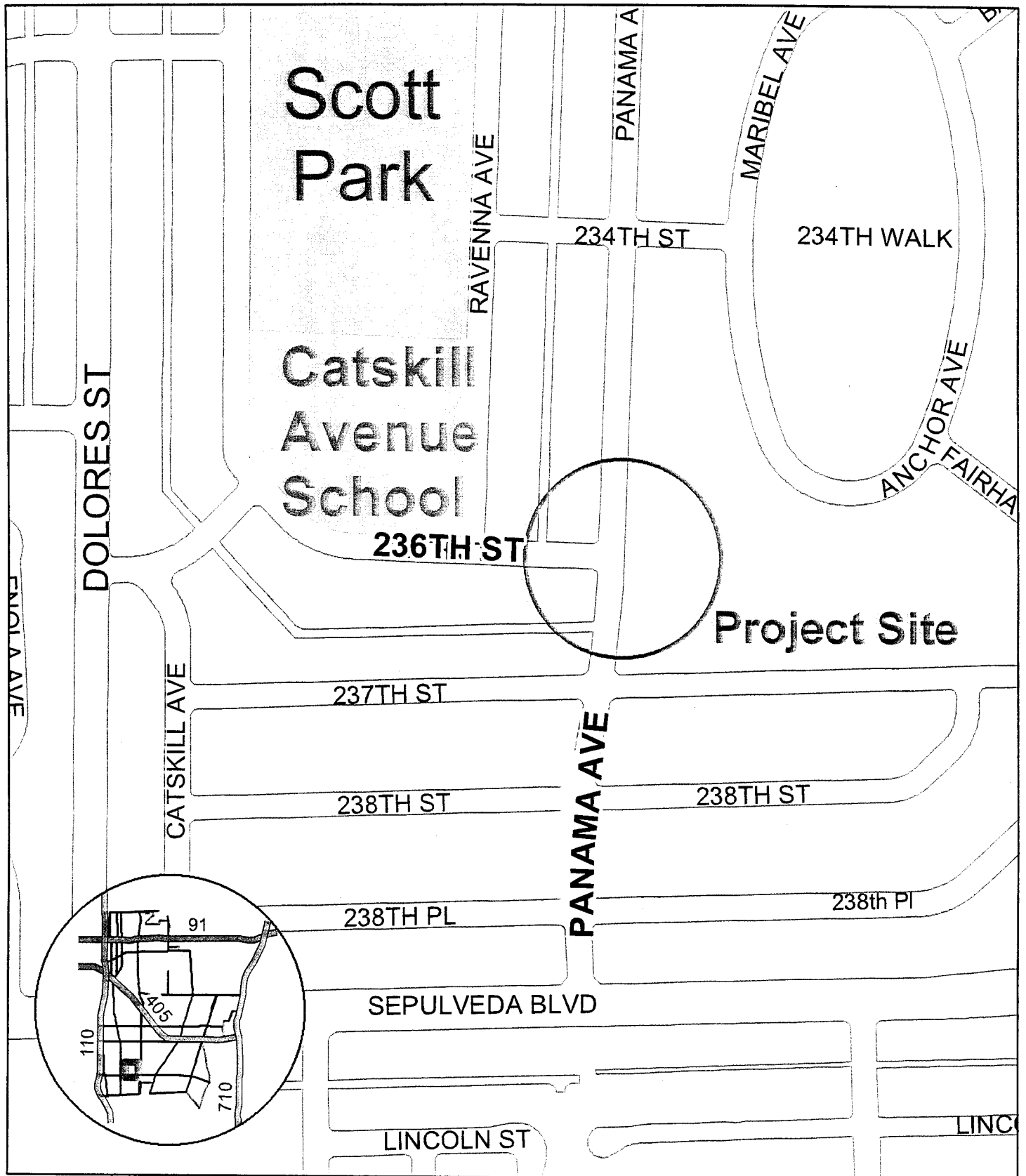
Prepared by: Richard Garland, Traffic Engineer

TO:Rev11-25-2013

Reviewed by:

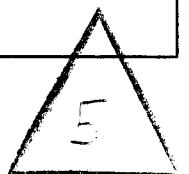
City Clerk	City Treasurer
Administrative Services	Public Works
Community Development	Community Services

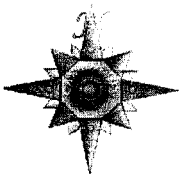
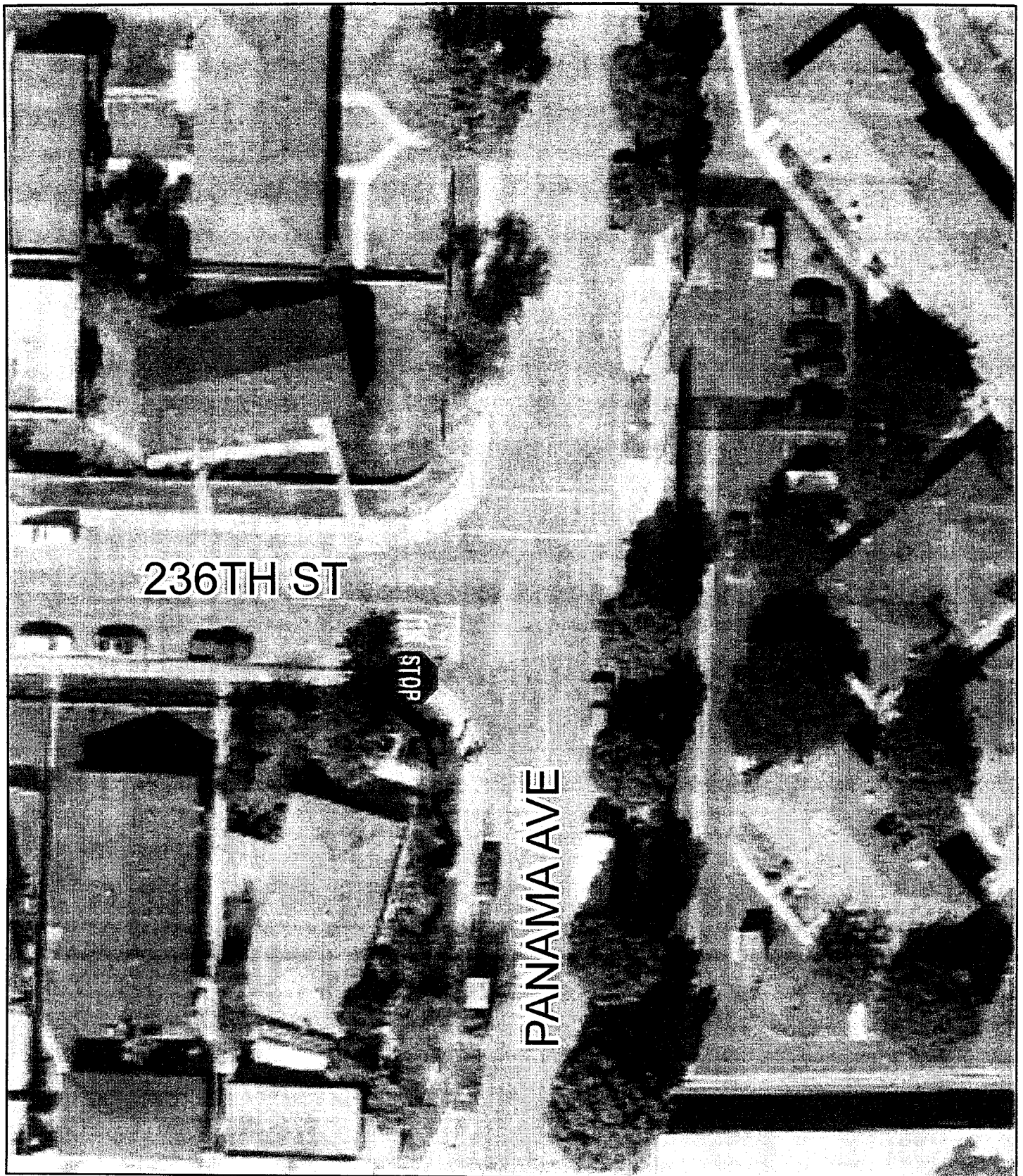
Action taken by City Council	
Date_____	Action_____



Location Map
Panama Avenue / 236th Street Intersection

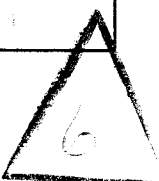
EXHIBIT NO. 1





**Aerial Photo of Existing Conditions
Panama Avenue / 236th Street Intersection**

EXHIBIT NO. 2



7(b): REQUEST TO INSTALL STOP SIGNS ON PANAMA AVENUE AT 236TH STREET

Staff Recommendation:

RECOMMEND that the City Council authorize the installation of stop signs on the north and south approaches of Panama Avenue at its intersection with 236th Street to create a three-way stop at this intersection.

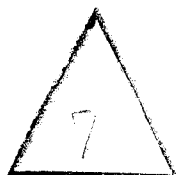
ACTION: On a motion by Commissioner Gama, seconded by Commissioner Valdez, the request to install stop signs on the north and south approaches of Panama Avenue at its intersection with 236th Street to create a three-way stop at this intersection was approved and unanimously carried by the following vote:

Ayes: Ferrer, Gama, Johnson, Thompson, and Valdez

Noes: None

Abstain: None

Absent: Calhoun, Fa'avae, Guine



RESOLUTION NO. 13-119

A RESOLUTION OF THE CITY COUNCIL OF THE CITY OF CARSON, CALIFORNIA, APPROVING THE INSTALLATION OF STOP SIGNS ON THE NORTHBOUND AND SOUTHBOUND APPROACHES OF PANAMA AVENUE AT THE 236TH STREET INTERSECTION TO CREATE A THREE-WAY STOP

WHEREAS, the Public Works Commission and Public Works Department staff recommend that the City Council authorize the installation of stop signs on the northbound and southbound Panama Avenue approaches to the Panama Avenue / 236th Street intersection.

NOW, THEREFORE, be it determined by the City Council of the City of Carson, California, that:

Section 1. The City Council authorizes the installation of stop signs on northbound and southbound Panama Avenue at its intersection with Atmore Avenue to create a three-way stop.

Section 2. The Public Works Department is directed to erect stop signs at this intersection and install the associated pavement markings.

PASSED, APPROVED and ADOPTED this ____ day of _____, 2013.

Mayor Jim Dear

ATTEST:

City Clerk Donesia L. Gause, CMC

APPROVED AS TO FORM:

City Attorney