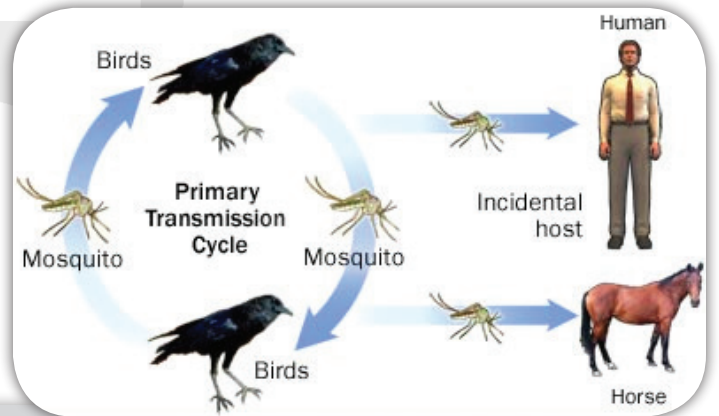


WEST NILE VIRUS CONFIRMED IN CARSON

On July 29, 2016, the Greater Los Angeles County Vector Control District (GLACVCD) detected West Nile Virus Activity for the first time in the City of Carson this year. GLACVCD confirmed 2 mosquito samples that tested positive for WNV in the City. **There are NO HUMAN CASES identified in Carson.**



What Does This Mean?

Finding mosquito samples that tested positive for WNV is an indication that residents in our community are at risk of WNV infection from mosquito bites. The disease surveillance program serves as an early warning system in the detection of mosquito-borne viruses that can infect people and animals.

The District uses the following factors to assess health risk in our community:

- **Higher-than-average daily temperatures**
- **Mosquito Population Monitoring**
– Using traps set up in every community
- **Mosquito Testing for Diseases**
- **Dead Birds** – A CA state program: Dead birds help determine spread of West Nile virus
- **Sentinel Chickens** – Chickens develop antibodies to West Nile virus, which can be detected by testing.

Using these measurements, the GLACVCD is able to protect your health by responding appropriately to mosquito-borne disease threats.

For more information, please visit the Greater Los Angeles County Vector Control District website at www.GLACVCD.org. If you observe any conditions that warrant inspection, please do not hesitate to call (562-944-9656)

PREVENTION

The best prevention is to stop the mosquitoes before they bite. Since mosquitoes lay eggs in standing water, eliminate any water sources around the home at least once a week.



Any container that can hold water is a potential breeding source for mosquitoes. It is recommended that everyone take the following precautions:

- **Avoid** activity at dawn and dusk when mosquitoes are most active.
- **Apply** mosquito repellent containing the active ingredients DEET, Picaridin, Oil of Lemon Eucalyptus or IR3535 when outside.
- **Wear** protective clothing (loose, light colored, long sleeve shirts and pants)