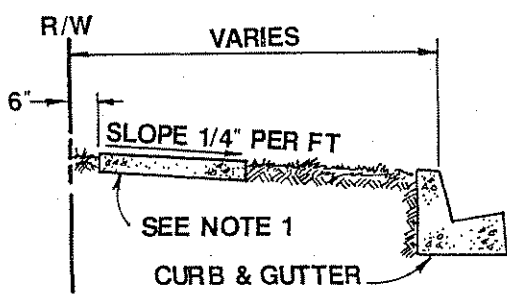


PLAN

BEGIN MEANDERING SIDEWALK
10' FROM EXISTING DRIVEWAY

NOTE:

- 1. SEE STANDARD DRAWING NO. 104 FOR BASE REQUIREMENTS UNDER SIDEWALK,



SECTION A-A

CITY OF CARSON

REVISIONS

CASE 4
MEANDERING SIDEWALK

RECOMMENDED: W. Haber APPROVED: Harold C. Williams
DIVISION ENGINEER DIRECTOR OF PUBLIC WORKS

DRAWN BY [Signature]
DATE APPROVED 2/2/87
NO. 119

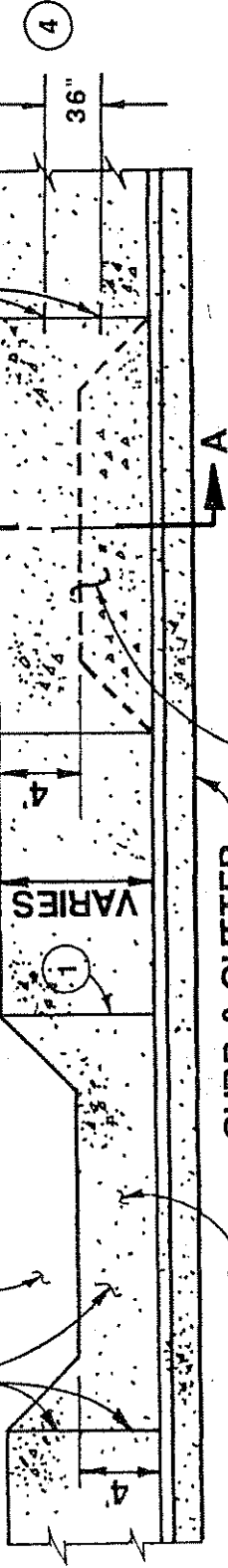
103819

SAWCUT AND REMOVE (TYPICAL). NO. 3 X 8" REBAR.

EXISTING PLANTER. R/W

VARIES

R/W

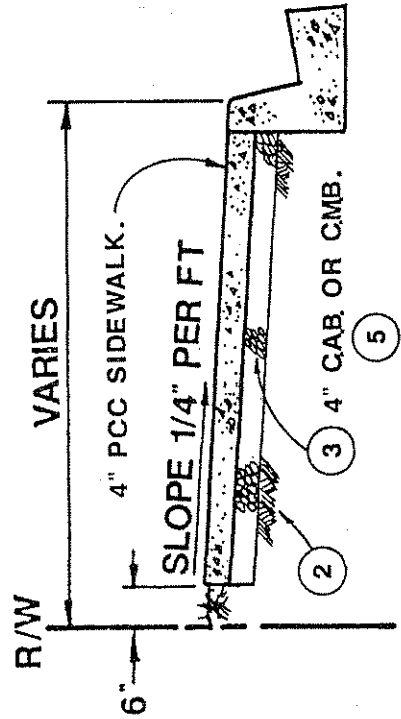


(E) 4" P.C.C. SIDEWALK (E) CURB & GUTTER

CONSTRUCT NEW 4" PCC SIDEWALK PER SECTION A-A DETAIL (TYPICAL).

PLAN

- 1 SAWCUT AT THE NEAREST SCORELINE AWAY FROM PLANTER.
- 2 COMPACT SUBGRADE TO MIN 90% COMPACTION.
- 3 PLACE 4" CAB OR CMB, MIN 95% COMPACTION.
- 4 36" REBAR SPACING CENTERED AT SIDEWALK MIDPOINT PLACED AT EVERY JOIN.
- 5 IN LIEU OF CAB OR CMB REQUIREMENT, DEVELOPER AGREES TO REPLACE ANY NEW SIDEWALK THAT SETTLES DURING THE 10 YEAR PERIOD FOLLOWING CONSTRUCTION THEREOF.



SECTION A-A

CITY OF CARSON

CARSON MALL

SIDEWALK REPLACEMENT DETAILS

REVISIONS

DRAWN BY
Emmi Faler
DATE APPROVED
2-1-93

APPROVED: *George A. Schubert*
DIRECTOR OF ENGINEERING SERVICES

NO. 119 A

WHEN TO MAKE REPAIRS

1. WHEN VERTICAL DISPLACEMENT (SEE FIG. 1) OR ANY DEPRESSION IS 1" OR MORE. INSPECTOR TO ALSO CONSIDER OTHER CIRCUMSTANCES SUCH AS POTHOLES, JAGGED BREAKS OR CRACKS, AND THE PRESENCE OF THE FOREIGN SUBSTANCES AT THE LOCATION.
2. WHEN SLOPE EXCEEDS 5:1 - SEE FIG. 2.
3. REPAIRS ARE TO BE MADE WITHIN 48 HOURS OF DISCOVERY OF DEFICIENCY THROUGH:
 - A. INSPECTION OF SIDEWALKS, DRIVEWAYS AND CURBS IN CONJUNCTION WITH TREE MAINTENANCE BY ZONES. (REPORT ON "SIDEWALK INSPECTION REPORT").
 - B. ANSWERING COMPLAINT AND REPAIR IS FOUND TO BE WARRANTED.
 - C. ROUTINE MAINTENANCE OPERATIONS (REPORT ON ADDENDUM TO "SIDEWALK INSPECTION REPORT").
 - D. MONTHLY INSPECTION OF ALL ROADS BY PUBLIC WORKS MAINTENANCE SUPERINTENDENT OR PUBLIC WORKS MAINTENANCE SUPERVISORS.

HOW TO MAKE REPAIRS

1. WITH ASPHALT CONCRETE, PATCH MUST BE 12 TIMES VERTICAL DISPLACEMENT, OR GREATER (FIG. 3).
2. WHEN SIDEWALK OR DRIVEWAY IS BUCKLED NOT DUE TO TREE ROOT, SAWCUT TO ALLOW EXPANSION, LOWER TO GRADE AND FILL SAWCUT WITH CRACK FILLER. IF THIS IS NOT POSSIBLE, REMOVE BUCKLED CONCRETE AND REPLACE WITH A.C. IF SETTLEMENT PROBLEM, FILL WITH AC SEE FIGURE 2.
3. IF P.C.C. WALK OR DRIVE HAS BEEN RAISED BY TREE ROOTS, REPAIR WITH CONCRETE IF DIRECTOR OF PUBLIC WORKS AGREES TO ROOT PRUNE. IF NOT, AND TREE IS NOT TO BE REMOVED, REPAIR WITH A.C. BY MAKING SLOPE AT LEAST 6:1 AS SHOWN. SEE FIGURE 4.

FIG. 1

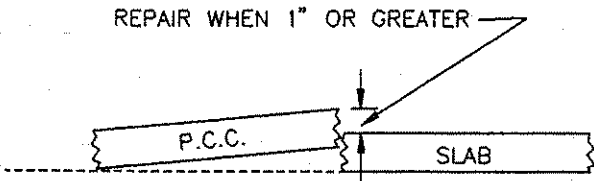


FIG. 2

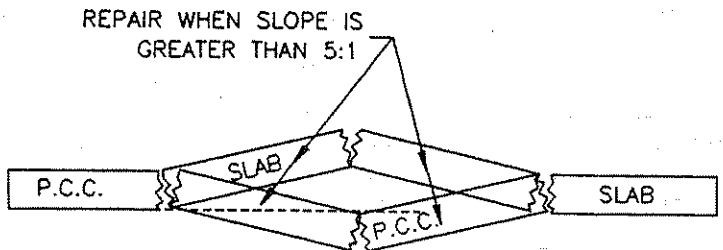


FIG. 3

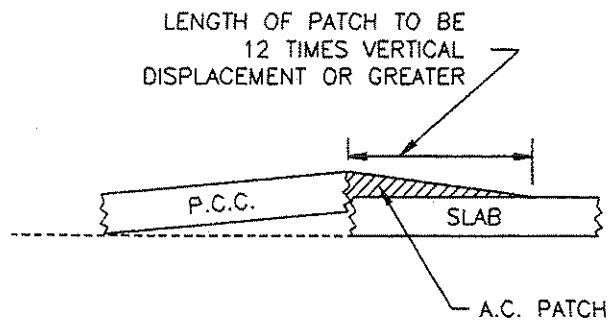
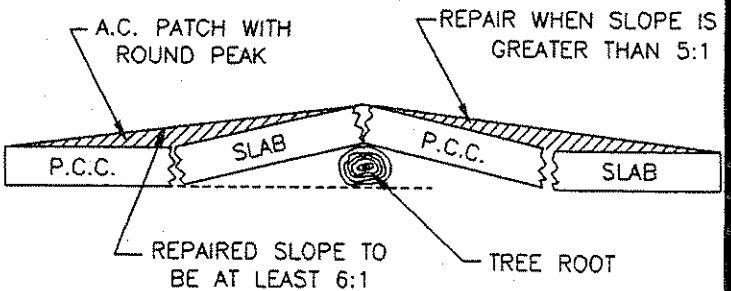


FIG. 4



CITY OF CARSON

REVISIONS	SIDEWALK AND DRIVEWAY REPAIR		DRAWN BY:
DATE APPROVED: 2-15-01	RECOMMENDED: <i>Fanokh A. Joffe</i> CIVIL ENGINEERING MANAGER	APPROVED: <i>Kern Boyce</i> DIRECTOR OF PUBLIC WORKS	GILBERT M. MARQUEZ, P.E.
SHEET 1 OF 1			NO. 119B