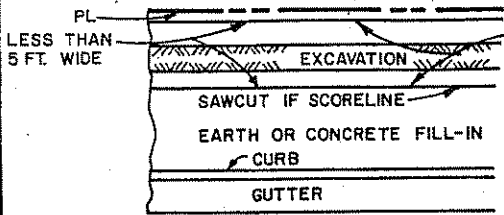


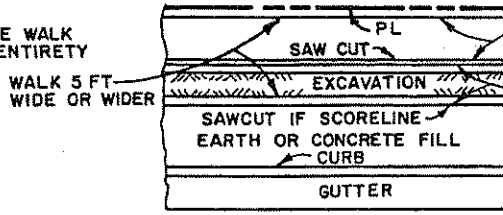
**WALK OR FILL-IN REPLACEMENT FOR EXCAVATIONS
MADE PARALLEL TO CURB OR PROPERTY LINE.**

**WALK LESS THAN 5 FT. WIDE
WALK ADJACENT TO PROPERTY LINE**



REPLACE WALK
IN ITS ENTIRETY

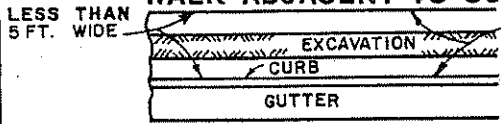
**WALK 5 FT. WIDE OR WIDER
WALK ADJACENT TO PROPERTY LINE**



IF LESS THAN 30 INCHES
REPLACE ENTIRE WALK

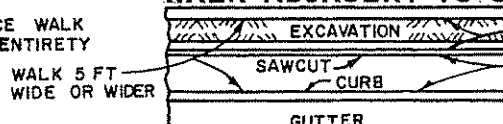
REPLACE 30 INCHES MIN

WALK ADJACENT TO CURB



REPLACE WALK
IN ITS ENTIRETY

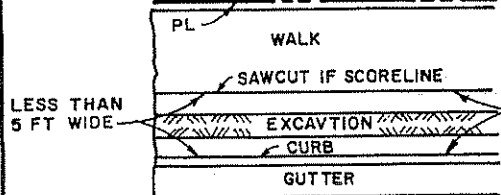
WALK ADJACENT TO CURB



REPLACE 30 INCHES MIN.

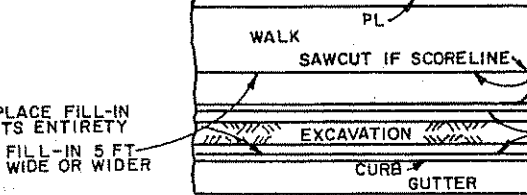
IF LESS THAN 30 INCHES
REPLACE THE ENTIRE
WALK

FILL-IN LESS THAN 5 FT WIDE



REPLACE FILL-IN
IN ITS ENTIRETY

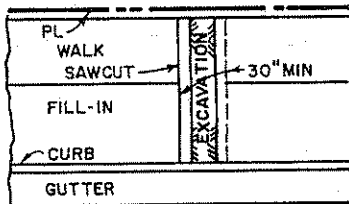
FILL-IN 5 FT. WIDE OR WIDER



IF LESS THAN 30 INCHES
REPLACE ENTIRE FILL-IN

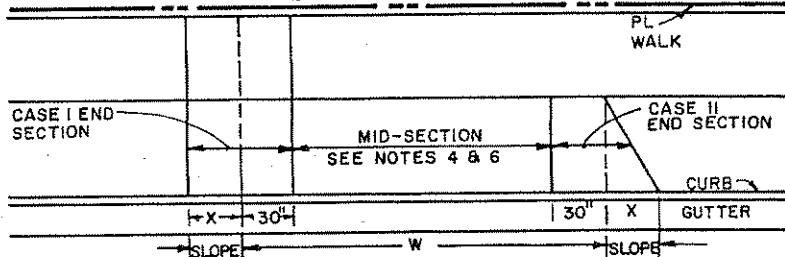
REPLACE 30 INCHES

**WALK OR FILL-IN REPLACEMENT FOR EXCAVATIONS
MADE NORMAL TO CURB OR PROPERTY LINE.** (THESE REQUIREMENTS ALSO APPLY TO ENDS OF PARALLEL EXCAVATIONS.)

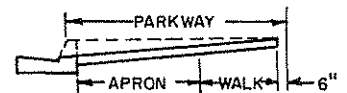


IF EXCAVATION FALLS WITHIN 30 INCHES OF EXPANSION JOINT, CONSTRUCTION JOINT, WEAKENED PLANE JOINT, CRACK OR EDGE, THE CONCRETE SHALL BE REMOVED AND REPLACED TO THE JOINT, CRACK OR EDGE.
IF AN EXCAVATION FALLS WITHIN 12 INCHES OF A SCORE LINE, THE CONCRETE SHALL BE REMOVED AND REPLACED TO THE SCORE LINE. THE SCORE LINE SHALL BE SAW CUT PRIOR TO REMOVAL.
THE MINIMUM LENGTH OF REPLACEMENT IN BOTH CASES SHALL BE 30 INCHES.

DRIVEWAY REPLACEMENT



CASE I DRIVEWAY



CASE II DRIVEWAY



NOTES:

1. CONCRETE WALK, FILL-IN AND DRIVEWAYS REMOVED IN CONNECTION WITH CONSTRUCTION SHALL BE REPLACED TO "NEATLY SAWED EDGES". SAW CUTS SHALL BE A MINIMUM OF 1-1/2" DEEP IN CONCRETE OVER 4" THICK AND 1" DEEP IN CONCRETE 4" OR LESS IN THICKNESS. ALL CUTS SHALL BE PARALLEL TO OR PERPENDICULAR TO THE CURB; ON CURVES, THE CUT SHALL BE RADIAL TO THE CURB.
2. A SCORE LINE OR MARK IS DEFINED AS A LINE MADE WITH A JOINTER TOOL 1/2" DEEP OR LESS AND NO MORE THAN 1/8" WIDE.
3. DRIVEWAY APRONS IN WHICH THE "W" DISTANCE IS LESS THAN 11 FT. SHALL BE REPLACED IN THEIR ENTIRETY IF CUT IN ANY AREA.
4. DRIVEWAY APRONS IN WHICH THE "W" DISTANCE IS 11 FT. OR MORE MAY BE CUT IN THE MID-SECTION AREA. THE MINIMUM REPLACEMENT SHALL BE 30" IN LENGTH. THE MINIMUM DISTANCE ALLOWED BETWEEN SUCH CUTS SHALL BE 14 FT.
5. DRIVEWAY APRONS IN WHICH THE "W" DISTANCE IS 11 FT. OR MORE MAY BE CUT IN THE END-SECTION. REPLACEMENT SHALL BE THE ENTIRE END-SECTION.
6. DRIVEWAY APRONS SHALL BE REPLACED FROM THE BACK OF THE CURB TO THE FRONT EDGE OF THE WALK; EXCEPT, WHERE WALK IS ADJACENT TO CURB, REPLACEMENT SHALL BE FROM BACK OF CURB TO BACK OF WALK.
7. WALK PORTIONS OF DRIVEWAYS SHALL BE REPLACED AS SHOWN ABOVE FOR EXCAVATIONS MADE PARALLEL OR NORMAL TO CURB.

CITY OF CARSON

**SIDEWALK & DRIVEWAY
REPLACEMENT**

REVISIONS

DRAWN BY
R. Gammack
DATE APPROVED
2/2/87

RECOMMENDED: *W. Huber* APPROVED: *Harold C. Williams*
DIVISION ENGINEER DIRECTOR OF PUBLIC WORKS

NO. 128