

**Table A-1
Plant Palette**

AL	Adapted to region	
L	Low supplemental water needs	
LM	Low to moderate supplemental water needs	
M	Moderate supplemental water needs	
Botanical (Latin) Name	Common Name	Estimated Water Needs in Coastal California
TREES		
<i>Acacia baileyana</i>	Bailey Acacia	AL
<i>Acacia dealbata</i>	Silver Wattle	AL
<i>Acacia decurrens</i>	Green Wattle	AL
<i>Acacia farnesiana</i>	Sweet Acacia	L
<i>Acacia longifolia</i>	Sydney Golden Wattle	AL
<i>Acacia melanoxylon</i>	Blackwood Acacia	AL
<i>Acacia pendula</i>	Weeping Myall	L
<i>Acacia retinodes</i>	Water Wattle	L
<i>Acacia saligna</i>	Willow Acacia	L
<i>Acacia smallii</i>	NCN	L
<i>Aesculus californica</i>	California Buckeye	AL
<i>Agonis flexuosa</i>	Peppermint Tree	M
<i>Albizia julibrissin</i>	Silk Tree	L
<i>Angophora costata</i>	Gum Myrtle	L
<i>Arbutus menziesii</i>	Madrone	L
<i>Arbutus unedo</i>	Strawberry Tree	L
<i>Brachychiton populneus</i>	Kurrajong Bottle Tree	L
<i>Broussonetia papyrifera</i>	Paper Mulberry	L
<i>Callistemon citrinus</i>	Lemon Bottlebrush	L
<i>Callistemon viminalis & cvs</i>	Weeping Bottlebrush	L
<i>Calocedrus decurrens</i>	Incense Cedar	M
<i>Casuarina cunninghamiana</i>	River She-oak	L
<i>Casuarina equisetifolia</i>	Horsetail Tree	AL
<i>Casuarina stricta</i>	Drooping She-oak	AL
<i>Ceanothus arboreus</i>	Feltleaf Ceanothus	L
<i>Ceanothus 'Ray Hartman'</i>	NCN	AL
<i>Ceanothus thyrsiflorus</i>	Blue Blossom	AL
<i>Cedrus atlantica & cvs</i>	Atlas Cedar	M
<i>Cedrus deodara & cvs</i>	Deodar Cedar	M
<i>Ceratonia siliqua</i>	Carob Tree	AL
<i>Cercidium microphyllum</i>	Foothill Palo Verde	<u>L</u>
<i>Cercis canadensis & cvs</i>	Eastern Redbud	M
<i>Cercis occidentalis</i>	Western Redbud	L
<i>Chilopsis linearis</i>	Desert Willow	L
<i>Chitalpa tashkentensis</i>	Chitalpa	L
<i>Cordyline australis</i>	Giant Dracaena	L

**Table A-1
Plant Palette**

Botanical (Latin) Name	Common Name	Estimated Water Needs in Coastal California
AL	Adapted to region	
L	Low supplemental water needs	
LM	Low to moderate supplemental water needs	
M	Moderate supplemental water needs	
<i>Cupressus arizonica</i>	Arizona Cypress	L
<i>Cupressus forbesii</i>	Tecate Cypress	L
<i>Cupressus glabra</i>	Smooth Arizona Cypress	L
<i>Cupressus macrocarpa</i>	Monterey Cypress	L
<i>Cupressus sempervirens</i>	Italian Cypress	L
<i>Dodonaea viscosa</i>	Hopseed Bush	LM
<i>Dracaena draco</i>	Dragon Tree	L
<i>Erythrina caffra</i>	Kaffirboom Coral Tree	M
<i>Feijoa sellowiana</i>	Pineapple Guava	L
<i>Ficus carica</i> & cvs	Common Fig	LM
<i>Geijera parviflora</i>	Australian Willow	L
<i>Grevillea robusta</i>	Silky Oak	L
<i>Jacaranda mimosifolia</i>	Jacaranda	M
<i>Juglans californica</i>	S. Calif.Black Walnut	AL
<i>Juniperus chinensis</i> 'Torulosa'	Hollywood Juniper	L
<i>Juniperus virginiana</i>	Eastern Redcedar	LM
<i>Lagerstroemia indica</i> & cvs	Crape Myrtle	L
<i>Laurus nobilis</i>	Sweet Bay	L
<i>Leptospermum laevigatum</i>	Australian Tea Tree	AL
<i>Leptospermum scoparium</i>	New Zealand Tea Tree	LM
<i>Lyonothamnus floribundus</i> & var.	Catalina Ironwood	AL
<i>Melaleuca armillaris</i>	Drooping Melaleuca	L
<i>Melaleuca linariifolia</i>	Flaxleaf Paperbark	L
<i>Melaleuca quinquenervia</i>	Cajeput Tree	L
<i>Melia azedarach</i> & cv	Chinaberry	AL
<i>Metrosideros excelsus</i>	New Zealand Christmas Tree	LM
<i>Olea europaea</i> 'Wilsonii'	Wilson Olive	L
<i>Pinus canariensis</i>	Canary Island Pine	L
<i>Pinus coulteri</i>	Coulter Pine	L
<i>Pinus eldarica</i>	Afghan Pine	L
<i>Pinus halepensis</i>	Aleppo Pine	AL
<i>Pinus pinea</i>	Italian Stone Pine	L
<i>Pinus radiata</i>	Monterey Pine	AL
<i>Pinus sabiniana</i>	Digger Pine	L
<i>Pinus torreyana</i>	Torrey Pine	AL
<i>Pittosporum phylliraeoides</i>	Willow Pittosporum	L
<i>Platanus racemosa</i>	Western Sycamore	M

**Table A-1
Plant Palette**

AL	Adapted to region	
L	Low supplemental water needs	
LM	Low to moderate supplemental water needs	
M	Moderate supplemental water needs	
Botanical (Latin) Name	Common Name	Estimated Water Needs in Coastal California
<i>Prunus caroliniana</i>	Carolina Laurel Cherry	L
<i>Prunus lyonii</i>	Catalina Cherry	AL
<i>Punica granatum</i> & cvs	Pomegranate	L
<i>Quercus agrifolia</i>	Coast Live Oak	AL
<i>Quercus douglasii</i>	Blue Oak	AL
<i>Quercus engelmannii</i>	Mesa Oak	AL
<i>Quercus ilex</i>	Holly Oak	L
<i>Quercus lobata</i>	Valley Oak	L
<i>Quercus suber</i>	Cork Oak	L
<i>Rhus lancea</i>	African Sumac	L
<i>Robinia ambigua</i> & cvs	Locust	L
<i>Robinia pseudoacacia</i>	Black Locust	L
<i>Sambucus caerulea</i>	Blue Elderberry	AL
<i>Schinus molle</i>	Pepper Tree	AL
<i>Schinus polygamus</i>	Peruvian Pepper	L
<i>Schinus terebinthifolius</i>	Brazilian Pepper	LM
<i>Tamarix aphylla</i>	Athel Tree	AL
<i>Tipuana tipu</i>	Tipu Tree	M
<i>Tristania conferta</i> & cv	Brisbane Box	M
<i>Vitex angus-castus</i>	Chaste Tree	L
<i>Xylosma congestum</i>	Shiny Xylosma	LM
<i>Yucca gloriosa</i>	Spanish Dagger	L
PALMS		
<i>Brahea armata</i>	Blue Hesper Palm	L
<i>Brahea edulis</i>	Guadalupe Palm	L
<i>Butia capitata</i>	Pindo Palm	L
<i>Chamaerops humilis</i>	Mediterranean Fan Palm	L
<i>Phoenix canariensis</i>	Canary Island Date Palm	L
<i>Phoenix dactylifera</i>	Date Palm	L
<i>Trachycarpus fortunei</i>	Windmill Palm	L
<i>Washingtonia filifera</i>	California Fan Palm	L
<i>Washingtonia robusta</i>	Mexican Fan Palm	L
SHRUBS AND VINES		
<i>Acacia cultriformis</i>	Knife Acacia	AL
<i>Acacia cyclops</i>	Western Coastal Wattle	AL
<i>Acacia farnesiana</i>	Sweet Acacia	L
<i>Acacia longifolia</i>	Sydney Golden Wattle	AL

**Table A-1
Plant Palette**

AL	Adapted to region	
L	Low supplemental water needs	
LM	Low to moderate supplemental water needs	
M	Moderate supplemental water needs	
Botanical (Latin) Name	Common Name	Estimated Water Needs in Coastal California
<i>Acacia retinodes</i>	Water Wattle	L
<i>Aesculus californica</i>	California Buckeye	AL
<i>Alyogyne huegelii</i>	Blue Hibiscus	L
<i>Anisodonteia hypomandarum</i>	Dwarf Pink Hibiscus	LM
<i>Arbutus unedo</i> 'Compacta'	Dwarf Strawberry Tree	L
<i>Arctostaphylos densiflora</i> & cvs	Sonoma Manzanita	L
<i>Arctostaphylos edmundsii</i>	Little Sur Manzanita	L
<i>Arctostaphylos hookeri</i>	Monterey Manzanita	L
<i>Artemisia arborescens</i>	Shrubby Wormwood	AL
<i>Artemisia californica</i> & cvs	California Sagebrush	AL
<i>Artemisia</i> 'Powis Castle'	NCN	AL
<i>Atriplex l. var. breweri</i>	Brewer Saltbush	L
<i>Baccharis p. consanguinea</i>	Chaparral Broom	AL
<i>Baccharis sarothroides</i>	Desert Broom	L
<i>Bougainvillea</i> species & cvs	Bougainvillea	LM
<i>Bougainvillea</i> x 'Oo-La-La' TM	Oo-la-la Bougainvillea	M
<i>Caesalpinia</i> species	Bird-of-paradise Bush	L
<i>Callistemon citrinus</i>	Lemon Bottlebrush	L
<i>Callistemon rigidus</i>	Stiff Bottlebrush	L
<i>Calocephalus brownii</i>	Cushion Bush	LM
<i>Carpenteria californica</i>	Bush Anemone	L
<i>Cassia artemisioides</i>	Feathery Cassia	L
<i>Cassia nemophila</i>	Desert Cassia	L
<i>Cassia odorata</i>	Spreading Cassia	L
<i>Cassia phyllodinea</i>	Silvery Cassia	L
<i>Ceanothus arboreus</i>	Feltleaf Ceanothus	L
<i>Ceanothus</i> 'Concha'	NCN	L
<i>Ceanothus</i> 'Dark Star'	NCN	AL
<i>Ceanothus</i> 'Frosty Blue'	NCN	AL
<i>Ceanothus gloriosus</i> & cvs	Point Reyes Ceanothus	AL
<i>Ceanothus griseus</i> & cvs	Carmel Ceanothus	AL
<i>Ceanothus impressus</i>	Santa Barbara Ceanothus	L
<i>Ceanothus</i> 'Joyce Coulter'	NCN	AL
<i>Ceanothus</i> 'Julia Phelps'	NCN	AL
<i>Ceanothus maritimus</i> & cvs	Maritime Ceanothus	AL
<i>Ceanothus</i> 'Ray Hartman'	NCN	AL
<i>Ceanothus rigidus</i> & cvs	Monterey Ceanothus	AL

**Table A-1
Plant Palette**

Botanical (Latin) Name	Common Name	Estimated Water Needs in Coastal California
AL	Adapted to region	
L	Low supplemental water needs	
LM	Low to moderate supplemental water needs	
M	Moderate supplemental water needs	
Ceanothus thyrsiflorus & cvs	Blue Blossom Ceanothus	AL
Ceanothus 'Wheeler Canyon'	NCN	L
Cercis occidentalis	Western Redbud	L
Chamelaucium uncinatum	Geraldton Wax Flower	L
Chilopsis linearis	Desert Willow	L
Cistus species & cvs	Rockrose	L
Cleome isomeris	Bladderpod	AL
Comarostaphylis diversifolia	Summer Holly	AL
Correa species & cvs	Correa	L
Cotoneaster apiculatus	Cranberry Cotoneaster	LM
Cotoneaster buxifolius	NCN	L
Cotoneaster congestus	NCN	L
Cotoneaster horizontalis	Rock Cotoneaster	L
Cotoneaster lacteus	Red Clusterberry	L
Cotoneaster salicifolius	Willowleaf Cotoneaster	L
Dalea frutescens	Black Dalea	LM
Dalea pulchra	Indigo Bush	LM
Dendromecon species	Bush Poppy	AL
Dodonaea viscosa	Hopseed Bush	LM
Echium fastuosum	Pride of Madeira	L
Elaeagnus pungens	Silverberry	L
Encelia californica	California Encelia	AL
Eriogonum arborescens	Santa Cruz Island Buckwheat	AL
Eriogonum cinereum	Asyleaf Buckwheat	AL
Eriogonum fasciculatum	Common Buckwheat	AL
Eriogonum giganteum	St. Catherine's Lace	AL
Eriogonum parvifolium	Coastal Buckwheat	AL
Eucalyptus lehmannii	Bushy Yate	AL
Feijoa sellowiana	Pineapple Guava	L
Fremontodendron species & cvs	California Flannel Bush	AL
Galvezia speciosa	Island Bush-snapdragon	L
Garrya elliptica	Coast Silktassel	AL
Grevillea species & cvs	Grevillea	L
Hakea suaveolens	Sweet-scented Hakea	L
Hardenbergia violacea	False Sarsaparilla	L
Heteromeles arbutifolia	Toyon	AL
Hibiscus syriacus	Rose of Sharon	L

**Table A-1
Plant Palette**

AL Adapted to region L Low supplemental water needs LM Low to moderate supplemental water needs M Moderate supplemental water needs		
Botanical (Latin) Name	Common Name	Estimated Water Needs in Coastal California
Iva hayesiana	Hayes Iva	AL
Jasminum species	Jasmine	LM
Juniperus chinensis & cvs	NCN	L
Juniperus sabina & cvs	Savin Juniper	L
Juniperus scopulorum & cvs	Rocky Mountain Juniper	L
Justicia californica	Chuparosa	L
Keckiella species	Native Penstemon	AL
Lagerstroemia indica & cvs	Compact Crape Myrtle	L
Lantana camara	Yellow Sage	LM
Lavandula species & cvs	Lavender	L
Lavatera species	Mallow	AL
Leonotis leonurus	Lion's Tail	L
Leptospermum laevigatum	Australian Tea Tree	AL
Leptospermum scoparium	New Zealand Tea Tree	LM
Leucophyllum species & cvs	Cenizo	L
Lupinus albifrons	Silver Lupine	L
Lupinus arboreus	Coastal Bush Lupine	AL
Macfadyena unguis-cati	Cat's Claw	L
Mahonia aquifolium	Oregon Grape	M
Mahonia 'Golden Abundance'	NCN	L
Mahonia nevinii	Nevin Mahonia	L
Mahonia pinnata & cvs	California Grape	L
Malosma laurina	Laurel Sumac	AL
Melaleuca armillaris	Drooping Melaleuca	L
Melaleuca nesophila	Pink Melaleuca	AL
Metrosideros excelsus	New Zealand Christmas Tree	LM
Myoporum laetum & cvs	NCN	L
Myrica californica	Pacific Wax Myrtle	LM
Myrtus communis & cvs	True Myrtle	L
Nerium oleander & cvs	Oleander	AL
Philodendron xanadu	Philodendron	M
Phormium tenax 'Bronze'	Bronze New Zealand Flax	L
Plecostachys serpyllifolia	NCN	L
Plumbago auriculata	Cape Plumbago	L
Polygonum aubertii	Silver Lace Vine	L
Prunus caroliniana cvs	Carolina Laurel Cherry	L
Prunus ilicifolia	Hollyleaf Cherry	AL

**Table A-1
Plant Palette**

Botanical (Latin) Name	Common Name	Estimated Water Needs in Coastal California
AL	Adapted to region	
L	Low supplemental water needs	
LM	Low to moderate supplemental water needs	
M	Moderate supplemental water needs	
<i>Prunus lyonii</i>	Catalina Cherry	AL
<i>Punica granatum</i> & cvs	Pomegranate	L
<i>Pyracantha</i> species & cvs	Firethorn	L
<i>Rhamnus alaternus</i>	Italian Buckthorn	L
<i>Rhamnus californica</i>	California Coffeeberry	L
<i>Rhamnus crocea</i> & var.	Redberry	AL
<i>Rhamphiolepis indica</i> & cvs	India Hawthorn	L
<i>Rhamphiolepis</i> 'Majestic Beauty'	NCN	L
<i>Rhamphiolepis umbellata</i> & cv	Yedda Hawthorn	L
<i>Rhus integrifolia</i>	Lemonade Berry	AL
<i>Rhus ovata</i>	Sugar Bush	AL
<i>Ribes aureum</i>	Golden Currant	AL
<i>Ribes indecorum</i>	White-flowered Currant	AL
<i>Ribes malvaceum</i>	Chaparral Currant	AL
<i>Ribes speciosum</i>	Fuchsia-flowering Gooseberry	LM
<i>Rosa banksiae</i>	Lady Banks' Rose	LM
<i>Rosa meidiland</i> series 'Fire'	Fire Meidiland Rose	M
<i>Rosmarinus officinalis</i> & cvs	Rosemary	L
<i>Salvia apiana</i>	White Sage	AL
<i>Salvia chamaedryoides</i>	Blue Sage	L
<i>Salvia clevelandii</i> & cvs	Cleveland Sage	AL
<i>Salvia greggii</i>	Autumn Sage	L
<i>Salvia leucantha</i>	Mexican Bush Sage	L
<i>Salvia leucophylla</i>	Purple Sage	AL
<i>Salvia mellifera</i> & cvs	Black Sage	AL
<i>Sambucus caerulea</i>	Blue Elderberry	AL
<i>Santolina</i> species	Lavender Cotton	L
<i>Schinus molle</i>	Pepper Tree	AL
<i>Schinus terebinthifolius</i>	Brazilian Pepper	LM
<i>Simmondsia chinensis</i>	Jojoba	L
<i>Sollya heterophylla</i>	Australian Blue-bell Creeper	L
<i>Trachelospermum jasminoides</i>	Star Jasmine	M
<i>Tecomaria capensis</i>	Cape Honeysuckle	LM
<i>Teucrium chamaedrys</i>	NCN	LM
<i>Teucrium fruticans</i>	Bush Germander	L
<i>Trichostema lanatum</i>	Woolly Blue Curls	AL
<i>Vitex agnus-castus</i>	Chaste Tree	L

**Table A-1
Plant Palette**

AL	Adapted to region	
L	Low supplemental water needs	
LM	Low to moderate supplemental water needs	
M	Moderate supplemental water needs	
Botanical (Latin) Name	Common Name	Estimated Water Needs in Coastal California
Westringia species	NCN	L
Xylosma congestum	Shiny Xylosma	LM
GROUND COVERS		
Acacia redolens & cvs	NCN	L
Achillea millefolium	Common Yarrow	L
Acorus gramineus	Sweet Flag	LM
Adenostoma fasciculatum 'Prostrata'	Chamise	L
Aptenia 'Red Apple'	NCN	L
Arctostaphylos edmundsii & cvs	Little Sur Manzanita	L
Arctostaphylos 'Emerald Carpet'	NCN	L
Arctostaphylos hookeri & cvs	Monterey Manzanita	L
Arctostaphylos 'Pacific Mist'	NCN	L
Arctotheca calendula	Cape Weed	LM
Artemisia californica & cvs	Prostrate California Sagebrush	AL
Atriplex glauca	NCN	AL
Atriplex semibaccata	Creeping Saltbush	AL
Baccharis 'Centennial'	NCN	L
Bougainvillea cultivars	Bougainvillea	L
Carpobrotus species	Sea Fig	AL
Ceanothus gloriosus & cvs	Point Reyes Ceanothus	L
Ceanothus g. var. horizontalis	Carmel Creeper	L
Ceanothus g. var. h. 'Yankee Point'	NCN	L
Ceanothus 'Joyce Coulter'	NCN	L
Ceanothus maritimus & cvs	Maritime Ceanothus	L
Cephalophyllum 'Red Spike'	Red Spike Ice Plant	L
Cistus salviifolius	Sageleaf Rockrose	L
Cistus 'Sunset'	NCN	L
Coprosma kirkii	NCN	L
Coprosma 'Verde Vista'	NCN	L
Cotoneaster adpressus	Creeping Cotoneaster	L
Cotoneaster dammeri & cvs	NCN	L
Cotoneaster horizontalis	Rock Cotoneaster	L
Cotoneaster salicifolius 'Repens'	NCN	L
Crassula multicaeva	NCN	L
Delosperma 'Alba'	White Trailing Ice Plant	L
Drosanthemum floribundum	Rosea Ice Plant	L
Dymondia margaretae	NCN	L

**Table A-1
Plant Palette**

AL	Adapted to region	
L	Low supplemental water needs	
LM	Low to moderate supplemental water needs	
M	Moderate supplemental water needs	
Botanical (Latin) Name	Common Name	Estimated Water Needs in Coastal California
Eriogonum fasciculatum & cvs	Common Buckwheat	AL
Festuca ovina glauca	Blue Fescue	L
Gazania species & cvs	Gazania	LM
Hardenbergia violacea & cvs	False Sarsaparilla	L
Iva hayesiana	Hayes Iva	AL
Juniperus chinensis & cvs	NCN	L
Juniperus conferta	Shore Juniper	L
Juniperus horizontalis & cvs	Creeping Juniper	L
Juniperus sabina & cvs	Tamarix Juniper	L
Lampranthus species	Ice Plant	L
Lantana montevidensis & cvs	Trailing Lantana	L
Lonicera japonica 'Halliana'	Hall's Japanese Honeysuckle	LM
Mahonia aquifolium 'Compacta'	Compact Oregon Grape	LM
Mahonia repens	Creeping Mahonia	L
Maleophora species	Ice Plant	L
Myoporum hybrids	NCN	L
Myoporum parvifolium & cvs	Prostrate Myoporum	L
Nassella tenuissima	Texas Needle Grass	L
Pacific Meadow Mix Creeping Fescue Blend		M
Pyracantha species & cvs	Firethorn	L
Ribes viburnifolium	Evergreen Currant	L
Rosmarinus officinalis & cvs	Prostrate Rosemary	L
Salvia mellifera & cvs	Prostrate Black Sage	AL
Scaevola 'Mauve Clusters'	NCN	L
Sedum species	Stonecrop	L
Senecio mandraliscae	NCN	L
Teucrium cossonii	NCN	LM
Verbena species & cvs	Verbena	L
PERENNIALS		
Achillea species & cvs	Yarrow	L
Anigozanthos species & cvs	Kangaroo Paw	LM
Armeria maritima	Sea Pink	M
Artemisia pycnocephala & cvs	Sandhill Sage	LM
Asteriscus species	NCN	L
Brachycome multifida	Cut-leaf Daisy	LM
Centaurea species	Dusty Miller	L
Centranthus ruber	Red Valerian	AL

**Table A-1
Plant Palette**

Botanical (Latin) Name	Common Name	Estimated Water Needs in Coastal California
AL	Adapted to region	
L	Low supplemental water needs	
LM	Low to moderate supplemental water needs	
M	Moderate supplemental water needs	
Cheiranthus 'Bowles Mauve'	Shrubby Wallflower	LM
Convolvulus cneorum	Bush Morning Glory	L
Convolvulus mauritanicus	Ground Morning Glory	L
Coreopsis species & cvs	Coreopsis	L
Cortaderia selloana	Pampas Grass	L
Dietes species & cvs	Fortnight Lily	L
Diplacus species & hybrids	Monkey Flower	AL
Elymus species & cvs	Giant Wild Rye	L
Epilobium species & cvs	California Fuchsia	L
Erigeron glaucus & cvs	Beach Aster	L
Erigeron karvinskianus	Mexican Daisy	LM
Eriogonum crocatum	Conejo Buckwheat	L
Eriogonum grande ssp. rubescens	Red Buckwheat	L
Eriogonum umbellatum & cv	Sulfur Flower	LM
Eschscholzia californica	California Poppy	AL
Euphorbia milii	Crown of Thorns	L
Euphorbia rigida	NCN	L
Euryops pectinatus & cv	Euryops	L
Gaillardia grandiflora	Blanket Flower	L
Gaura lindheimeri	Gaura	LM
Helianthemum nummularium & cvs	Sunrose	LM
Helictotrichon sempervirens	Blue Oat Grass	L
Hemerocallis fulva 'Kwanso'	Daylily	M
Heuchera species & cvs	Coral Bells	M
Iris douglasiana & cvs	Pacific Coast Iris	LM
Kniphofia uvaria & cvs	Red-hot Poker	L
Limonium perezii	Sea Lavender	AL
Lobelia laxiflora	Mexican Bush Lobelia	L
Muhlenbergia species	NCN	L
Oenothera species	Mexican Evening Primrose	L
Pennisetum setaceum & cv	Fountain Grass	L
Penstemon species & cvs	Western Natives	L
Perovskia atriplicifolia	Russian Sage	L
Phlomis species	NCN	L
Phormium tenax & cvs	New Zealand Flax	L
Romneya coulteri & cvs	Matilija Poppy	AL
Rosmarinus spp	Rosemary	L

**Table A-1
Plant Palette**

AL	Adapted to region	
L	Low supplemental water needs	
LM	Low to moderate supplemental water needs	
M	Moderate supplemental water needs	
Botanical (Latin) Name	Common Name	Estimated Water Needs in Coastal California
Salvia species & cvs	Sage	AL
Senecio cineraria	Dusty Miller	L
Sisyrinchium bellum	Blue-eyed Grass	AL
Stachys byzantina	Lamb's Ear	LM
Strelitzia reginae	Bird Of Paradise	AL
Tagetes lemmonii	Mountain Marigold	L
Thymus species & cvs	Thyme	LM
Tulbaghia violacea & cv	Society Garlic	M
Verbena species & cvs	Verbena	L
Xanthorrhoea species	Grass Tree	L
AGAVE, CACTI, SUCCULENTS, AND YUCCA		
Aeonium species & cvs	NCN	L
Agave americana	Century Plant	L
Agave attenuata	Foxtail Agave	L
Agave shawii	Shaw's Century Plant	L
Agave victoriae-reginae	NCN	L
Agave vilmoriniana	Octopus Agave	L
Aloe arborescens	Tree Aloe	AL
Aloe bainesii	NCN	AL
Aloe candelabrum	Candelabra Aloe	L
Aloe ciliaris	NCN	L
Aloe ferox	NCN	L
Aloe marlothii	NCN	L
Aloe nobilis	NCN	L
Aloe plicatilis	NCN	L
Aloe striata	Coral Aloe	L
Aloe vera	Medicinal Aloe	L
Beaucarnea recurvata	Ponytail Tree	L
Cereus peruvianus	Peruvian Apple	L
Cordyline australis	Dracaena Palm	L
Cotyledon species	NCN	L
Crassula species	Jade Plant	L
Dasyliirion species	Desert Spoon	L
Dracaena draco	Dragon Tree	L
Dudleya species	Live-forever	AL
Echeveria species	Echeveria	L

**Table A-1
Plant Palette**

AL	Adapted to region	
L	Low supplemental water needs	
LM	Low to moderate supplemental water needs	
M	Moderate supplemental water needs	
Botanical (Latin) Name	Common Name	Estimated Water Needs in Coastal California
Euphorbia ingens	Candelabra Tree	L
Euphorbia tirucalli	Milkbush	L
Hesperaloe parviflora	Red Yucca	L
Kalanchoe species	NCN	L
Nolina species	Bear Grass	L
Opuntia species	Prickly Pear, Cholla	L
Portulacaria afra	Elephant's Food	L
Yucca aloifolia	Spanish Bayonet	L
Yucca gloriosa	Spanish Dagger	L
Yucca whipplei	Our Lord's Candle	AL
Source: Excerpted from Landscape Plants for Western Regions by Bob Perry.		

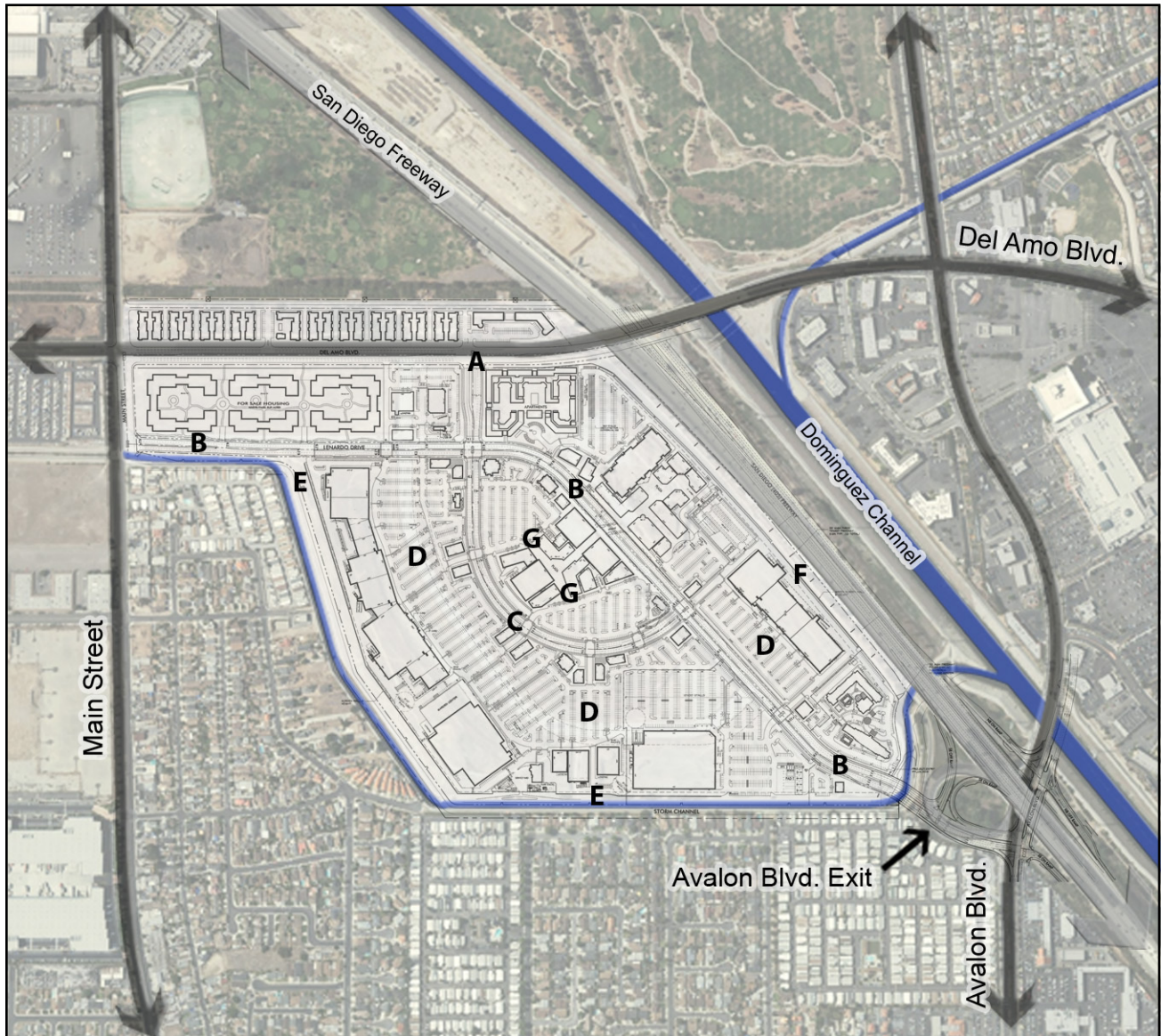
**APPENDIX B
LIGHTING PALETTE**

APPENDICES

This page intentionally left blank.

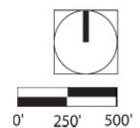
THE BOULEVARDS AT SOUTH BAY LIGHTING PALETTE

The proposed palette of lighting fixtures, presented below, demonstrates examples of systems that would be in compliance with the design guidelines and to provide examples of the architectural scale and quality of these materials. These fixtures selections should meet the performance criteria of the guidelines while providing an attractive complement to the building and landscape. For each building-type and roadway component within the proposed development, examples of fixture types that would be applicable are illustrated below. These fixtures represent examples of lighting products that will satisfy the guidelines criteria for task illuminance, light trespass, and glare.



Legend

- | | |
|-----------------------------|--|
| A. Typical Del Amo Entrance | E. Typical Residential/Project Interface |
| B. Typical Corridor Road | F. I-405/Project Interface |
| C. Typical Loop Road | G. Entertainment Diveway Accent |
| D. Typical Parking Lots | |



The following example is applicable to:

- Section A - Typical Del Amo Entry
- Section C - Typical Loop Road
- Section E - Typical Residential/Project Interface
- Section F - 405 Freeway Edge/Project Interface



The following example is applicable to:

- Section B - Typical Corridor Road



The following example is applicable to:

Section D - Typical Parking Lots



The following example is applicable to:

Section G - Entertainment Driveway Accent



APPENDICES

This page intentionally left blank.

APPENDIX C
CONSISTENCY ANALYSIS

APPENDICES

This page intentionally left blank.

**Table C-1
Consistency Analysis**

Relevant Policy		Analysis of Project Consistency
Land Use Element (2004)		
LU 4.1	Direct Redevelopment Agency investments to those economic activities and locations with the greatest potential economic return.	The proposed Project would convert a non productive site to a useful one through site remediation. It would add economic development within the central part of the City and serve as a gateway project. Also, with the South Bay Pavilion, the proposed Project would establish a large, clearly identified area of regionally serving economic activity, and serve the needs of the local Carson Community.
LU 5.1	Coordinate Redevelopment and Planning activities and resources to maximize commercial opportunities.	The proposed Project is being developed in Redevelopment Project Area No. One, pursuant to the Redevelopment Plan for that area. It is also being developed pursuant to numerous General Plan policies as discussed in the remainder of the Table.
LU 5.2	Implement and expand strategies to market, attract, and/or retain retail commercial areas and encourage businesses to participate.	The proposed Project would establish the Project site as a signature project along the I 405 Freeway, well located with regard to other freeways. The Project would offer high visibility in a new, planned development. It would include entertainment uses to attract visitors and meet the needs of local population. Within specific retail sectors, Project development is forecasted to have a short-term negative effect upon existing retail uses within the market area served by the proposed Project. It is further forecasted that this impact would be alleviated in the mid-term (i.e., by 2020) as the local market grows and matures.
LU 5.3	Identify unique economic opportunities, such as niche markets, that will allow the City to capitalize on its location, its cultural diversity, and the tourism industry in the region.	The proposed Project would provide a regional facility in a mixed use development, visibly noticeable along a major freeway corridor. The large scale of the Project and the proposed mix of visitor and local serving uses would create an opportunity to support a large range of uses, including specialized markets.
LU 6.2	Achieve a sustainable land use balance through provision of incentives for desired uses; coordination of land use and circulation patterns; and promotion of a variety of housing types and affordability.	The proposed Project would occur pursuant to the Area One Redevelopment Plan and its policies and opportunities. The proposed Project would include an internal circulation system that would be linked with the regional network and linked to new/improved freeway access at Avalon Boulevard. The Project's mitigation measures would include improvements to reduce impacts on the local road network. (Impacts would be reduced to less than significant levels, except at one location where impacts would be reduced, although not to a less than significant level.) The proposed Project would add up to 1,550 new housing units including both rental and ownership uses, thus adding to the range and mix of housing available in the City of Carson. Also, it would include affordable housing in accordance with the Redevelopment Plan and applicable law (the Agency would address affordable housing through an Owner Participation Agreement). Retail uses would serve both local (City residents) and regional populations. Within specific retail sectors, Project development is forecasted to have a short-term negative effect upon existing retail uses within the market area served by the proposed Project. It is further forecasted that this impact would be alleviated in the mid-term (i.e., by 2020) as the local market grows and matures.

**Table C-1
Consistency Analysis**

Relevant Policy	Analysis of Project Consistency
<p>LU 6.3 Consider establishing minimum land use density requirements in certain areas such as mixed-use zones to provide more efficient, consistent, and compatible development patterns while also promoting greater potential for pedestrian and transit oriented development.</p>	<p>The proposed Project would be implemented under a Specific Plan that allows for mixed use development in an efficient manner. A minimum floor area ratio of 1.5 is established for vertically mixed-use development. Density and height limits would allow for mid rise residential development including densities up to 60 units/acre. The Project includes provision for pedestrian and bicycle transit and can be linked to nearby public transit routes.</p>
<p>LU 6.4 Coordinate redevelopment and planning activities and resources to balance land uses, amenities, and civic facilities.</p>	<p>The proposed Project is being developed in Redevelopment Zone No. One, pursuant to the Redevelopment Plan for that area. It is also being developed pursuant to numerous General Plan policies as discussed in this Table. It is a mixed use development with visitor amenities; e.g., retail entertainment and residential uses. The conceptual Plan identifies numerous plazas to enhance the pedestrian experience.</p>
<p>LU 6.6 Attract land uses that generate revenue to the City of Carson, while maintaining a balance of other community needs such as housing, open space, and public facilities.</p>	<p>The proposed Project would include up to approximately 1,995,125 sq.ft. of commercial use that would be generating revenue to the City, as well as up to 1,550 housing units intermixed with plazas and open space.</p>
<p>LU 7.3 Promote the use of buffers between more intensive industrial uses and residential uses.</p>	<p>The proposed Project would include no industrial uses. New residential development would not be located adjacent to intensive industrial uses.</p>
<p>LU 8.1 Amend the Zoning Ordinance to provide for those Mixed Use areas identified on the General Plan Land Use Plan.</p>	<p>The Project site is designated for Mixed Use–Business Park in the 2004 General Plan. The Project would involve a General Plan Amendment and Zone change to integrate the proposed Specific Plan into the City’s principal planning documents. The Specific Plan would extend the General Plan’s mixed use designation to include residential development and allow for the appropriate mix of uses.</p>
<p>LU 8.3 Locate higher density residential uses in proximity to commercial centers in order to encourage pedestrian traffic and provide a consumer base for commercial uses.</p>	<p>The proposed Project includes high density residential development within a mixed use project containing up to 1,995,125 sq.ft. of commercial activity. The site design includes a pedestrian circulation system that connects the various components of the site.</p>
<p>LU 11.1 Target potential sites or areas for the development of signature projects.</p>	<p>Project implementation would create a signature project at a location that has been identified as being conducive to such a project, due to the site’s location along the I 405 Freeway, visual accessibility from the I 405 Freeway and its location within the central area of Carson.</p>
<p>LU 11.2 Encourage development of desired uses such as quality retail, restaurant uses, and entertainment in targeted areas.</p>	<p>The proposed Project would include up to 1,995,125 sq.ft. of commercial space. Based on the current Conceptual Plan, 81,125 sq.ft. is designated for restaurants, and 214,000 sq.ft. is designated for commercial recreation/entertainment.</p>
<p>LU 15.1 Encourage the location of housing, jobs, shopping, services and other activities within easy walking distance of each other.</p>	<p>The proposed Project includes mixed uses with up to 1,550 residential units and up to 1,995,125 sq.ft. within the Project site. The site design includes a pedestrian circulation system that connects the various components of the site thereby facilitating one type of pedestrian activity targeted by this policy.</p>
<p>LU 15.2 Maintain a diversity of housing types to enable citizens from a wide range of economic levels and age groups to live in Carson.</p>	<p>The proposed housing units, up to 1,550 units in total, would contribute to the range of housing opportunities within the City of Carson. It would add rental and for sale units that increase the diversity of available housing. Also, it would include affordable housing in accordance with the Redevelopment Plan and applicable law (the Agency would address affordable housing through an Owner Participation Agreement).</p>
<p>LU 15.3 Ensure that community transportation facilities are connected to a larger transit network.</p>	<p>The proposed Project’s internal circulation system would provide access to Main Street and Avalon Boulevard via Del Amo Boulevard, with accessibility to the I 405 Freeway via new ramps at Avalon Boulevard.</p>