



## CITY OF CARSON PLANNING DIVISION

### Guide to Single-Family Residential Front Yard Landscaping

The City requires that 50% of the front yard be landscaped in order to maintain an attractive residential neighborhood. Front yard area includes driveways, walkways, and landscape space. The landscape area must include live plant materials and decorative materials.

Live plant materials: trees, shrubs, grasses, groundcovers, and flowers should cover 75% of the landscape area within two years.

Decorative materials: bark, mulch, rocks, and decomposed granite are intended to enhance landscape and used in pathways, borders and other decorative features. If a weed barrier is used beneath the decorative materials, it must be manufactured to be permeable to air and water.

Hardscape: driveways and walkways are limited to 50% of the front yard area.

At the discretion of the Planning Manager, limited amounts of high-quality artificial turf may be allowed.

**DOES NOT MEET**



**DOES MEET**



**DOES NOT MEET**



**DOES MEET**



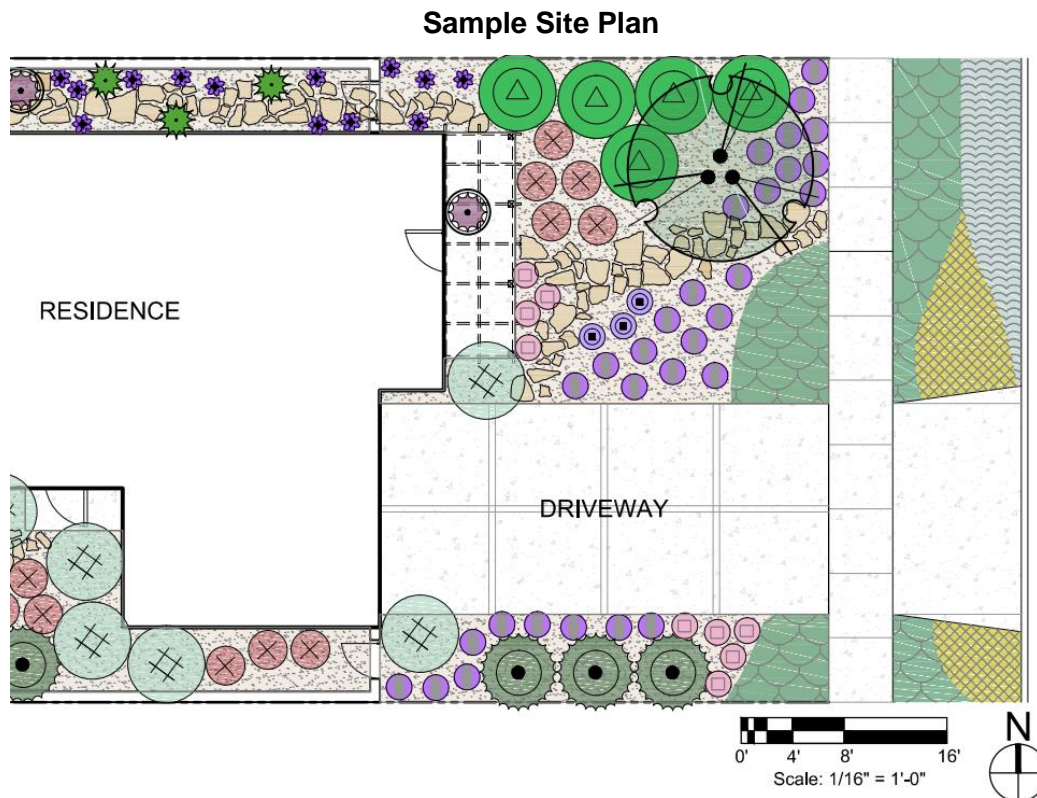
## Landscape Plan Guidelines

Please address the guidelines below and submit the following:

1. A detailed site plan on 8 ½" x 11" paper with the property dimensions and location of buildings depicting front yard landscape (plant size, plant type and location) and hardscape.

### General Guidelines:

- The use of drought-tolerant landscaping materials is encouraged.
- Organic mulch should be installed and maintained at a minimum depth of 2 inches and a maximum depth of 4 inches on all planted areas except where groundcover plants are fully established.
- Landscape design may integrate hardscape (paths, trails, courtyards, etc.), in accordance with the limits on hardscape provided in CMC Section 9162.3.
- California Friendly Landscaping trees and plants are encouraged. Information available at: <http://www.ladwp.cafriendlylandscaping.com/> and <http://www.bewaterwise.com/>



Reference: <http://www.ladwp.cafriendlylandscaping.com/> (Design for LA Basin)