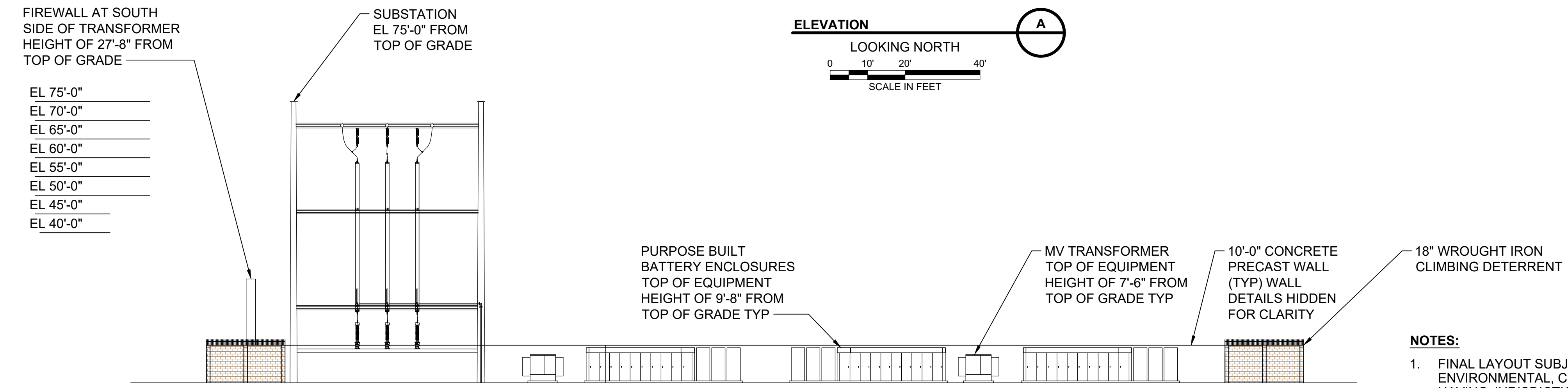
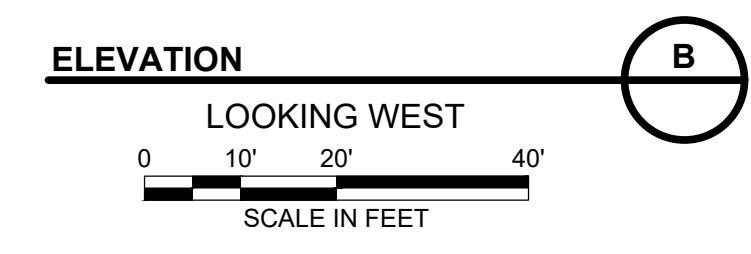


- EL 75'-0"
- EL 70'-0"
- EL 65'-0"
- EL 60'-0"
- EL 55'-0"
- EL 50'-0"
- EL 45'-0"
- EL 40'-0"
- EL 35'-0"
- EL 30'-0"



NOTES:
 1. FINAL LAYOUT SUBJECT TO CHANGE BASED ON FINAL ENVIRONMENTAL, CIVIL SETBACK DISTANCES, AND AUTHORITY HAVING JURISDICTION REQUIREMENTS.



PRELIMINARY - NOT FOR CONSTRUCTION

E	4/19/23	CCB	BG	ISSUED FOR CONDITIONAL USE PERMIT
D	12/20/22	BRS	SVL	ISSUED FOR CONDITIONAL USE PERMIT
C	9/20/22	BRS	SVL	ISSUED FOR CONDITIONAL USE PERMIT
B	1/28/22	BRS	SVL	ISSUED FOR CONDITIONAL USE PERMIT
A	10/28/21	BRS	SVL	ISSUED FOR CONDITIONAL USE PERMIT
no.	date	by	ckd	description

H	6/10/24	CCB	-	ISSUED FOR CONDITIONAL USE PERMIT
G	6/19/23	CCB	-	ISSUED FOR CONDITIONAL USE PERMIT
F	6/1/23	CCB	-	ISSUED FOR CONDITIONAL USE PERMIT
no.	date	by	ckd	description

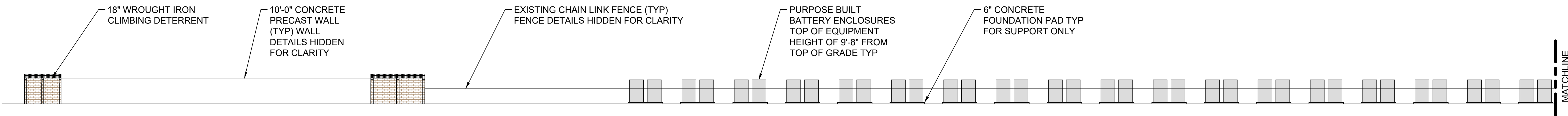
BURNS & MCDONNELL
 9400 WARD PARKWAY
 KANSAS CITY, MO 64114
 816-333-9400
 Burns & McDonnell Engineering Co., Inc.

designed: C. BRYAN
 detailed: C. BRYAN

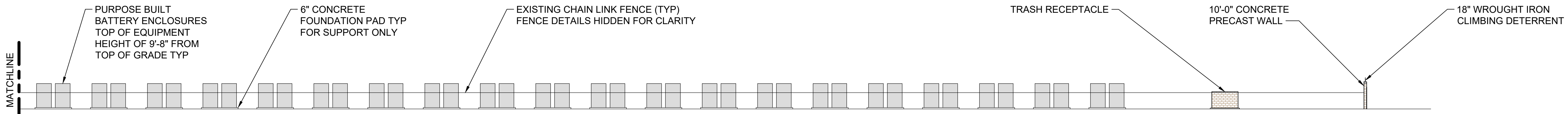
LOS ANGELES COUNTY, CALIFORNIA

AVOCET ENERGY STORAGE, LLC	
ELEVATION LAYOUT SHEET 1	
project	contract
drawing	rev.
EXS101 - H	
sheet	of sheets
file EXS101.dwg	

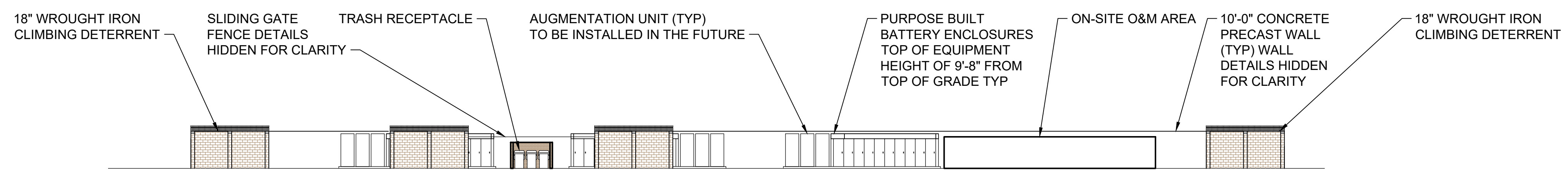
Scale For Microfilming
Millimeters
Inches



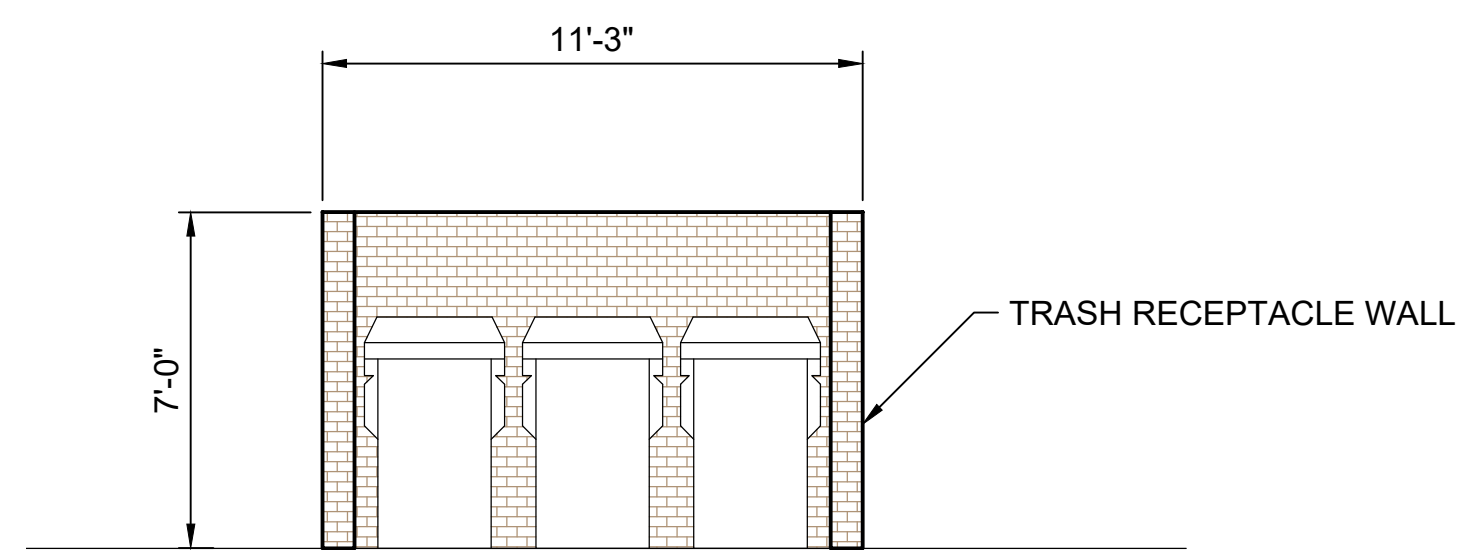
ELEVATION C
 LOOKING SOUTH
 0 10' 20' 40'
 SCALE IN FEET



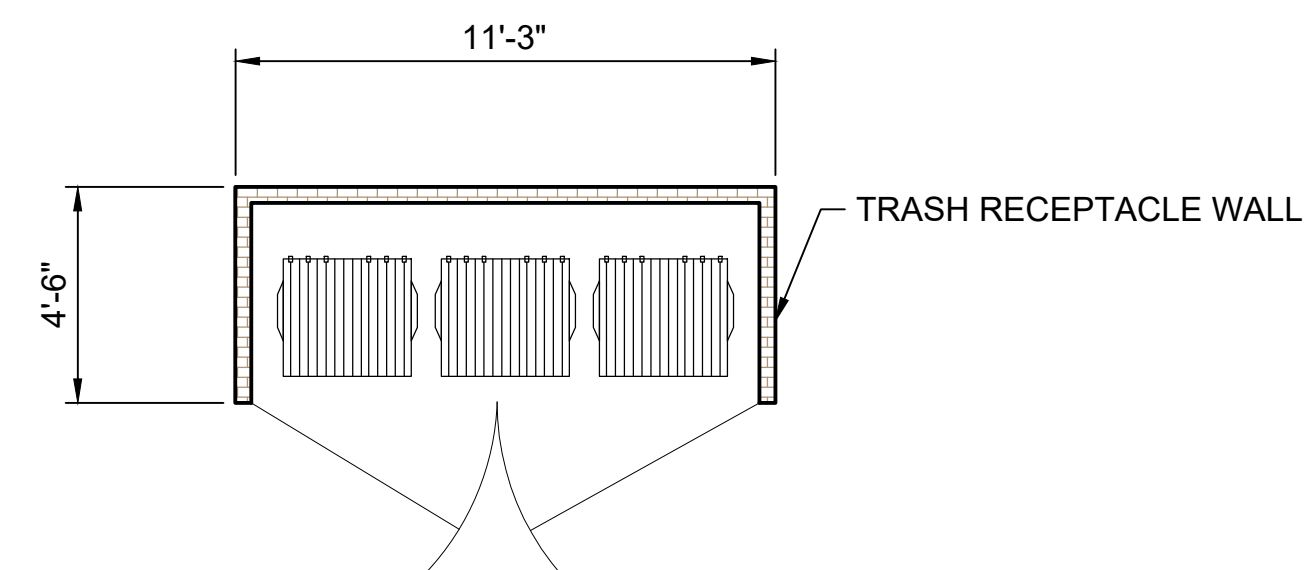
ELEVATION C
 LOOKING SOUTH
 0 10' 20' 40'
 SCALE IN FEET



ELEVATION D
 LOOKING EAST
 0 10' 20' 40'
 SCALE IN FEET



ELEVATION E
 TRASH CONTAINER
 VIEW LOOKING EAST
 0 2' 4' 8'
 SCALE IN FEET



ENLARGED VIEW F
 TRASH CONTAINER
 VIEW LOOKING PLAN
 0 2' 4' 8'
 SCALE IN FEET

NOTES:
 1. FINAL LAYOUT SUBJECT TO CHANGE BASED ON FINAL ENVIRONMENTAL, CIVIL SETBACK DISTANCES, AND AUTHORITY HAVING JURISDICTION REQUIREMENTS.

PRELIMINARY - NOT FOR CONSTRUCTION

E	4/19/23	CCB	BG	ISSUED FOR CONDITIONAL USE PERMIT					
D	12/20/22	BRS	SVL	ISSUED FOR CONDITIONAL USE PERMIT					
C	9/20/22	BRS	SVL	ISSUED FOR CONDITIONAL USE PERMIT	H	6/10/24	CCB	-	ISSUED FOR CONDITIONAL USE PERMIT
B	1/28/22	BRS	SVL	ISSUED FOR CONDITIONAL USE PERMIT	G	6/19/23	CCB	-	ISSUED FOR CONDITIONAL USE PERMIT
A	10/28/21	BRS	SVL	ISSUED FOR CONDITIONAL USE PERMIT	F	6/1/23	CCB	-	ISSUED FOR CONDITIONAL USE PERMIT
no.	date	by	ckd	description	no.	date	by	ckd	description

BURNS & MCDONNELL
 9400 WARD PARKWAY
 KANSAS CITY, MO 64114
 816-333-9400
 Burns & McDonnell Engineering Co., Inc.

designed: C. BRYAN
 detailed: C. BRYAN

LOS ANGELES COUNTY, CALIFORNIA

AVOCET ENERGY STORAGE, LLC
 ELEVATION LAYOUT
 SHEET 2

project	contract
drawing	rev.
EXS102 - H	
sheet	of sheets
file EXS102.dwg	

Millimeters
 Scale For Microfining
 Inches

A
 B
 C
 D
 E
 F
 G
 H