



ENTERANCE AREA
LANDSCAPING

ADJACENT
NORTH
PROPERTY

AVOCET ENERGY
STORAGE, LLC

DEADEND
STRUCTURE

BATTERY
ENCLOSURE

TRASH
RECEPTACLE

SLIDING GATE

PRECAST
CONCRETE
WALL

PROJECT
DRIVEWAY

ALAMEDA ST

Millimeters
Scale For Microfining
Inches

A
B
C
D
E
F
G
H

POST-DEVELOPMENT
PHOTOSIMULATION OF PROJECT SITE
FROM ALAMEDA STREET LOOKING EAST

**PRELIMINARY - NOT
FOR CONSTRUCTION**

C	06/19/23	EDV	ACR	ISSUED FOR CONDITIONAL USE PERMIT
B	06/01/23	EDV	ACR	ISSUED FOR CONDITIONAL USE PERMIT
A	5/1/23	SVL	ACR	ISSUED FOR CONDITIONAL USE PERMIT
no.	date	by	ckd	description

no.	date	by	ckd	description

**BURNS
MCDONNELL**

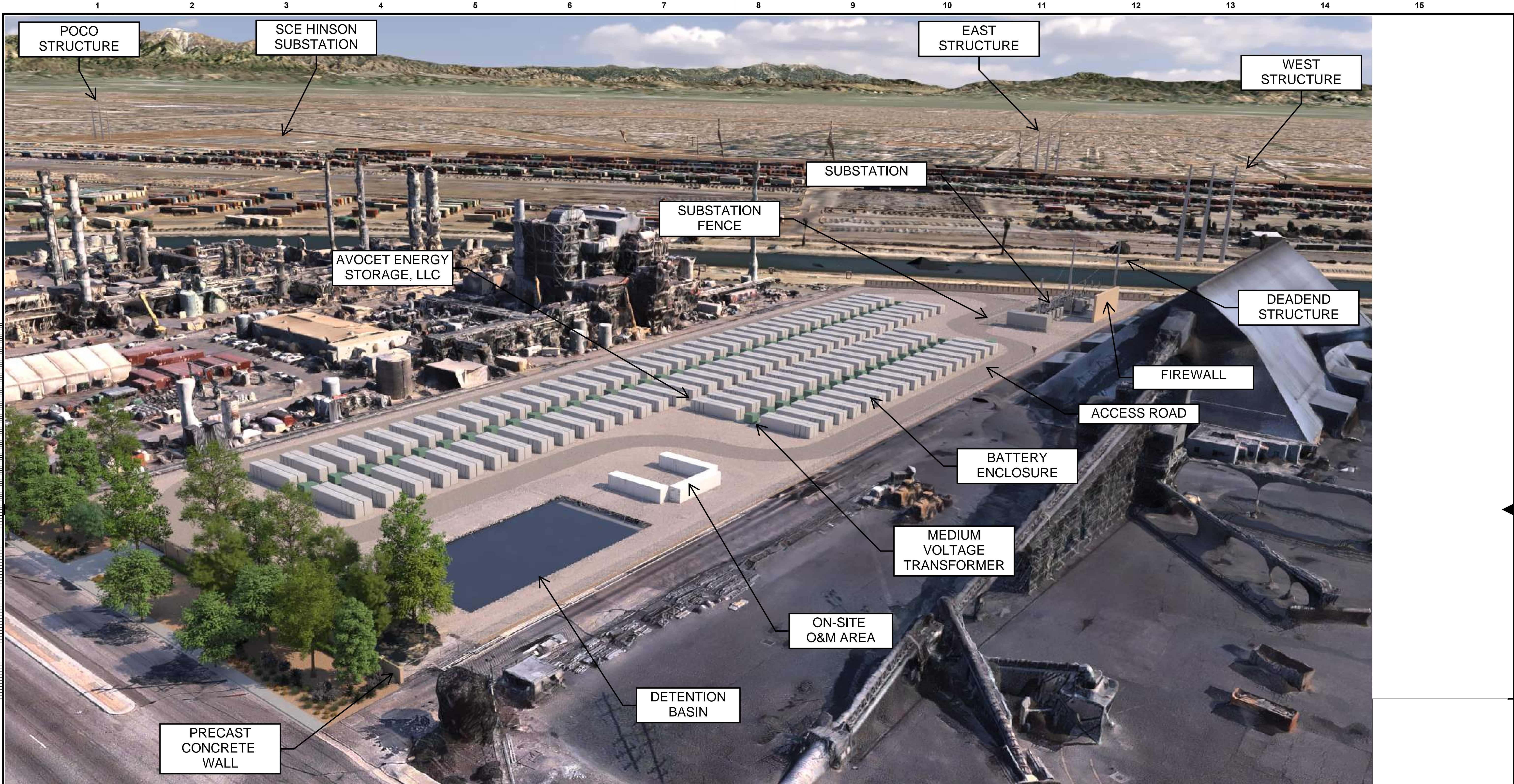
9400 WARD PARKWAY
KANSAS CITY, MO 64114
816-333-9400
Burns & McDonnell Engineering Co., Inc.

designed E. VILA | detailed E. VILA

TENASKA®

LOS ANGELES COUNTY, CALIFORNIA

AVOCET ENERGY STORAGE, LLC 3D RENDERING AND PHOTOSIMULATIONS	
project	contract
drawing	rev. C
sheet 1 of 1	sheets
file 3D Renderings AerialSite	



Millimeters

Inches

Scale For Microfining

POST-DEVELOPMENT
 AERIAL RENDERING LOOKING
 NORTHEAST FROM ABOVE
 DOMINGUEZ CHANNEL

**PRELIMINARY - NOT
 FOR CONSTRUCTION**

no.	date	by	ckd	description
C	06/19/23	EDV	ACR	ISSUED FOR CONDITIONAL USE PERMIT
B	06/01/23	EDV	ACR	ISSUED FOR CONDITIONAL USE PERMIT
A	5/1/23	SVL	ACR	ISSUED FOR CONDITIONAL USE PERMIT

**BURNS
 McDONNELL**

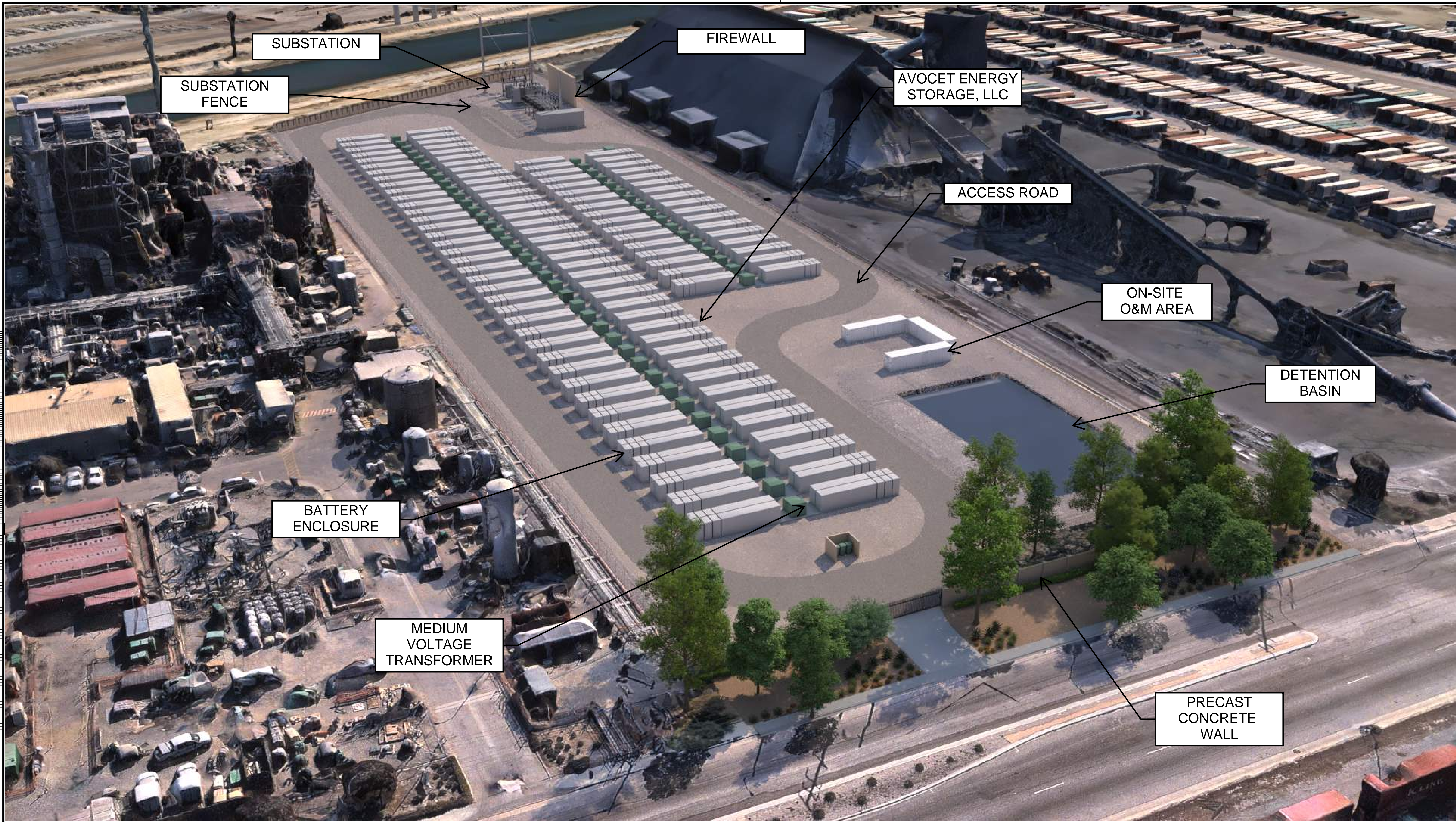
9400 WARD PARKWAY
 KANSAS CITY, MO 64114
 816-333-9400
 Burns & McDonnell Engineering Co., Inc.

designed E. VILA
 detailed E. VILA

TENASKA®

LOS ANGELES COUNTY, CALIFORNIA

AVOCET ENERGY STORAGE, LLC 3D RENDERING AND PHOTOSIMULATIONS	
project	contract
drawing	rev. C
sheet 1 of 1	sheets
file 3D Renderings AerialSite	



Millimeters
 Scale For Microfining
 Inches

POST-DEVELOPMENT
 AERIAL RENDERING LOOKING
 SOUTHEAST FROM ABOVE
 ALAMEDA STREET

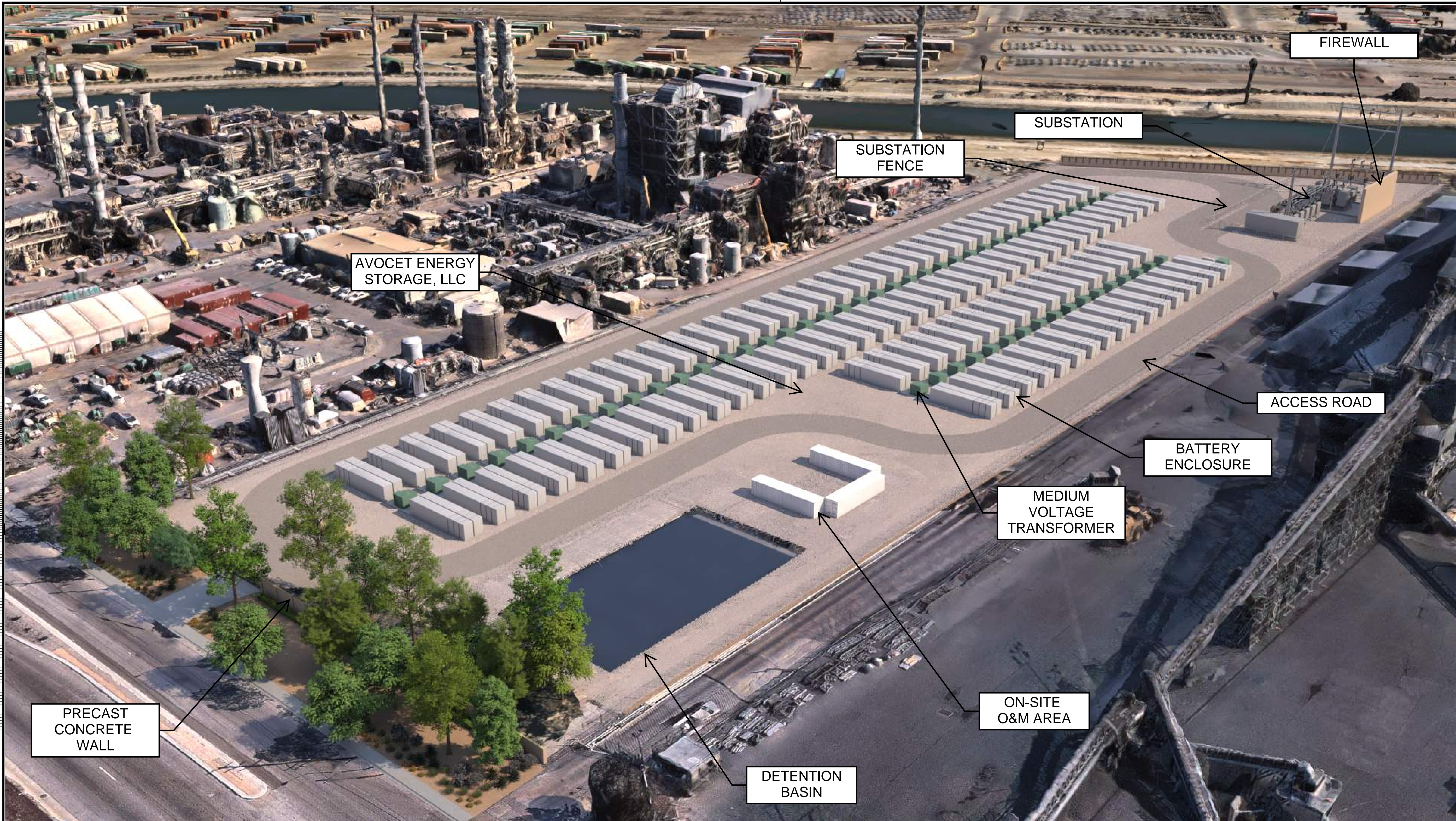
**PRELIMINARY - NOT
 FOR CONSTRUCTION**

no.	date	by	ckd	description	no.	date	by	ckd	description
C	06/19/23	EDV	ACR	ISSUED FOR CONDITIONAL USE PERMIT					
B	06/01/23	EDV	ACR	ISSUED FOR CONDITIONAL USE PERMIT					
A	5/1/23	SVL	ACR	ISSUED FOR CONDITIONAL USE PERMIT					

**BURNS
 McDONNELL**
 9400 WARD PARKWAY
 KANSAS CITY, MO 64114
 816-333-9400
 Burns & McDonnell Engineering Co., Inc.
 designed E. VILA | detailed E. VILA

TENASKA®
 LOS ANGELES COUNTY, CALIFORNIA

AVOCET ENERGY STORAGE, LLC 3D RENDERING AND PHOTOSIMULATIONS	
project	contract
drawing	rev. C
sheet 1 of 1	sheets
file 3D Renderings AerialSite	



Scale For Microfining

Inches

**POST-DEVELOPMENT
AERIAL RENDERING LOOKING
NORTHEAST FROM ABOVE
ALAMEDA STREET**

**PRELIMINARY - NOT
FOR CONSTRUCTION**

no.	date	by	ckd	description	no.	date	by	ckd	description
C	06/19/23	EDV	ACR	ISSUED FOR CONDITIONAL USE PERMIT					
B	06/01/23	EDV	ACR	ISSUED FOR CONDITIONAL USE PERMIT					
A	5/1/23	SVL	ACR	ISSUED FOR CONDITIONAL USE PERMIT					

**BURNS
MCDONNELL**

9400 WARD PARKWAY
KANSAS CITY, MO 64114
816-333-9400
Burns & McDonnell Engineering Co., Inc.

designed
E. VILA

detailed
E. VILA

TENASKA®

LOS ANGELES COUNTY, CALIFORNIA

AVOCET ENERGY STORAGE, LLC 3D RENDERING AND PHOTOSIMULATIONS	
project	contract
drawing	rev. C
sheet 1 of 1	sheets
file 3D Renderings AerialSite	



DETENTION
BASIN

AVOCET ENERGY
STORAGE, LLC

ON-SITE
O&M AREA

ACCESS ROAD

MEDIUM
VOLTAGE
TRANSFORMER

BATTERY
ENCLOSURE

FIREWALL

SUBSTATION
FENCE

PRECAST
CONCRETE
WALL

SUBSTATION

**POST-DEVELOPMENT
AERIAL RENDERING LOOKING
NORTHWEST FROM ABOVE
DOMINGUEZ CHANNEL**

**PRELIMINARY - NOT
FOR CONSTRUCTION**

no.	date	by	ckd	description
C	06/19/23	EDV	ACR	ISSUED FOR CONDITIONAL USE PERMIT
B	06/01/23	EDV	ACR	ISSUED FOR CONDITIONAL USE PERMIT
A	5/1/23	SVL	ACR	ISSUED FOR CONDITIONAL USE PERMIT

no.	date	by	ckd	description

**BURNS
MCDONNELL**

9400 WARD PARKWAY
KANSAS CITY, MO 64114
816-333-9400
Burns & McDonnell Engineering Co., Inc.

designed E. VILA | detailed E. VILA

TENASKA®

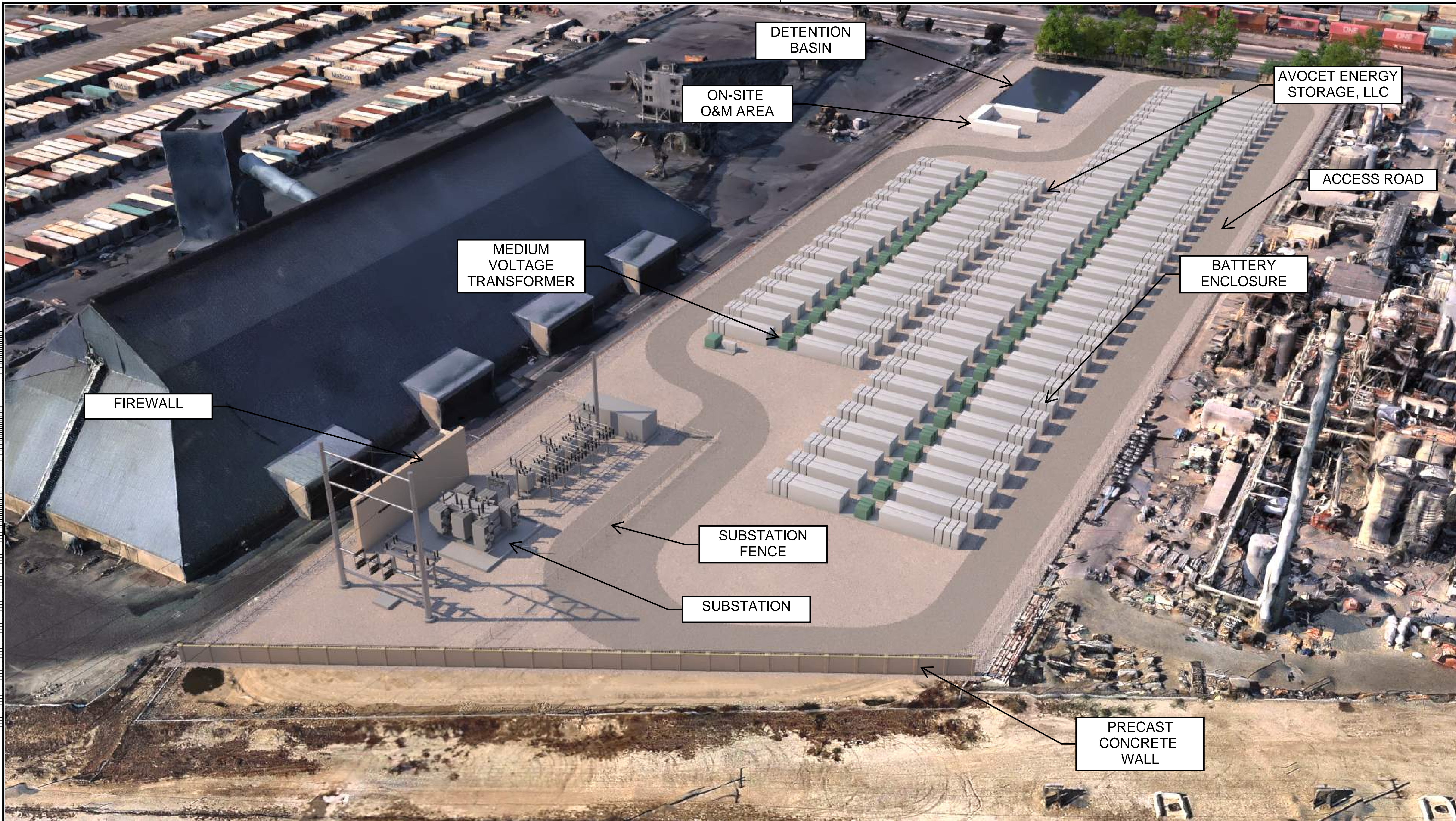
LOS ANGELES COUNTY, CALIFORNIA

AVOCET ENERGY STORAGE, LLC 3D RENDERING AND PHOTOSIMULATIONS	
project	contract
drawing	rev. C
sheet 1 of 1 sheets	file 3D Renderings AerialSite

Scale For Microfining
Millimeters
Inches

A
B
C
D
E
F
G
H

1 2 3 4 5 6 7 8 9 10 11 12 13 14 15



POST-DEVELOPMENT
AERIAL RENDERING LOOKING
SOUTHWEST FROM ABOVE
DOMINGUEZ CHANNEL

**PRELIMINARY - NOT
FOR CONSTRUCTION**

no.	date	by	ckd	description
C	06/19/23	EDV	ACR	ISSUED FOR CONDITIONAL USE PERMIT
B	06/01/23	EDV	ACR	ISSUED FOR CONDITIONAL USE PERMIT
A	5/1/23	SVL	ACR	ISSUED FOR CONDITIONAL USE PERMIT

no.	date	by	ckd	description

**BURNS
MCDONNELL**

9400 WARD PARKWAY
KANSAS CITY, MO 64114
816-333-9400
Burns & McDonnell Engineering Co., Inc.

designed E. VILA | detailed E. VILA

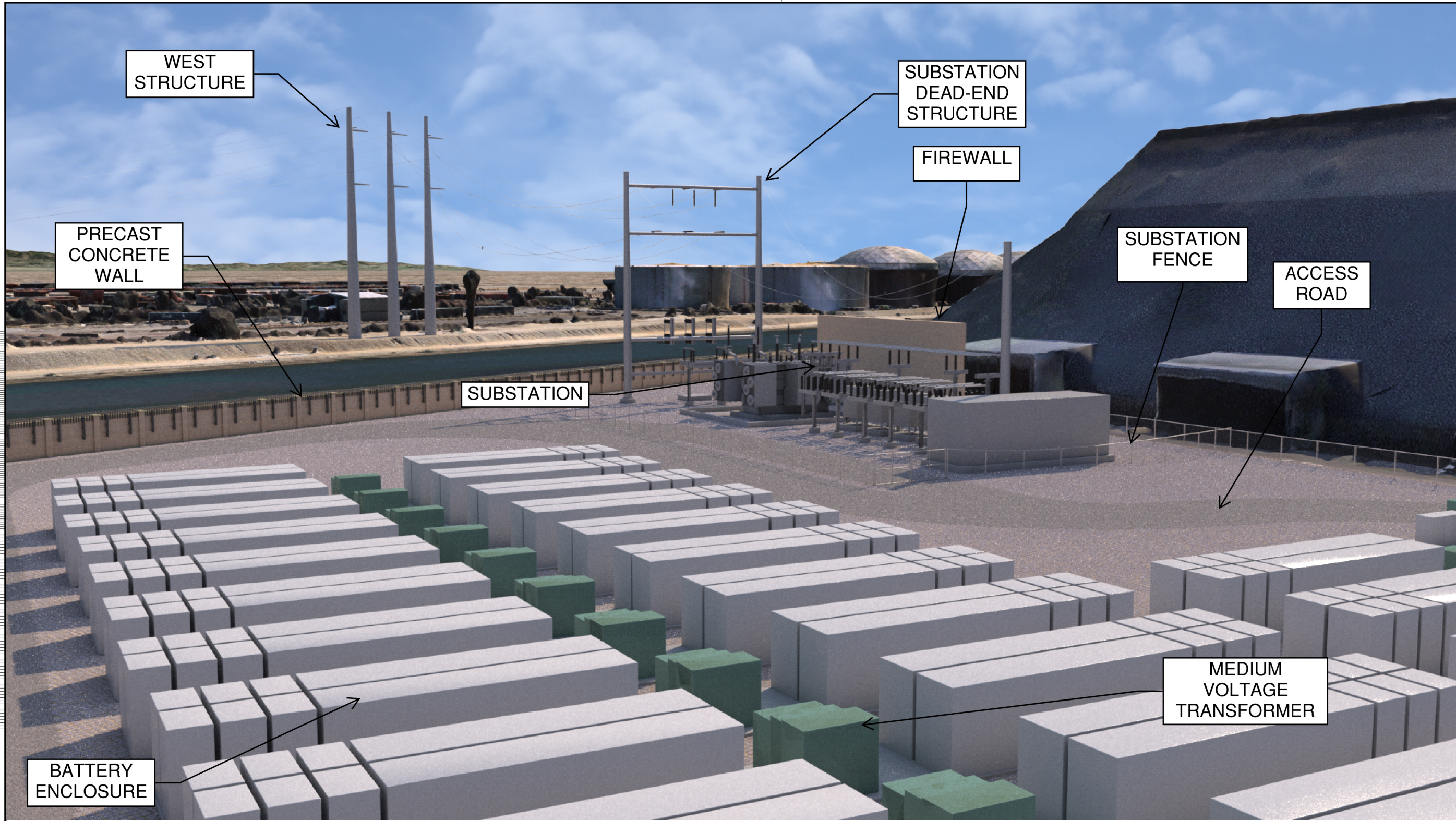
TENASKA[®]

LOS ANGELES COUNTY, CALIFORNIA

AVOCET ENERGY STORAGE, LLC 3D RENDERING AND PHOTOSIMULATIONS	
project	contract
drawing	rev. C
sheet 1 of 1	sheets
file 3D Renderings AerialSite	

Scale For Microfining
Millimeters
Inches

A
B
C
D
E
F
G
H



POST-DEVELOPMENT
 AERIAL RENDERING LOOKING
 EAST FROM ABOVE BESS FACILITY

**PRELIMINARY - NOT
 FOR CONSTRUCTION**

A	4/4/24	EDV	ACR	ISSUED FOR CONDITIONAL USE PERMIT					
no.	date	by	ckd	description	no.	date	by	ckd	description

**BURNS
 McDONNELL**

9400 WARD PARKWAY
 KANSAS CITY, MO 64114
 816-333-9400
 Burns & McDonnell Engineering Co., Inc.

designed
 E. VILA

detailed
 E. VILA

AREVON

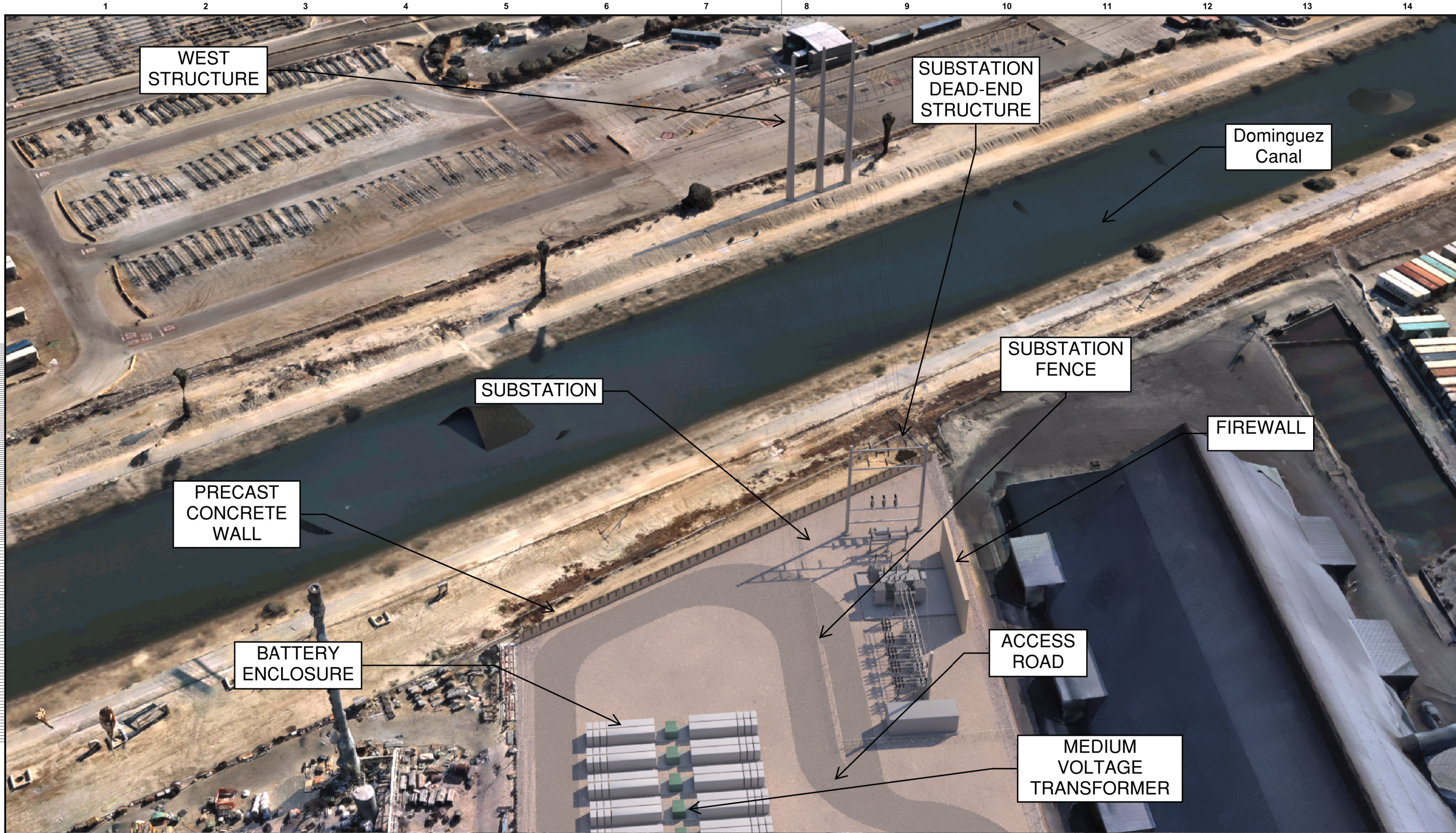
LOS ANGELES COUNTY, CALIFORNIA

AVOCET ENERGY STORAGE, LLC
 3D RENDERING AND
 PHOTOSIMULATIONS

project _____ contract _____

drawing _____ rev. **A**

sheet 1 of 1 sheets
 file 3D Renderings AerialSite



WEST
STRUCTURE

SUBSTATION
DEAD-END
STRUCTURE

Dominguez
Canal

SUBSTATION

SUBSTATION
FENCE

FIREWALL

PRECAST
CONCRETE
WALL

BATTERY
ENCLOSURE

ACCESS
ROAD

MEDIUM
VOLTAGE
TRANSFORMER

POST-DEVELOPMENT
AERIAL RENDERING LOOKING
EAST FROM ABOVE BESS FACILITY

**PRELIMINARY - NOT
FOR CONSTRUCTION**

A	4/4/24	EDV	ACR	ISSUED FOR CONDITIONAL USE PERMIT
no.	date	by	ckd	description

no.	date	by	ckd	description

**BURNS
MCDONNELL**

9400 WARD PARKWAY
KANSAS CITY, MO 64114
816-333-9400
Burns & McDonnell Engineering Co., Inc.

designed E. VILA | detailed E. VILA

AREVON

LOS ANGELES COUNTY, CALIFORNIA

AVOCET ENERGY STORAGE, LLC 3D RENDERING AND PHOTOSIMULATIONS	
project	contract
drawing	rev. A
sheet 1 of 1	sheets
file 3D Renderings AerialSite	