

RC#510 CARSON (P4M)



FRONT ENTRY ELEVATION
SCALE: 1" = 12'-0"



DRIVE THRU ELEVATION
SCALE: 1" = 12'-0"



SIDE ENTRY ELEVATION
SCALE: 1" = 12'-0"



REAR ELEVATION
SCALE: 1" = 12'-0"

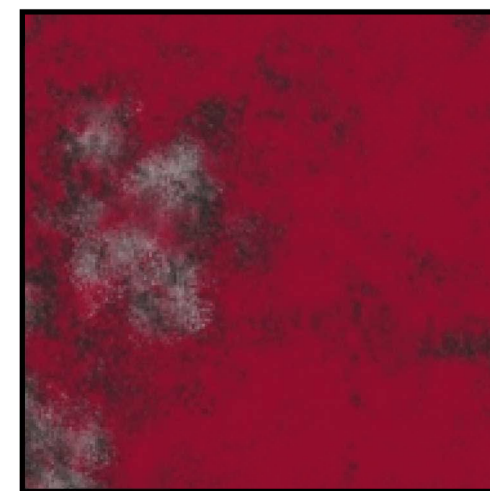
MATERIAL FINISHES

EM-3



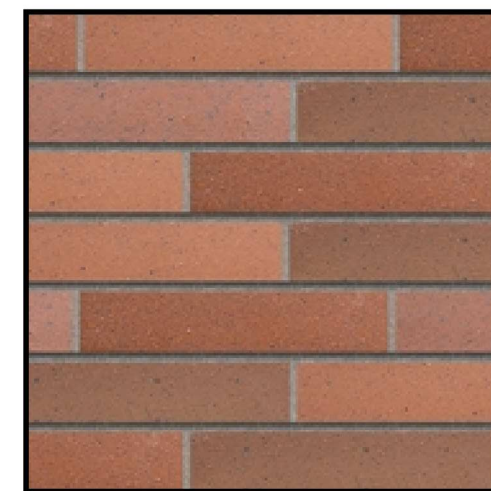
CARBON GRADE FINISH: HOT ROLLED STEEL W/ CARBON GRADE FINISH

EM-4



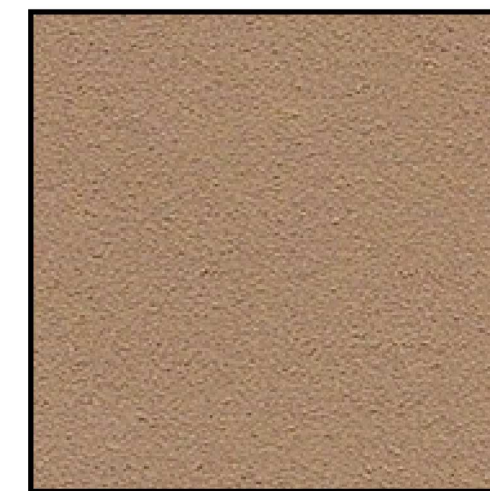
RECLAIMED METAL PANEL: VINTAGE CAR HOOD OCCURS AT FACE OF THE "I" ELEMENT ONLY

EWF-1



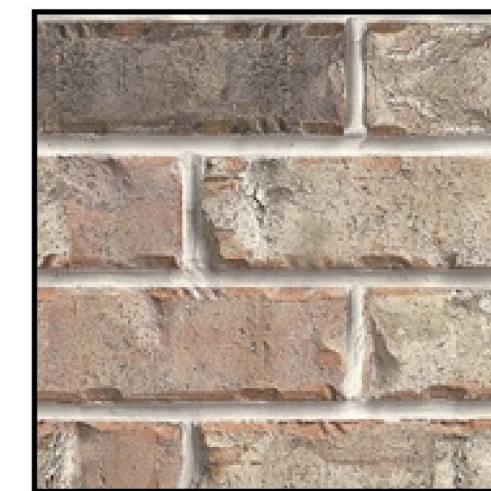
BELDEN NORMAN BRICK MASONRY MEDIUM RANGE. SMOOTH. IRON SPOT. MORTAR TO MATCH SOLOMON PRODUCTS IO H. WEATHERED HORIZONTAL STRIKE. VERTICAL JOINTS ARE FLUSH

EWF-2



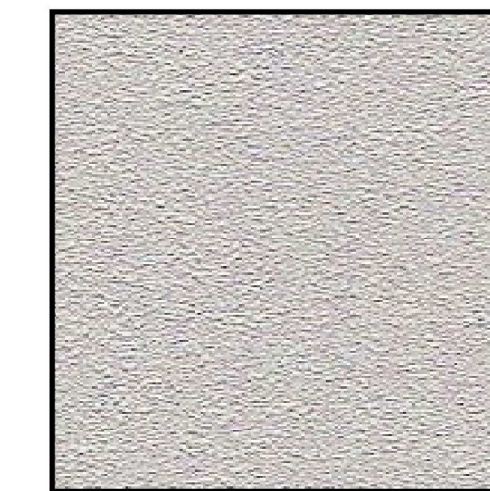
"382 TAMALE" PORTLAND CEMENT STUCCO.

EWF-4



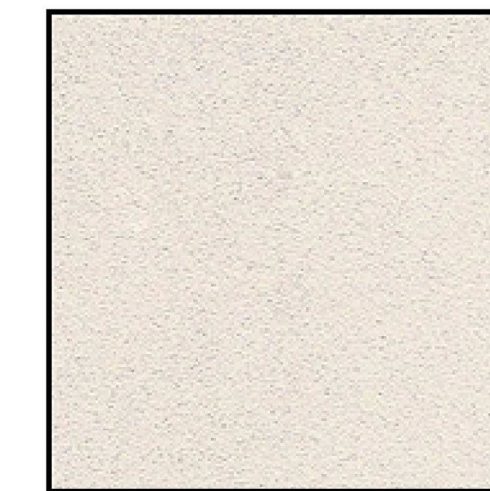
BORAL: "ALAMO" MODULAR BRICK. MORTAR TO MATCH SOLOMON PRODUCTS IO H. LIGHT BUFF SACK RUB FINISH.

EWF-5



"132 MOUNTAIN FOG" PORTLAND CEMENT STUCCO

EWF-6



456 OYSTER SHELL. CEMENT STUCCO.

EWS-2



ALUMINUM STOREFRONT SYSTEM FINISH: ANODIZED BLACK